

# CARIBBEAN DEPLOYMENT

# MCB SEVEN



# 1963 - 1964

**Asmara, Ethiopia**

**Roosevelt Roads, Puerto Rico**

**Vieques, Puerto Rico**

**St. Thomas, Virgin Islands**



DEDICATED TO THE MEMORY  
OF  
JOHN FITZGERALD KENNEDY  
24 MAY 1917 — 22 NOVEMBER 1963  
THIRTY-FIFTH PRESIDENT OF THE  
UNITED STATES OF AMERICA

AND WHEN HE FELL IN WHIRLWIND, HE WENT DOWN  
AS WHEN A LORDLY CEDAR, GREEN WITH BOUGHS,  
GOES DOWN WITH A GREAT SHOUT UPON THE HILLS,  
AND LEAVES A LONESOME PLACE AGAINST THE SKY.

— EDWIN MARKHAM  
ON THE ASSASSINATION OF ABRAHAM LINCOLN



### MCB SEVEN'S EMBLEM

IN SELECTING AN EMBLEM, MCB SEVEN DEMONSTRATED WHAT IT CONSIDERS ITS MOST IMPORTANT ASSET -- THE MAN.

IN THE WORLD OF MODERN CONSTRUCTION, THE IMPORTANCE OF MACHINERY AND EQUIPMENT CANNOT BE IGNORED. IMPORTANT AS THEY ARE, HOWEVER, THEY STILL EXIST ONLY TO LESSEN MAN'S LABOR.

IT IS THE MEN OF AN ORGANIZATION -- THE MEN WHO USE THIS MACHINERY, THE MEN WHO OPERATE THIS EQUIPMENT, THE MEN WHO SIT BEHIND THE DRAFTING TABLES -- WHO MAKE THEIR ORGANIZATION STAND ABOVE ALL OTHERS. IT IS THESE MEN WHO GIVE LIFE AND PURPOSE TO ANY ORGANIZATION.

MCB SEVEN USED THIS THEME IN DESIGNING ITS EMBLEM. IN IT THEY PORTRAY MAN AS THE MAINSTAY OF THE BATTALION. THE MAN STANDS OUT FROM ALL ELSE.

THE QUALITIES AND CAPABILITIES OF THE MAN INVOLVED IN AN OPERATION CANNOT BE OVERLOOKED. THE ABILITY OF THE MAN TO DO A JOB, IN PEACE OR IN WAR, DETERMINES THE SUCCESS OR FAILURE OF THE MISSION. THE CONSTRUCTION OF HOUSING, ROADS, OR AIR STRIPS ARE JOBS FOR MEN. THE SUPPORT OF FRONT LINE DEFENSES ARE JOBS FOR MEN.

WHATEVER TASK ASSIGNED, THE MEN OF SEVEN DID IT -- AND DID IT WELL. YES, MCB SEVEN IS PROUD OF HER MEN -- AND JUSTIFIABLY SO.

# HISTORY OF U. S. NAVAL MOBILE CONSTRUCTION BATTALION SEVEN

U. S. NAVAL MOBILE CONSTRUCTION BATTALION SEVEN WAS COMMISSIONED ON AUGUST 22, 1951, WITH ITS FIRST COMMANDING OFFICER BEING R. F. SMART, LCDR, CEC, USNR, WHO HELD THE COMMAND UNTIL BEING RELIEVED IN JUNE 1953.

IN ITS PRIMARY ROLE OF CONSTRUCTION, MCB SEVEN HAS BEGUN OR FINISHED SUCH PROJECTS AS AIR STRIPS, HOUSING FACILITIES, GYMNASIUMS, ENLISTED MEN'S CLUBS, OFFICE BUILDINGS, AND SOIL STABILIZATION CONTROL PROJECTS. FROM OCTOBER 1957 UNTIL AUGUST 1959, MCB SEVEN SET A RECORD BY REMAINING DEPLOYED TO THREE ISOLATED ISLANDS IN THE WEST INDIES, COMPLETING SINGLE-HANDEDLY THE LARGEST CONSTRUCTION PROJECT UNDERTAKEN BY A PEACETIME ATLANTIC FLEET CONSTRUCTION BATTALION. ALWAYS BEFORE, A PROJECT OF SUCH MAGNITUDE HAD BEEN HANDLED BY TWO OR MORE BATTALIONS, ONE RELIEVING THE OTHER UNTIL THE JOB WAS COMPLETED.

STANDING NOW IN THOSE REMOTE ISLANDS ARE TWO COAST GUARD LORAN STATIONS, CONSISTING OF 42 BUILDINGS -- AS A MUTE TESTIMONY OF THE "CAN DO" AND "HAVE DONE" SPIRIT OF MCB SEVEN.

AFTER RETURNING TO HER HOME PORT IN DAVISVILLE, RHODE ISLAND, IN SEPTEMBER 1959, SEVEN WAS DEPLOYED TO ROOSEVELT ROADS, PUERTO RICO.

RETURNING FROM PUERTO RICO AFTER A SUCCESSFUL DEPLOYMENT, SEVEN WAS DEPLOYED TO GUANTANAMO BAY, CUBA, LEAVING A SMALL DETACHMENT AT ROOSEVELT ROADS TO SET UP AN ASPHALT PLANT AND REPAIR ROADS.

ON OCTOBER 11, 1961, THE BATTALION RETURNED FROM CUBA TO DAVISVILLE TO BEGIN PLANNING FOR ITS NEXT DEPLOYMENT TO ROTA, SPAIN. DURING THAT HOME-PORT PERIOD CBLANT ANNOUNCED THAT SEVEN HAD BEEN NAMED "BEST OF TYPE" OF THE ATLANTIC CONSTRUCTION BATTALIONS, AND SUBSEQUENTLY WAS AWARDED THE PELTIER AWARD TO BE RECOGNIZED AS THE BEST BATTALION IN THE U. S. NAVY FOR 1961.

IN ROTA, SPAIN, THE BATTALION WAS ASSIGNED 15 DEFERENT PROJECTS, COVERING A WIDE VARIETY OF BUILDING TYPES AND MATERIALS. THEY SERVE AS A GOOD EXAMPLE OF THE CAPABILITIES OF A MOBILE CONSTRUCTION BATTALION.

IN JULY 1962, MCB SEVEN AND MCB ONE PARTICIPATED IN THE FIRST AIRLIFT DEPLOYMENT AND REDEPLOYMENT IN THE ATLANTIC SEABEES. ON JULY 17, 180 MEN OF MCB ONE LANDED AT ROTA, SPAIN, AND ON JULY 18, 220 MEN OF MCB SEVEN DEPARTED ON THREE JET TRANSPORT PLANES FOR RETURN TO DAVISVILLE VIA DIRECT AIRLIFT.

ALTHOUGH NOT SCHEDULED FOR DEPLOYMENT UNTIL DECEMBER, THE CUBAN CRISIS NECESSITATED AN EMERGENCY DEPLOYMENT TO THE U. S. NAVAL BASE, GUANTANAMO BAY, CUBA, IN LATE OCTOBER, WHERE IT JOINED MCB FOUR IN THE CONSTRUCTION EFFORT OF PROJECT "MIGHT."

WHEN MCB FOUR LEFT IN EARLY DECEMBER, MCB SEVEN CARRIED ON AND COMPLETED GUANTANAMO'S HARDENED DEFENSIVE POSITIONS BY APRIL 30, 1963. ESSENTIAL CONSTRUCTION PROJECTS WHICH HAD BEEN DELAYED BY THE NECESSITY OF PROJECT "MIGHT" KEPT THE BATTALION BUSY UNTIL MID-JULY 1963 WHEN IT RETURNED TO DAVISVILLE.

DURING THIS DEPLOYMENT, THE BATTALION AGAIN DEMONSTRATED ITS "CAN DO" SPIRIT AND WAS ANNOUNCED AS "BEST OF TYPE" AND AWARDED THE BATTLE EFFICIENCY "E" FOR THE BEST PERFORMANCE OF A CONSTRUCTION BATTALION IN THE ATLANTIC FLEET, SUBSEQUENTLY SEVEN WAS AWARDED THE COVETED PELTIER AWARD NAMING HER THE BEST CONSTRUCTION UNIT IN THE NAVY FOR 1963.

AFTER A MOST WELCOMED HOME PORT PERIOD SEVEN DEPLOYED TO ROOSEVELT ROADS, P. R., VIEQUES ISLAND, AND ST. THOMAS, V. I., IN THE FALL OF 1963. IT IS THE HISTORY OF THIS DEPLOYMENT TO THESE THREE DEPLOYMENT SITES THAT IS PORTRAYED WITHIN THE COVERS OF THIS BOOK.

## CRUISEBOOK STAFF

SUPERVISOR - - - - -LT J. D. YEICH, CHC, USNR

EDITOR - - - - -M. S. WELCH, JO3, USN

LAYOUT - - - - -D. A. BROWN, CN, USNR

PHOTOGRAPHERS - -J. H. BYRD, PH2, USN  
D. A. BROWN, CN, USNR

ILLUSTRATIONS - -J. W. LIBHART, EADCN, USNR

COMMENTARY - - -D. G. VAN WAY, SN, USN  
M. S. WELCH, JO3, USN

CAPTIONS - - - - -T. G. GEISEN, PN3, USNR  
M. S. WELCH, JO3, USN



## COMMANDING OFFICER'S MESSAGE

THE PAST FEW MONTHS HAVE SEEN THE MEN OF MOBILE CONSTRUCTION BATTALION SEVEN DEPLOYED TO THE FAR CORNERS OF THE EARTH ADDING STATURE AND LUSTER TO THE HIGH TRADITION OF THE SEABEES. IN THE FOLLOWING PAGES, THE RECORD AND HIGHLIGHTS OF THE ROOSEVELT ROADS/VIEQUES/ST. THOMAS DEPLOYMENT ARE PRESENTED AS A REMINDER OF THE SUCCESSFUL COMPLETION OF A WORKLOAD MADE VITALLY IMPORTANT BY THE IMMEDIATE OPERATIONAL REQUIREMENTS OF THE ATLANTIC FLEET,

EVERY MAN IN SEVEN HAS A RIGHT TO BE PROUD OF THE ACCOMPLISHMENTS OF THIS DEPLOYMENT AS WE REFLECT UPON THE QUALITY WORKMANSHIP INCORPORATED IN THE NEW CONSTRUCTION AND EXTENSIVE REPAIRS COMPLETED AT THESE THREE SITES. THIS CRUISEBOOK WILL HELP YOU REMEMBER THE LONG HARD HOURS AS PROJECT PLANNING PERSONNEL, CONSTRUCTION CREWS AND SUPPORT PERSONNEL WORKED TOGETHER TO COMPLETE ALL PROJECTS A MONTH EARLIER THAN ORIGINAL REQUIREMENTS HAD MADE NECESSARY. YOU WILL RECALL THE PRIVATIONS OF TENT CAMP LIVING AT VIEQUES, BUT YOU WILL ALSO REMEMBER THE DEVELOPMENT OF CLOSE FRIENDSHIPS AND THE SATISFACTION OF HAVING ACCOMPLISHED WHAT OFTEN TIMES SEEMED TO BE THE IMPOSSIBLE,

THE OUTSTANDING RECORDS OF SEVEN'S DETACHMENT QUEBEC IN ASMARA, ETHIOPIA, AND OUR STAT 7-2 IN HOLY LOCH, SCOTLAND, ARE ALSO INCORPORATED INTO THIS CRUISEBOOK.

IN THIS YEAR MANY HONORS AND HIGHEST RECOGNITION HAVE BEEN ACCORDED THE BATTALION, ALL OF WHICH ATTESTS TO THE SUCCESS WITH WHICH SEVEN HAS SERVED. WITH ANY ORGANIZATION, AS WITH INDIVIDUALS, "SPIRIT" IS AN IMPORTANT ELEMENT IN ULTIMATE SUCCESS. IT HAS BEEN THROUGH YOUR CHARACTERISTIC FINE SPIRIT OF READINESS TO SERVE, YOUR DEVOTION TO DUTY, AND YOUR LOYALTY TO THE BATTALION THAT SEVEN HAS ADDED, DURING THIS DEPLOYMENT, TO ITS LOFTY REPUTATION.

THIS DEPLOYMENT HAS AGAIN CONFIRMED THAT MCB SEVEN IS THE FINEST CONSTRUCTION AND FIGHTING UNIT ASSEMBLED UNDER ONE COMMAND. IT HAS BEEN MY PLEASURE AND PRIVILEGE TO HAVE SERVED AS YOUR COMMANDING OFFICER.

C. C. HEID, JR.  
COMMANDING OFFICER

## EXECUTIVE OFFICER'S MESSAGE

THE PUERTO RICO DEPLOYMENT WAS AN ENJOYABLE AND INTERESTING CLOSE TO MY TWO YEARS WITH MCB SEVEN. THE THREE WORK SITES AT ROOSEVELT ROADS, VIEQUES, AND ST. THOMAS PROVIDED CHALLENGING AND WORTHWHILE PROJECTS WHICH GAVE US A SENSE OF POSITIVE ACCOMPLISHMENTS. THE CLIMATE, BEAUTIFUL SCENERY, AND GOOD LIBERTY IN SAN JUAN AND ST. THOMAS MADE THE AREA AS ENJOYABLE AS POSSIBLE DURING THE MONTHS OF SEPARATION FROM OUR LOVED ONES. THIS BOOK WILL HELP US TO REMEMBER IN FUTURE YEARS THE HARD WORK AND GOOD TIMES THAT WE EXPERIENCED.

AFTER THE TREMENDOUS LOSS OF EXPERIENCED PERSONNEL DURING THE SUMMER AND FALL OF 1963, SEVEN BOUNCED BACK AND CONTINUED THE OUTSTANDING PERFORMANCE FOR WHICH IT IS NOTED. I HAVE ACHIEVED GREAT SATISFACTION FROM OBSERVING THE YOUNG MEN WHO CAME TO US IN ROTA, DAVISVILLE AND GUANTANAMO ACCEPT THEIR RESPONSIBILITIES AND THE CHALLENGE AND BECOME RELIABLE, HARDWORKING AND KNOWLEDGEABLE CONSTRUCTION MEN.

YOU HAVE LEARNED YOUR JOBS WELL AND PERFORMED MAGNIFICENTLY. I WILL ALWAYS BE PROUD, AS I HOPE YOU WILL BE, TO HAVE BEEN ASSOCIATED WITH THE SEABEES AND ALL MY SHIPMATES IN MCB SEVEN.

WELL DONE AND GOOD LUCK IN YOUR FUTURE LIFE.

*E. C. Hughes*

E. C. HUGHES  
EXECUTIVE OFFICER







JOHN G. BAUER  
LT. CEC, USN  
OPERATIONS OFFICER



JOHN D. YEICH  
LT. CHC, USNR  
CHAPLAIN



MAURICE C. CION  
LT. MC, USNR  
MEDICAL OFFICER

# Officers



DAVID G. GIFFORD  
LT. DC, USNR  
DENTAL OFFICER



MICHAEL M. DALLAM  
LT. CEC, USN  
TRAINING OFFICER



WILLIAM B. HICKMAN  
LT. SC, USN  
SUPPLY OFFICER



PAUL B. ENGELBERT  
LTJG, CEC, USNR  
ENGINEERING OFFICER



GUY J. MARELLA  
LTJG, CEC, USNR  
B COMPANY COMMANDER



LOUIS A. FERMO, JR.  
LTJG, CEC, USNR  
A COMPANY COMMANDER



DORWIN C. BLACK  
LTJG, CEC, USNR  
D COMPANY COMMANDER



GEORGE J. OXLEY  
LTJG, CEC, USNR  
E COMPANY COMMANDER  
C COMPANY COMMANDER



MICHAEL E. CORNUE  
LTJG, CEC, USNR  
ASS'T D COMPANY COMMANDER  
MILITARY TRAINING OFFICER



CHARLES C. GAMBLE  
ENS, CEC, USNR  
MILITARY TNG OFF  
STAT OFFICER



LESLIE D. HEACOCK  
ENS, CEC, USNR  
H COMPANY COMMANDER



MARTIN M. GLESK  
ENS, CEC, USNR  
ASS'T MIL TNG OFF



FRANK R. NORA  
ENS, CEC, USNR  
ASS'T A COMPANY OFF



BEAL H.L.  
UTC MO.  
UT PROJ CH



COWLEY T. W.  
YNC TEXAS  
H CO CHIEF



DORFELD C. W.  
BUCS MICH.  
C CO CHIEF



EVANS B. R.  
BUC GA.  
BU PROJ CH



YERASHUNAS J.F.  
SWCS PA.  
DET "Q"/E  
COMPANY CHIEF

# Chiefs



CLEMENTS F.T.  
EOC FLA.  
E CO/EO PROJ  
CHIEF



GREEN C.T.  
EOCS LA.  
A CO CHIEF



HAMPTON W.L.  
SWC GA.  
B CO CHIEF



KASPER R.J.  
PNCA N.Y.  
PERSONNEL CH



LAFRANCE R.R.  
CMC MASS.  
CM PROJ CH



LOUDERMILK A.K.  
BUC N. MEX.  
BU PROJ CH  
DELTA CO



MURPHY P.L.  
HMC R.I.  
MED DEPT CH



OLIVE W.H.  
CSC TENN.  
COMSY CH  
DELTA CO



ORTNER A.E.  
BUCM R.I.  
OPNS CHIEF



SCHWARTZ R.K.  
BMC KY.  
CH MASTER-  
AT-ARMS



SELL L.R.  
CEC PA.  
SAFETY CH



STAPLES G.W.  
CMC ME.  
6101 CHIEF



THOMAS G.R.  
SKCA ILL.  
SUP DEPT CH



TORNOE H.F.  
BUC CALIF  
QUARRY/CRUSHER  
CH--D CO



VARNER E.B.  
CEC ALA.  
CE PROJ CH

# H Company



ADMIRE L.B.  
EASCN  
ORE.



ARP D.H.  
CEW3  
PA.



BAILEY C.D.  
CES3  
ILL.



BAKER H.W.  
SK3  
ILL.



BANNING C.E.  
SN  
ILL.



BARCHESKI  
T.J., PCSN  
MICH.



BAUMANN  
W.R., CET3  
WASH D.C.



BAXTER L.R.  
CN  
GA.



BIRCH J.R.  
SK2  
N.Y.



BRODEUR  
H.T., YN3  
MASS.



BUTCHER  
L.E., CN  
MD.



BROWN D.A.  
AN  
MASS.



BYRD J.H.  
PH2  
TENN.



CHADWICK R.  
SK2  
N.Y.



CLAYTON E.  
SD2  
MISS.



COE G.E., JR.  
SN  
OHIO



COLBERT B.G.  
YNSN  
PA.



CONWAY  
E., YN2  
N.Y.



DACK G.L.  
CN  
NEB.



DAVID A.O.  
BUL3  
P.I.



DOANE J.J.  
EAS2  
MD.



DONOVAN  
C., GMG2  
FLA.



DRENNEN T.  
BUR2  
N.Y.



FAMBROUGH  
H.L., PN1  
PA.



FELLOWS  
V.D., BUH2  
CONN.



FERRER  
R.M., TN  
P.I.



FINK P.M.  
SN  
MINN.



GEISEN T.G.  
PN3  
OHIO



GRUBIC J.  
BUR2  
PA.



GUARINO  
L.J., CN  
LA.



HAUGHEY  
J.P., EASCN  
CALIF.



HEDGES D.E.  
EASCN  
VT.



HEUPEL L.  
SWF3  
N.D.



HILL H.W.  
CP  
MD.



HORNSBY  
A.E., CN  
GA.



HOWELL  
D.A., SK3  
MONT.



INGEL C.D.  
CP  
ARK.



JACKSON  
C.P., SN  
OHIO



JASKOLKA  
C.E., BUL3  
PA.



JOHNSON  
J.F., SK3  
FLA.



JOHNSTON  
H.L., SD3  
MD.



KANE R.F.  
CN  
MASS.



LENTSCH L.J.  
JR., EAD2  
MINN.



LIBHART  
J.W., EADCN  
PA.



LITTLE  
J.H., EAD3  
MD.



MARINELLI  
C.A., PC2  
CONN.



MARTIN, B.D.  
HMI  
S.C.



MARTINAK  
F.J., GMGI  
CALIF.



MAZERES  
G.H., PN2  
LA.



MAZUR S.F.  
BUL2  
PA.



MC BRIDE  
C.E., SK3  
N.J.



MILLAR  
W.F., HM3  
PA.



MORROW  
E.S., BU1  
PA.



MROZ D.A.  
CN  
PA.



MULLIN  
M.J., CN  
CONN.



NESBITT  
J.A., BUL3  
PA.



O'BRIEN  
M.J., BUR3  
MO.



PATELUNAS  
R.W., DK3  
N.Y.



PATTERSON  
R.C., SN  
N.Y.



PENNY P.  
SW1  
OHIO



PHILLIPS  
A.E., CN  
S.C.



PICKERING  
R.W., PNSN  
MASS.



PRIOR D.J.  
EASCN  
R.I.



RAHR C.W.  
PC2  
W. VA.



ROBERTS  
S.M., EAD3  
MASS.



ROMANOWSKI  
J., CN  
FLA.



RUPERT  
W.H., BULCP  
ILL.



RUSSELL  
B.J., SWE3  
OKLA.



SCHMELTZER  
M.A., BUH2  
MINN.



SCHMIDT  
J.W., EAS3  
CONN.



SCHWEGLER  
J.G., SK1  
MINN.



SILLIA  
P.G., SN  
OHIO



BLAIR B.F.  
YN3  
MO.



BROSS K.L.  
EAD3  
ILL.



ELLORAS  
J.P., CP  
N.Y.



GAILLARDETZ  
N.R., CN  
N.H.



JOHNSON  
D.W., YNSN  
WIS.



PARSONS  
J.R., CN  
MICH.



SPENCER  
L.F., CN  
ILL.



NASON H.A.  
BUL1  
FLA.



ROGERS L.E.  
SW1  
R.I.



THEXTON  
W.S., BUL3  
MICH.



TOLEDO  
R.A., DK1  
PHILIPPINES



TUCKER  
R.T., PNSN  
S.C.



WELCH M.S.  
JO3  
N.H.



WILLIAMS  
J.E., BU1  
S.C.



VAN WAY  
D.G., SN  
N.Y.



SMOOT  
G.D.  
BUH2

### PERSONNEL NOT SHOWN

MALOY T.O. PH1

PETERSON C.C. PH3

ROBINSON W.C. TA



# A Company



AYDLETT  
S.P., CN  
N.C.



AUSTIN  
A.A., CN  
IND.



BAISLEY  
D.L., CP  
CONN.



BASKINS  
R.M., EO1  
ARK.



BITTLER  
W.L., CN  
ILL.



BOIES  
M.W., CP  
MICH.



BOOTH C.S.  
CMACN  
ILL.



BROOKS W.L.  
CMHCN  
ME.



BRUNING  
P.K., EOHCP  
MO.



BUCHER  
A.F., CMA3  
N.Y.



BUNTING  
G.L., CN  
MD.



BURNETTE  
C.T., EON2  
LA.



CALVERT  
F.T., EO1  
FLA.



CAPE R.F.  
EONCN  
TENN.



CLARK M.L.  
CMACN  
IND.



CLOUSE  
R.D., CMA3  
WIS.



COLE R.L.  
CMA3  
OHIO



COLLINS  
W.L., EO1  
BERMUDA



COTTEN  
E.L., CMA3  
MO.



DEATRICK  
J.A., CN  
IND.



DETMER  
R.L., CN  
ME.



DINIUS  
E.R., CN  
IDAHO



DURFEE  
D.C., CN  
R.I.



EBERSOLD  
M.S., CMACN  
WIS.



ECKEL R.B.  
EONCN  
N.Y.



ENOS T.W.  
EON2  
CALIF.



EVANS J.A.  
CMA3  
IND.



FACTOR  
C.P., CN  
MICH.



FORTUNE  
J.E., CN  
VT.



GREEN  
E.C., EOH2  
KY.



GUSHWA  
T.M., CN  
IND.



HAYDEN  
C.D., CP  
CONN.





HINKLE H.M.  
EONCN  
WASH.



HOLDER F.E.  
CMCP  
MISS.



HOPPER J.W.  
EONCN  
ALA.



HORNEY  
T.L., EON3  
MICH.



HOUSTON  
G.G., CN  
PA.



HOUSTON  
L.L., CN  
PA.



JACKSON  
L.E., CN  
MASS.



KETCHUM  
A.R., CN  
MICH.



KJARLAND  
D.L., EONCN  
MINN.



KNOBBS  
J.R., CMH3  
WASH.



LANDON  
G.E., EOH3  
ILL.



LAPINID  
N.U., CMA2  
PHILIPPINES



LINDSAY  
T.K., CP  
ILL.



LUSSIER  
C.E., CN  
CONN.



LYNN R.D.  
CP  
MICH.



LYONS D.N.  
CP  
R.I.



MAZZORANA  
R., EOH3  
CONN.



MC INTIRE  
P.W., EOH3  
MASS.



MENARD  
K.R., CP  
P.R.



MONOSCALCO  
E.F., CN  
ILL.



MOORE  
R.W., CMH3  
MASS.



MORSE  
R.H., CN  
PA.



MULLER  
D.E., CN  
N.Y.



NAVY J.R.  
EONCN  
ALA.



NEED O.E.  
EONCN  
FLA.



NIECE  
F.M., EO1  
W. VA.



O'ROURKE  
E.J.  
CMACN



ORTIZ A.J.  
CMH3  
P.R.



PARKER  
J.C., CM1  
MO.



PEREIRA  
I.JR., CMHCN  
N.Y.



PHILLPOTT  
N.E., CN  
N.J.



POLEY  
J.F., CN  
MASS.



POTOCNAK  
J.E., CN  
N.Y.



REED K.M.  
CMH3  
ME.



RAYMAN  
R.J., EONCN  
MICH.



RICHARDSON  
R.H., EOH3  
OKLA.



REEVES  
B.J.  
EON3



ROGALSKI  
J.J., CEP3  
CALIF.



RUHNKE  
L.R., CN  
KAN.



RYAN J.E.  
CP  
VT.



ADKINSON  
D.B., CP  
IDAHO



CARTER  
J.W., CN  
N.H.



CREWS  
J.D., EOH CN  
ORE.



SADDLER  
H.J., CN  
TEXAS



SAUNDERS  
A.W., CN  
VA.



SCHEDLER  
C.E., CN  
CALIF.



SCOTT  
W.B., CN  
KY.



SHULMAN  
J., CN  
MASS.



SKELTON  
R.E., CN  
ALA.



SODEN  
M., CN  
N.J.



SWARTZMAN  
R.L., CMHCN  
KAN.



SWORD  
K.F., CN  
MINN.



TAYLOR  
H.D., CN  
ALA.



TERRILL  
D.E., CN  
PA.



TORRE  
R.P., CN  
N.Y.



THORNTON  
A.N., CMA3  
OKLA.



THRONEBERRY  
J.B., EO1  
OKLA.



TILMAN  
E.F., CMHCN  
MO.



UTTER  
W.R., CN  
N.Y.



VAN EPPS  
D.A., CN  
N.Y.



VENTURA  
C.G., CN  
N.C.



VILLAFRANCA  
E.A., CMH3  
N.Y.



WADINGER  
W.P., CN  
CONN.



WALLACE  
G.D., CN  
N.Y.



WAPPLEHORST  
J.A., CMH3  
MO.



WARD  
G.F., CN  
CONN.



WARNE R.D.,  
EOHCN  
MICH.



WARREN  
B.L., CN  
IOWA



WITHEY  
R.A.,  
CMA2



WHITNEY  
R.A., CN  
PA.



WICKHAM  
R.C., EONCN  
IOWA



WILKERSON  
K.L., CN  
MO.

### PERSONNEL NOT SHOWN

MCQUEEN C.R., EOH3

OSBORNE G.M., CMH3

STEWART T.E., CN

WROBLEWSKI A.A., CP

MEYER J., CMA3

PARKS W.A., CN

THIEL J.J., CMACP

MITTELSTADT J.C., EON3

WOOD L.H., EON2

VIDOS R.J., CMHCN

# B Company



ADAMS  
B.H., CN  
KY.



ALDERMAN  
T.C., SWFCN  
ORE.



ATKISSON  
R.J., UTWCN  
WASH.



BALL  
J.A., CEW3  
ALA.



BELOTE  
L.D., CEW2  
MICH.



BLAKE  
J.E., UTP3  
VA.



BOYER  
K.R., CN  
LA.



BRUNER  
L.E., CN  
ALA.



BROWN  
T.D., CN  
KAN.



BURNETTE  
B.E., BUL2  
ALA.



BUSS  
K.H., UTB3  
IND.



CAINE  
J.P., CETCN  
N.J.



CANTRALL  
T.C., ETNSN  
CALIF.



CILLESSEN  
G.H., CESC  
N.M.



CLAIBORNE  
E.L., UTWCN  
IDAHO



COUTURE  
J.B., SWECC  
WASH.



COMPTON  
C.N., CN  
VA.



DROGO  
C.J., CN  
N.Y.



DURHAM  
W.H., SWE3  
IND.



EDENS B.J.  
BUR3  
TEXAS



EUTSLER  
C.R., CEPCP  
MO.



FURTADO  
A.E., CN  
N.H.



GILTRAP  
P.G., BUL3  
MASS.



GRAHAM  
R.J., CET2  
OHIO



GREEN  
G.R., UTA3  
N.Y.



GRIFFIN  
W.F., CN  
MASS.



HAMMACK  
R.O., SWFCN  
TEXAS



HARVEL  
J.W., SW1  
OKLA.



HAZEWSKI  
T.E., CEW2  
DEL.



HIGGINS  
R.A., CN  
MASS.



HILL K.R.  
UT1  
UTAH



HOFACKER  
L.G., UTP3  
OHIO



HOUSTON  
J.D., CN  
TEXAS



HUTKA  
V.J., CEP3  
PA.



ISAKSON  
L.I., SWT3  
N.C.



JACKSON  
R.D., UTWCN  
KAN.



WYCKOFF  
W.T., CEP3  
WASH.



JOHNSON  
R.D., SWF3  
MO.



JONES R.K.  
CN  
ARK.



LANE B.E.  
SWE2  
TEXAS



LANE T.V.  
CESCN  
N.Y.



LANGLOIS  
D.J., CP  
MASS.



LAZORE  
C.R., CESCN  
ME.



LECCIA  
S.D., CEWCP  
PA.



LENTSCH  
H.L., BUL3  
MINN.



MARSH  
K.W., CESCN  
MASS.



MAXWELL  
D.J., UTWCN  
N.Y.



MOODY  
F.B., SWE2  
ALA.



OLDHAM  
J.L., CESCN  
OHIO



REED  
W.H., CN  
PA.



RIEGEL  
G.J., CN  
PA.



ROBINSON  
R.T., CN  
CONN.



SCHERER  
D.W., CEW3  
MO.



SCHERER  
W.G., CN  
MASS.



SCHOFF  
J.W., CN  
MD.



SCHNOPL  
T.J., BUL3  
MICH.



SHANNON  
C.W., CN  
VA.



SNODGRASS  
J.L., CETCN  
COLO.



STEWART  
D.L., CES2  
MICH.



TONER  
F.A., CN  
R.I.



VAILLANCOURT  
M.R., SWE3  
MAINE



VAN DEVENTER  
D.L., CEP3  
MINN.



VOLESKI  
W., CEW3  
OHIO



WICHROWSKI  
G.T., CN  
N.Y.



WOOD B.L.  
SWE2  
N.M.

### PERSONNEL NOT SHOWN

WAUGH F.T. UTA3

# Company



ANDERSON  
M.B., BUI  
ME.



ATKINSON  
J.C., CN  
TEXAS



BAGGARLY  
J.H., CN  
IND.



BECHARD  
A.A., BULCN  
MASS.



PLACKER  
B.E., CN  
TEXAS



BODENSCHATZ  
C.A., BUI  
MD.



BOLTON  
R.E., BUL3  
MINN.



BRIAN  
W.J., CN  
ILL.



BROWN G.H.  
BULCN  
COLO.



BURKETT  
P.N., BULCN  
FLA.



CARR L.W.  
BULCN  
N.Y.



COLLINS  
B.R., BULCN  
ARK.



CRAWFORD  
K.R., BUHCN  
CALIF.



DAWKINS  
C.W., BUR3  
S.C.



FRASCINO  
T.J., CN  
N.Y.



GARLAND  
L.E., CN  
IND.



GREENE  
R.H., CN  
OHIO



JOHNSON  
P.A., CN  
CONN.



KALINYAK  
S., BUL3  
N.Y.



KAPP  
D.D., CN  
PA.



KORPI  
W.J., BUI  
VT.



LAST  
L.E., CN  
WIS.



LEFOY  
J.H., CP  
ALA.



MAIELLO  
A., CN  
N.Y.



MARTINSON  
L.H., BULCN  
MINN.



MIRZA  
T.B., CN  
IND.



NEWMAN  
F.A., CN  
N.J.



NORTON  
C.T., BULCN  
OHIO



PIOTROWSKI  
E.J., BUL3  
CONN.



RAUN  
K.D., CN  
ILL.



ROY  
D.B., CN  
MASS.



SCHULTZ  
D.E., BULCN  
ILL.

## PERSONNEL NOT SHOWN

FOWLER J.A. BUL3

KNIGHT K.J. CP

SETFORD J.C. CN



SHINER  
F.E., BUR2  
PA.



SHINN  
C.P., EON3  
N.J.



SLATTERY  
S.R., CN  
MASS.



SMITH  
T.D., CN  
CONN.



SNYDER R.C.  
BUHCN  
ILL.



SWITZER  
T.W., BUL3  
KAN.



THERIAULT  
D., CN  
N.H.



THOMPSON  
R.T., BULCN  
CONN.



TURCOTTE  
M.A., CN  
MASS.



STANTON  
J.R., BULCN  
PA.



VAN RITE  
K.R., BUL2  
MINN.



VANIC  
J.R., BUR3  
PA.



VEIGA  
J.M., BUL3  
MASS.



WILSON  
D.R., BULCN  
PA.



WILSON  
L.R., BUHCN  
MONT.



WOODRUFF  
D., CN  
N.J.



# D Company

## Vieques



ADAMS  
C.D., CMHCP  
FLA.



ALLEN  
L.R., SA  
ILL.



ALLEN  
W.P., CN  
N.Y.



ALPHA R.D.  
BULCN  
IND.



ANDERSON  
D.L., CMA2  
FLA.



ANDERSON  
C.J., CP  
MICH.



ANDREASEN  
T.V., HM1  
IOWA



ANDRESKY  
G.R., CN  
PA.



ANKROM  
J.H., CM1  
W. VA.



APPLEMAN  
C.G., EON3  
OHIO



AUGUSTINE  
R., SN  
LA.



BALDWIN  
A.J., UT1  
OKLA.



BARKER  
G.L., CMHCN  
PA.



BARLOW  
J.Q., EOH3  
MISS.



BARSKI  
A.F., SWF3  
OHIO



BATZ  
D.L., CN  
IND.



BECKETT  
L.L.  
UTPCN



BOLLINGER  
R.D., EASCN  
MO.



BOUGH  
J.E., BUR3  
N.Y.



BOYER  
G.E., CN  
MO.



BRINIG  
G.B., BUL3  
PA.



BROPHY  
R., BULCN  
N.J.



BROWN  
G.R., CN  
N.Y.



BROWN  
R.A., CN  
VT.



BURTON  
E.L., BUHCN  
MD.



CAHOON  
J.L., CN  
VA.



CAMPBELL  
G.T., EON3  
OHIO



CARLTON  
D.D., CN  
CALIF.



CARROL  
E.C., CMH3  
FLA.



CHAMBERLAIN  
P.W., CMHCN  
S.D.



CHASE  
H.A., BUL3  
ME.



COOPER  
T.E., CN  
GA.



COX  
F.R., CS3  
DEL.



COWAN  
J.F., CN  
WIS.



CONLEY  
H.M., DT1  
ME.



CRAMER  
E.R., UTPCN  
CALIF.



CRAWFORD  
L.W., CMHCN  
GA



DEOODES  
L.J., CN  
WASH D.C.



DORN  
E.G., CN  
S.C.



DUCKWORTH  
D.K., EONCN  
CALIF.



DUNCAN  
W.C., CN  
TENN.



EDWARDS  
A.R., CN  
MASS.



EIFEL  
L.C., CN  
OHIO



ERICKSON  
R.A., BUL3  
MASS.



ERVIN  
W.E., EO1  
S.C.



EVERETT  
R.B., EONCN  
MASS.



FAHEY  
J.J., CMHCP  
MINN.



FARR  
F.E., CN  
WIS.



FAUST  
E.I., BUL3  
PA.



FAY C.D.  
BULCN  
MASS.



FERRIS  
R.R., CN  
PA.



FRYE D.W.  
EOH3  
W. VA.



FOLEY  
C.M., CN  
OHIO



GIANANTONIO  
F.E., BULCN  
N.J.



GIBBS B.A.  
BUR2  
ME.



GIBBS M.J.  
BURCN  
MINN.



GILBERT  
L.J., UTP3  
ME.



GILBERT  
J.H., CMACN  
OHIO



GOODWIN  
R.J., BULCN  
MASS.



GREEN  
G., CEW2  
PA.



GROH  
W.J., CN  
N.Y.



GUNN L.R.  
CEP2  
CALIF.



HANCOCK  
W.L., CN  
IND.



HANDERA  
J.N., SWE3  
W. VA.



HANSEN  
R.W., CN  
MINN.



HARPER  
J.R., BULCN  
W. VA.



HARRINGTON  
R.J., CN  
N.H.



HAYES  
D.H., EONCN  
MASS.



HEINS  
F.J., EON2  
IOWA



HEINZ  
O.E., CN  
MICH.



HELGESON  
R.W., CEWCN  
COLO.



HELMS  
P.L., CMHCN  
MICH.





HENKE  
H.C., CS3  
MD.



HEROUX  
E.D., CN  
N.H.



HOOVER  
R.L., UTP3  
IND.



IDDINGS  
D.E., CN  
PA.



JOHANSON  
E.W., BULCN  
MASS.



JOHNSON  
H., CN  
N.C.



KACSO  
A., EAD3  
OHIO



KADLEC  
D.J., SK2  
KY.



KECK F.W.  
UTWCN  
PA.



KESSLER  
A.E., BURCN  
MD.



KOHLHOFF  
E.A., BULCN  
MD.



LABADIE  
R.B., BUHCN  
MASS.



LAPORTE  
J.W., BUHCN  
N.Y.



LOWER  
R.J., CN  
MICH.



LOYD J.N.  
CMH3  
TENN.



MAIDEN  
G.J., BUL3  
OHIO



MAJORS  
W.G., EON3  
IND.



MARTIN  
B.E., UTP3  
MD.



MARTUCCI  
J.A., UTPCN  
CONN.



MATHESON  
D.R., CN  
MASS.



MAY N.B.  
EASCN  
KY.



MAYTON  
H.M., CN  
KY.



MC DANIEL  
M.R., CN  
MICH.



MC KELVEY  
W.F., BULCN  
N.J.



MEHIGAN  
W.J., SWE3  
N.Y.



MILLER  
F.R., CS2  
IND.



MILLER  
T.W., BULCN  
PA.



MOBLEY  
B.L., CMHCN  
ORE.



MURPHY  
J.V., BUL3  
N.Y.



NAGEL M.W.  
SWFCP  
PA.



NEUBAUER  
A.J., EOH3  
MINN.



NULL  
J.W., CN  
ILL.



PEARCE  
J.T., CN  
N.C.



PERKINS  
A.J., EON3  
N.H.



PETERSON  
G.L., BULCN  
KAN.



PITCAIRN  
A., CN  
MASS.



RAPP D.E.  
SWF3  
PA.



RAVER  
M.L., CN  
OHIO



REINHART  
B.A., CN  
IOWA



RESSEGUIE  
H.B., CMHCN  
KAN.



ROBBS L.D.  
BULCN  
COLO.



SCARBROUGH  
C.E., CN  
ALA.



SCHIEWEK  
K.D., CN  
ORE.



SELAK  
N.A., CS2  
PA.



SHARP L.E.  
UTB3  
ILL.



SHAW G.W.  
EONCN  
IDAHO



SHEARON  
R.L., SWF3  
KAN.



SMALL  
G.B., CN  
ME.



SMITH  
R.J., CMHCN  
N.Y.



SMITH  
T.D., CN  
CALIF.



SNIDER  
G.L., BUL2  
IOWA



SPIRES  
W.E., SWE2  
S.C.



STINER  
M.L., CETCN  
CALIF.



STODDARD  
D.W., CN  
VT.



STOWELL  
R.L., YNSN  
KAN.



STOUTAMIRE  
G.H., EASCN  
FLA.



STUMPF  
R.E., BULCN  
PA.



SULLIVAN  
D.F., CN  
MASS.



TANGEN  
J.F., CN  
N.Y.



TEMPLE  
W.D., UTB3  
OHIO



THOMAS  
H.W., CP  
WISC.



TIGER  
J.W., UTWCN  
OKLA.



UBER T.C.  
EOH3  
WISC.



UNDERWOOD  
P.E., CEW3  
OHIO



WALLACE  
R.L., BURCN  
N.C.



WARD  
D.D., CN  
N.Y.



WEBB  
D.L., CN  
W. VA.



WHORLEY  
R.L., CN  
W. VA.



WILDER  
T.J., UTBCN  
MICH.



WILLIAMSON  
H.D., SN  
FLA.



WIMMER  
R.S., EONCN  
VA.



YEAGER  
T.C., CN  
PA.



YWANCIOV  
A.J., SN  
CONN.



ZUGG  
J.D., CP  
IOWA



ZUGG  
G.K., CN  
IOWA



GEORGE (DOG)  
CMHK9  
VIEQUES

#### PERSONNEL NOT SHOWN

ANDERSON R.B. EONCP  
BLANK R.P. CMH3  
CLARK J.L. CN  
KERNER R.B. SWF2  
LUNSFORD H.L. BUL3  
O'CONNOR K.C. CN  
PERRY D.R. BURCN

RISCH A.W. UT1  
RUTLEDGE C.D. BUL2  
SCHINDLER J.R. CN  
SESSOM J.M. EOH2  
SMITH C.L. EON2

# E Company

## St. Thomas



AYERS  
G.E., CN  
TENN.



BARNABY  
N.G., BULCN  
S.C.



BARNES J.R.  
EADCN  
WASH.



BEATTY  
E.D., BULCN  
TENN.



BRITTS  
R.A., UTP2  
ILL.



BRUEN  
J.F., EAD3  
N.Y.



CANNON  
W.H., CN  
CONN.



COLCLOUGH  
C.L., UTPCN  
N.Y.



DORROH  
W.W., BULCN  
CALIF.



FREEO  
J.F., CN  
N.Y.



GILBERT  
R.A., CN  
GA.



GREEN  
W.K., CN  
KAN.



GRIMES  
L.D., SN  
IND.



HAMMOND  
R.A., UTP3  
N.Y.



HODGDON  
J.V., CS3  
MASS.



INMAN  
R.S., CS1  
PA.



JAQUIS  
R.P., CASCP  
IOWA



JOHNSON  
A.F., CN  
R.I.



KARR  
D.L., CN  
MO.



KEEHN  
R.F., BUH2  
N.J.



KENYON  
E.H., CN  
MASS.



KNIGHT  
R.L., CP  
GA.



KROPTAVICH  
R.J., CN  
CONN.



LEE  
K.J., CN  
IND.



LEWIS  
G.L., CEP2  
PA.



MAC DONALD  
P.M., BUL3  
MASS.



MARTIN  
M.J., SW1  
PA.



MATHEWS  
J.H., CN  
MASS.



MC NEFF  
D.J., UT1  
MICH.



MEDICI  
G.D., BURCN  
IOWA



MITCHELL  
D.E., CET3  
OHIO



MITCHELL  
R.T.,  
CN

## PERSONNEL NOT SHOWN

MONOSCALCO E.F. CN  
 DETMER R.L. CN  
 MAZZORANA R.J. EOH3



MYERS  
 J.J., BULCN  
 PA.



NACHMAN  
 A.T., CN  
 ILL.



NELSON  
 T.W., CES3  
 MICH.



BOGDANOWICZ  
 C.P., BUH3  
 MD.



OSBORNE  
 G.M., CMH3  
 ME.



PETERSON  
 R.S., BUL2  
 FLA.



PIERCE  
 J.J., CN  
 PA.



POLAND  
 J.T., CN  
 N.J.



PROCTOR  
 K.J., CN  
 MASS.



ROSENGART  
 W.F., BUL3  
 N.J.



RUSSELL  
 L.G., UTACN  
 MICH.



SCHULTZ  
 D.L., SWE3  
 OKLA.



SECOR  
 F.T., BULCN  
 ILL.



SKLAR  
 S.B., BUL3  
 N.J.



SOELLNER  
 G.W., BUL3  
 KAN.



STAFFORD  
 L.F., BULCN  
 ME.



STONE  
 W.G., CEP2  
 COLO.



TREADWELL  
 G.A., BUL3  
 ME.



TRUNZO  
 J.S., CN  
 PA.



WAINIONPAA  
 M.L., CN  
 OHIO



WANAMAKER  
 J.E., CN  
 MISS.



STALKER  
 A.L., CN  
 WISC.





# *Detachment Quebec*

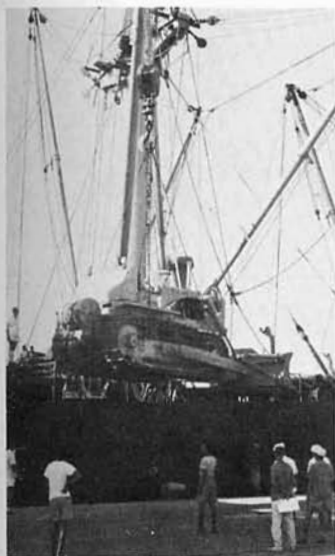
ON 11 OCTOBER, 1963 A GROUP OF MCB SEVEN SEABEES DEPARTED QUONSET POINT, RHODE ISLAND, ON A FLIGHT THAT WAS TO CARRY THEM ONE-THIRD OF THE WAY AROUND THE GLOBE TO NORTH AFRICA AND TO THE U. S. NAVAL COMMUNICATIONS STATION AT ASMARA, ETHIOPIA. HERE DETACHMENT QUEBEC, AS IT WAS OFFICIALLY DESIGNATED, UNDERTOOK "PROJECT PATSY" -- THE CONSTRUCTION OF A COMMUNICATIONS SITE AT GURA, ETHIOPIA, ABOUT 25 MILES AWAY. COMPRISED OF 43 MEN OF MCB SEVEN AND ONE OFFICER AND SIX ENLISTED MEN OF MCB SIX, DETACHMENT QUEBEC BECAME THE FIRST GROUP OF SEABEES TO SET FOOT ON ETHIOPIAN SOIL.



WE DIDN'T HAVE MUCH TIME TO TOUR THE COUNTRYSIDE OR OBSERVE THE LOCAL CUSTOMS -- AT LEAST NOT RIGHT AWAY. FROM THE DAY WE ARRIVED THE TASK OF MOVING INTO CAMP, GETTING SETTLED, AND RECEIVING SUPPLIES PROVED TO BE A FULL-TIME JOB. FORTUNATELY WE HAD THE SERVICES OF ETHIOPIAN "HOUSE-BOYS" IN THE BARRACKS TO EASE OUR OWN WORK LOAD. THEY DID ALL THE COMPARTMENT CLEANING, AND FOR AN EXTRA \$2.00 A MONTH, KEPT OUR SHOES, UNIFORMS AND BRASS SPIC IN' SPAN.



"THIS IS ASMARA? LOOKS MORE LIKE CAMP GRANADA."



"WATCH YOUR HEAD, NOW!"

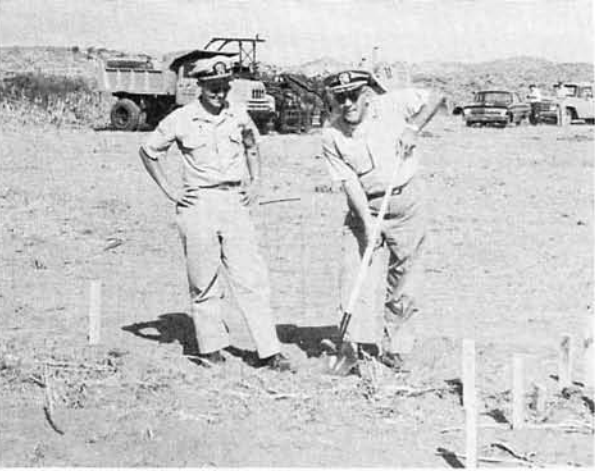


"LET 'ER DOWN, CHARLIE. SLOW AND EASY."

.....TO ARRIVE.

SUPPLIES CONTINUE.....





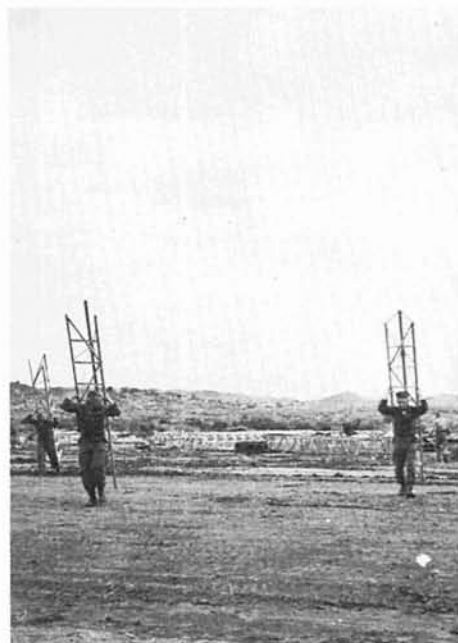
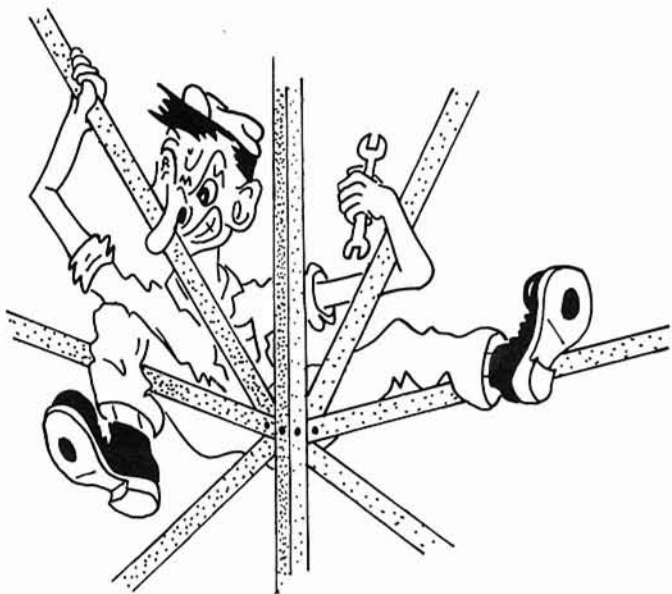
"PROJECT PATSY" INITIATED WITH A GROUND-BREAKING CEREMONY AND ...



...BACK-BREAKING LABOR.



"I KNOW YOU'LL GET ME OUT, BUT WHEN??"

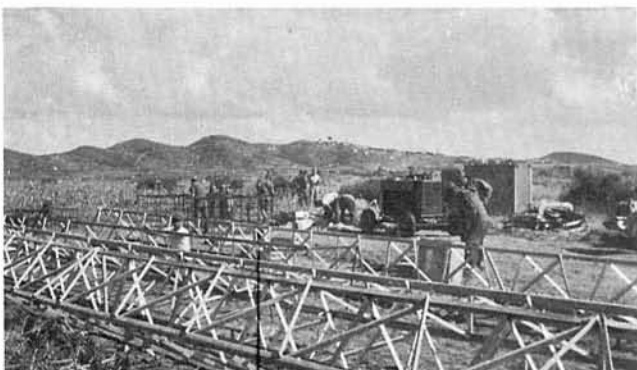


P.T. -- STEELWORKER STYLE

WORKING ON A TOWER FOUNDATION



ONE OF THE 22 ANTENNA TOWERS IS PIECED TOGETHER



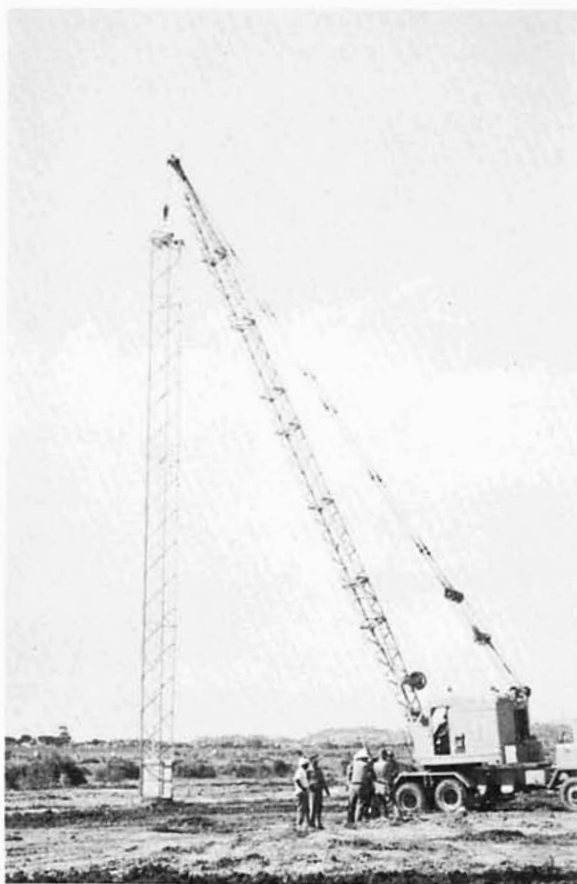


"THIS AIN'T PISA. SET IT STRAIGHT!"



"WATCH YOUR TOES."

SEABEES' ERECTOR-SET



"HELLOOOO DOWN THERE"

TWO'S COMPANY, THREE'S A CROWD.



OUR JOB WAS TO SLIGHTLY ALTER THE SILHOUETTE OF ETHIOPIA'S TALL MOUNTAINS BY ERECTING 22 ANTENNA TOWERS RANGING IN HEIGHT FROM 20 TO 130 FEET. EIGHT THOUSAND FEET ABOVE SEA LEVEL WE FOUND OURSELVES KNEE-DEEP IN MUD AND UP TO OUR NECKS IN TROUBLE. OUR ROLLING STOCK WAS NOT EQUIPPED TO RUN CONSTANTLY AT HIGH ALTITUDES, NOR WAS IT EQUIPPED WITH PONTOONS FOR NAVIGATING IN THE THICK OOZE. IN CONTRAST TO THIS MUD PROBLEM, SEVERAL OF THE TOWER FOOTINGS HAD TO BE DUG IN HARD, CORAL-LIKE ROCK, HARDLY PENETRABLE EVEN WITH JACK-HAMMERS. IN SPITE OF THESE AND OTHER DIFFICULTIES WE COMPLETED THE TOWERS ON SCHEDULE. WE ALSO Poured 24 PIERS FOR FOUR ELECTRONIC GEAR VANS, CUT A ROAD FROM THE MAIN HIGHWAY TO THE COMM SITE, AND LAID OUT A PARKING AREA. THEN IN EARLY DECEMBER WE HEADED HOME TO SPEND CHRISTMAS WITH OUR FAMILIES BEFORE JOINING THE BATTALION IN PUERTO RICO.





CEMENT MIXERS



"WONDER IF THE SUEZ STARTED THIS WAY?"



"NO, NO! IT'S OVER THERE!"



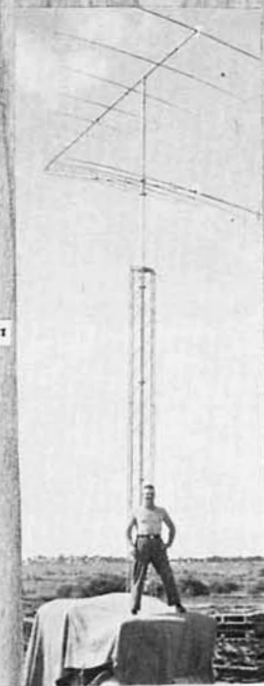
"SURE WE LOVE IT!"



EVERYBODY'S GOTTA GET INTO THE ACT!



"HANDLES JUST LIKE A CADDY."



OUR FEARLESS LEADER



"WASH A DIRT ROAD?"



"HEY, COME BACK! IT'S ONLY 1500."

"THAT'S SENIOR CHIEF...."



LOCAL SHORE PATROL



BEEPI BEEPI



"LET'S GO!"





DETACHMENT....



...QUEBEC'S....



...GOOD...



...SAMARITANS



"HOW ABOUT A LIFT TO THE NEAREST GAS STATION?"



POTENTIAL EAS



"THEY'RE A LITTLE SHY AT FIRST, MEN, BUT ONCE YOU GET TO KNOW THEM ..."



"CHIEF, I THINK I'VE BEEN HERE TOO LONG."



STEEP #2

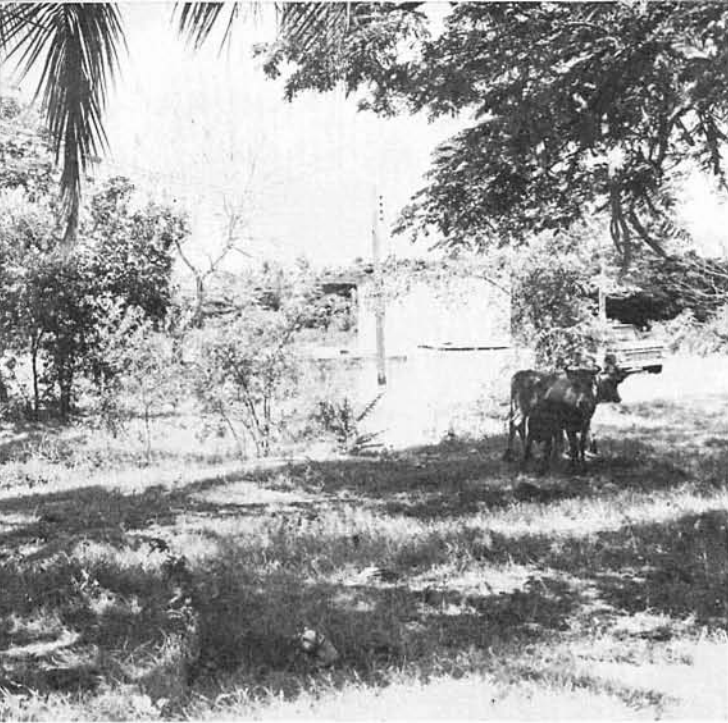
"HEY, GI JOE, GOT CIGARETTE FOR ME?"



"IS THIS WHAT PEOPLE WALK A MILE FOR?"

1800 MUSTER AREA





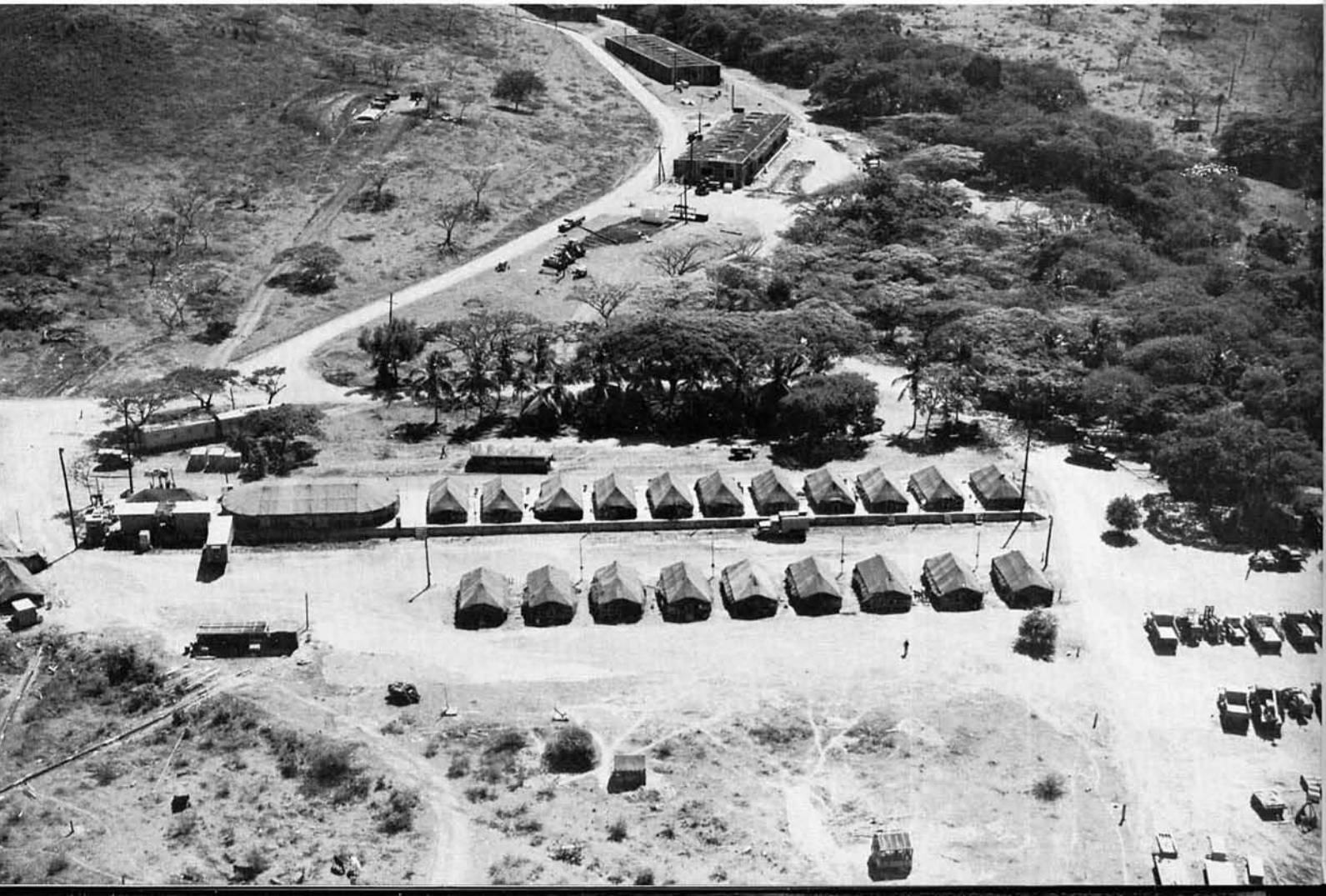
BEFORE -- OVERGROWTH...



DURING -- CONSTRUCTION...

# *Vieques Island*

AFTER -- TENT CITY...





SAWDUST SHOWER

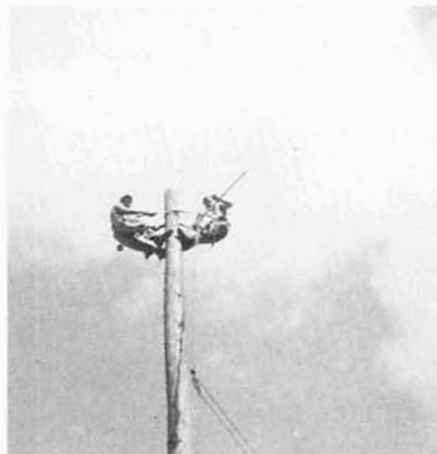
THE VIEQUES DETACHMENT WAS PERHAPS THE MOST WIDELY PUBLICIZED GROUP DURING THE PUERTO RICAN DEPLOYMENT, AND RIGHTFULLY SO.

THE SEABEES MOVED INTO AN ALMOST FORGOTTEN NAVAL INSTALLATION, OVERGROWN WITH WEEDS AND THORNY VINES, BUSHES, AND STRANGE PLANTS.

FIVE THOUSAND CATTLE INHABITED THE DESERTED NAVAL AMMUNITION DEPOT, ALONG WITH A MYRIAD OF CRAWLING INSECTS, ANIMALS, AND LIZARDS. LEFT BEHIND BY WWII SAILORS AND MARINES WERE A LARGE NUMBER OF MAGAZINES, A WAREHOUSE, AND A RAISED CONCRETE SLAB WHICH A WARTIME UNIT HAD BUILT.

DELTA COMPANY HAD TO ERECT 28 LARGE TENTS FOR LIVING AND OPERATION. THEY CLEARED THE AREA, AND IMMEDIATELY BEGAN THE ENDLESS FIGHT TO KEEP BRAHMA CATTLE AT BAY. THEY STRETCHED THE TENTS OVER STRONGBACK FRAMES BUILT ON THE SITE, AND COOKS BEGAN "BATCHING" OVER SIX FIELD STOVES. DISHES WERE WASHED IN GI CANS FILLED WITH SOAP AND WATER HEATED BY KEROSENE IMMERSION HEATERS.

ONE OF THE LARGER JOBS ON VIEQUES WAS NOT AN ASSIGNED REPAIR OR BUILDING PROJECT, BUT THE OPERATION OF A SUPPORT ACTIVITY, A QUARRY AND ROCK CRUSHER WHICH ULTIMATELY TURNED OUT 33,000 TONS OF CRUSHED ROCK.



"\*O@!! YOU SHOULD HAVE THOUGHT OF THAT BEFORE WE POLED!"



"HI, MARTY!"



RECIPE WRECKERS

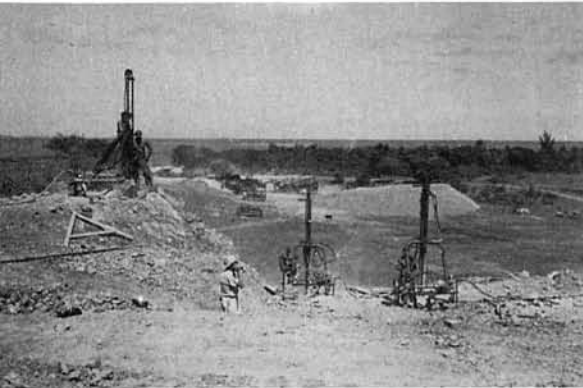


"MOMMA SAID THERE'D BE DAYS LIKE THIS -- BUT NOT THIS MANY!"

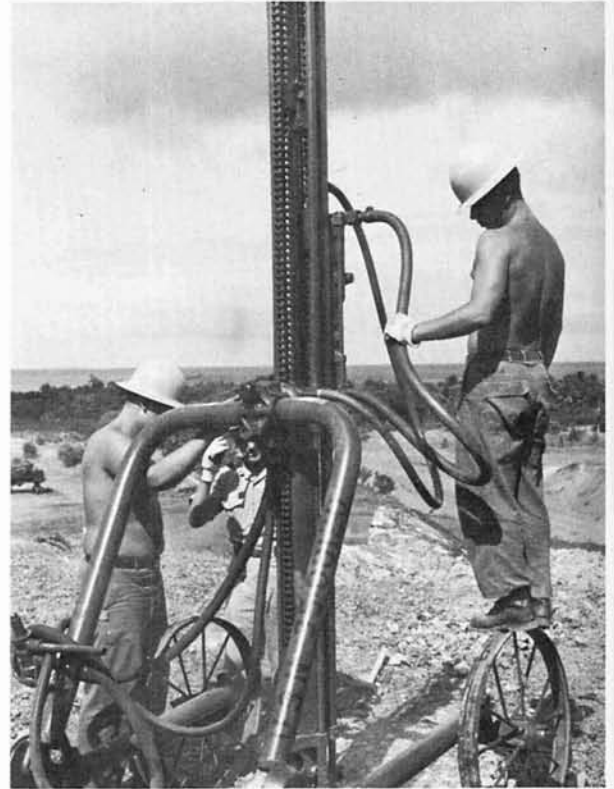
GETTING THAT MUCH ROCK CRUSHED WAS A PRETTY BIG ORDER. IT ALL HAD TO BE BLASTED LOOSE BY CHIEF HELMUTH "BOOM BOOM" TORNOE AND HIS DYNAMITE CREW. THE LARGE HUNKS OF ROCK FROM THE BLASTING WERE THEN HAULED BY THE EO'S TO THE CRUSHER FOR THE REFINING TREATMENT.



FUTURE ROCK CRUSHER SITE



PREPARING FOR A BIG BLAST



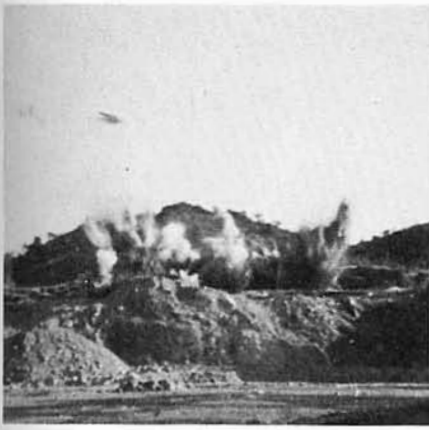
UBER AND ANDRESKY DRILL THE PILOT HOLE



THE "EIGHTY - D"

350 TONS OF CRUSHED ROCK PER DAY





BOOO O O O O O O O M!



LOAD 'ER UP!



CHIEF "BOOM BOOM" TORNOE



"THINK THIS RED LIGHT WILL EVER TURN GREEN?"



"IT'S UP -- NOW HOW'S IT COME DOWN???"





QUARRY OPERATION IN FULL-SWING



COWBOY BROWN RIDES THE RANGE



TEAMSTERS LOCAL NO. 777



DELTA RANCH ROUND-UP



EVEN THE CM'S WORK



"KNOCK THE FLEET ONCE MORE AND I'LL...."



EO'S HAD THEIR TROUBLES, TOO. THERE WAS THE NEVER ENDING JOB OF WRANGLING THE MANY CATTLE OUT OF THE RIGHT-OF-WAY AND OFF THE ROADS THAT WERE BEING WORKED. THERE WERE SEVEN AND A HALF MILES OF MAGAZINE ROAD THAT HAD TO BE CLEARED, GRADED, AND SURFACED WITH CRUSHED ROCK, THEN IT HAD TO BE COMPACTED SO THAT THE SEEMINGLY CONTINUOUS RAINS WOULDN'T WASH AWAY THE NEWLY FINISHED ROAD BEDS.



AREA DEVELOPMENT

"SORRY, ELSIE, BUT WE'RE GOING TO CUT A ROAD THROUGH HERE."



"OUTTA THE WAY! YOU'RE HOLDING UP PROGRESS!"

"HEY, R.A. PAY ATTENTION !!"



BUSY BEE -- IVAN BABBITT





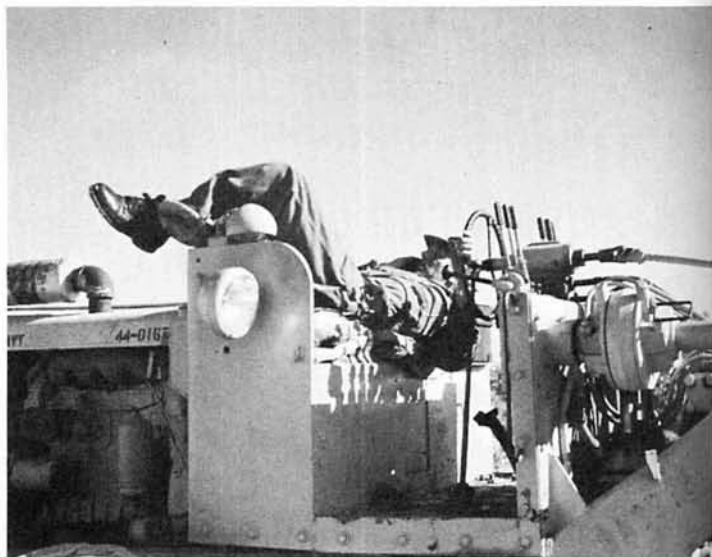


ZUGG BROTHERS KEEP SCORE

WHERE THERE IS EQUIPMENT THERE IS A NEED FOR MAINTENANCE. THE EQUIPMENT HELD UP PRETTY GOOD, TOO, WITH THE HELP OF OUR EXPERT MECHANICS. BECAUSE OF THE CRUEL ROADS AND SHARP STONES, THE ZUGG & ZUGG TIRE SHOP DID A THRIVING BUSINESS. IF A PIECE OF EQUIPMENT CEASED TO FUNCTION AS IT SHOULD THERE WAS A MECHANIC ON THE SPOT, AND THE MACHINE WAS RUNNING FULL CAPACITY IN RECORD TIME.



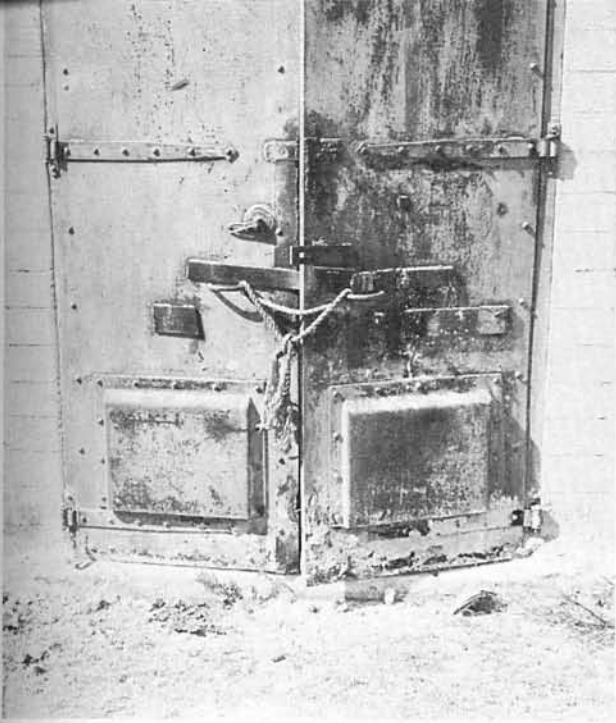
EDWARDS MAKES MINOR ADJUSTMENTS



TECHNICAL TRAINING



"YOU WOULDN'T THINK SUCH A LITTLE COCONUT COULD FOUL UP THIS BIG MACHINE."



WORK DEFINITELY WAS REQUIRED ....



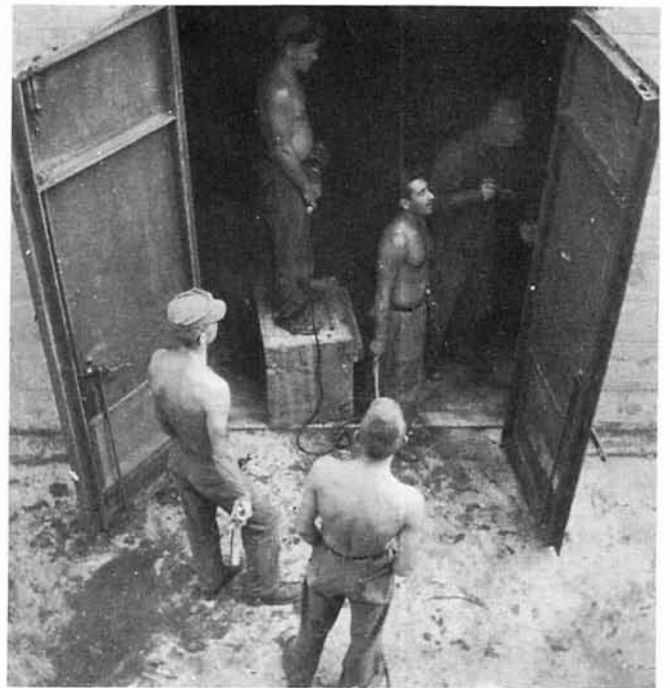
.... SO WE WORKED ....



.... AND WORKED ....

THE MAGAZINES WHICH WERE RESTORED BY DELTA COMPANY "RANCHERS" PRESENTED QUITE A PROBLEM TO THE STEELWORKERS, BUT "BLACKIES BOYS" KNEW THEIR STUFF. INCLUDED IN THE REACTIVATION OF THE 53 MAGAZINES WAS THE REPAIR OR REBUILDING OF STEEL DOORS, SANDING THEM SMOOTH AND PAINTING THEM.

THE DOORS WERE ONLY PART OF THE JOB, HOWEVER. BEFORE ANY WORK COULD BE DONE, BEES AND BATS THAT HAD TAKEN UP RESIDENCE IN THE MAGAZINES AND VENTILATORS HAD TO BE EXTERMINATED. THEN THE BROKEN VENTILATORS WERE REPLACED AND THE 8" X 8" OAK BUMPER RAILS WERE INSTALLED.



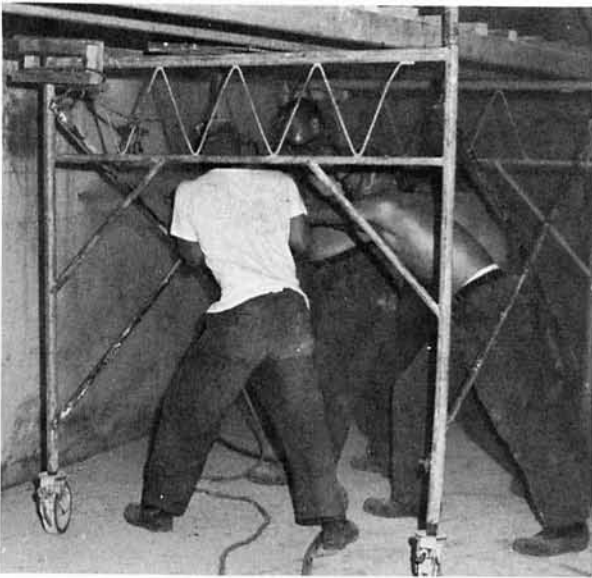
.... AND WORKED!



PERFECT SQUARES (THE WINDOWS, THAT IS).

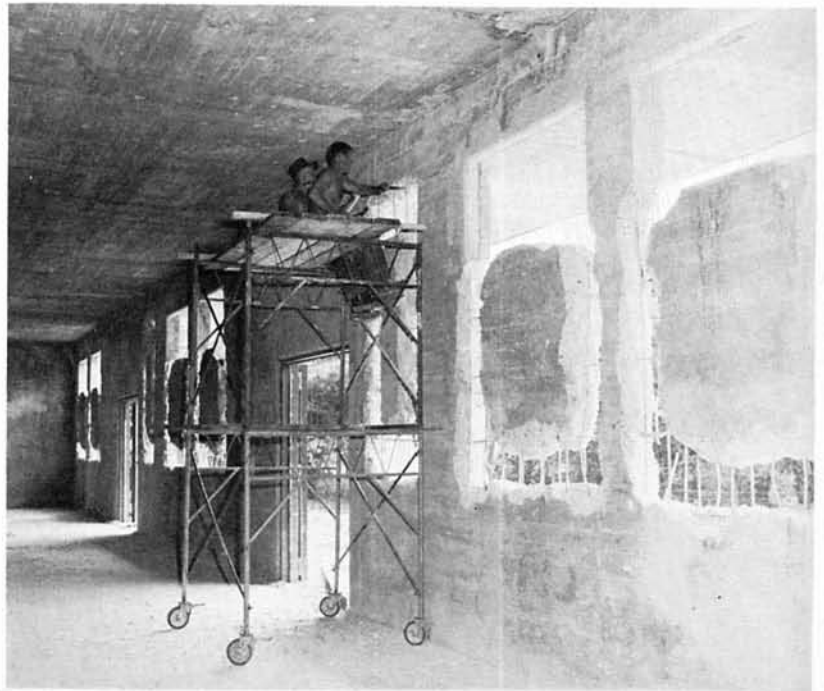
## *Building #401*

THE LARGEST VIEQUES PROJECT WAS RESTORING AN INERT WAREHOUSE, BUILDING NO. 401. FIRST A NEW ROOF WENT ON, THEN ELECTRICAL WIRING WAS REPLACED AND IMPROVED AND NEW PLUMBING WAS ROUGHED IN. NEW, LARGER WINDOW OPENINGS WERE BLASTED ALMOST PERFECTLY BY CHIEF TORNOE'S BLASTING CREW, AND OUR SEABEE BUILDERS SMOOTHED THEM UP AND INSTALLED ALUMINUM JALOUSIES AND SCREENS. PARTITIONS WERE BUILT AND FINALLY THE INTERIOR WAS PAINTED.

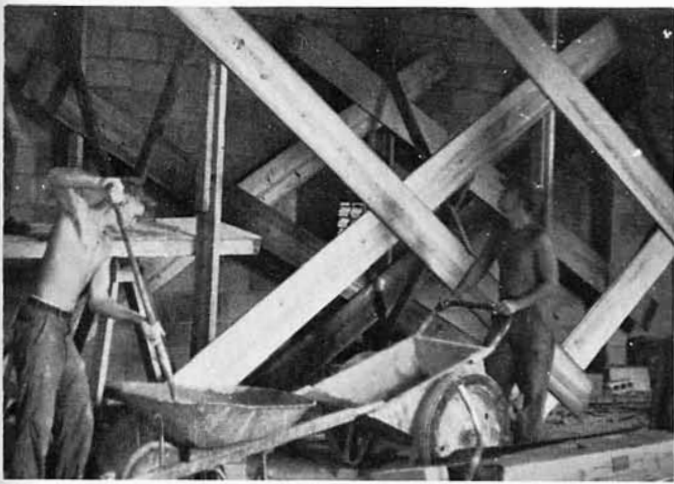


DENTIST STRIKERS???

LOOKIN' GOOD!



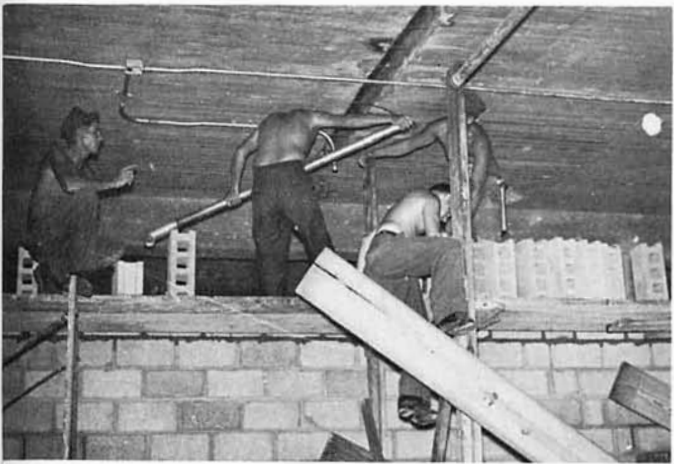
A SEPTIC TANK WAS INSTALLED AND THE BUILDING'S INTENDED USE BEGAN TO MAKE ITSELF EVIDENT. THE OLD STRUCTURE WAS ALMOST ENTIRELY REBUILT AND MADE INTO AN 80-MAN BARRACKS WITH COOKING FACILITIES, HEADS, RECREATION ROOM, AND BERTHING AREA.



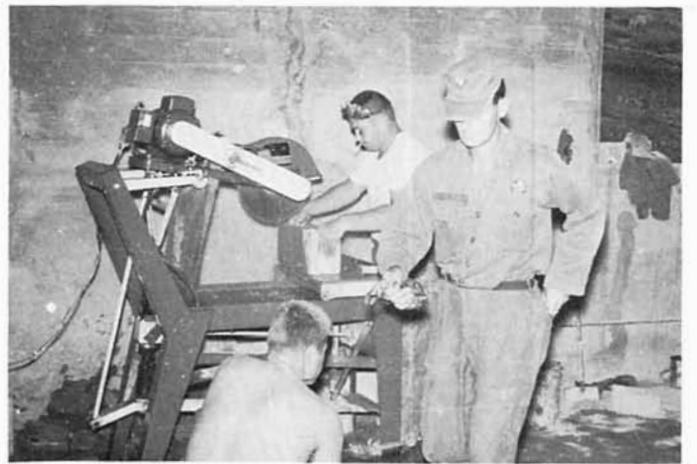
MIXING MORTAR



"HEAVE!!!"



ERICKSON'S CREW



BLOCK CUTTING



"GANGWAY!!"

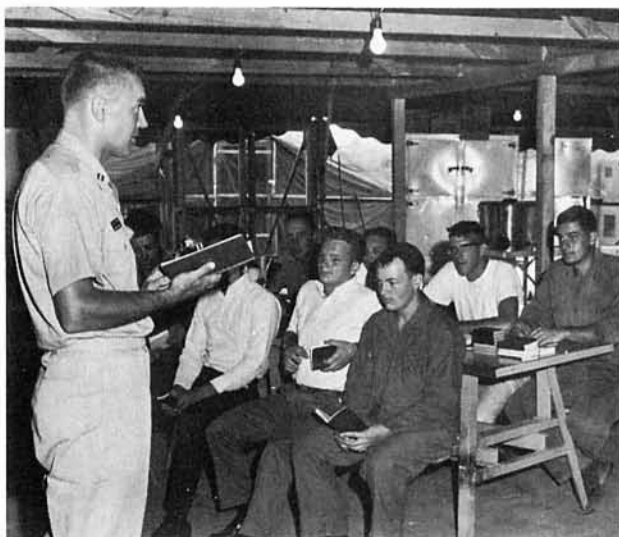


UT'S GET INTO THE ACT

VIEQUES LIFE PRESENTED A REAL CHALLENGE TO THE BEES OF DELTA COMPANY, AND THE WORK DAY WAS LONG AND HARD. IN SPITE OF THIS, HOWEVER, RECREATION AND MORALE DIDN'T PRESENT TOO LARGE A PROBLEM. THE BLUE, CLEAR WATER OF VIEQUES PASSAGE PROVIDED THE BACK-DROP FOR MUCH OF THE OFF-DUTY ACTIVITY, AND IT CAN'T GO WITHOUT MENTION THAT SUNDAY'S "HOLY HELO HOP" BRINGING CHAPLAIN YEICH AND THE MAILMAN WAS A BIG CONTRIBUTION TOWARD KEEPING BLACKIE'S BOYS IN HIGH SPIRITS.



HOLY HELO HOP



DIVINE SERVICES

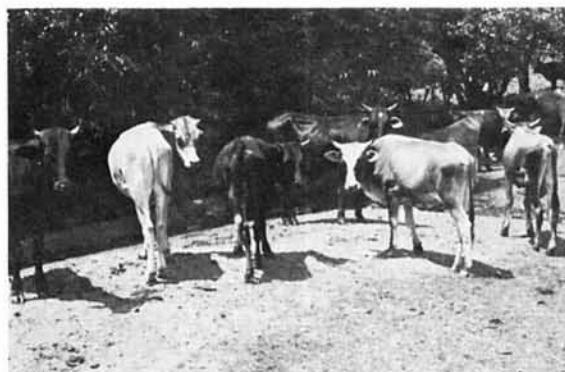


"COME-ON, KACZOR, ONE MORE SLICE, HUH?"

"IS THAT THE CATCH OR THE BAIT, MAY?"



BULL WHAT?!?!





ANKROM AT THE LATHE



A "WELL DONE" FROM BIG BRASS



A TREAT FROM MAINSIDE



"WHOOPS!"



NOBODY HERE DRINKS THAT!



"HI, MOM!"



SHERIFF GUNN AND HIS "WIRED EARPS"



HOOVER -- PERKINS -- CLARK



COMPOUND FRACTURES? INTERNAL INJURIES?  
MULTIPLE LACERATIONS? ... TAKE AN A.P.C.III



PLOTTING THE CRITICAL PATH

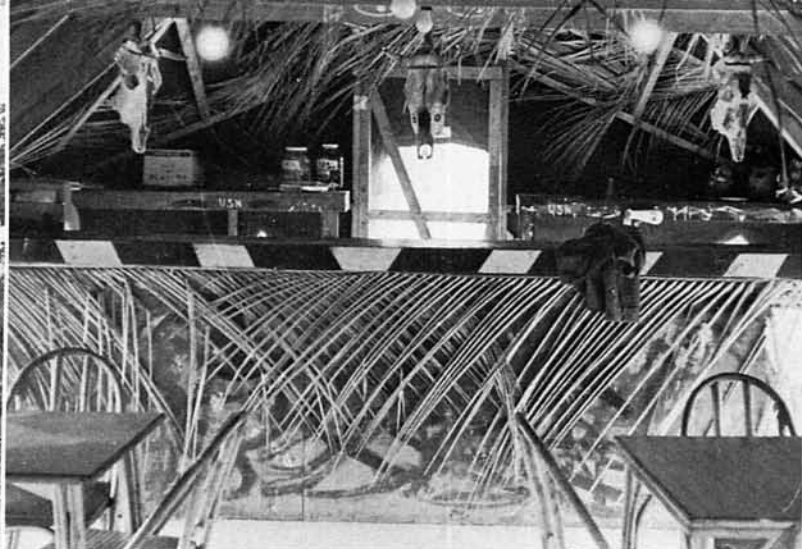
OH HAPPY DAY!



"I'VE GOT NOTHING TO BEEF ABOUT ---  
I'M GOVERNMENT INSPECTED."



CAMP CORONA -- OUTSIDE ....



.... AND IN.

SOMEWHERE OFF THE CRITICAL PATH



NOW WHAT???

A COOL ONE AT "POP'S"



CAMP CORONA WAS THE MAIN SOURCE OF ENTERTAINMENT (NATURALLY) ALONG WITH THE NAVY EXCHANGE OUTLET AND NIGHTLY MOVIES IN THE BIG MESSHALL TENT. CATTLE WATCHING WAS ALSO A PASTIME, HOWEVER, IT COULD HARDLY HAVE BEEN CALLED A FAVORITE -- IT WAS JUST AVAILABLE. OF COURSE, ON WEEKENDS THE "RANCHERS" WERE ABLE TO PULL OFF-BASE LIBERTY IN THE SMALL NEARBY TOWN. "BACK HOME IT WON'T BE LIKE THIS," SAY THE RANCHERS AS THAT LAST CORONA CAN BITES THE DUST. "IT'S THE Q.I. AND GOOD OLD 'GANSSETT."

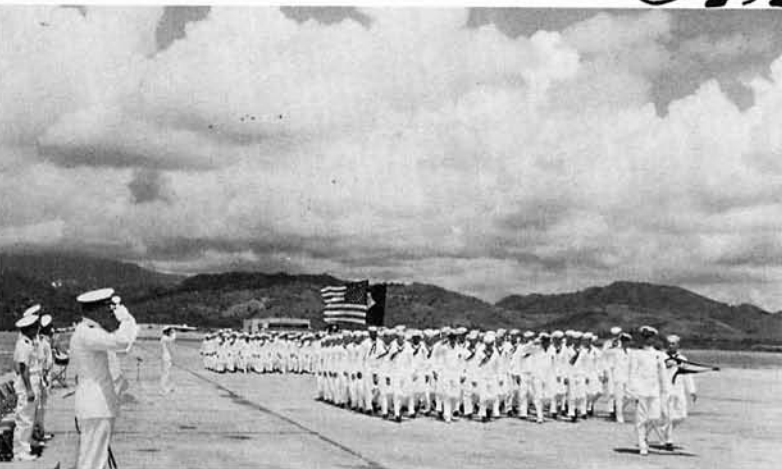


# *Ceremonies*



COLOR GUARD

# *And*



PASS-IN-REVIEW



RADM CALDWELL AND THE SKIPPER  
SALUTE THE COLORS



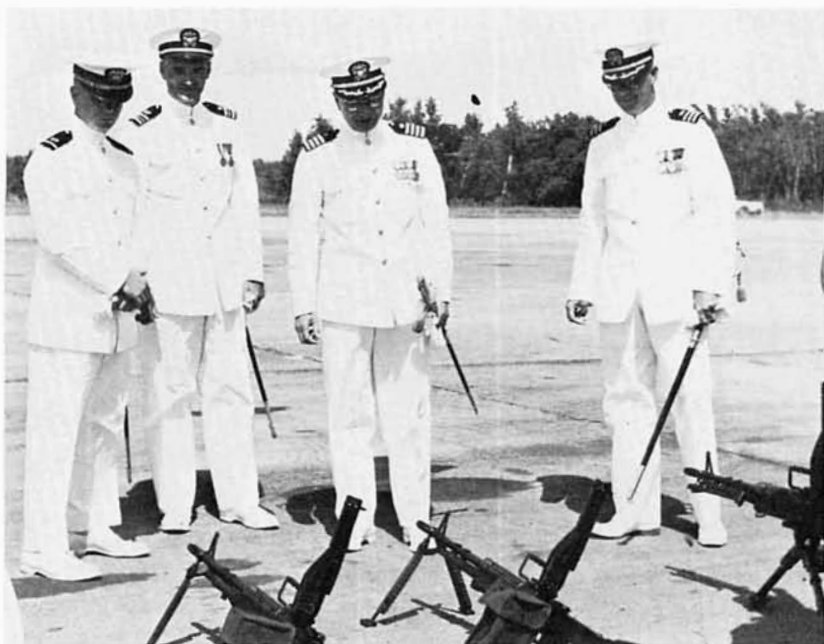
COMMODORE WOODING INSPECTS THE  
TROOPS

*V. I. P.'s*



"WHAT'S WITH THE SHOWER-SHOES, MURPH?"

VIEWING THE WEAPONS DISPLAY



"AND IF SQUIRREL HUNTING IS YOUR SPORT, ADMIRAL, HERE WE HAVE A ...."

IN SPITE OF BEING DEPLOYED ON THREE WIDELY SEPARATED CARIBBEAN ISLANDS OUR PROJECT SITES SEEMED TO DRAW V.I.P.'S LIKE A MAGNET. THROUGH OFFICIAL PASS-IN-REVIEW CEREMONIES AS WELL AS INFORMAL VISITS, WE HOSTED "BIG BRASS" FROM BUDOCKS, SERVLANT, CBLANT AND OTHER COMMANDS. SECRETARY OF THE NAVY, PAUL H. NITZE, ALTHOUGH NOT SPECIFICALLY VISITING MCB SEVEN, GOT A BIRD'S EYE VIEW OF VIEQUES OPERATIONS AS HE FLEW OVER THAT DEPLOYMENT AREA DURING A VISIT TO THE NAVAL STATION, ROOSEVELT ROADS.

"GEE, COMMODORE, COULDN'T YOU COME BACK TOMORROW?"

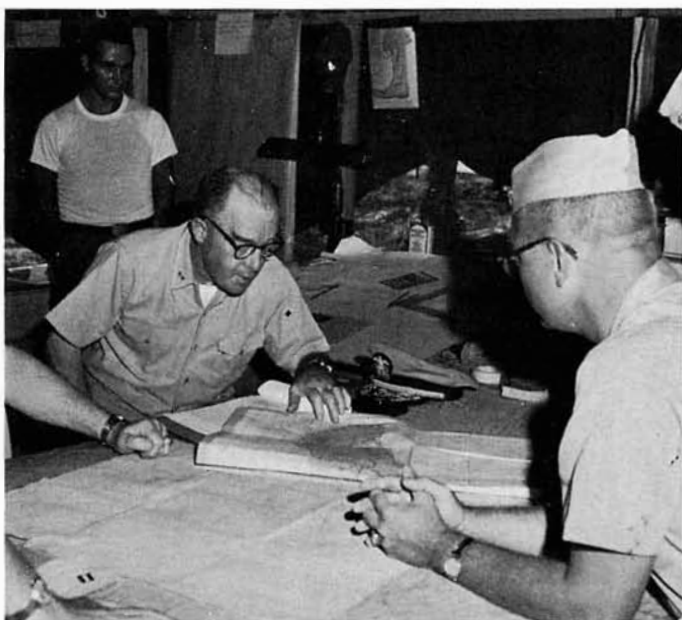




"HONESTLY, SIR, FINK IS MY NAME."



"MIGHTY NASTY CUT YOU HAVE THERE, CHIEF."



"JUST WHERE IS POP'S LOCATED ON THIS MAP?"



"THAT'S FUNNY. I JUST SHAVED THIS MORNING."

"WHITES? KHAKIS? CIVVIES? JUST WHAT IS THE UNIFORM-OF-THE-DAY, ANYWAY?"

OTHER VISITORS INCLUDED KENNETH E. BELIEU, ASSISTANT SECRETARY OF THE NAVY (I & L), RADM J. W. AILES, COMSERVLANT, RADM N. J. DRUSTRUP, DEPUTY CHIEF OF BUDOCKS, RADM G. W. PRESSY, A REPRESENTATIVE FROM THE OFFICE OF THE CHIEF OF NAVAL OPERATIONS, AND RADM H. H. CALDWELL, COMCARIBSEAFRON/COMTEN.

ALL OFFICIAL AND UNOFFICIAL VISITORS DURING THE PUERTO RICAN DEPLOYMENT SHOWED AN EXTREME INTEREST IN THE SKILL AND CRAFTSMANSHIP OF MODERN-DAY SEABEES AND WERE HIGHLY IMPRESSED WITH SEVEN'S MILITARY AND CONSTRUCTION CAPABILITIES.





FROM BULL ENSIGN TO "BOOT JG!"



"READ THE SIGN -- IT'S TRUE!"

OTHER LESS FORMAL CEREMONIES INCLUDED SUCH EVENTS AS ENS GAMBLE "DROPPING THE BOOT" WHEN MR. CORNUE MADE LTJG, "SELLING" AND "CHRISTENING" OUR VARIOUS PROJECTS, REENLISTMENTS AND, OF COURSE, OUR OWN 1964 SEABEE BIRTHDAY BALL. OUR SEABEE QUEEN, MISS TONITA COELLO, A STUDENT OF THE UNIVERSITY OF PUERTO RICO, WAS PERHAPS OUR MOST IMPRESSIVE GUEST (NO REFLECTION, ADMIRALS!).



"CONGRATULATIONS, SHOEMAKE!"



"PSSST ... YOUR SLIP IS SHOWING."



REINA HERMOSO (BEAUTIFUL QUEEN)

# Military Training



"RETREAT, HELL! WE'RE ADVANCING  
IN THE OPPOSITE DIRECTION!"



SMOKEY THE BEAR SAYS, "BREAK YOUR MATCHES  
IN TWO AND FIELD-STRIP ALL BUTTS -- HELP  
PREVENT FOREST FIRES."

"JUST LIKE MILKING A COW ..  
SQUEEZE, DON'T JERK."



CORNUE'S COMMANDOS



ALL READY ON THE RIGHT --  
ALL READY ON THE LEFT -- ETC.

"YOU CAN TELL IT'S MATEL, IT'S SWELL."





HIT THE BEACH!

THROUGHOUT THE CARIBBEAN DEPLOYMENT THE BATTALION MAINTAINED A HIGH STANDARD OF MILITARY READINESS IN ADDITION TO ITS CONSTRUCTION CAPABILITIES. EACH NEW MAN WAS PUT THROUGH A RIGOROUS TWO-WEEK TRAINING COURSE IN WHICH HE BECAME FAMILIAR WITH THE NOMENCLATURE AND OPERATION OF MODERN CONVENTIONAL WARFARE WEAPONS AND TACTICS



THE C.P. TEEPEE



JOHN WAYNE NEVER HAD IT SO GOOD.

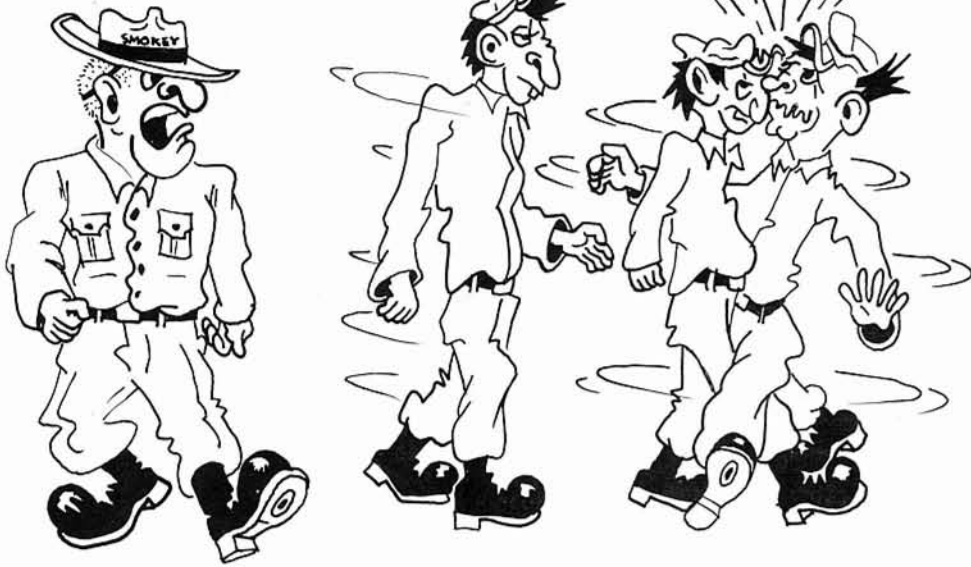
♪... AND THE SEABEES GO ROLLING ALONG. ♪



"ENEMY" HEADQUARTERS

IN SPITE OF A HEAVY CONSTRUCTION WORKLOAD AND THE LAST MINUTE FRENZY BEFORE PACKUP FROM PUERTO RICO, MCB SEVEN TOOK TWO DAYS OFF IN MARCH TO TEST ITS MILITARY STAMINA AND IMPROVE ITS DEFENSIVE FIGHTING SKILLS UNDER INSTRUCTION OF THE BEST TEACHER KNOWN -- EXPERIENCE. UNDER SIMULATED COMBAT CONDITIONS WE "HIT THE BEACH" OF VIEQUES ISLAND AND SLOWLY, CAUTIOUSLY MARCHED TO OUR OBJECTIVE TWO MILES DOWN THE BEACH, HERE WE CONDUCTED A FULL-SCALE DEFENSE EXERCISE (DEFEX) THAT WOULD HAVE APPEARED TO THE ONLOOKER AS AN ALL-OUT WAR.

LEFT FLANK---MARCH!!



SORRY, THAT'S NO LONGER THE  
PASSWORD . . . . BANG!!!



"WELL, WE MISSED THE TANK BUT THE  
BACK-BLAST BLEW AWAY OUR C.P."

P.O.W.'S



HARASSMENT & INTERROGATION, INC.





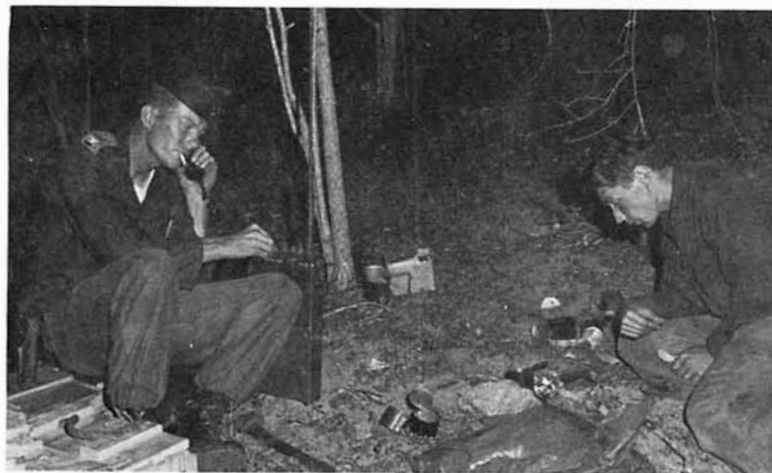
ALLY - ALLY - IN - FREE!



"YOU CAN TAKE MY RIFLE AND ALL MY AMMO, BUT DON'T TAKE MY M & M CHOCOLATE-COVERED PEANUTS."



50 PERCENT ALERT



"DER FUHRER? . . . VON RUTLEDGE HERE, GOT ANYTHING YOU WANNA SWAP FOR HAM AND LIMA BEANS???"

"I BET GOOD HOUSEKEEPING WOULD NEVER RECOMMEND THIS STUFF"



TANK ATTACK -- COURTESY OF ROMMEL & FRIENDS







RECON PATROL



"ALRIGHT ALREADY, I'LL COVER IT UP!"



"HEY, SKIPPER! LOOK WHAT I FOUND."



WHAT SORT OF MAN READS PLAYBOY?

ZZZZZZzzzzzzzzz.....



AUGGIE DOGGIE TAKES A "COCONUT BREAK"



TELL SOMEBODY WHO CARES



ROUTE 66 (MINUS THE CORVETTE)



"WHAT, US WORRY?"



A PAUSE FOR THE CAUSE



CORONA TIME



WAR IS HELL!

ABOUT 30 OF OUR MORE SEASONED BEES DONNED THE UNIFORMS OF "ENEMY" AGGRESSORS AND ATTEMPTED THROUGHOUT THE TWO-DAY EXERCISE TO INFILTRATE OUR DEFENSIVE PERIMETER WITH ANY AND ALL MEANS AVAILABLE. THESE INCLUDED WILD ALL-OUT ASSAULTS, SILENT MIDNIGHT SNEAK-ATTACKS, AND SIMULATED "TANK ATTACKS". FLARES BURST ALL NIGHT LONG SIGNALING RIFLEMEN AND MACHINE-GUNNERS ON THE MAIN LINE OF RESISTANCE (MLR) TO INCREASE OR DECREASE FIRE-POWER AS LOOKOUTS AND RECONNAISSANCE PATROLS KEPT THE COMMAND POST INFORMED OF THE PROXIMITY OF AGGRESSORS. AFTER ALL PATROLS HAD RETURNED TO CAMP AND IT WAS APPARENT WE HAD "WON THE WAR," THE BATTALION BEGAN THE HIKE BACK TO THE LANDING SITE. IT HAD BEEN A HOT AND TIRING TWO DAYS, BUT ALL HANDS AGREED WHEN WE REACHED THE LANDING THAT THE WHOLE THING WAS WORTH IT. AT THE END OF THE ROAD WAS A PLEASANT SURPRISE . . . A TRUCK-LOAD OF ICE . . . AND COLD BEER.



ANYONE KNOW A LULLABY FOR EXHAUSTED SEABEES?

# St. Thomas, V.I.



SHERATON ECHO

ST. THOMAS MAY BE THE TOP FUN SPOT OF THE VIRGIN ISLANDS BUT IT WAS CLEAR TO THE 60 MEN OF ECHO COMPANY THAT WE WOULD HAVE TO PAY FOR OUR FUN WITH SWEAT AND TOIL. THE ST. "T" PHASE OF THE CARIBBEAN DEPLOYMENT BEGAN IN FEBRUARY 1964. A DIFFICULT PROJECT HERE WAS THE BUILDING OF A SMALL BOAT LAUNCHING RAMP WHICH REQUIRED A LARGE EARTH COFFERDAM TO ALLOW FORMING EIGHT FEET BELOW THE NORMAL OCEAN LEVEL. IN ADDITION, WE HAD TO SCARIFY, GRADE, AND COMPACT 7,000 YARDS OF EXISTING ROADWAY AND PARKING AREA. WE THEN COATED THIS AREA WITH A CRUSHED ROCK AND BITUMINOUS SURFACE.



"... AND THE TRAVELING SALESMAN SAID TO THE FARMER..."

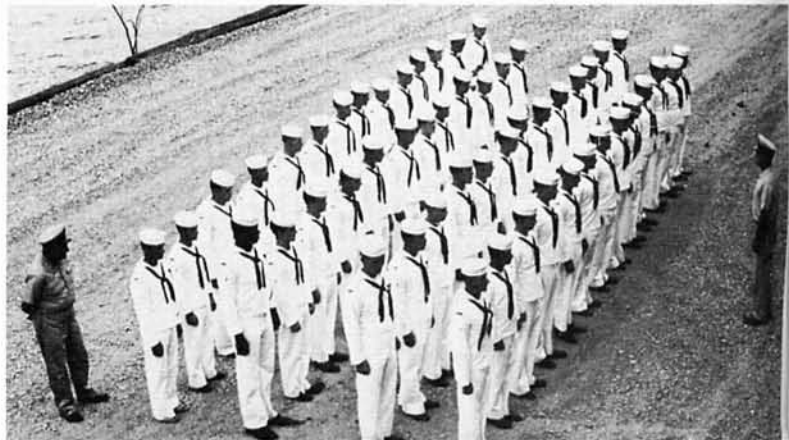


"... AND THE FARMER SAID TO THE TRAVELING SALESMAN..."

"IF AND WHEN YOU MAKE CHIEF, YOU TOO CAN WEAR KHAKIS."

ON PIER ALPHA WE INSTALLED 183 LENGTHS OF CONDUIT, INSTALLED THREE ADJUSTABLE POLES, 12 FLOOD LIGHTS, A PANEL BOARD, AND EIGHT WATERPROOF LIGHTING RECEPTICALS.

REPAIRS TO THE TWO BARRACKS INCLUDED REPLACING ALL FRESH AND HOT WATER LINES IN BUILDING NO. 18, REPLACING ALL SALT WATER LINES WITH PLASTIC LINES, REPAIRS TO ROOFS WITH A COVERING OF GLASS CLOTH AND COLD PROCESS ADHESIVE, REPAIRS TO 15 WINDOWS AND SIX DOORS IN BUILDING NO. 10, ELECTRICAL REPAIRS TO BOTH BUILDINGS, A FIRE ALARM SYSTEM FOR BUILDING NO. 18, AND OTHER "MISCELLANEOUS" REPAIRS TO BOTH.



IMPRESSED? THERE'S STILL MORE. WE BLADED, SCARIFIED AND COMPACTED 4,000 LINEAR FEET OF ROADWAY, PROVIDED A SIX-INCH SELECT FILL SURFACE, AND EIGHT REINFORCED CONCRETE PIPE CULVERTS FOR THE MAGAZINE AREA ROADS.

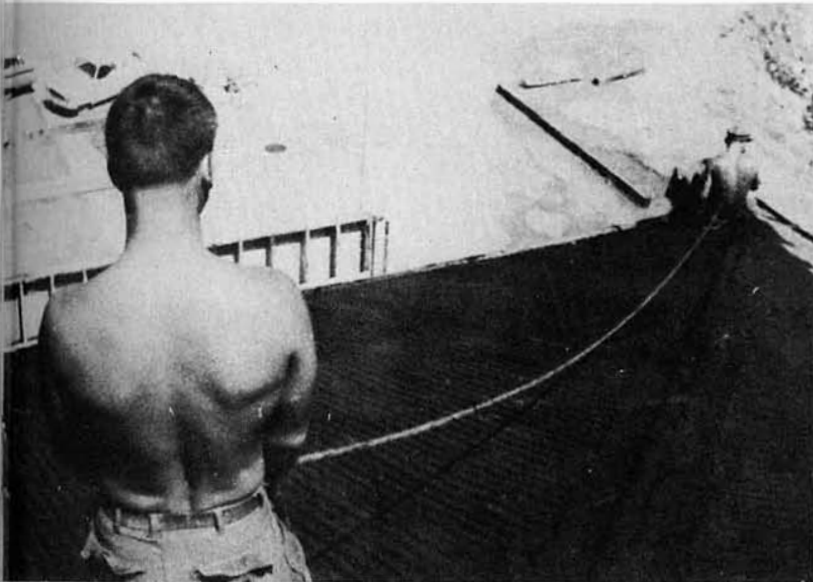
ALTHOUGH STARTED BEHIND SCHEDULE BECAUSE OF LATE MATERIAL DELIVERY, THE ST. THOMAS PROJECTS WERE NEARLY COMPLETE WHEN IT CAME TIME FOR THE BATTALION TO RETURN TO DAVISVILLE. WE LEFT BEHIND ONLY A SMALL REAR ECHELON TO APPLY THE FINISHING TOUCHES,

ALL THESE PROJECTS WERE DONE ON AND AROUND THE UNDERWATER DEMOLITION TEAM TRAINING FACILITY AND IT WAS WITH THE UDT'S THAT WE LIVED, WORKED AND "PLAYED,"

THE ST. THOMAS GROUP WAS HEADED BY LTJG OXLEY AND HIS "RIGHT-HAND-MAN," SENIOR CHIEF YERASHUNAS, OF DETACHMENT QUEBEC FAME,



"KNOCK OFF THE HORSE-PLAY, LEE!"



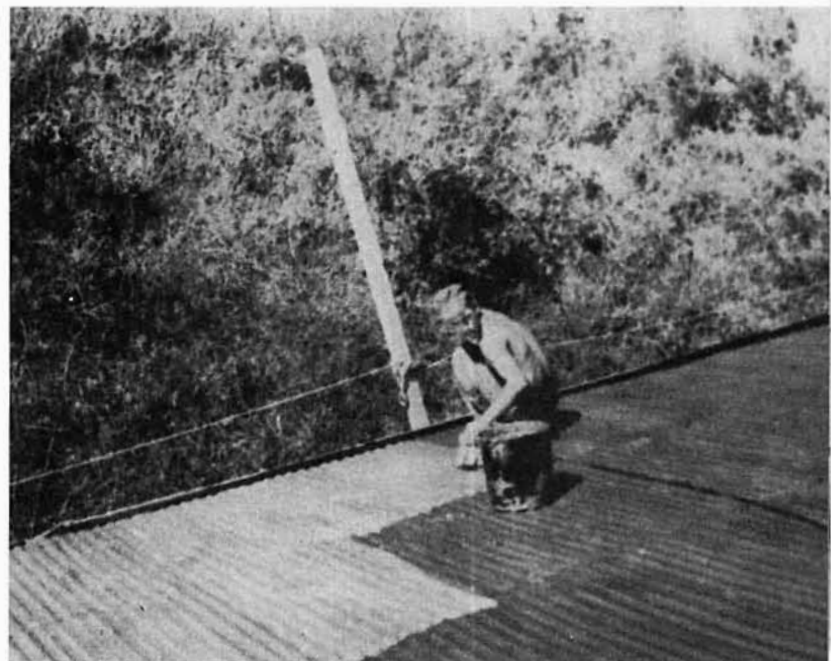
"PAY ME THAT FIN, MEYER, OR I'LL LET GO,"



"MY NAME'S NEAL." "MY NAME'S LEEMAN."



"DON'T LOOK NOW, BUT THAT PESTY PHOTOGRAPHER IS AROUND AGAIN."



"IS IT 1630 YET???"



THESE MEN ELECTRIFIED PIER ALPHA



ROADWAY TO MAGAZINE AREA

"I EXPECT SPECIAL LIBERTY AFTER THIS JOB, CHIEF,"



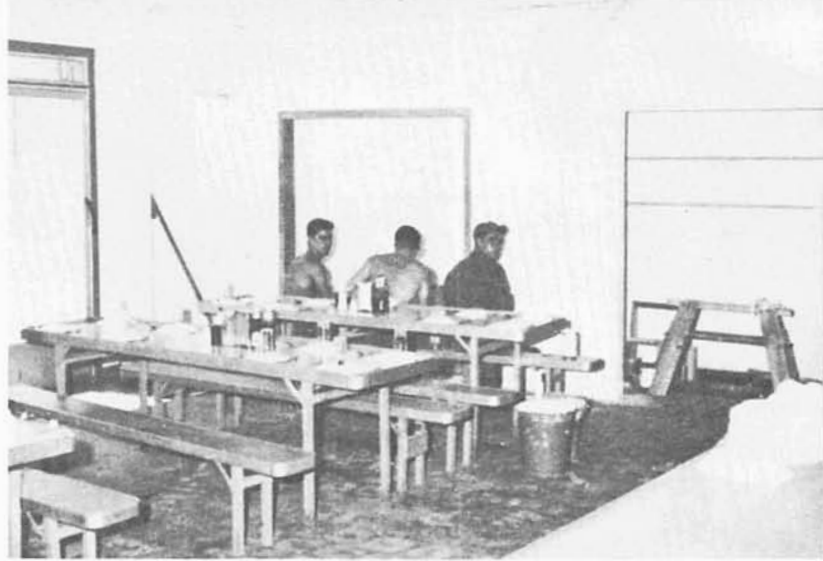
LAUNCHING RAMP NEARS COMPLETION



CONVENIENT SPOT FOR A JOBSITE



HOT SKINNY -- STRAIGHT FROM THE TOP



ALL THEY NEED IS A DUNCE CAP



LEWIS AT THE CON



TOO MANY CHIEFS, TOO FEW INDIANS.  
"WHAT A TIME TO RUN OUT OF MIXI!"

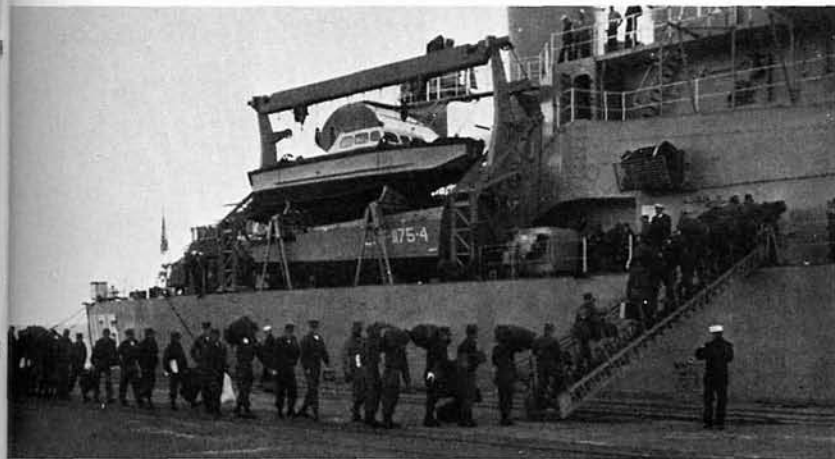
RING THE BELL AND WIN A CIGARI



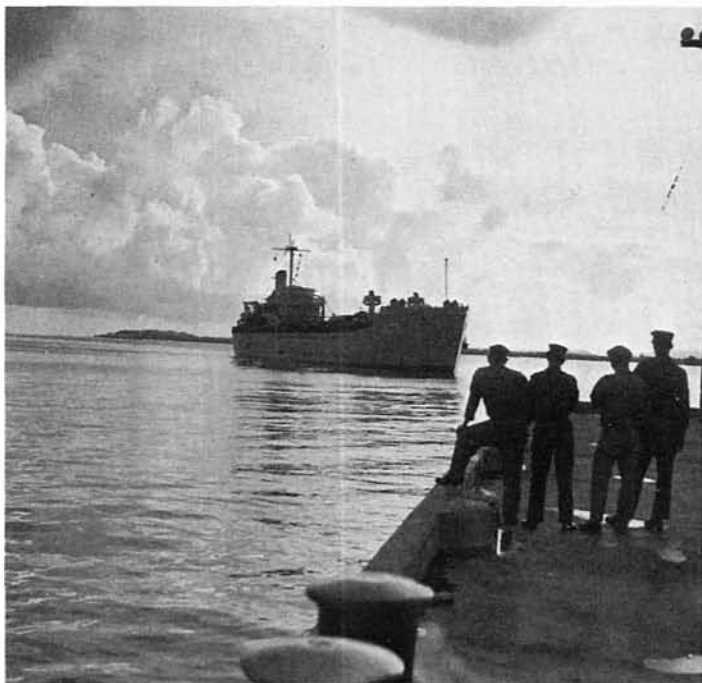


*Roosevelt Roads*





BOARDING THE USS YORK COUNTY (LST-1175)  
IN DAVISVILLE -- 40 DEGREES



ARRIVAL IN PUERTO RICO -- 80 DEGREES

WE HAD A LOT TO BE PROUD OF AT VIEQUES AND AT ST. THOMAS, BUT THE HIGH SPOT OF OUR DEPLOYMENT WAS ROOSEVELT ROADS FOR MOST OF THE BATTALION.

THE MAIN BODY OF THE BATTALION ARRIVED AT "ROOSEY" ON 19 NOVEMBER, 1963. HERE WE RESURFACED ROADS, INSTALLED 4160 VOLT FEEDER CABLES, DID REHABILITATION WORK ON A WATER FILTRATION PLANT, RAISED 600 FEET OF RAILROAD, AND BUILT A NEW ADDITION TO THE PUBLIC WORKS BUILDING. THERE WAS ALSO THE PIER JOBS FOR WHICH WE HAD TO SEND A NUMBER OF MEN TO SPECIAL DIVER'S SCHOOL TO LEARN THE UNUSUAL SKILLS NEEDED FOR THE TASK. THE PIER JOBS WERE AMONG THE FIRST PROJECTS UNDERTAKEN AND THE LAST TO BE COMPLETED. ALL OF THIS WAS IN ADDITION TO ROUTINE CAMP MAINTENANCE, MILITARY TRAINING AND TECHNICAL TRAINING. THEY WERE ALL BIG JOBS AND WE DID THEM THE BEST WE KNEW HOW WHILE BIG MEN OF THE NAVY LOOKED ON AND SMILED.

WE DID OTHER THINGS THAT ARE WORTH MENTIONING. WE LEARNED HOW TO DEFEND WHAT WE BUILD IN THE STYLE THAT WOULD EVEN MAKE WWII SEABEES STAND UP AND TAKE NOTE.

WE LICKED THE PANTS OFF SOFTBALL AND BASKETBALL TEAMS, LENGTHENED THE CHOW LINE, FILLED UP THE CLUB EL SCORPION, BOOSTED THE ECONOMY OF THE NEARBY TOWN OF CEIBA, LEFT MANY FOOTPRINTS IN THE SANDS OF LUQUILLO BEACH, AND GENERALLY LET PUERTO RICO KNOW THAT WE WERE AROUND.



STEEL BAND



# A Company



ALPHA COMPANY "HONCHOS"



MC QUEEN'S PUBLICO SERVICE



"HONEST, SIR, WE'RE JUST PLAYING OLD MAID."



"THE SIGN SAYS KEEP OUT, SO WE'RE KEEPING OUT."



"WHAT'S SO FUNNY, TERRILL?"

THIEL'S HANGOUT





"I COULD HAVE SWORE WE TOOK 'EM OUT OF HERE!"



"THEY KNOW SOMETHING'S MISSING, BUT THEY CAN'T QUITE FIGGER OUT WHAT."



"HITTING THE JUG AGAIN, WARREN?"



PUFF...QUICK TIME...PUFF...HARCH!!!



"THE GREASER"



PORTABLE...



...ASPHALT....



....PLANT



"GET OUTTA DE WAY!"

"WHY THE WHITE HAT? GREENS ISSUE OUT OF BUSINESS???"



"MMMMMMANI THTHIS IS RRRROUGH!"





L.H.S. OPERATORS



PEAPICKER'S PAVERS



FRONT END LOADER AT WORK

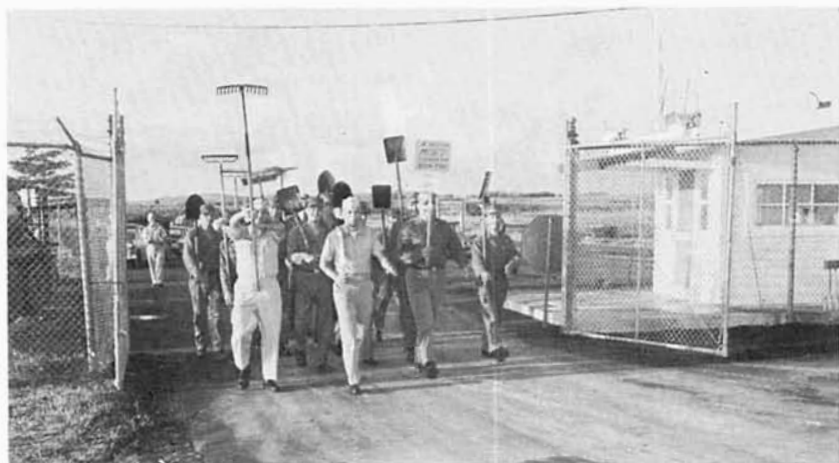
ALPHA COMPANY HAS SOMETHING TO BRAG ABOUT, TOO.

WITH LTJG FERMO RAM-RODDING, WE "HERDED" A COUPLE MILLION DOLLARS WORTH OF HEAVY EQUIPMENT ALL OVER ROOSEY ROADS, AND HAD A HAND IN JUST ABOUT EVERY PROJECT THERE WAS.

THE ONE PROJECT WE REALLY CAN CALL OUR OWN WAS THE ROADWORK. WE SCARIFIED, BLADED AND COMPACTED 4.58 MILES OF ROAD, AND HAULED 5,000 YARDS OF SELECT FILL MATERIAL AND 2,000 YARDS OF STABILIZED BASE COURSE AGGREGATE TO INCREASE ROAD ELEVATION ALONG A 2,200-FOOT DISTANCE.

TO GIVE IT THAT "FINISHING TOUCH" WE LAID TWO INCHES OF ASPHALT ON THE ROADS AND RE-SURFACED THE PARKING LOT INSIDE GATE NO. 1.

LAUDING THE EO'S HAS ITS PROPER PLACE HERE, BUT THEY COULDN'T HAVE DONE IT WITHOUT THE HELP OF THE CM'S WHO WERE ON THE JOB ALL OF THE TIME KEEPING OUR ROLLING STOCK AND MACHINERY WORKING LIKE FINE WATCHES.



GATE ONE COMPLETION PARADE

# B Company



"PUT YOUR BACKS IN IT, MEN!"

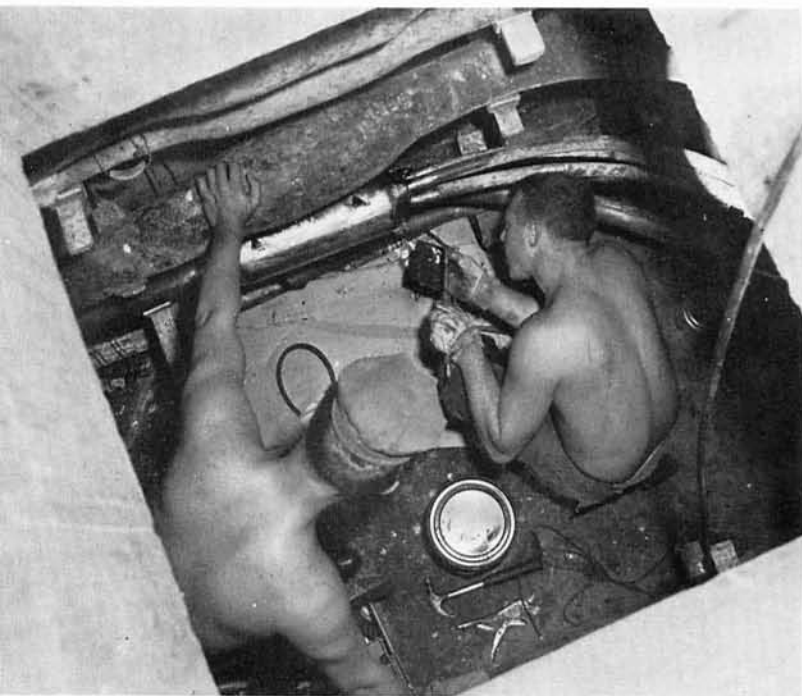


"SMILE! YOU'RE ON CANDID CAMERA."

WE HAD OUR HANDS FULL IN BRAVO COMPANY, TOO.

FIRST WAS THE 4160 VOLT FEEDER SYSTEM LINE TO THE DRY DOCK. THE CE'S REPAIRED TWO HIGH-VOLTAGE FEEDERS FROM THE POWER PLANT TO THE DRYDOCK SUBSTATION. IT INCLUDED REMOVING EXISTING SINGLE CONDUCTOR CABLES AND CLEANING OUT THE DUCTS WITH MANDREL AND WIRE BRUSH. THEN WE PULLED IN THE NEW CABLE AND MADE 23 SPLICES. SOUND SIMPLE? NOT SO! THE LENGTH OF THAT CABLE WAS 8,200 FEET LONG!!!

STILL MORE! THE FILTRATION PLANT WAS NO SPARE TIME TASK FOR THE UT'S, EITHER. WE REPLACED TEN GATE VALVES AND FIVE CHECK VALVES IN THE PUMP ROOM AND INSTALLED A SIX-INCH GATE VALVE AND 60 LINEAR FEET OF DRAIN PIPE TO THE INLET CHANNEL OF THE SEDIMENTATION BASIN. THEN WE INSTALLED ONE 16-INCH CHECK VALVE IN THE MAIN WATER DISTRIBUTION LINE. DON'T LET THE BIG WORKS THROW YOU. IT WAS A LOT OF WORK AND IT COST MORE THAN NINE GRAND!



CABLE SPLICING TIME

"HOPE THE JUICE IS TURNED OFF."





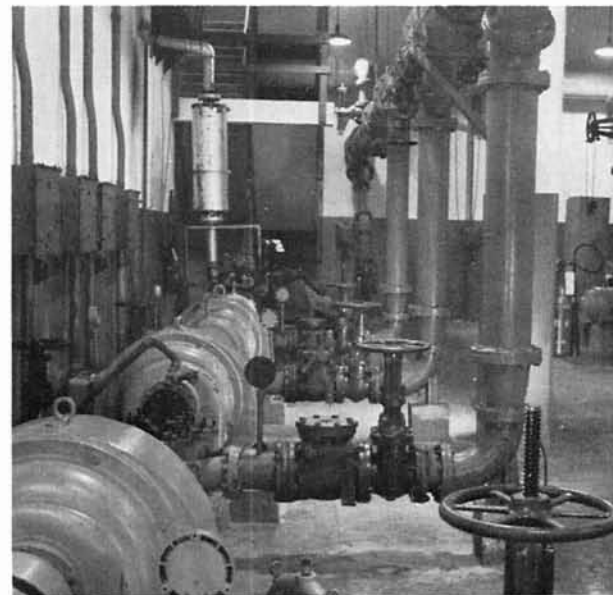
"IS THIS THE SHORT-CUT TO  
LUQUILLO BEACH?"



CAMP IMPROVEMENT -- A NEVER-  
ENDING TASK



HILL'S HERD



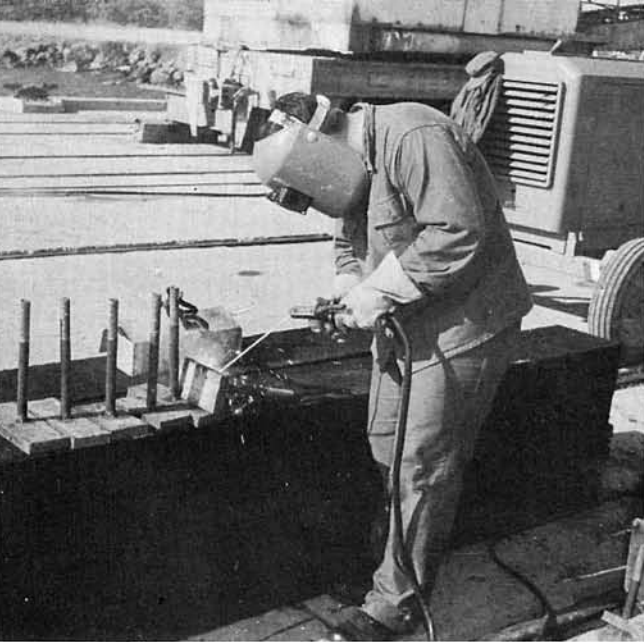
WATER FILTRATION PLANT



BEAL'S BOYS

WHAT A WAY TO SPEND CHRISTMAS!



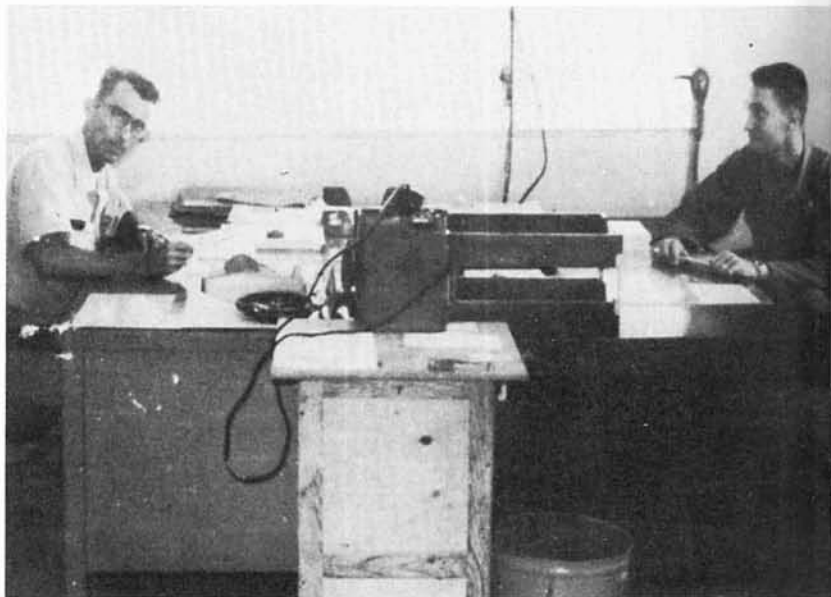


MORE SECURE THAN GLUE



"DURHAM, STOP DANCING AND LOOK AT THE CAMERA!"

RIDE 'EM COWBOYS!



BRAVO COMPANY OFFICE



B COMPANY CARPENTERS



ONE LAST ITEM THAT MUST BE MENTIONED IS THE HEAVY EQUIPMENT SHOP WHICH OUR SWIS BUILT FOR THE NAVAL STATION PUBLIC WORKS DEPARTMENT. WE ERECTED A 24 X 96 FOOT LEAN-TO TYPE STRUCTURE AS AN ADDITION TO BUILDING NO. 31. THE BUILDING WAS OF STEEL CONSTRUCTION WITH A TREATED CONCRETE DECK AND A CORRUGATED ASBESTOS CEMENT ROOF.

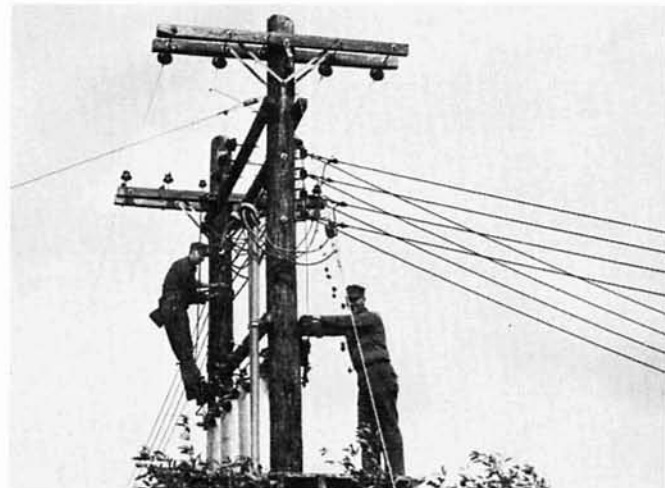
ON TOP OF THESE JOBS (WHILE WE WERE "RESTING!"), BRAVO COMPANY PLAYED A LARGE PART IN THE REHABILITATION AND MAINTENANCE OF THE SEABEE CAMP.



ANDY GRIFFIN ON THE POLE



"OH HUM ... ONLY ONE MORE MONTH."



NOW YOU CAN DIAL DIRECT TO UPPER SLOBOLIA

MAIL FROM HOME





# C Company

THE MEN OF CHARLIE COMPANY UNDERTOOK ONE OF THE BIGGEST WORK EFFORTS AT ROOSEY, AND PITCHED IN WHERE NEEDED ON MOST OF THE OTHER PROJECTS, TOO.

THIS WORK INVOLVED THREE PROJECTS RELATING TO PIER REPAIR. THESE INCLUDED REPLACING PILINGS OF NEARLY EVERY TYPE IMAGINABLE -- DRIVEN PILES, SOCKET PILES AND SUSPENDED PILING.

THE MAJOR PROBLEM ENCOUNTERED WAS DAMAGE TO THE FENDER SYSTEMS DURING THE CONSTRUCTION WORK. CIVILIAN BARGES AND NAVY VESSELS WERE CONTINUALLY USING THE FACILITIES, MAKING IT NECESSARY FOR US TO REPAIR ALREADY ACCOMPLISHED WORK BEFORE THE FINISHING TOUCHES COULD BE MADE.

ANOTHER PROBLEM WAS SCHEDULING THE WORK ACCORDING TO THE AVAILABILITY OF THE PIERS. WORK HAD TO BE ACCOMPLISHED WHEN NO SHIPS WERE TIED UP AT THE PARTICULAR PIER BEING WORKED ON.



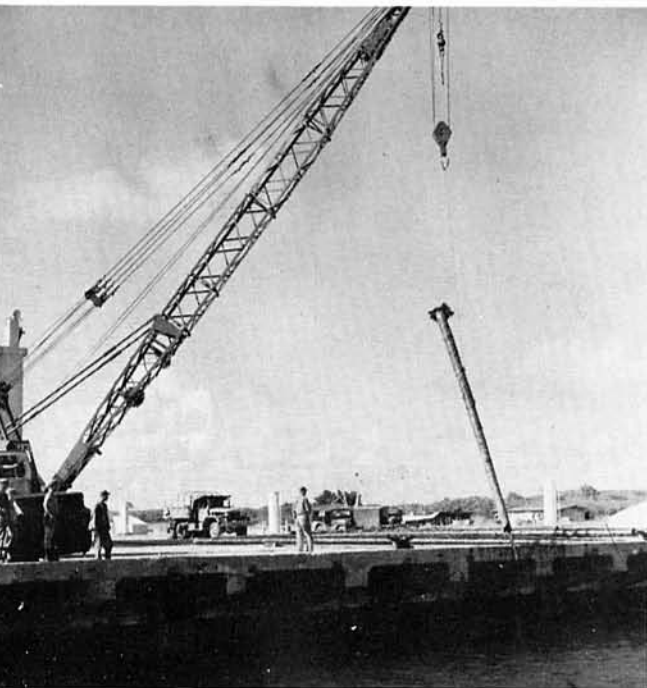
SEVEN'S OWN LLOYD BRIDGERS



"MAN, THIS CREOSOTE BURNS!"

"NEXT!"

"JUST LIKE PULLING TEETH."





"CARE FOR A SLICE?"



CHARLIE COMPANY OFFICE

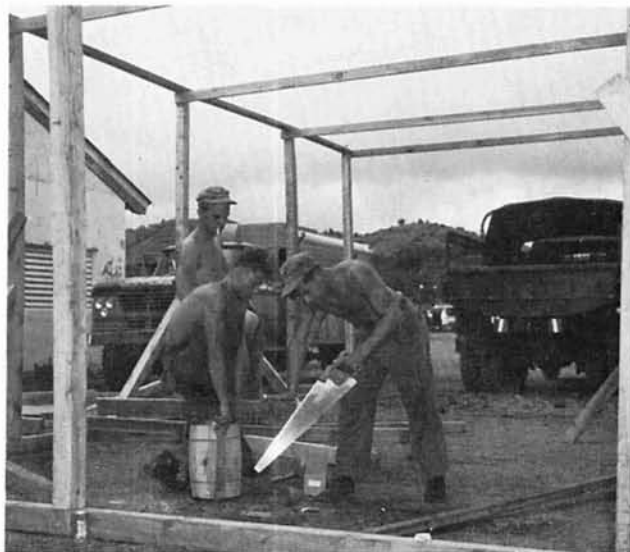


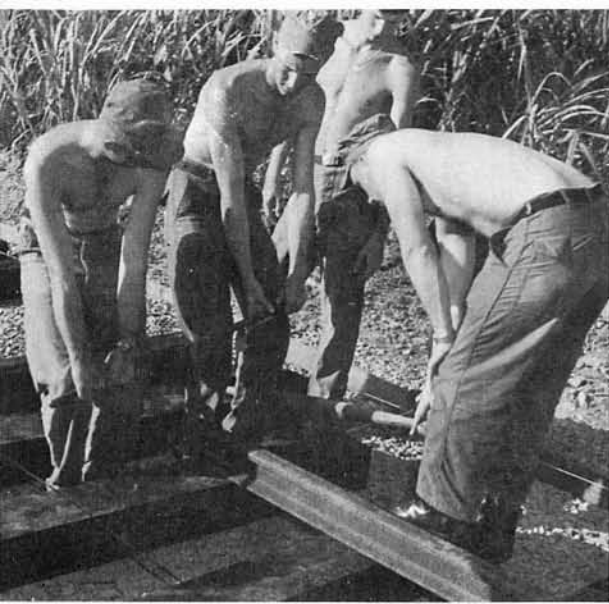
"IT WILL FIT IF YOU GET YOUR ?XIS&?;  
FOOT OUT OF THE WAY!"

"....AND BOLTON, YOU'LL GO DOWN AND  
OUT FOR A LONG PASS."



"SAW? NAILS? HEY, WE'RE MECHANICS!"





GANDY DANCERS



"SUPPOSE WE GOT ENOUGH MEN TO HANDLE THIS JOB?"

SWEET CHARLIE BROWN

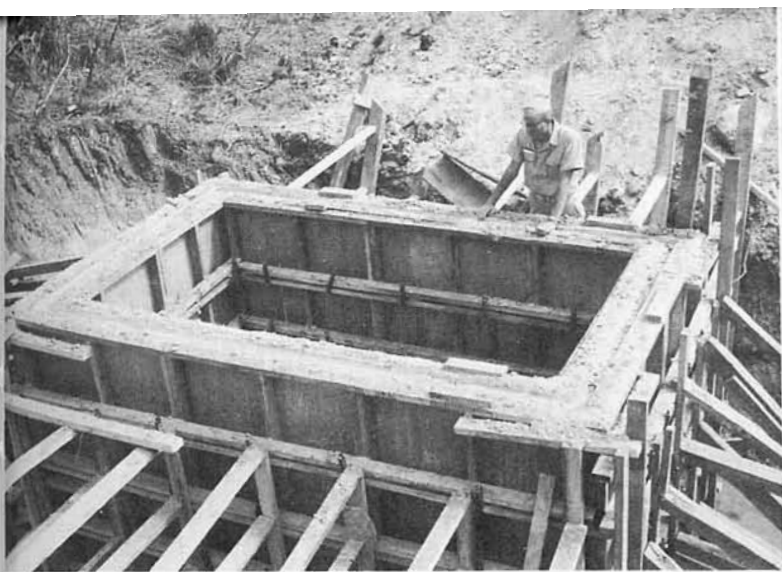


SUGAR CANE SPECIAL



THE CROWNING BLOW





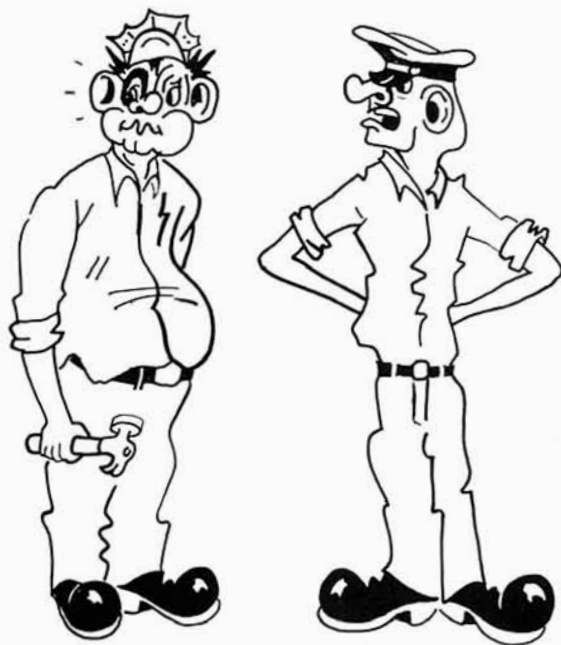
"HMMMM. I WONDER WHAT THIS IS GOING TO BE."



"YOU BACK AGAIN?!?!"



CHARLIE COMPANY MASCOT



---AND THE NEXT TIME YOU SALUTE---  
TAKE THE HAMMER OUT OF YOUR HAND!

FOR THE FIRST TIME IN SEVERAL YEARS SEABEES UNDERTOOK THE REBUILDING OF A RAILROAD. WE RIPPED UP AND RELAID 600 FEET OF TRACK EIGHT INCHES ABOVE THE ORIGINAL BED. THIS JOB WAS REQUIRED IN CONNECTION WITH THE ELEVATION OF THE APPROACH ROAD TO GATE NO. 1.

A KEY PART OF THE JOB REQUIRED THAT THE RAILROAD BE USABLE BY 1 JANUARY, WHEN THE SUGAR CANE HARVEST SEASON BEGAN. WE STARTED ON THE PROJECT SHORTLY AFTER THE BATTALION'S ARRIVAL AT ROOSEY ROADS IN LATE NOVEMBER. WE HAD A REAL TIGHT SCHEDULE FOR SUCH A BIG JOB, AND WE WERE BUCKING BAD WEATHER ALMOST EVERY STEP OF THE WAY. HOWEVER, THE JOB WAS FINISHED RIGHT ON SCHEDULE. TO DO THIS WE HAD TO WORK SEVEN DAYS A WEEK AND EXTENDED HOURS UNTIL THE JOB WAS DONE.

ON 2 JANUARY, ROBERT F. ANDERSON, FIELD MANAGER FOR THE C. BREWER COMPANY, INC., THE LOCAL SUGAR COMPANY, DROVE THE CEREMONIAL "GOLD" SPIKE MARKING THE OFFICIAL OPENING OF THE SEABEE-BUILT RAILROAD.

"YEA, WE'RE IN C COMPANY -- SO WHAT?!?!"



# H Company



THE RACKETEERS



"WELL, IF WE MUST WORK, WE MIGHT AS WELL TAKE ALONG SOME EQUIPMENT."

HEADQUARTERS COMPANY IS OFTEN JOKINGLY REFERRED TO AS "OVERHEAD," BUT DURING THIS DEPLOYMENT WE WERE ANYTHING BUT. THIS COMPANY IS COMPRISED OF SURVEYORS, DRAFTSMEN, AND ALL OTHER RATINGS INDIRECTLY CONCERNED WITH THE ACTUAL CONSTRUCTION ASSIGNMENTS. H COMPANY IS THE SUPPORT GROUP THAT ENABLES THE BATTALION TO OPERATE AS A SELF-SUSTAINING UNIT, AND WE DID EVERYTHING FROM BANDAGING SORE THUMBS TO WRITING REPORT CHITS.

WE SURVEYED AND CHARTED AND MADE BLUE PRINTS. WE CUT HAIR, WASHED CLOTHES, CURED THE SICK, LAME, AND LAZY, PLANNED AND EXECUTED MILITARY AND TECHNICAL TRAINING, AND PAID MAN.



WHAT A LIFE!



"A LITTLE NONSENSE NOW AND THEN...."





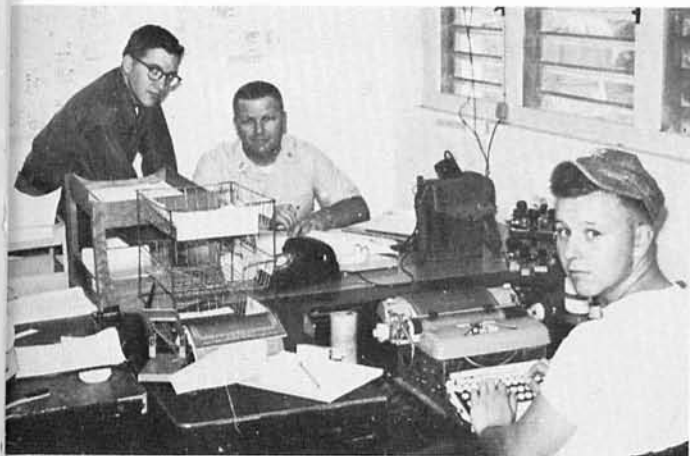
DRAFTING & LEROY DEPT



"OUR HIGHLY SKILLED AND INTELLIGENT PERSONNEL ARE EAGERLY WAITING TO SERVE YOU."



P & E (PLANNING AND ERASING)



TIMEKEEPERS



TRAINING -- HAVE PINS, WILL ASSIGN!



ADMIN STAFF

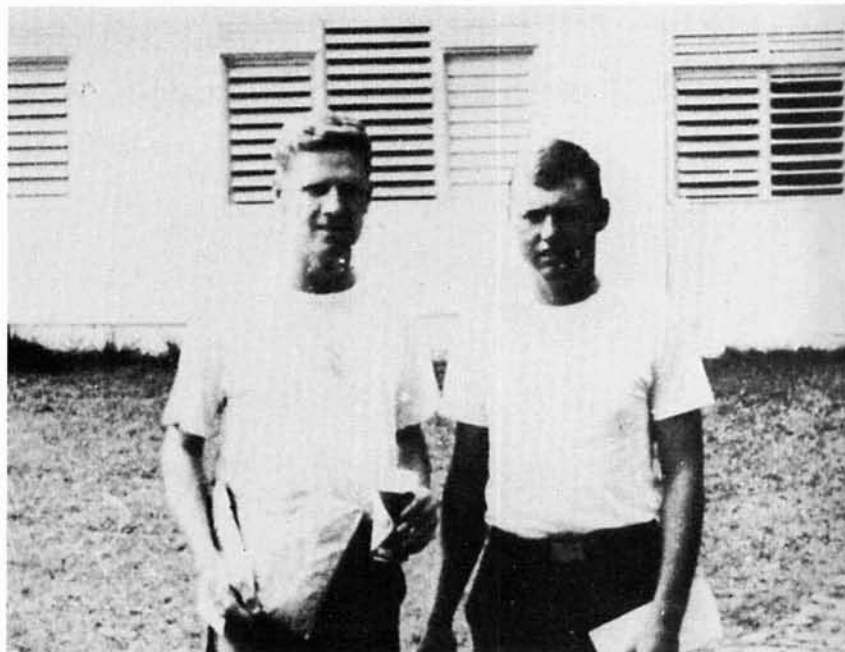


CROSS-RATE TRAINING



"HERE IT IS! NO. 1743A-0007635-Z590001.....  
TINKER TOYS!"

"NOT BAD. ONLY \$582,379.11 SHORT."



MAC & PAT



CONLEY AND DOC GIFFORD --  
THE SWEATER REMOVERS



DAVID AND ELLORAS --  
MOP CHOPPERS



WONG LEE DACK'S LAUNDRY --  
24 DAY SERVICE



SHERIFF'S OFFICE

"DEFINITE SYMPTOMS OF RICKETTSIA  
TSUTSUGAMUSHI" -- MEDICAL DEPARTMENT



CANNON COCKERS



THE PC'S RAN THE MAIL, THE DENTIST DRILLED TEETH,  
THE MAA'S KEPT THE PEACE, AND THE GM'S MAIN-  
TAINED THE WEAPONS.

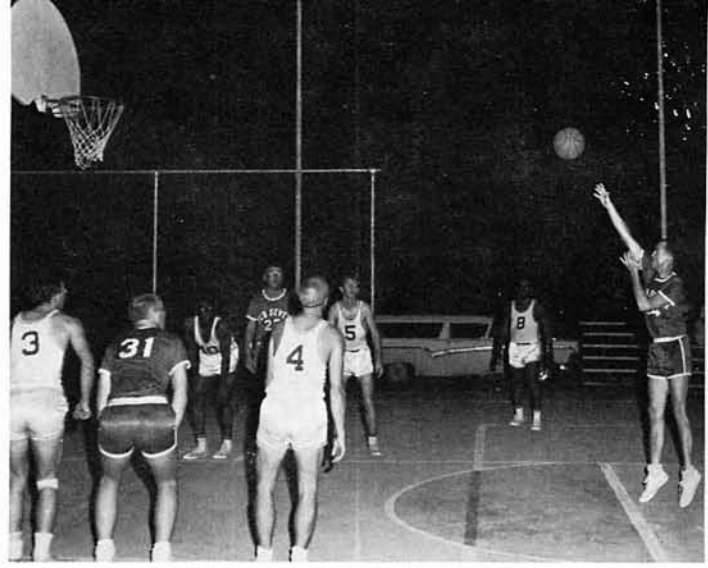
SUPPLY DEPARTMENT'S SK'S HAD THEIR HANDS FULL  
ORDERING AND RECEIVING A STEADY STREAM OF  
MATERIALS OF ALL KINDS. PERSONNEL-ADMIN OFFICE  
TOOK CARE OF THE TROOPS' RECORDS AND HANDLED  
THE BULK OF THE BATTALION'S PAPERWORK AND THE  
COOKS AND SD'S KEPT OUR BELLIES FULL. ALL IN  
ALL, H COMPANY DID A GOOD JOB KEEPING THE MEN  
HEALTHY, HAPPY AND COMFORTABLE.



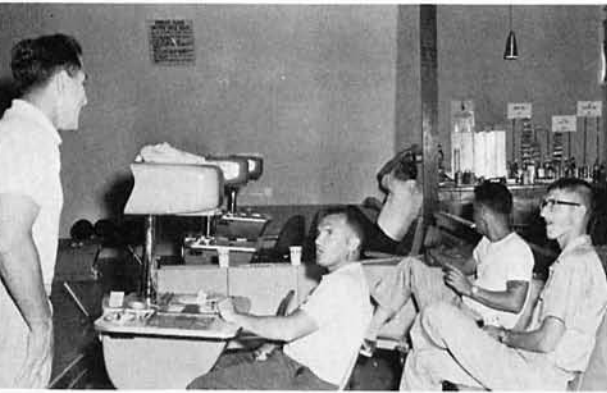


"GET THOSE REBOUNDS!"

# S P O R T S



"LOOKS GOOD, T!"



"YOU TELL 'EM DOC."



SURE STRIKE



"MAN, IS THIS EXCITING!"

NO HOLDS BARRED





TUMBLING TUMBLE-BEE



GOI GOI GOI



HUFFIN' AND PUFFIN'



JUMP BALL



HEAVE!

"GIMME A BREAK GIRLS! ONE AT A TIME!"



THERE'S NOTHING LIKE AN ACTIVE SPORTS PROGRAM TO ROUND OFF THE SOMETIMES SHARP CORNERS OF AN OPERATIONAL DEPLOYMENT -- AND WE HAD JUST THAT. WE PARTICIPATED IN THE NAVAL STATION BASKETBALL, VOLLEYBALL, GOLF, BOWLING, AND SLOW-PITCH SOFTBALL TOURNAMENTS AND DID WELL IN EACH. WE CONDUCTED A BATTALION OLYMPIC DAY, COMPANY VERSUS COMPANY, NOT NEARLY AS BIG AS THE 1960 ROMAN OLYMPICS BUT JUST AS MUCH FUN! WE ALSO ESTABLISHED OUR OWN INTRAMURAL BOWLING LEAGUE WHICH HAD AN EXTREMELY SUCCESSFUL FIVE-MONTH SCHEDULE. AND THEN, OF COURSE, PUERTO RICO OFFERED SOME EXCELLENT OPPORTUNITIES FOR INDIVIDUALS TO PARTICIPATE IN JUST ABOUT EVERY IMAGINABLE WARM-WEATHER SPORT. SPECIAL SERVICES BACKED UP ALL ACTIVITIES TO THE FULLEST EXTENT RESULTING IN A WELL-ROUNDED SPORTS PROGRAM.



EVERYTHING IS AVAILABLE AT LUQUILLO BEACH



"BIG MIKE" FINALLY GOES DOWN

# *R and R*



"CAN'T SLEEP IN THIS JEEP, BROWNIE, YOU'RE NOT COMMISSIONED."

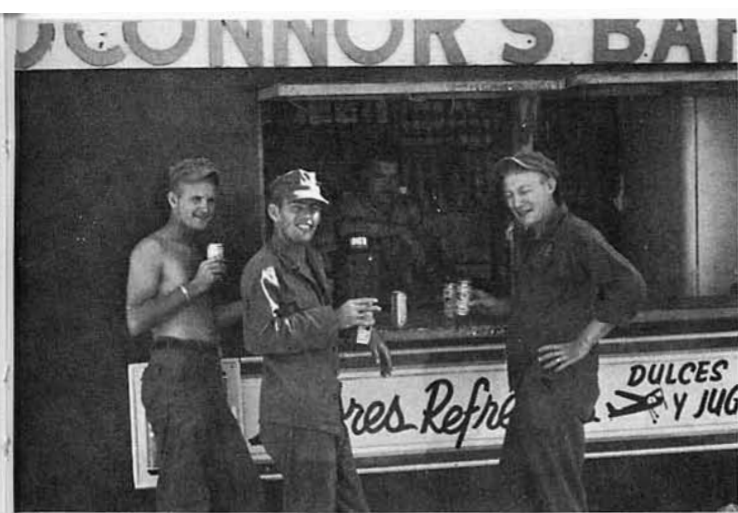


THAT'S TWO WAYS OF KEEPING COOL

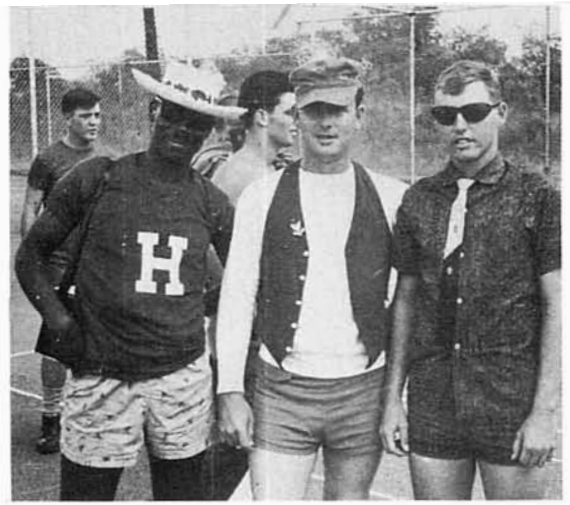
## PEOPLE-TO-PEOPLE PROGRAM



BEACH BUMS



POP'S



THREE STOOGES



COMBAT READY



CORONA KIDS



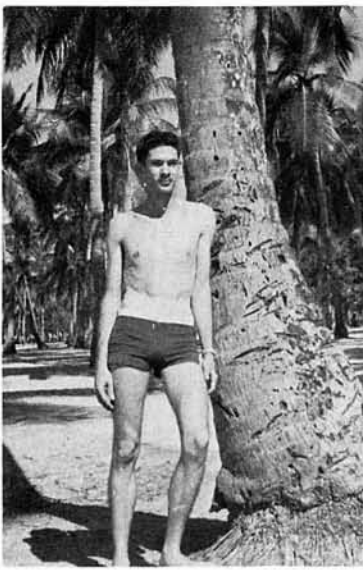
BATTALION PICNIC



WHAT A CUTE LITTLE ANIMAL!

"LOOK AT THE BUNCH OF HAMS!"





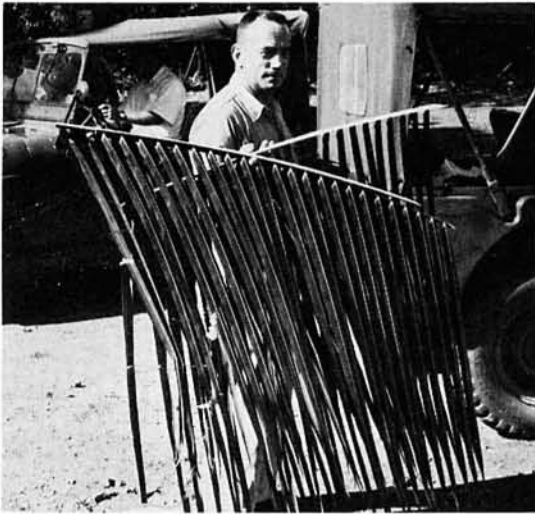
BEFORE ....



GEORGE SAYLOR -- SPECIAL SERVICES



BELIEVE IT OR NOT, IT'S ALIVE!



"GUNNEY" HAMPTON'S PORTABLE OUTHOUSE



"FROM NOW ON, MR. BAUER, I REFUSE TO WORK AFTER MIDNIGHT!"



♪...IF ONE OF THE BOTTLES SHOULD HAPPEN TO FALL, THERE'LL BE ...." ♪



"NOW LET'S TRY SOME OF THAT SEABEE CHOW I HEAR SO MUCH ABOUT."



SEABEE'S 22ND ANNIVERSARY BALL



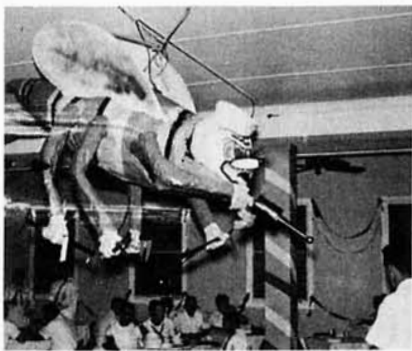
WONDER IF THEY EVER GET CONFUSED?



WALL FLOWERS



"SET 'EM UP, JOE!"

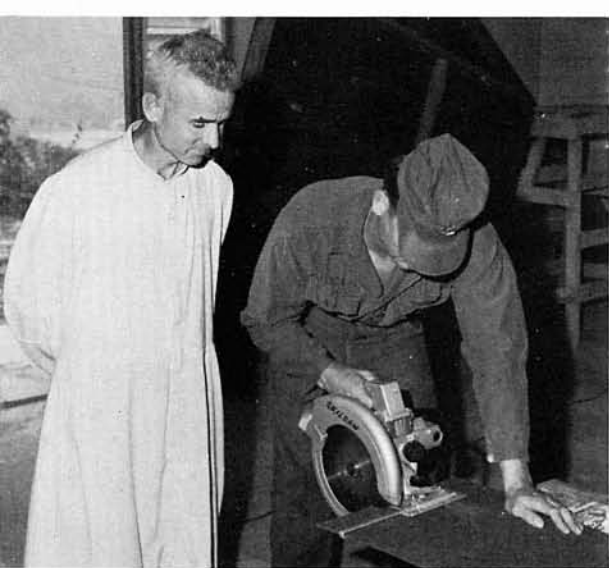


BZZZZzzzzzzzzzzzz

SEVEN'S OLDEST BEE -- CHIEF TORNOE--  
SLICES THE CAKE

"WASHA MADDA, BAILEY?"





PADRE MUGURUZA



REVEILLE! REVEILLE!



SAFETY SELL "SHIPS"



BEER SHOWER?



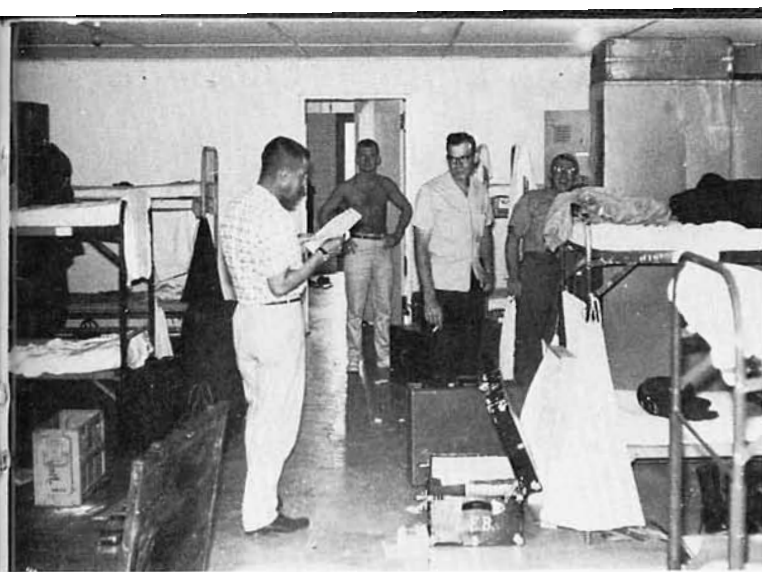
HAPPY NEW YEAR! -- CLUB EL GRINGO

"HECK OF A PLACE TO RUN OUT OF GAS -- NO CORONA STANDS FOR MILES!"



"MUSCLE-MOUTH" NESBITT





MCB SEVEN INST X12345 --  
HOW TO PACK YOUR FOOTLOCKER



FOUR DAYS ON THE LEAN-SWAY-TILT --  
THEN HOME . . . .



"THIS'LL GIVE YOU SOMETHING ELSE TO  
TALK ABOUT, HORNSBY."

"READY FOR YOUR CENTENNIAL, IKE?"



FOLLOWING THE ADMIN INSPECTION WE HAD LESS THAN A WEEK FOR THE FINAL STAGES OF PACK-UP, AND THE BATTALION BEGAN BUZZING WITH FERVOR CHARACTERISTIC OF HOME-BOUND SEABEES. MANY WORKED NIGHT AND DAY TO GET THE USS GRANT COUNTY (LST 1174) LOADED TO TAKE US HOME.

THEN, AFTER FIVE AND A HALF MONTHS OF TOIL UNDER THE HOT PUERTO RICAN SUN IT WAS TIME TO TURN OUR FACES TOWARD THE NORTH, LEAVING BEHIND US FINISHED PROJECTS, SWAYING PALMS, AND THAT MYRIAD OF AIRBORNE TERROR -- THE MIMIS.



# Stat 7-2

SEABEE TECHNICAL ASSISTANCE TEAM 7-2 DEPLOYED TO HOLY LOCH, SCOTLAND, ON 8 APRIL, 1964 TO UNDERTAKE A TRAINING MISSION WHICH ALLOWED THE TEN-MAN TEAM TO WORK ON ITS OWN AND BECOME FAMILIAR WITH STAT PACK-UP.

OUR MISSION WAS TO ERECT TWO PRE-FABRICATED RECREATION BUILDINGS, ONE TO BE USED AS A BOWLING ALLEY AND THE SECOND AS A MULTIPURPOSE BUILDING, BEGINNING THE PROJECT ON APRIL 22, WE ERECTED THE FRAMES, SIDES, ROOFS, AND ATTACHED GUTTERS TO THE OUTSIDES OF THE BUILDINGS, BATTLING HEAVY RAIN AND WINDS UP TO 65 KNOTS ALL THE WAY.

THEN WE WENT INSIDE AND FINISHED UP BY INSTALLING THE INTERIOR PARTITIONS AND CEILING. UNDER THE LEADERSHIP OF ENS GAMBLE, WE FINISHED THE TRAINING PROJECT IN SIX WEEKS, TWO WEEKS AHEAD OF SCHEDULE.



