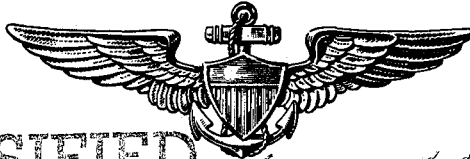


ALLOWANCES and LOCATION of NAVY AIRCRAFT

IMPORTANT

Commencing with this issue,
TABLES 1 and 2 Combined



DECLASSIFIED

*by authority of OP-51 on
4 April 1975 action by
Diane Snyder OP-51*

OPNAV NOTICE P03110

31 JANUARY 1964

DEPARTMENT OF THE NAVY
OFFICE OF THE CHIEF OF NAVAL OPERATIONS

UNCLASSIFIED ON 31 JANUARY 1969

DECLASSIFIED

DEPARTMENT OF THE NAVY
OFFICE OF THE CHIEF OF NAVAL OPERATIONS
WASHINGTON 25, D. C.

OPNAV PO3110
Op-502D
Ser 02508P50
13 February 1964

OPNAV NOTICE PO3110

From: Chief of Naval Operations
To: Distribution List

Subj: Allowance and Location of Navy Aircraft (U)

1. Purpose.

a. To indicate the following by units.

- (1) The operating aircraft allowance (Table 1).
- (2) The actual on hand aircraft inventories (Table 1) as of 31 January 1964.
- (3) The planned assignments of operating aircraft (Table 1).

b. To show the actual on hand program and non-program aircraft inventory in various forms (Section II), as of 31 January 1964.

2. General Instruction.

a. This Notice establishes unit operating allowance of the Naval Aircraft Program within each major operating command. The allocation of Naval aircraft by model is reflected in OPNAV INSTRUCTION 03110.1, "U. S. Naval Aircraft Program" (Gray Book), which establishes the allocations for major operating commands in accordance with the approved planning factors and available inventory. In those instances where apparent inconsistencies occur between operating allowances and allocations, the "U. S. Naval Aircraft Program" shall be the controlling instruction, since it represents the planned implementation of the aircraft program for which Congress approved and provided funds. Actual on hand aircraft inventories are developed by the Navy Aircraft Accounting System, OPNAV INSTRUCTION P5442.2A. The Naval Air Reserve Training Command as shown herein, has been established as a major command for aircraft logistics purposes only.

b. If the allowances as set forth are not deemed suitable for the mission which an activity or command has to support, the Chief of Naval Operations will consider recommendations for changes in types and allowances of aircraft. However, any requests for such changes that would result in an increase in a major command's total aircraft operating allowance should contain that command's recommendation for a compensatory reduction.

c. Major operating commands are authorized to shift operating assignments (Table 1) from one unit to another on a temporary basis; however, if it is expected that this shift will exceed three months, the Chief of Naval Operations shall be requested to change the authorized operating allowance (Table 1).

d. Specific assignment of aircraft to individual officers is prohibited by the Secretary of the Navy. Aircraft for shore based activities not listed in Table 1 are provided within the allowance of Naval Air Bases, the Naval Air Reserve Training Command, the Naval Air Training Command, and the Bureau of Naval Weapons (Research, Development, Test and Evaluation).

e. Designations of aircraft listed herein are in conformance with BUWEPS INSTRUCTION 13100.7 of 18 September 1962.

DECLASSIFIED

OPNAVNOTE PO3110

f. Planned operating levels of target drones (capable of carrying a pilot) are contained in OPNAV INSTRUCTION 03110.1 (U. S. Naval Aircraft Program).

3. Classification. The security classification of this publication is automatically downgraded from Confidential to Unclassified on 31 January 1968. This action is in accordance with Section 3, change 4 of OPNAV INSTRUCTION 5510.1B. Upon downgrading, this publication will be marked "FOR OFFICIAL USE ONLY".

4. Cancellation. This Notice is cancelled and may be destroyed by burning when the next issue is received. No report of destruction is necessary. For record purposes cancel 30 June 1964.


W. F. Bringle
By direction

Distribution:

Part I SNDL:

24A	(COMNAVAIRPAC (15)	50 B	(1)	(CINCSAC only)
	COMNAVAIRLANT (11)	50D	(2)	(COMNAVFORCONAD only)
W10A	(6) (NAVAVNSAFECEN)	C2	(1)	(NARASPO's only)
M9	(6) (ESO only)	E16	(2)	(NAVTRADEVCEEN)
M61	(10) (ASO only)	F2	(1)	(ND's 6, 9, 10, 12 only)
21	(3) (CINCLANTFLT (4))			
22	(3) (COMSECONDFLT, COMSEVENTHFLT only)	J84	(1)	(NAVPGSCOL)
	(2) (COMFIRSTFLT only)	J95	(2)	(NAVWARCOL)
23A	(1) (COMNAVPHIL only)	J113	(1)	(EPDOCONUS)
23B	(1) (COMTAIWANPATFOR, COMASWFORPAC, COMASWFORLANT (3) only)	M46	(2)	(NAVORDSUPO)
		W1A	(1)	(Glynco, Olathe only)
24F	(3) (SERVFORCOM)		(3)	(Alameda, only)
24J	(2) (FLTMARINEFORCECOM)		(4)	(Norfolk, North Island)
26CC	(1) (FLTDETS)		(5)	(Pax River only)
26F	(1) (COMNORVATEVDET, DEPOPTVFORPAC, COMOPTVFOR, (2) only)		(2)	(Less Alameda, Agana, Atlanta, Dallas, Glynco, Grosse Ile., Guantanamo Bay, Los Alamitos, Minneapolis, North Is., Olathe, Pax River, Pt. Mugu, So. Weymouth, Whidbey Is.)
26K	(1) (JOINT TASK GRU)	W1C	(1)	(NAF Litchfield Park only)
27C	(1) (SEA FRONTIER COMMANDS)	W1E	(1)	(MCAS)
27H	(1) (EPDOPAC only)	W1G	(1)	(Less Santa Ana)
28A	(1) (COMCARDIV's 1, 2, 3, 5, 17, 18, 19, 20 only)	W1H	(1)	(Roosevelt Roads, Rota Spain only)
42A	(4) (COMFAIRALAMEDA)	W2A	(2)	(NAB's 1, 5, 11, 12, 13, 14, Marianas only)
	(3) (COMFAIRWESTPAC)	W2B	(1)	(COMCABS EASTERN AREA only)
	(2) (Less COMFAIRALAMEDA, COMFAIRJAPAN, COMFAIRNORFOLK, COMFAIRQUONSET, COMFAIRWESTPAC)	W3A	(2)	(CNATRA)
42B	(1) (COMFAIRWINGONE, COMFAIRWINGTHREE, COMFAIRWINGSLANT (2))	W3B	(2)	(CNAVANTRA)
42EE	(1) (BARRIER COMMANDS)	W3C	(1)	(CNABATRA)
42H	(1) (UTILITY WINGS)	W3E	(4)	(CNARESTRA)
42Q	(1) (VR(F) THIRTY ONE only)	W3F	(1)	(CNATECHTRA)
46A	(2) (AIR COMMANDS)	W4A	(1)	(NAVAIRTECHTRACEN)
46B	(3) (AIRCRAFT WINGS)			
46C1	(1) (MAG's 12, 13, 15, 26, 32, 33 only)			
50A	(1) (CINCONAD, CINCPAC only)			

DECLASSIFIED

~~CONFIDENTIAL~~
OPNAVNOTE PO3110

W4B	(1)	(Jacksonville only)	W7Q	(1)	(NOL Corona only)
W6B	(1)	(BWR Akron, Burbank, Columbus, Long Beach, Teterboro only)	W7Z	(1)	(NAVMISCEN)
W7C	(1)	(NAVAIRTESTCEN)	W8A	(1)	(MISLAN)
W7E	(1)	(NAVAIRDEVCEN)	W9E	(1)	(NAVAVIONICFAC)
W7G	(1)	(NAVAIRTESTFACSHIPINSTAL)	W12H	(1)	(NAVAIRTECHSERVFAC)
			W11A	(2)	(Crane Ind. (Code 1000 only)
			W12A	(1)	(BWFRR)

Security Control Officer, Bureau of Res & Dev, FAA, Washington 25, D. C. (1)
 Bureau of Budget, Military Div., Executive Office, 17th & Penna., Washington
 D. C. (1)

Naval Aide to the President, The White House, Washington 25, D. C. (1)
 Office of the Executive Director, Operations Research Office, Johns Hopkins
 University, Washington 14, D. C. (1)

U. S. Army War College Library, Carlisle Barracks, Pennsylvania (1)

Commandant, Armed Forces Staff College, Norfolk 11, Va. (1)

Naval Air Engineering Center, Aeronautical Structures Lab., Philadelphia 12,
 Pa. (2)

Commandant, Air Ground Operations School, Keesler AFB, Miss. (1)

Naval Advisory Group, Air University, Maxwell AFB., Ala. (1)

U. S. Strike Command (Attn: Naval Officer, J-5), MacDill AFB, Tampa, Fla. (1)

Joint Alternate Command Element (Attn: Staff Logistics Officer), Ft. Ritchie,
 Md. (3)

Director, USAF Project RAND, 1700 Main St., Santa Monica, Calif. (1)

Overhaul and Repair Dept., U. S. Naval Air Station, Norfolk, Va. (1)

A5	(105)	(BUWEPS)	A3	(1)	(CNO (OP-05A5 only)
	(1)	(BUWEPS (Attn: PPAC-4)	F14	(3)	(NAVOCEANO)
	(8)	(BUPERS (Pers-11A)	F60	(1)	(NAVTAOCODEVPRODUCT)
	(1)	(BUSANDA)	W1C	(1)	(NAF Andrews only)
A2A	(2)	(NAVCOMPT, OPA, ONM (1) only)			

SecDef (Comptroller) Budget (2)

Record and Research Branch (J-3), The Joint Staff, Pentagon, Washington 25, D. C.
 (2)

Transportation Division, Operations Branch (J-4) The Joint Staff, Pentagon (1)

Director, Weapons System Evaluation Group, Pentagon, Washington 25, D. C. (1)

U. S. Naval Aviation Engineering Service Unit (Code 135), Philadelphia 12, Pa.
 (1)

Classified Material Office (Aviation Unit), Marine Barracks, Washington 3, D. C.
 (1)

General Accounting Office, Defense Accounting and Audit Division, Navy Audit
 Munitions Building, Washington 25, D. C. (1)

SecNav	(1)	Op-404E	(1)	Op-502D	(25)	Op-711	(1)
Op-100P2	(1)	Op-405	(1)	Op-503	(2)	Op-722	(1)
Op-03	(1)	Op-406	(2)	Op-505	(2)	Op-008	(1)
Op-03EG	(2)	Op-41	(1)	Op-506	(1)	Op-09	(1)
Op-305F	(1)	Op-05	(1)	Op-507	(3)	Op-09D	(1)
Op-32	(1)	Op-05F	(1)	Op-52	(4)	Op-90E	(1)
Op-33	(5)	Op-05R	(1)	Op-53	(4)	Op-92	(6)
Op-34	(2)	Op-05W	(1)	Op-561C	(3)	Op-93D	(1)
Op-345	(1)	Op-50	(1)	Op-06C	(1)	Op-941Z	(1)
Op-346	(1)	Op-50C	(1)	Op-601C	(1)	Op-94G63	(1)
Op-403	(1)	Op-501	(31)	Op-07T	(1)	Op-944	(1)
						CNO FLAGPLOT	(1)

~~CONFIDENTIAL~~

~~CONFIDENTIAL~~

DECLASSIFIED

TABLE OF CONTENTS

SECTION I

	<u>PAGE</u>
NAVAL AIRCRAFT CLASSES AND SUB-CLASSES	5
STATUS CODES	6
ABBREVIATIONS	7
TABLE 1 OPERATING ALLOWANCES	8
TABLE 2 PROGRAM OPERATING ALLOWANCES	37
TABLE 3 PROGRAM INVENTORY BY STATUS AND PLANNED OPERATING ASSIGNMENTS	40
TABLE 4 TOTAL PROGRAM AND NON-PROGRAM AIRCRAFT INVENTORY BY LOCATION AND ORGANIZATIONAL UNIT	59
AIRCRAFT MODELS	75

GENERAL

The Navy Program aircraft inventory is presented herein in three arrangements:

TABLE 1 is by type of reporting custodian within each command showing, for each unit and model of aircraft, location, authorized operating allowance, and actual inventory.

TABLE 3 is a summary of the actual operating inventory by major commands for each class, configuration and model in the program.

TABLE 4 is in alphabetic order of geographic location except that carriers and other ships are listed first showing for each location the "reporting custodians" or "unit" based there, the total aircraft in custody of each, and a code designation of their respective "command". The column headed Command contains their code designations, which are translated as follows:

- 11.....LANT.....Atlantic Fleet (Navy)
- 19.....LANT.....Atlantic Fleet (Marine Corps)

- 21.....PAC.....Pacific Fleet (Navy)
- 29.....PAC.....Pacific Fleet (Marine Corps)

- 31.....NABS.....Naval Air Bases (Navy)
- 39.....NABS.....Naval Air Bases (Marine Corps)

- 41.....NABTC.....Naval Air Basic Training Command
- 43.....NAATC.....Naval Air Advanced Training Command
- 44.....NATTC.....Naval Air Technical Training Command

- 50.....NART.....Naval Air Reserve Training Command

- 70.....RDT&E.....Research, Development, Test & Evaluation

- 88.....BUWEPS.....Fleet Readiness, BUWEPS

The above classifications are for logistic purposes and statistical convenience and in no way alter any organizational structure or military command established elsewhere by the Navy.

SECTION II

STATUS OF NAVY AIRCRAFT INVENTORY	62
---	----

~~CONFIDENTIAL~~

DECLASSIFIED

~~CONFIDENTIAL~~

NAVAL AIRCRAFT CLASSES AND SUB-CLASSES

<u>CLASS</u>	<u>SUB-CLASS</u>	<u>TITLE</u>	<u>MODELS</u>
VF	-FB	Fighter-Bomber	F-8C, F-8D, F-8E, F-8A, F-8B, F-11A, F-9J, AF-9J, F-9H, F-9F, F-4B, F-4A, F-3B, MF-3B, F-3C, F-2D, F-2C, F-1E, F-1C, MF-1C, F-6A, F-10B, MF-10B, F-10A, RF-8A, RF-9J, RF-4B
	-P	Photo Recon	
VA	-L	Light Attack	A-4E, A-4B, A-4C, A-4A, AF-1E
	-M	Medium Attack	A-6A
	-H	Heavy Attack	A-5C, A-5B, A-5A, A-3B, A-3A
	-P	Photo Recon (Long Range)	RA-5C, RA-3B, RA-3A
	-Q	ECM Recon (Long Range)	EA-3B, VA-3B, EA-3A
	-QM	Tactical ECM	EA-6A, EF-10B
	-LP	Light Attack (Prop)	A-1J, A-1H, A-1E, UA-1E, A-1G, A-2A
	-QMP	Tactical ECM (Prop)	EA-1F
VS		ASW (Carrier Based)	S-2E, S-2D, S-2C, RS-2C, S-2A, TS-2A, S-2B, S-2F
VP	-L	ASW Patrol (Shore Based)	P-3A, P-2H, LP-2J, SP-2H, P-2F, P-2G, MP-2F, TP-2F, EP-2E, P-2E, SP-2E, P-2D
	-S	ASW Patrol (Sea Based)	P-5B, SP-5B, P-5A, SP-5A, TP-5A
VW	-M	AEW Medium (Carrier Based)	E-1B, E-2A, EA-1E
	-H	AEW Heavy (Shore Based)	WC-121N, EC-121K, NC-121K, EC-121L, EC-121M, EC-121P
VR	-H	Heavy Transport	C-130F, C-130G, C-121J, C-118B, VC-118B, C-54S, C-54T, VC-54S, C-54R, NC-54R, C-54Q, VC-54Q, C-54PQ, C-54P, VC-54P, VC-54N, VC-54, LC-130F
	-M	Medium Transport	C-140C, C-119F, C-117D, LC-117D, VC-117D, C-47J, LC-47J, TC-47J, VC-47J, C-47HJ, C-47H, TC-47H, LC-47H, VC-47H, C-131G, C-131F
	-C	Carrier Transport	C-1A
VQ		Air Refueler, Heavy	KC-130F
VU	-L	Light Utility	U-11A, U-1B, U-6A, O-1C, O-1B, O-1A
	-G	Air-Sea Rescue (Sea)	HU-16D, HU-16E, HU-16B, SA-16B, HU-16C, LU-16C, TU-16C
	-M TOW	Medium Utility	US-2A, US-2C, UB-26J
VT	-AJ	Advanced Jet Trainer	TF-9J, TF-8A
	-BJ	Basic Jet Trainer	T-2B, T-2A, T-1A, T-33B
	-SJ	Special Jet Trainer	TA-3B, TF-10B, T-39D
	-AP	Advanced Prop Trainer	TC-45J, RC-45J, TU-8G, U-3
	-BP	Basic Prop Trainer	T-29B, T-28B, T-28C, T-28A
	-PP	Primary Prop Trainer	T-34B
	-SP	Special Prop Trainer	EC-1A, TC-117D, TC-47K, EC-47J, SC-47J, EC-47H, SC-47H, TC-4B
H	-S	ASW Helicopter	SH-3A, VH-3A, RH-3A, SH-34G, UH-34G, SH-34H, SH-34J, UH-34J
	-L	Light Utility Helicopter	HH-13Q, UH-1E, UH-13P, UH-13R, OH-43D, TH-43E, TH-3A, TH-13N, TH-13M, TH-13L
	-M	Medium-Assault Transport Helo	UH-34D, UH-34E, VH-34D, LH-34D, CH-34A, CH-34C, UH-19F, CH-53A, CH-46A, RA-46A, HH-19G, HH-34F
	-H	Heavy Assault Transport Helo	CH-37C
	-G	Air-Sea Rescue Helo	UH-43C, UH-2B, UH-2A, CH-19E, UH-25C, UH-25B
VK	-D	Drone Control	DF-8A, DF-8F, QF-8A, DF-9F, DF-9E, DF-1C, DF-6A, DF-1D, DT-33B, DT-33C, DP-2E, DB-26J, DT-28B
	-S	ASW Drone	QH-50C, QH-50B, QH-50A
	-K	Target Drone	QF-9F, QF-9G, QP-4B

~~CONFIDENTIAL~~

DECLASSIFIED

~~CONFIDENTIAL~~

STATUS CODES

Table one of this report includes a column headed "STATUS" which refers to aircraft status code classifications as defined in OPNAV INSTRUCTION NO. P5442.2A For full status code definitions, see reference.

The PROCESS Involved	AIRCRAFT STATUS CODES									
	IN the Process		AWAITING the Process (NOTE 1)				ENROUTE TO the Process			
OPERATING PROCESS includes the following categories: Operating, Standard Rework, Special Rework, Storage, Retirement and Strike, and Miscellaneous, together with all associated subdivisions). Primary Use: Combat A1 Combat Services A2 Student Pilot Training A3 Post-Student Training A4 Crew Training A5 Individual Proficiency A6 Weapon System Evaluation A7 Utility (Including Administrative) A8 Test Aircraft, Navy Operated A9 Test Support Aircraft, Navy Operated AK			IN BOWEPS In an Operating Command New Aircraft in Process of First Delivery		Other Aircraft Use EX if completely RFI If Not RFI use B letter to indicate Missing Material BA Airborne Eq. BB Armament BC Electronics BD Photo BE Power Plant		Use EX if completely RFI If Not RFI use B letter to indicate Missing Material BN Airborne Eq. BP Armament BQ Electronics BR Photo BS Power Plant		By Flight	By Surface Transport
STANDARD REWORK Overhaul D1 Progressive Maintenance-Conversion D2 Progressive Maintenance D3 Overhaul-Conversion D4 Progressive Aircraft Rework D5 Airline Maintenance D6 Progressive Aircraft Rework-Conversion D7 Aircraft with Class B Damage	In a Rework Process Rework Process Completed - Awaiting Flight Check	To be reworked where now located Flyable Non-Flyable		To be transferred elsewhere for rework Flyable Non-Flyable						
SPECIAL REWORK Conversion G4 Modification G5 Repair G6 Modernization G7 Modernization-Conversion G8			To be reworked where now located Flyable Non-Flyable		To be transferred elsewhere for rework Flyable Non-Flyable					
STORAGE (NOTE 2) Standard Rework Required: Undamaged Aircraft MW Aircraft with Class B Damage MX Aircraft with Class C or D Damage MY Standard Rework Not Required: Undamaged Aircraft NZ Aircraft with Class C or D Damage NN	In Containers Not In Containers	Flyable Non-Flyable		Non-Flyable						
RETIREMENT AND STRIKE Category 1 Damage Category 2 Depreciation Category 3 Administrative Category 4 Completed Service Life	Awaiting Decision to Strike		Awaiting Strike				Stricken			
MISCELLANEOUS Bailment (NOTE 3) Test Aircraft TJ Test Support Aircraft TK Contract Pending TR Loan (NOTE 3) By the Navy Not ED/BE U Test Aircraft UJ Test Support Aircraft UK To the Navy Not ED/BE U5 Test Aircraft U6 Test Support Aircraft U7 Provisionally Accepted V letter (NOTE 4) Grounded, Structural X Disposition Undetermined Awaiting Enroute Y Contingency Reserve: (NOTE 5) Stored In containers WA Not in Containers WB Not Stored Flyable WD Non-Flyable WE	NOTES: 1. A "B"- status, when used by an Operating Command, means the aircraft could be changed to an operating status (AW) without undergoing Standard or Special Rework; when used by BOWEPS, it means an aircraft is either Ready For Issue (EX or EY) or Ready For Issue except for certain missing material (BA...BS). 2. Does not include stored aircraft which have completed Standard Service Life. See NOTE 5. 3. CNO approval is prerequisite before change to a Bailment or Loan status. 4. The "W" will be followed by a letter when the aircraft lacks CER. Use VH, VP, VQ, VR or VS to indicate Missing Airborne Equipment, Armament, Electronics, Photo Equipment or Power Plant, respectively. 5. Aircraft which have completed Service Life. See GLOSSARY (Part VI of this instruction) for explanation of all terminology used above.									

~~CONFIDENTIAL~~

DECLASSIFIED

~~CONFIDENTIAL~~

LOCATION OF NAVY AIRCRAFT
ABBREVIATIONS USED IN THIS REPORT
(Excluding "Status" Codes)

ABD - Aboard (name of ship follows)
ACFT - Aircraft
ADV - Advisory or Advance
AES - Aircraft Engineering Squadron
AEWBARRON - Airborne Early Warning Barrier Squadron
AEWTRAUNIT - Airborne Early Warning Training Unit
AFB - Air Force Base
AFMF - Aircraft, Fleet Marine Force
AGRI - Agriculture, Department of
ASW - Anti-Submarine Warfare
ATT - Naval Attache
AV - Seaplane Tender

BARR - Barrier
BIS - Board of Inspection and Survey
BUWEPS - Bureau of Naval Weapons
BWFLTRREP - Bureau of Naval Weapons Fleet Readiness Representative
BWGR - Bureau of Naval Weapons General Representative
BWMR - Bureau of Naval Weapons Maintenance Representative
BWR - Bureau of Naval Weapons Representative
BWRR - Bureau of Naval Weapons Resident Representative

CEN - Central
CMEF - Commander of Middle East Forces
COM - Commander
COMNAVFOR - Commander Naval Force
COMUSTDC - Commander U. S. Taiwan Defense Command
CONAD - Continental Air Defense
CV - Carrier
CVA - Attack Carrier
CVW - Attack Carrier Air Wing
CVS - Anti-Submarine Warfare Support Aircraft Carrier
CVSG - Anti-Submarine Warfare Carrier Air Group

DET - Detachment
DST - District

ECM - Electronic Counter Measure

FAA - Federal Aviation Agency
FAC - Facility
FAHS - Fleet Aircraft Headquarters Squadron
FAWPRA - Fleet Air West Pac Repair Activity
FLT - Fleet
FMF - Fleet Marine Force
FR - Fleet Readiness, BuWeaps

HHS, H&HS - Headquarters and Headquarters Squadron
H&MS - Headquarters and Maintenance Squadron
HDQTRS, HQ - Headquarters
HMR - Marine Helicopter Transport Squadron
HMRL - Marine Helicopter Transport Squadron (Light)
HMRM - Marine Helicopter Transport Squadron (Medium)
HMXX - Marine Helicopter Operational Development Squadron
HQ, HDQTRS - Headquarters
HS - Helicopter Anti-Submarine Squadron
HT - Helicopter Training Squadron
HU - Helicopter Utility Squadron

INSMAT, INM - Inspector of Naval Material
INT - Interior, Department of

JUSMAG - Joint U. S. Military Advisory Group

LANT - Naval Air Force, Atlantic Fleet
LPH - Assault Amphibious Ship

MAAG - Military Assistance Advisory Group
MARS - Marine Aircraft Repair Squadron
MC - Marine Corps
MCAAS - Marine Corps Auxiliary Air Station
MCAF - Marine Corps Air Facility
MCAS - Marine Corps Air Station
MINDEFDEVU - Mine Defense Development Unit
MWSG - Marine Wing Service Group

NAAS - Naval Auxiliary Air Station
NAATC - Naval Air Advanced Training Command
NABS - Naval Air Bases
NABTC - Naval Air Basic Training Command
NADC - Naval Air Development Center
NADU - Naval Air Development Unit

NAF - Naval Air Facility
NAMC - Naval Air Material Center
NAMD - Naval Air Maintenance Department
NART - Naval Air Reserve Training
NARTU - Naval Air Reserve Training Unit
NAS - Naval Air Station
NASA - National Aeronautics and Space Administration
NASWP - Naval Air Special Weapons Facility
NATECHTRAU - Naval Air Technical Training Unit
NATRA - Naval Air Training
NATSF - Naval Air Technical Services Facility
NATTC - Naval Air Technical Training Command
NATU - Naval Air Torpedo Unit
NAV - Naval
NAVCOFFSCOL - Naval Combat Information Center Officers' School
NAVCRUIT - Navy Recruiting
NAVSECMAGG - Navy Section Military Assistance Advisory Group
NAVSTA - Naval Station
ND - Naval District
NMF - Naval Missile Facility
NEF - Naval Parachute Facility
NTDC - Naval Training Device Center
NWEF - Naval Weapons Evaluation Facility
NWL - Naval Weapons Laboratory

OH - Overhaul
ONR - Office of Naval Research
OPTEVFOR - Operational Test and Evaluation Force
OPEL - Operational
O & R - Overhaul and Repair, BUWEPS FR

PAC - Naval Air Force, Pacific Fleet
PMRFAC - Pacific Missile Range Facility
PRNC - Potomac River Naval Command

RCVW - Replacement Attack Carrier Air Wing
RCVSG - Replacement Anti-Submarine Warfare Carrier Air Group
RDT&E - Research, Development, Test and Evaluation, BUWEPS
RFI - Ready For Issue
RNG - Range

SO&ES - Station Operations and Engineering Squadron
SQDN - Squadron
SRNC - Severn River Naval Command
SUPP - Support

TAC - Tactical
TRARON - Training Squadron

USMC - United States Marine Corps
USN - United States Navy
USNMC - United States Naval Missile Center
USNR - United States Naval Reserve

VA - Attack Squadron
VAH - Heavy Attack Squadron
VAP - Photographic Squadron
VAW - Carrier Special Squadron, Air Early Warning
VFAW - Interceptor Squadron
VMA - Marine Attack Squadron
VMCJ - Marine Composite Photographic Squadron
VMF - Marine Fighter Squadron
VMGR - Marine In Flight Refueling Squadron
VMJ - Marine Photographic Squadron
VMO - Marine Observation Squadron
VMR - Marine Transport Squadron
VM - Marine Corps Fleet Training Squadron
VP - Patrol Squadron
VQ - Electronic Counter Measure Squadron
VR - Transport Squadron - Fleet Tactical Support Squadron
VRC - Fleet Tactical Support Squadron, Carrier
VS - Anti-Submarine Squadron
VU - Utility Squadron
VW - Air Early Warning Squadron
VX - Air Operational Development Squadron

NOTE: For information as to abbreviations used to designate class, subclass and version of aircraft, see page 66.

~~CONFIDENTIAL~~

CONFIDENTIAL

OPERATING ALLOWANCES INVENTORY AND PLANNED OPERATING ASSIGNMENTS

TABLE 1

TOTAL PROGRAM AND NON-PROGRAM AIRCRAFT

DECLASSIFIED

LANT UNIT	LOCATION	CLASS AND MODEL	P R I M A R Y S	A L L O W A N C E	INVENTORY			PLANNED OPERATING ASSIGNMENTS				LANT UNIT	LOCATION	CLASS AND MODEL	P R I M A R Y S	A L L O W A N C E	INVENTORY			PLANNED OPERATING ASSIGNMENTS								
					S T A T U S	P A R T I C I P A N T L I N E	O P T I C A L P I P E L I N E	O P T I C A L P I P E L I N E	31 MAR 64	30 JUN 64	30 SEP 64						31 DEC 64	S T A T U S	P A R T I C I P A N T L I N E	O P T I C A L P I P E L I N E	31 MAR 64	30 JUN 64	30 SEP 64	31 DEC 64				
MARINE AIR FME * FORCE AVIATION HQQR SQDN																												
HS FNLNT	NORFOLK	VR H	A2	1									ATT OSLO	NORWAY	VU G HU 160	AB	1	AB	1									
		VR M	A2	1									ATT PRETORIA	SO AFRICA	VR M	AB	1	AB	1									
		C 131F			A2	1									C 47J			AB	1									
		VT BJ	A6	2	A6													AB	1									
		T 1A			B6	1	2						ATT TEHRAN	IRAN	VR M	C 47J	AB	1	A2									
		T 1A			B6	1	2											AB	1									
		VT AP	A6	2														AB	1									
		TC 45J			A6		2											AB	1									
						1*	5*											AB	1									
MARINE FLEET TRAINING SQDN																												
VMT 1	CHERRY POINT	VF AJ	A4	20									MISSION BOGOTA	COLOMBIA	VR M	AB	1	AB	1									
		TF 9J			A4	20												HU 160										
		TF 9J			B4	1							MISSION CARACA	VENZUELA	VR M	C 47J	AB	1	AB	1								
		TF 9J			D5	2	20*											AB	1									
						3*							MISSION LIMA	PERU	VR M	C 47J	AB	1	AB	1								
MARINE CORPS AIR STATIONS																												
MCAS	CHERRY POINT	F 4A			E5	2							MISSION QUITO	ECUADOR	VR M	C 47H	AB	1	AB	1								
						2*												AB	1									
INDIRECT FLEET SUPPORT UNITS																												
NAVAL ATTACHES AND MISSIONS LANT																												
ATT ATHENS	GREECE	VU G HU 160	AB	1									MISSION RIO DJ	BRAZIL	VR M	TC 47J	AB	1	AB	1								
																		AB	1									
ATT CAIRO	EGYPT	VR M C 47J	AB	1									MISSION VLRSDO	CHILE	VR M	C 47H	AB	1	AB	1								
																		AB	1									
ATT MEXICO CTY	MEXICO	VR M C 47J	AB	1									SENNAVAOV	ARG BUENOS AIRES	VR M	C 47J	AB	1	AB	1								
																		AB	1									
ATT MUNKOVIA	LIBERIA	VR M C 47H	AB	1									TOTAL															
ATT NEW DELHI	INDIA	VR M C 47J	AB	1									PROGRAM															
													NON-PROGRAM #															

* See Glossary. Operating includes aircraft reported in "A" number status. PAR and Operational Pipeline includes aircraft reported in other than "A" status.

CONFIDENTIAL

OPERATING ALLOWANCES

INVENTORY AND PLANNED OPERATING ASSIGNMENTS

DECLASSIFIED

TABLE 1

TOTAL PROGRAM AND NON-PROGRAM AIRCRAFT

BUWEPS FR UNIT	LOCATION	CLASS AND MODEL	P R I M A R Y	A L L O W A N C E	INVENTORY		BUWEPS FR UNIT	LOCATION	CLASS AND MODEL	P R I M A R Y	A L L O W A N C E	INVENTORY	
					S T A T U S	N U M B E R O N B O A R D						S T A T U S	N U M B E R O N B O A R D
BUWEPS FLEET READINESS OVERHAUL * REPAIR ACTIVITIES													
0+R BUWEPS FR	ALAMEDA	F 4B F 1C A 4B A 3B A 3A A 1H A 1H A 1E A 1E A 1E SP 2E C 47J G 1B HU 16C TC 45J UH 34D UH 2B DF 1D			BX 2 RG 6 BY 1 EA 1 NK 1 EJ 2 R 3 RS 1 DS 8 ES 10 EA 1 EJ 1 Y 1 BY 1 Y 1 BY 6 BX 2 Z 2		0+R BUWEPS FR	LAKE CITY	C 54S C 54T C 54R C 54R C 54Q C 54Q C 54P			D3 1 D3 1 D1 1 D3 2 D1 3 D3 2 D1 3	
0+R BUWEPS FR	CHERRY POINT	F 11A F 4B F 4B F 4B F 4A F 3B A 4E C 117P O 1C O 1C O 1C O 1C O 1C O 1B O 1B CH 37C			NK 2 DI 1 EH 1 EY 1 Y 1 NK 2 FH 1 D3 1 O1 1 E1 1 NK 1 YH 2 EA 2 E1 1 EY 1	55*	0+R BUWEPS FR	NORFOLK	F 8C F 8C F 8C F 8D F 8D F 8E F 8A F 8A F 8B F 8B F 9J AF 9J F 9H RF 8A RF 8A RF 8A S 2A S 2F SP 2H P 2E P 2E E 1B SH 34G SH 34G UH 25B NTF 9J QF 9G QF 9G QF 9G QF 9G QF 9G QF 9G QF 9G			MX 1 NK 1 H6 1 MX 1 NC 1 D1 1 MX 1 PC 1 MX 2 PC 17 MW 16 MW 1 MX 1 NC 1 NK 1 R 2 ER 1 BY 1 GS 1 H5 1 EY 1 MX 1 NW 1 P4 3 E5 1 BY 1 CK 4 C8 1 D4 8 GT 7 HT 3 MZ 9	13*
0+R BUWEPS FR	JACKSONVILLE	F 8E AF 1E A 5A A 3B A 3B E 1B SH 34C UH 34G UH 34G UH 34G UH 34G SH 34J SH 34J UH 34J UH 13P UH 13P UH 13P UH 13P UH 13P UH 45D TH 13N TH 13N TH 13N TH 13N TH 13N TH 13N UH 34D UH 34D UH 34D UH 34E UH 34D UH 19E CH 37C CH 37C CH 37C UH 43C UH 2A CH 19E CH 19E			EK 1 ER 1 D1 1 D1 1 NK 1 ER 1 D1 1 BY 1 DA 1 D1 6 E1 1 NK 1 BY 2 D1 4 NK 31 NK 1 C1 1 D1 1 NK 1 NK 2 NK 4 BY 1 D1 1 E1 1 NK 3 D1 3 NK 3 NK 2 BY 1 DA 3 D1 4 E1 5 NK 2 VK 6 NK 1 BY 2 NK 1 C1 1 DA 1 D1 2 E1 1 VK 1 NK 1 D1 2 NK 2 NK 5	119*	0+R BUWEPS FR	PENSACOLA	S 2A S 2A S 2A S 2A TS 2A S 2B S 2F C 1A HU 16D HU 16C HU 16C US 2C T 2A T 33B T 33B TC 45J TC 45J TC 45J RC 45J T 28B T 28B T 28B T 28B T 28C T 28C T 28C T 34B T 34B T 34B T 34B TH 13M DF 33B DF 33B DT 28B			R 6 RD 6 RE 1 AD 1 E5 1 H7 1 E5 2 D1 1 MX 2 D1 2 E1 2 DT 4 D1 1 D1 7 E1 2 BY 2 D1 15 E1 14 NK 9 NK 2 BY 6 C6 2 D1 30 E1 25 MX 13 BY 3 D1 5 EA 1 E1 7 NK 89 NK 8 NK 5 OX 1 BY 1 DF 1 D1 1 D1 1	318*

~~CONFIDENTIAL~~

OPERATING ALLOWANCES INVENTORY AND PLANNED OPERATING ASSIGNMENTS

DECLASSIFIED

TABLE 1

TOTAL PROGRAM AND NON-PROGRAM AIRCRAFT

BUWEPS FR UNIT	LOCATION	CLASS AND MODEL	P R I M A R Y	A L L O W A N C E	INVENTORY		BUWEPS FR UNIT	LOCATION	CLASS AND MODEL	P R I M A R Y	A L L O W A N C E	INVENTORY					
					S T A T U S	N U M B E R O N B O A R D						S T A T U S	N U M B E R O N B O A R D				
D+R BUWEPS FR QUONSET PNT		F 8C		ER	1		BUREAU OF NAVAL WEAPONS REPRESENTATIVES										
		F 4B		ER	1												
		A 4E		SY	1				BWR FR	BALTIMORE							
		A 4B		O1	1						SP 5B		BY	2			
		A 4B		EA	1						SP 5B		O1	25			
		A 4B		E1	1						SP 5B		E1	5			
		A 4C		NK	3						P 5A		O1	1			
		A 4C		D1	2										33*		
		A 4C		E5	1					BWR FR	BETHPAGE						
		A 4C		NK	10							A 5A		G5	5		
		A 6A		D1	1							A 6A		V	2		
		A 1J		O1	1							S 2E		G5	1		
		A 1J		DA	2							S 2E		V	5		
		A 1J		D1	3							E 2A		G5	1		
		A 1H		E1	1							E 2A		V	5		
		A 1H		C1	1							TH 13V		TK	1		
		A 1H		DA	3							QH 50C		V	2		
		A 1H		D1	2A											22*	
		A 1H		E1	8												
		A 1H		R	3												
		A 1E		DA	1						BWR FR	BLOOMFIELD					
		A 1E		DA	5							UH 2B		BX	10		
		A 1E		O1	16							UH 2A		BY	1		
		A 1E		E1	11							UH 2A		G5	15		
		A 1E		NK	1							UH 2A		HE	3		
		A 1E		O1	2											29*	
		A 1G		C1	1						BWR FR	BURBANK					
		EA 1F		D1	2							P 2E		BY	1		
		EA 1F		EY	2												1*
		S 2D		DA	1						BWR FR	COLUMBUS					
		EA 1E		D1	1							A 5A		DE	1		
					113*							A 5A		D5	3		
												A 5A		NM	2		
		D+R BUWEPS FR NORTH ISLAND		F 8C		BY			1			A 5A		TJ	1		
				F 8D		D1			1			RA 5C		G7	3		10*
				F 8E		O1			1		BWR FR	DALLAS					
				F 8E		G6			1			F 8E		BX	3		
				F 8E		G7			1			C 117D		BY	5		
				F 8A		G6			1			C 117D		D1	11		
				F 8A		NK			1			C 47J		BY	1		
				F 9A		BN			2			C 47J		D1	5		
				F 4B		D5			1			C 47H		O1	1		
				F 4B		G6			1							26*	
				F 3B		NK			2								
		F 3B		NW	2		BWR FR	DOTHAN									
		F 6A		NM	1			C 118B		D3	4						
		F 6A		NV	6			C 54Q		O1	1						
		EF 10B		BY	1			C 54Q		D3	8						
		EF 10B		C1	1			C 54P		O3	3						
		LF 10B		D1	1			C 131F		O3	3						
		EF 10B		NM	1							19*					
		A 1H		4B	1		BWR FR	LONG BEACH									
		P 5B		NV	1			A 4E		BX	5						
		P 5B		NZ	1			A 4E		C1	1						
		SP 5B		NV	2			A 4E		V	7						
		P 5A		NV	2							13*					
		SP 5A		NV	3		BWR FR	LOS ANGELES									
		SP 5A		NZ	3			T 59D		BY	1						
		US 2C		BY	2								1*				
		US 2C		DF	3		BWR FR	MARIETTA									
		UB 26J		WB	1			C 130G		BX	3						
		T 53B		EJ	1								3*				
		TF 10B		D1	1		BWR FR	HORTON									
		TF 10B		F1	1			CH 46A		V	4						
		TF 10B		NW	2			CH 46A		VU	3						
		TF 10E		WX	1			UH 25B		V	1						
		SH 3A		D1	1							8*					
		SH 34G		NK	8		BWR FR	ST LOUIS									
		SH 34G		NY	1			F 4B		BB	1						
		UH 34G		EJ	2			F 4B		C1	1						
		UH 34G		WB	1			F 4A		TJ	1						
		SH 34J		C1	1			F 4A		TK	3						
		SH 34J		C4	1			T 1A		TK	1						
		SH 34J		D1	4							7*					
		SH 34J		NW	1		BWR FR	STRATFORD									
		SH 34J		WX	11			SH 3A		G7	2						
		UH 34D		BY	1			SH 3A		HG	1						
		UH 34D		CB	1			SH 3A		V	3						
		UH 34D		D1	11			SH 3A		V	1						
		UH 43C		NY	2			SH 3A		V	4						
		CH 10E		NX	7			UH 34D		V	11*						
		UH 25B		Y	1		BWR FR	MALTHAM									
		DF 9E		NY	1			F 10A		UK	1						
					108*							1*					

~~CONFIDENTIAL~~

~~CONFIDENTIAL~~

OPERATING ALLOWANCES

INVENTORY AND PLANNED OPERATING ASSIGNMENTS

TABLE 1

TOTAL PROGRAM AND NON-PROGRAM AIRCRAFT

DECLASSIFIED

BUWEPS FR UNIT	LOCATION	CLASS AND MODEL	P R S T I M A T R U S	A L L O W A N C E	INVENTORY		BUWEPS FR UNIT	LOCATION	CLASS AND MODEL	P R S T I M A T R U S	A L L O W A N C E	INVENTORY		
					S T A T U S	N U M B E R O N B O A R D						S T A T U S	N U M B E R O N B O A R D	
<u>MISCELLANEOUS BUWEPS ACTIVITIES</u>														
BUWEPS FR	WILLOW GROVE	S 2A		EY	1	1*	FLYING CLUB	MEMPHIS	T 348			U	1	1*
<u>ACFT ON LOAN BUWEPS FR</u>														
ARTIC RES LAB		SC 47H		U	2	2*	NAV FLY CLUB	MONTEREY	T 348			U	2	2*
CEN AIRLINE INC		TC 47J TC 47H		U	1	1	FLYING CLUB	NAPLES	T 348			U	2	2*
				U	1	2*	FLYING CLUB	NEW ORLEANS	T 348			U	1	1*
DEPT OF AGRI		S 2A TC 45J T 288 SC 47J		J	1	1	FLYING CLUB	NORFOLK	T 348			U	1	1*
				U	1	1	NVHOSPFLYCLUB	OAKLAND	T 348			U	1	1*
				U	1	4*	FLYING CLUB	PENSACOLA	T 348			U	2	2*
DEPT OF INT		EC 47J		U	1	1*	FLYING CLUB	POINT MUGU	T 348			U	1	1*
DEPT OF JUSTICE		C 47H		U	2	2*	FLYING CLUB	PORT LYAUTEY	T 348			U	2	2*
FED AVN AGENCY		TC 47J VC 47J C 47H TC 47H VC 47H TF 4J EC 47J SC 47J EC 47H		U	15	4	FLYING CLUB	ROTA	T 348			U	2	2*
				U	1	1	FLYING CLUB	SAN JUAN	T 348			U	1	1*
				U	2	2*	NAF AERO CLUB	SIGONELLA	T 348			U	1	1*
FLYING CLUB ARGENTIA		T 348		U	2	2*	FLYING CLUB	SO WEYMOUTH	T 348			U	1	1*
FLYING CLUB CRPS CHRISTI		T 348		U	2	2*	FLYING CLUB	WHITING FLD	T 348			U	2	2*
FLYING CLUB CUBI PNT		T 348		U	2	2*	NASA	LANGLEY FLD	T 1A			U	1	1*
FLYING CLUB DALLAS		T 348		U	1	1*	TRANS CO TEXAS		TC 47J C 47H TC 47H			TK	2	1
BUWEPS FLYCLUB HYDE FLD		T 348		U	1	1*						TK	1	4*
BUWEPS FLYCLUB GLYNCO		T 348		U	1	1*	U S ARMY		EC 121K TC 45J EC 47J SC 47J EC 47H SC 47H VH 3A UH 2A			U	1	1
FLYING CLUB GROSSE ILE		T 348		U	1	1*						U	4	1
FLYING CLUB IWAKUNI		T 348		U	1	1*						U	1	1
FLYING CLUB JACKSONVILLE		T 348		U	2	2*						U	1	1
FLYING CLUB JOHNSVILLE		T 348		U	1	1*	USAF		A 1E T 288 UH 13R			U	2	3
FLYING CLUB KIRTLAND AFB		T 348		U	2	2*						U	2	7*
FLYING CLUB KODIAK		T 348		U	1	1*	U S CG		TH 13N			U	2	2*
FLYING CLUB LAKEHURST		T 348		U	1	1*	WEATHER BUREAU		F 11A			U	1	1*
FLYING CLUB LOS ALAMITOS		T 348		U	2	2*								

~~CONFIDENTIAL~~

**OPERATING ALLOWANCES
INVENTORY AND PLANNED OPERATING ASSIGNMENTS**

DECLASSIFIED

TABLE 1

TOTAL PROGRAM AND NON-PROGRAM AIRCRAFT

BUWEPS FR UNIT	LOCATION	CLASS AND MODEL	P R I M A T R Y S	A L L O W A N C E	INVENTORY		BUWEPS FR UNIT	LOCATION	CLASS AND MODEL	P R I M A T R Y S	A L L O W A N C E	INVENTORY			
					S T A T U S	N U M B E R O N B O A R D						S T A T U S	N U M B E R O N B O A R D		
STORAGE FACILITIES													LP 2J	MX	1
STORAGE FACILITY LITCHFIELD PRK													LP 2J	MY	1
F 8A				CL	1							P 2F	MX	10	
F 8A				MX	45							P 2G	MX	1	
F 8A				P4	1							TP 2F	MX	5	
F 11A				MX	35							TP 2F	MY	1	
F 11A				MY	5							2E	MX	1	
F 9J				MX	2							SP 2E	MY	7	
F 9J				P5	12							EA 1E	F1	2	
F 9J				MY	100							EA 1E	MX	3	
F 9J				P4	23							EA 1E	P4	1	
F 9J				MB	2							EC 121K	MX	17	
AF 9J				MX	112							C 54P	F3	1	
AF 9J				MY	49							C 119F	MX	36	
AF 9J				MB	16							C 117D	MX	4	
F 3F				P3	118							C 47J	MX	5	
F 3B				MX	114							TC 47J	MX	5	
F 3B				MY	6							VC 47J	MX	2	
F 3B				P4	5							C 47H	MX	8	
F 3C				MX	1							TC 47H	MX	10	
F 1E				MX	3							O 1B	MX	7	
F 1E				MY	1							HU 16C	MX	10	
F 1E				P4	8							HU 16C	P4	5	
F 1E				MB	6							TU 16C	MX	3	
F 6A				MX	120							TU 16C	P4	1	
F 6A				MY	5							TF 9J	MX	33	
F 6A				P4	2							TF 9J	MY	2	
F 1C				MX	1							T 1A	MX	13	
F 1C				MY	1							T 1A	MY	1	
F 1C				MB	4							T 33B	MX	71	
F 6A				MX	24							T 33B	MY	7	
A 4B				MY	10							T 33B	P4	11	
A 4B				P4	13							TF 10B	MX	12	
A 4C				GO	1							TC 45J	MX	58	
A 4A				MX	57							MC 45J	MX	7	
A 4A				MY	2							T 343	MX	22	
A 4A				P4	10							TC 47K	MY	1	
A 4A				MB	16							TC 47K	P4	2	
AF 1E				MX	14							TC 47K	MX	1	
AF 1E				MY	1							EC 47J	MX	1	
AF 1E				P4	2							UH 54G	MX	12	
A 3A				MX	7							UH 54J	MX	1	
KA 3B				MY	3							UH 15P	P4	1	
A 1J				MX	5							DH 43D	MX	1	
A 1H				F1	1							UH 19F	P4	2	
A 1H				MX	9							UH 19F	MB	11	
A 1H				MY	20							UH 19E	MD	5	
A 1H				P4	25							UH 19E	MX	1	
A 1H				MB	23							CH 37C	MX	1	
A 1E				MX	36							UH 43C	MX	1	
A 1E				MY	6							CH 19E	MX	4	
A 1G				MX	46							CH 19E	P4	3	
A 1G				P4	2							DF 8A	MX	2	
A 1G				MB	14							DF 4E	MY	1	
EA 1F				MX	3							N F 11A	MX	1	
S 2C				MX	14							N F 3B	MX	1	
S 2C				P4	1							N A 4A	MX	1	
S 2A				MX	39							N S 2A	MX	7	
S 2A				P4	27										
S 2A				MB	3										
TS 2A				MX	23										
TS 2A				P5	1										
													NON-OPERATIONAL SUPPORT		592
													RESERVE STOCK		1556
													TOTAL PROGRAM		2148
													NON-PROGRAM (INCLUDING DRONES)		686
													TOTAL INVENTORY		2834

~~CONFIDENTIAL~~

DECLASSIFIED

PROGRAM OPERATING ALLOWANCES*

TABLE 2

SUBCLASS	TOTAL	LANT USN	LANT USMC	PAC USN	PAC USMC	NABS USN	NABS USMC	NABTC	NAATC	NATTC	NART	RDT&E
VF F8	1231	242	108	349	153			6	110	32	196	55
VF P	90	22	9	30	18						8	3
VA L	894	200	120	298	120						128	28
VA M	12	10										2
VA H	151	64		81								6
VA P	19	9		10								
VA Q	20	9		9		1						1
VA QM	57	12	9	18	18							
VA LP	263	82		131					18		24	8
VS	442	122		101		2		4	86		120	7
VP L	465	188		136		1					132	8
VP S	53			53								
VM M	109	51		56								2
VW H	75	28		39		2				2		4
VR H	145	31	3	35	5	12	2	3	1		50	3
VR M	171	45	9	17	15	41	14	5	6	4	9	6
VR C	65	30		32		1		1				1
VG	52		12		24						15	1
VU L	51	7	9		16	13		1			2	
VU G	45	13		19		10		2				1
VU M TOW	23	2		21								
VT AJ	249	44	20	44	35			1	102			3
VT BJ	287		17	15	10	84	7	97	3		43	5
VT SJ	47	4		9						31		3
VT AP	362	20	2	33	7	158	16	54	12	23	36	1
VT BP	457	6		8		39	21	364	7	9		3
VT PP	139	1						111		9	18	
VT SP	83	5	2	10		2		1	60	1	2	
H S	248	103		75			2				57	11
H L	87	10	9	8	27		4	29				
H M	443	13	120	18	192	2	18	62			17	1
H H	28		14		14							
H G	167	53		52	4	28	8	8	10	2		2
VK D JET	38	8		15								15
VK D PROP	23	14		4								5
TOTAL	7091	1448	463	1726	658	396	95	749	415	119	857	165

* AS OF 31 MARCH 1964

~~CONFIDENTIAL~~

~~CONFIDENTIAL~~

DECLASSIFIED

PROGRAM OPERATING ALLOWANCES*
LANT

TABLE 2A

SUBCLASS	TOTAL	NAVY COMBAT	FLT. TRNG.	O SEAS BASES	IN FLIGHT REFUELER	VURONS	OPERATOR	CV UTILITY	ATT. & MISS	MARINE COMBAT	H & HS	VNT-2
VF FB	350	215				27				108		
VF P	31	22								9		
VA L	320	200								120		
VA M	10	10										
VA H	64	64										
VA P	9	9										
VA Q	9	9										
VA QM	21	12								9		
VA LP	82	82										
VS	122	115		2			5					
VP L	188	184					4					
VP S												
VW M	51	51										
VW H	28	28										
VR H	34	14	3	8			6			2	1	
VR M	54	9		16			6		14	8	1	
VR C	30	18						12				
VG	12				12							
VU L	16			2			5			9		
VU G	13			11					2			
VU M TOW	2					2						
VT AJ	64		44									20
VT BJ	17									15	2	
VT SJ	4		4									
VT AP	22			20							2	
VT BP	6		6									
VT PP	1			1								
VT SP	7		5							2		
H S	103	93		2			4	4				
H L	19	10								9		
H M	133	7				2	4			120		
H H	14									14		
H G	53	42		11								
VK D JET	8					8						
VK D PROP	14					14						
TOTAL	1911	1194	62	73	12	53	34	16	16	425	6	20

* AS OF 31 MARCH 1964

~~CONFIDENTIAL~~

~~CONFIDENTIAL~~

TABLE 2B PROGRAM OPERATING ALLOWANCES* PAC DECLASSIFIED

SUBCLASS	TOTAL	NAVY COMBAT	FLT. BRNG.	OISEAS BASES	IN FLIGHT REFUELER	VURONS	OPERFOR	CV UTILITY	ATT. & MISS	MARINE COMBAT	H & RS	VNT-1
VF FB	502	307				34	8			153		
VF P	48	30								18		
VA L	418	291					7			120		
VA M												
VA H	81	81										
VA P	10	10										
VA Q	9	9										
VA QM	36	18								18		
VA LP	131	131										
VS	101	94							7			
VP L	136	136										
VP S	53	53										
VW M	56	56										
VW H	39	32										
VR H	40	20	4	6		1			7	4	1	
VR M	32	5		7					4	12	2	
VK C	32	18		1				13	6			
VG	24				24							
VU L	16											
VU G	19			19								
VU M TOW	21					21						
VT AJ	79		44							15		20
VT BJ	25			10		6			1	6	2	
VT SJ	9		9									
VT AP	40			28		5	2		2	2	1	
VT BP	8		8									
VT PP												
VT SP	10		9				1					
H S	75	75										
H L	35	8										
H M	210	3		6		4		3	2	27		
H H	14									192		
H G	56	42		12						14		
VK D JET	15					15				2		
VK D PROP	4					4						
TOTAL	2384	1419	74	89	24	90	18	16	29	599	6	20

* AS OF 31 MARCH 1964

~~CONFIDENTIAL~~

~~CONFIDENTIAL~~

DECLASSIFIED

TABLE 3

PROGRAM AIRCRAFT

PROGRAM INVENTORY BY STATUS AND PLANNED OPERATING ASSIGNMENTS

BY COMMAND, CLASS AND MODEL

CLASS AND MODEL	COMMAND	TOTAL	BUWEPS FR		OPERATING COMMANDS				PLANNED OPT'G. ASSIGNMENTS			
			NON OPERATIONAL SUPPORT	RESERVE STOCK	PAR & OPERATIONAL PIPELINE			ON BOARD OPERATING INV	*	*	*	*
					READY FOR ISSUE	NOT READY FOR ISSUE						
						UNDG. PAR & AIRLINE MAINTENANCE	OTHER					
							31 MAR 1964	30 JUN 1964	30 SEP 1964	31 DEC 1964		
	LANT	2145			76	167	54	1848				
	PAC	2755			67	196	131	2341				
	NABS	491				7	3	481	484	485	479	465
	NATRA	1456			7	72	9	1368				
	NART	856			38	60	17	741				
	RDT+E	174				12	3	159				
	BUWPS	2148	592	1556								
	TOTAL	10005	592	1556	188	514	217	6938	484	485	479	465
FIGHTER JET												
	LANT	444			18	61	17	348				
	PAC	647			33	67	47	500				
	NATRA	183			6	17	3	157				
	NART	52				13		39				
	RDT+E	38				3	3	32				
	BUWPS	588	27	561								
	TOTAL	1952	27	561	57	161	70	1076				
ATTACK JET												
	LANT	483			11	34	13	425				
	PAC	643			15	69	25	534				
	NABS	1						1	1	1	1	1
	NATRA	271			14	16	5	236				
	RDT+E	45				4		41				
	BUWPS	179	45	134								
	TOTAL	1622	45	134	40	123	43	1237	1	1	1	1
ATTACK PROP												
	LANT	93			2		1	90				
	PAC	164			2		5	157				
	NABS	2						2	2	2	2	2
	NATRA	23					1	22				
	NART	16						16				
	RDT+E	6						6				
	BUWPS	229	104	125								
	TOTAL	533	104	125	4		7	293	2	2	2	2
ANTI SUBMARINE												
	LANT	147			4	17	4	122				
	PAC	119			4	10	4	101				
	NABS	2				1		1	6	6	6	6
	NATRA	156				25	2	129				
	NART	132			5	13	2	112				
	RDT+E	8						8				
	BUWPS	90	14	76								
	TOTAL	654	14	76	13	66	12	473	6	6	6	6
PATROL												
	LANT	222			10	23	2	187				
	PAC	216			7	19	12	178				
	NABS	1						1	1	1	1	1
	NATRA	130			3	16	4	107				
	RDT+E	7				2		5				
	BUWPS	83	38	45								
	TOTAL	659	38	45	20	60	18	478	1	1	1	1
WARNING												
	LANT	93			1	9	2	81				
	PAC	105				8	1	96				
	NABS	2						2	2	2	2	2
	NATRA	3						3				
	RDT+E	6				1		5				
	BUWPS	32	12	20								
	TOTAL	241	12	20	1	18	3	187	2	2	2	2

a/ Includes B status.

* Planned Assignments of Table 3 are omitted from this issue with the exception of NABS, pending program review.

~~CONFIDENTIAL~~

PROGRAM AIRCRAFT

DECLASSIFIED ~~CONFIDENTIAL~~

TABLE 3

PROGRAM INVENTORY BY STATUS AND PLANNED OPERATING ASSIGNMENTS

BY COMMAND, CLASS AND MODEL

CLASS AND MODEL	COMMAND	TOTAL	BUWEPs FR		OPERATING COMMANDS				PLANNED OPT'G. ASSIGNMENTS			
			NON OPERATIONAL SUPPORT	RESERVE STOCK	PAR & OPERATIONAL PIPELINE			ON BOARD OPERATING INV.	31 MAR 1964	30 JUN 1964	30 SEP 1964	31 DEC 1964
					READY FOR ISSUE	UNDG. PAR & AIRLINE MAINTENANCE	OTHER					
TRANSPORT												
	LANT	126			2	9	5	110				
	PAC	108			2	7	5	94				
	NABS	67						67	67	66	66	66
	NATRA	18					1	17				
	NART	60			2		3	55				
	RDT+E	8						8				
	BUWPS	136	67	69	6	16	14	351	67	66	66	66
IN FLGT REFUEL												
	LANT	14			1	1		12				
	PAC	30				5		25				
	RDT+E	2				1		1				
	BUWPS	46			1	7		38				
UTILITY												
	LANT	44			5		1	38				
	PAC	64					3	61				
	NABS	26						26	26	26	26	26
	NATRA	3						3				
	NART	2						2				
	RDT+E	1						1				
	BUWPS	39	20	19	5		4	131	26	26	26	26
TRAINING JET												
	LANT	104			5	6	1	92				
	PAC	133				7	2	124				
	NABS	90				6	1	83	90	90	90	86
	NATRA	346				30	1	315				
	NART	49			3	2	2	42				
	RDT+E	10				1		9				
	BUWPS	156	14	142	8	52	7	665	90	90	90	86
TRAINING PROP												
	LANT	27			2		2	27				
	PAC	63						59				
	NABS	237					1	236	228	223	223	213
	NATRA	613			1			612				
	NART	62			1		1	60				
	RDT+E	4						4				
	BUWPS	365	119	246	4		4	998	228	223	223	213
ROTARY WING												
	LANT	330			13	6	5	306				
	PAC	429			2	4	25	398				
	NABS	63					1	62	61	68	62	62
	NATRA	111					1	110				
	NART	82			10			72				
	RDT+E	17						17				
	BUWPS	242	127	115	25	10	32	965	61	68	62	62
DRONES JET												
	LANT	13			3		3	7				
	PAC	9						9				
	RDT+E	16						16				
	BUWPS	8	4	4				8				
	BUWPS	46	4	4	3		3	32				
DRONES PROP												
	LANT	5			1	1		3				
	PAC	5						5				
	RDT+E	6						6				
	BUWPS	1	1		1	1		14				
	BUWPS	17	1		1	1		17				

~~CONFIDENTIAL~~

~~CONFIDENTIAL~~

PROGRAM AIRCRAFT

DECLASSIFIED

TABLE 3

PROGRAM INVENTORY BY STATUS AND PLANNED OPERATING ASSIGNMENTS

BY COMMAND, CLASS AND MODEL

CLASS AND MODEL	COMMAND	TOTAL	BUWEPs FR		OPERATING COMMANDS			PLANNED OPT'G. ASSIGNMENTS				
			NON OPERATIONAL SUPPORT	RESERVE STOCK	PAR & OPERATIONAL PIPELINE			ON BOARD OPERATING INV.	31 MAR 1964	30 JUN 1964	30 SEP 1964	31 DEC 1964
					READY FOR ISSUE	NOT READY FOR ISSUE						
						UNDG. PAR & AIRLINE MAINTENANCE	OTHER					
FIGHTER JET												
VF FB	LANT	406			18	56	14	318				
	PAC	590			32	62	44	452				
	NATRA	183			6	17	3	157				
	NART	45				13		32				
	RDT+E	35				3		30				
	BUWPS	585	27	558			2					
		1844	27	558	56	151	63	989				
VF P	LANT	38				5	3	30				
	PAC	57			1	5	3	48				
	NART	7						7				
	RDT+E	3						2				
	BUWPS	3		3			1	2				
		108		3	1	10	7	87				
		1952	27	561	57	161	70	1076				
ATTACK JET												
VA L	LANT	364			6	24	8	326				
	PAC	509			15	58	16	420				
	NART	271			14	16	5	236				
	RDT+E	37				4		33				
	BUWPS	145	24	121								
		1326	24	121	35	102	29	1015				
VA M	LANT	19						19				
	RDT+E	1						1				
	BUWPS	8	8									
		28	8					20				
VA H	LANT	61				9	5	47				
	PAC	92				6	8	78				
	RDT+E	4						4				
	BUWPS	18	7	11								
		175	7	11		15	13	129				
VA P	LANT	22			4			18				
	PAC	12				2		10				
	RDT+E	2						2				
	BUWPS	4	3	1								
		40	3	1	4	2		30				
VA Q	LANT	11			1	1		9				
	PAC	11				1		10				
	NABS	1						1	1	1	1	1
	RDT+E	1						1				
		24			1	2		21	1	1	1	1
VA QM	LANT	6						6				
	PAC	19				2	1	16				
	BUWPS	4	3	1								
		29	3	1		2	1	22				
		1622	45	134	40	123	43	1237	1	1	1	1
ATTACK PROP												
VA LP	LANT	80			1		1	78				
	PAC	145			2		4	139				
	NABS	2						2	2	2	2	2
	NATRA	23					1	22				
	NART	16						16				
	RDT+E	6						6				
	BUWPS	223	101	122								
		495	101	122	3		6	263	2	2	2	2
VA QMP	LANT	13			1			12				
	PAC	19					1	18				
	BUWPS	6	3	3								
		38	3	3	1		1	30				
		533	104	125	4		7	293	2	2	2	2

~~CONFIDENTIAL~~

PROGRAM AIRCRAFT

DECLASSIFIED ~~CONFIDENTIAL~~ DECLASSIFIED

TABLE 3
PROGRAM INVENTORY BY STATUS AND PLANNED OPERATING ASSIGNMENTS

BY COMMAND, CLASS AND MODEL

CLASS AND MODEL	COMMAND	TOTAL	BUWEPS FR		OPERATING COMMANDS				PLANNED OPT'G. ASSIGNMENTS			
			NON OPERATIONAL SUPPORT	RESERVE STOCK	PAR & OPERATIONAL PIPELINE			ON BOARD OPERATING INV.	31 MAR 1964	30 JUN 1964	30 SEP 1964	31 DEC 1964
					READY FOR ISSUE	UNDG. PAR & AIRLINE MAINTENANCE	OTHER					
ANTI SUBMARINE												
VS	LANT	147			4	17	4	122				
	PAC	119			4	10	4	101				
	NABS	2				1		1	6	6	6	6
	NATRA	156				25	2	129				
	NART	132			5	13	2	112				
	RDT+E	8						8				
	BUWPS	90	14	76								
		654	14	76	13	66	12	473	6	6	6	6
PATROL												
VP L	LANT	219				9	23	1	186			
	PAC	158				7	19	2	130			
	NABS	1							1	1	1	1
	NART	130				3	16	4	107			
	RDT+E	7					2		5			
	BUWPS	33	5	28								
			548	5	28	19	60	7	429	1	1	1
VP S	LANT	3				1		1				
	PAC	58						10	48			
	BUWPS	50	33	17								
		111	33	17	1			11	49			
		659	38	45	20	60	18	478	1	1	1	1
WARNING												
VW M	LANT	56				1	5	2	48			
	PAC	58					3	1	54			
	RDT+E	2							2			
	BUWPS	15	12	3								
		131	12	3	1	8	3	104				
VW H	LANT	37					4		33			
	PAC	47					5		42			
	NABS	2							2	2	2	2
	NATRA	3							3			
	RDT+E	4					1		3			
	BUWPS	17		17								
		110		17			10		83	2	2	2
		241	12	20	1	18	3	187	2	2	2	2
TRANSPORT												
VR H	LANT	36					4	2	30			
	PAC	38				1	2	3	32			
	NABS	14							14	14	14	14
	NATRA	6							6			
	NART	37						2	35			
	RDT+E	2							2			
	BUWPS	38	38									
	171	38			1	6	7	119	14	14	14	14
VR M	LANT	55						1	54			
	PAC	34						1	33			
	NABS	52							52	52	52	52
	NATRA	12						1	11			
	NART	23				2		1	20			
	RDT+E	5							5			
	BUWPS	97	28	69								
		278	28	69	2		4	175	52	52	52	52

~~CONFIDENTIAL~~

~~CONFIDENTIAL~~
TABLE 3

PROGRAM AIRCRAFT

DECLASSIFIED

PROGRAM INVENTORY BY STATUS AND PLANNED OPERATING ASSIGNMENTS
BY COMMAND, CLASS AND MODEL

CLASS AND MODEL	COMMAND	TOTAL	BUWEPS FR		OPERATING COMMANDS				PLANNED OPT'G. ASSIGNMENTS				
			NON OPERATIONAL SUPPORT	RESERVE STOCK	PAR & OPERATIONAL PIPELINE			ON BOARD OPERATING INV.	31 MAR 1964	30 JUN 1964	30 SEP 1964	31 DEC 1964	
					READY FOR ISSUE	NOT READY FOR ISSUE							
						UNDG. PAR & AIRLINE MAINTENANCE	OTHER						
VR C	LANT PAC NABS RDT+E BUWPS	35 36 1 1 1 74			2 1	5 5	2 1	26 29		1			
		523	67	69	6	16	14	351	67	66	66	66	
IN FLGT REFUEL													
VG	LANT PAC RDT+E	14 30 2 46			1 1	1 5 1 7		12 25 1 38					
UTILITY													
VU L	LANT PAC NABS NATRA NART BUWPS	14 20 16 1 2 10 63		4 4	4 4		1	9 20 16 1 2	16	16	16	16	
VU G	LANT PAC NABS NATRA RDT+E BUWPS	14 23 10 2 1 20 70	6 6	4 4	4		3	14 20 10 2 1	10	10	10	10	
VU M TOW	LANT PAC BUWPS	16 21 9 46			1			15 21					
		179	20	19	5		4	131	26	26	26	26	
TRAINING JET													
VT AJ	LANT PAC NATRA RDT+E BUWPS	75 88 130 4 35 332			1	6 6 12 1		68 81 117 3					
VT B-J	LANT PAC NABS NATRA NART RDT+E BUWPS	23 34 90 192 49 3 103 494		35 35	1	25	2	18 32 63 174 42 3	90	90	90	86	
VT SJ	LANT PAC NATRA RDT+E BUWPS	6 11 24 3 18 62	3 3	15 15	7	27	5	6 11 24 3 44	90	90	90	86	
		888	14	142	8	52	7	665	90	90	90	86	

~~CONFIDENTIAL~~

DECLASSIFIED ~~CONFIDENTIAL~~

TABLE 3
PROGRAM AIRCRAFT
PROGRAM INVENTORY BY STATUS AND PLANNED OPERATING ASSIGNMENTS
BY COMMAND, CLASS AND MODEL

CLASS AND MODEL	COMMAND	TOTAL	BUWEPS FR		OPERATING COMMANDS			PLANNED OPT'G. ASSIGNMENTS					
			NON OPERATIONAL SUPPORT	RESERVE STOCK	PAR & OPERATIONAL PIPELINE		ON BOARD OPERATING INV.	31 MAR 1964	30 JUN 1964	30 SEP 1964	31 DEC 1964		
					READY FOR ISSUE	UNDG. PAR & AIRLINE MAINTENANCE						OTHER	
TRAINING PROP													
VT AP	LANT	18					18						
	PAC	47			2		43						
	NABS	176					1	175	168	163	163	153	
	NATRA	95						95					
	NART	41			1			1	39				
	RDT+E	1							1				
BUWPS	108	32	76										
		486	32	76	3		4	371	168	163	163	153	
VT BP	LANT	6					6						
	PAC	14					14						
	NABS	61						61	60	60	60	60	
	NATRA	380						380					
	RDT+E	3						3					
	BUWPS	111	68	43									
		575	68	43				464	60	60	60	60	
VT PP	NATRA	129				1		128					
	NART	19						19					
	BUWPS	144	19	125									
		292	19	125	1			147					
VT SP	LANT	3					3						
	PAC	2					2						
	NATRA	9						9					
	NART	2						2					
	BUWPS	2		2									
			18		2				16				
		1371	119	246	4		4	998	228	223	223	213	
ROTARY WING													
H S	LANT	96			2		6	1	87				
	PAC	81					4	3	74				
	NABS	5							5	5	5	5	5
	NATRA	49							49				
	NART	71				10			61				
	RDT+E	14							14				
BUWPS	97	32	65										
		413	32	65	12		10	4	290	5	5	5	5
H L	LANT	15							15				
	PAC	36			1			1	34				
	NABS	1											
	NATRA	30						1	29		2	4	4
	RDT+E	1							1				
	BUWPS	25	9	16									
		107	9	16	1			2	79		2	4	4
H M	LANT	146				10		2	134				
	PAC	236				1		16	219				
	NABS	19						1	18	19	19	17	18
	NATRA	21							21				
	NART	11							11				
	RDT+E	1							1				
BUWPS	55	45	10										
		489	45	10	11			19	404	19	19	17	18
H H	LANT	13							13				
	PAC	14							14				
	BUWPS	8	6	2									
		35	6	2					27				
H G	LANT	60				1		2	57				
	PAC	62						5	57				
	NABS	39							39	37	42	36	35
	NATRA	11							11				
	RDT+E	1							1				
	BUWPS	57	35	22									
		230	35	22	1			7	165	37	42	36	35
		1274	127	115	25		10	32	965	61	68	62	62

CONFIDENTIAL

CONFIDENTIAL

PROGRAM AIRCRAFT

TABLE 3

DECLASSIFIED

PROGRAM INVENTORY BY STATUS AND PLANNED OPERATING ASSIGNMENTS

BY COMMAND, CLASS AND MODEL

CLASS AND MODEL	COMMAND	TOTAL	BUWEPS FR		OPERATING COMMANDS			PLANNED OPT'G. ASSIGNMENTS			
			NON OPERATIONAL SUPPORT	RESERVE STOCK	PAR & OPERATIONAL PIPELINE		ON BOARD OPERATING INV.	31 MAR 1964	30 JUN 1964	30 SEP 1964	31 DEC 1964
					READY FOR ISSUE	NOT READY FOR ISSUE					
DRONES JET											
VK D	LANT	13			3		3	7			
	PAC	9						9			
	RDT+E	16						16			
	BUWPS	8	4	4	3		3	32			
		46	4	4							
DRONES PROP											
VK D	LANT	5			1	1		3			
	PAC	5						5			
	RDT+E	6						6			
	BUWPS	1	1		1	1		14			
		17	1								
FIGHTER JET											
VF FB F 8C	LANT	55			1	7	3	44			
	PAC	66			6	8	7	45			
	RDT+E	3						3			
	BUWPS	4	2	2	7	15	10	92			
		128	2	2							
* F 8D	LANT	44				8		36			
	PAC	68			6	11	4	47			
	RDT+E	4				1		3			
	BUWPS	4	2	2	6	20	4	86			
		120	2	2							
* F 8E	LANT	88			5	17	2	64			
	PAC	119			7	11	3	98			
	RDT+E	4				1		3			
	BUWPS	8	8		12	29	5	165			
		219	8								
F 8A	LANT	28				3		25			
	PAC	65			1	3	4	57			
	NART	7				1		6			
	RDT+E	2					1	1			
		51	2	49							
		153	2	49	1	7	5	89			
F 8B	LANT	35				9		26			
	PAC	48			1	6	1	40			
	RDT+E	1						1			
	BUWPS	3		3	1	15	1	67			
		87		3							
F 11A	NATRA	75			1	10	1	63			
	RDT+E	1						1			
	BUWPS	40		40	1	10	1	64			
		116		40							
F 9J	BUWPS	14		14							
		14		14							
AF 9J	NATRA	70				7	1	62			
	BUWPS	177		177							
		247		177		7	1	62			
F 9H	BUWPS	1		1							
		1		1							
* F 4B	LANT	111			5	8	5	93			
	PAC	150			2	18	6	124			
	RDT+E	8					1	7			
	BUWPS	12	12		7	26	12	224			
		281	12								

* COMBAT FIRST LINE MODELS

CONFIDENTIAL

DECLASSIFIED ~~CONFIDENTIAL~~

TABLE 3
PROGRAM AIRCRAFT
PROGRAM INVENTORY BY STATUS AND PLANNED OPERATING ASSIGNMENTS

BY COMMAND, CLASS AND MODEL

CLASS AND MODEL	COMMAND	TOTAL	BUWEPs FR		OPERATING COMMANDS				PLANNED OPT'G. ASSIGNMENTS			
			NON OPERATIONAL SUPPORT	RESERVE STOCK	PAR & OPERATIONAL PIPELINE			ON BOARD OPERATING INV.	31 MAR 1964	30 JUN 1964	30 SEP 1964	31 DEC 1964
					READY FOR ISSUE	NOT READY FOR ISSUE						
						UNDG. PAR & AIRLINE MAINTENANCE	OTHER					
F 4A	LANT PAC RDT+E BUWPS	10 13 8 1 32				4 5 1 10	1	5 8 7 20				
F 3B	LANT PAC BUWPS	18 35 126 179				9 126 9		2 3 5 39				
F 3C	BUWPS	1 1		1 1								
F 1E	NATRA NART BUWPS	38 16 9 63				5 6 9 5 6	1	32 10 42				
F 1C	BUWPS	2 2		2 2								
F 6A	LANT PAC NART RDT+E BUWPS	17 26 22 4 132 201				7 6 7 6	1 16 16 4 17 39	9 10 16 4 39				
		1844	27	558	56	151	63	989				
VF P	* RF 8A	LANT PAC RDT+E BUWPS				5 5 1 10	3 3 1 7	28 48 1 77				
	RF 9J	LANT NART RDT+E						2 7 1 10				
		108		3	1	10	7	87				
ATTACK JET												
VA L	* A 4E	LANT PAC RDT+E BUWPS				1 1 2	1 3 4	81 105 6 192				
	A 4R	LANT PAC NART RDT+E BUWPS				3 3 11 1 17	5 30 6 1 42	38 70 135 20 263				
	* A 4C	LANT PAC RDT+E BUWPS				3 11 2 14	18 28 2 48	207 245 6 458				
	A 4A	NART BUWPS						6 6				
	AF 1E	PAC NART RDT+E BUWPS				1 3 4 10		95 1 96				
		128	1	15	4	10	2	96				
		1326	24	121	35	102	29	1015				

* COMBAT FIRST LINE MODELS

~~CONFIDENTIAL~~

~~CONFIDENTIAL~~

DECLASSIFIED

PROGRAM AIRCRAFT

TABLE 3

PROGRAM INVENTORY BY STATUS AND PLANNED OPERATING ASSIGNMENTS

BY COMMAND, CLASS AND MODEL

CLASS AND MODEL	COMMAND	TOTAL	BUWEPS FR		OPERATING COMMANDS				PLANNED OPT'G. ASSIGNMENTS				
			NON OPERATIONAL SUPPORT	RESERVE STOCK	PAR & OPERATIONAL PIPELINE			ON BOARD OPERATING INV.	31 MAR 1964	30 JUN 1964	30 SEP 1964	31 DEC 1964	
					READY FOR ISSUE	NOT READY FOR ISSUE							
						UNDG. PAR & AIRLINE MAINTENANCE	OTHER						
VA M * A 6A	LANT RDT+E BUWPS	19 1 8 28		8 8					19 1 20				
VA H A 5C	LANT	1 1							1 1				
* A 5A	LANT RDT+E BUWPS	34 1 7 42		5 5 2		3	4		27 1 28				
A 3B	LANT PAC BUWPS	24 85 3 112		2 2 1		6 6 12	1 7 8		17 72 89				
A 3A	LANT PAC RDT+E BUWPS	2 7 3 8 20 175		8 8			1		2 6 3 11				
			7	11		15	13		129				
VA P * RA 5C	LANT RDT+E BUWPS	10 1 3 14		3 3					10 1 11				
* RA 3B	LANT PAC RDT+E BUWPS	12 12 1 1 26 40		1 1		4 4	2		8 10 1 19				
			3	1		4	2		30				
VA Q * EA 3B	LANT PAC	11 11 22				1 1	1 2		9 10 19				
VA 3B	NABS	1 1							1 1	1 1	1 1	1 1	1 1
EA 3A	RDT+E	1 1							1 1				
		24				1	2		21	1	1	1	1
VA QM EF 10B	LANT PAC BUMPS	6 19 4 29		3 3	1 1		2 1		6 16 22				

* COMBAT FIRST LINE MODELS

~~CONFIDENTIAL~~

TABLE 3

PROGRAM INVENTORY BY STATUS AND PLANNED OPERATING ASSIGNMENTS

BY COMMAND, CLASS AND MODEL

CLASS AND MODEL	COMMAND	TOTAL	BUWPS FR		OPERATING COMMANDS			PLANNED OPT'G. ASSIGNMENTS				
			NON OPERATIONAL SUPPORT	RESERVE STOCK	PAR & OPERATIONAL PIPELINE			ON BOARD OPERATING INV.	31 MAR 1964	30 JUN 1964	30 SEP 1964	31 DEC 1964
					READY FOR ISSUE	NOT READY FOR ISSUE						
					UNDG. PAR & AIRLINE MAINTENANCE	OTHER						
ATTACK PROP												
VA LP												
A 1J	PAC	32						32				
	BUWPS	12	7	5								
		44	7	5				32				
A 1H	LANT	69				1	1	67				
	PAC	102				2	2	98				
	NATRA	22						22				
	RDT+E	1						1				
	BUWPS	71	42	29								
		265	42	29	3		3	188				
A 1E	LANT	6						6				
	PAC	10					2	8				
	NABS	2						2	2	2	2	
	NATRA	1					1					
	NART	16						16				
	RDT+E	3						3				
	BUWPS	92	50	42								
		130	50	42			3	35	2	2	2	
UA 1E	LANT	5						5				
		5						5				
A 1G	PAC	1						1				
	RDT+E	2						2				
	BUWPS	48	2	46								
		51	2	46				3				
		495	101	122	3		6	263	2	2	2	
VA QMP												
EA 1F	LANT	13				1		12				
	PAC	19					1	18				
	BUWPS	6	3	3								
		38	3	3	1		1	30				
ANTI SUBMARINE												
VS												
* S 2E	LANT	28				1		27				
	PAC	40				2		38				
	BUWPS	6	6									
		74	6			3		65				
* S 2D	LANT	60				1	10	45				
	PAC	31				4		23				
	RDT+E	3					4	3				
	BUWPS	2	2									
		96	2		5	10	8	71				
S 2C	BUWPS	14		14								
		14		14								
RS 2C	LANT	1						1				
		1						1				
S 2A	LANT	1						1				
	PAC	8						8				
	NABS	2				1		1	6	6	6	
	NATRA	1						1				
	NART	3				1	1	1				
	RDT+E	5						5				
	BUWPS	40	1	39								
		60	1	39	1	2		17	6	6	6	
TS 2A	NATRA	151					25	2				
	BUWPS	24	1	23				2				
		175	1	23			25	124				

* COMBAT FIRST LINE MODELS

~~CONFIDENTIAL~~

DECLASSIFIED

TABLE 3

PROGRAM AIRCRAFT

PROGRAM INVENTORY BY STATUS AND PLANNED OPERATING ASSIGNMENTS

BY COMMAND, CLASS AND MODEL

CLASS AND MODEL	COMMAND	TOTAL	BUWEPS FR		OPERATING COMMANDS			PLANNED OPT'G. ASSIGNMENTS					
			NON OPERATIONAL SUPPORT	RESERVE STOCK	PAR & OPERATIONAL PIPELINE		ON BOARD OPERATING INV.	31 MAR 1964	30 JUN 1964	30 SEP 1964	31 DEC 1964		
					READY FOR ISSUE	NOT READY FOR ISSUE						UNDG. PAR & AIRLINE MAINTENANCE	OTHER
S 2B	PAC	5						3					
	NART	4				1	1	2					
	BUWPS	1	1										
		8	1			1	1	5					
S 2F	LANT	57			3	6		48					
	PAC	37				8		29					
	NABS												2
	NATRA	4						4					
	NART	125			4	11	1	109					
	BUWPS	3	3		7	25	1	190					2
		226	3		7	25	1	190					2
		654	14	76	13	66	12	473	6	6	6	6	
PATROL													
VP L	* P 3A	LANT	38			4		34					
		PAC	24				1	23					
		RDT+E	1				1						
			63				5	57					
	* P 2H	RDT+E	1					1					
			1					1					
	LP 2J	BUWPS	2		2								
			2		2								
	* SP 2H	LANT	100			6	10	1	83				
		PAC	85			6	9	1	69				
		NABS	1					1	1	1	1	1	1
		BUWPS	1	1									
			187	1		12	19	2	153	1	1	1	1
	P 2F	NART	7			1		2	4				
		BUWPS	11		11								
			18		11	1		2	4				
	P 2G	BUWPS	1		1								
			1		1								
	TP 2F	NART	3						3				
		BUWPS	6		6								
			9		6				3				
	EP 2E	NART	69				10	1	58				
			69				10	1	58				
	P 2E	LANT	1						1				
		NART	2						2				
		RDT+E	1						1				
		BUWPS	4	3	1								
			8	3	1				4				
	SP 2E	LANT	80			3	9		68				
		PAC	49			1	10		38				
		NART	49			2	6	1	40				
		RDT+E	4				1		3				
		BUWPS	8	1	7								
			190	1	7	6	26	1	149				
			548	5	28	19	60	7	429	1	1	1	1
VP S	P 5B	PAC	1						1				
		BUWPS	2		2								
			3		2				1				
	SP 5B	LANT	3			1			1				
		PAC	54					10	44				
		BUWPS	34	32	2								
			91	32	2	1		11	45				

* COMBAT FIRST LINE MODELS

DECLASSIFIED ~~CONFIDENTIAL~~

TABLE 3
PROGRAM AIRCRAFT
PROGRAM INVENTORY BY STATUS AND PLANNED OPERATING ASSIGNMENTS
BY COMMAND, CLASS AND MODEL

CLASS AND MODEL	COMMAND	TOTAL	BUWPS FR		OPERATING COMMANDS				PLANNED OPT'G. ASSIGNMENTS				
			NON OPERATIONAL SUPPORT	RESERVE STOCK	PAR & OPERATIONAL PIPELINE			ON BOARD OPERATING INV.	31 MAR 1964	30 JUN 1964	30 SEP 1964	31 DEC 1964	
					READY FOR ISSUE	UNDG. PAR & AIRLINE MAINTENANCE	OTHER						
P 5A	BUWPS	3	1	2									
		3	1	2									
SP 5A	PAC	3							3				
	BUWPS	11		11									
		14		11									
		111	33	17	1		11	49					
WARNING													
VM H													
* E 1B	LANT	39			1	5		33					
	PAC	41				3		38					
	RDT+E	1						1					
	BUWPS	2	2										
		83	2		1	8		72					
* E 2A	PAC	1						1					
	RDT+E	1						1					
	BUWPS	6	6										
		8	6					2					
EA 1E	LANT	17						15					
	PAC	16						1					
	BUWPS	7	4	3									
		40	4	3				3					
		131	12	3	1	8	3	104					
VM H													
* WC 121N	LANT	8						8					
		8						8					
* EC 121K	LANT	16				4		12					
	PAC	43				4		39					
	NATRA	3						3					
	RDT+E	4				1		3					
	BUWPS	17		17									
		83		17		9		57					
* NC 121K	NABS	2						2	2	2	2	2	2
		2						2	2	2	2	2	2
* EC 121M	LANT	3						3					
	PAC	4				1		3					
		7				1		6					
* EC 121P	LANT	10						10					
		10						10					
		110		17		10		83	2	2	2	2	2
TRANSPORT													
VR H													
* C 130F	LANT	7				3		4					
		7				3		4					
* C 130G	PAC	1						1					
	BUWPS	3	3										
		4	3					1					
* C 121J	LANT	6				1	1	4					
	PAC	7				2		5					
		13				3	1	9					
C 118B	LANT	1						1					
	PAC	11						10					
	BUWPS	4	4										
		16	4					11					
VC 118B	LANT	4						4					
	PAC	2					1	1					
		6					1	5					

* COMBAT FIRST LINE MODELS

~~CONFIDENTIAL~~

DECLASSIFIED

~~CONFIDENTIAL~~

PROGRAM AIRCRAFT

TABLE 3

PROGRAM INVENTORY BY STATUS AND PLANNED OPERATING ASSIGNMENTS

BY COMMAND, CLASS AND MODEL

CLASS AND MODEL	COMMAND	TOTAL	BUWEPs FR		OPERATING COMMANDS				PLANNED OPT'G. ASSIGNMENTS			
			NON OPERATIONAL SUPPORT	RESERVE STOCK	PAR & OPERATIONAL PIPELINE			ON BOARD OPERATING INV.	31 MAR 1964	30 JUN 1964	30 SEP 1964	31 DEC 1964
					READY FOR ISSUE	UNDG. PAR & AIRLINE MAINTENANCE	OTHER					
C 54S	LANT	8						8				
	PAC	3					1	2				
	BUWPS	1	1									
		12	1				1	10				
C 54T	BUWPS	1	1									
		1	1									
VC 54S	PAC	1						1				
		1						1				
C 54R	PAC	2						2				
	NABS	3						3	3	3	3	3
	NATRA	1						1				
	NART	3						3				
	BUWPS	3	3									
		12	3					9	3	3	3	3
NC 54R	NABS	1						1	1	1	1	1
		1						1	1	1	1	1
C 54Q	LANT	2						2				
	PAC	5						5				
	NABS	6						6	4	4	4	4
	NATRA	2						2				
	NART	21						21				
	RDTE	1						1				
	BUWPS	19	19									
		56	19					37	4	4	4	4
VC 54Q	LANT	1						1				
	NATRA	1						1				
		2						2				
** C 54QC	NABS								5	5	5	5
									5	5	5	5
C 54P	PAC	4				1		3				
	NABS	3						3				
	NATRA	2						2				
	NART	13						11				
	RDTE	1						1				
	BUWPS	7	7									
		30	7			1		20				
VC 54P	LANT	2						2				
	PAC	2						2				
	NABS	1						1				
		5						5				
** VC 54PC	NABS								1	1	1	1
									1	1	1	1
VC 54N	LANT	1						1				
		1						1				
* LC 130F	LANT	4					1	3				
		4					1	3				
		171	38			1	6	7	119	14	14	14
VR M												
C 119F	NABS	1						1	1	1	1	1
	NART	15						14				
	BUWPS	37	1	36		1						
		53	1	36		1		15	1	1	1	1
C 117D	LANT	11						11				
	PAC	13						12				
	NABS	22					1	22	26	25	25	25
	NATRA	6						5				
	NART	5				1		3				
	BUWPS	20	16	4								
		77	16	4		1		53	26	25	25	25
LC 117D	LANT	1						1				
		1						1				

* COMBAT FIRST LINE MODELS ** MODELS NOT SHOWING INVENTORY ARE FOR PLANNING PURPOSES.

~~CONFIDENTIAL~~

PROGRAM AIRCRAFT

TABLE 3

PROGRAM INVENTORY BY STATUS AND PLANNED OPERATING ASSIGNMENTS

BY COMMAND, CLASS AND MODEL

CLASS AND MODEL	COMMAND	TOTAL	BUWEPs FR		OPERATING COMMANDS			PLANNED OPT'G. ASSIGNMENTS					
			NON OPERATIONAL SUPPORT	RESERVE STOCK	READY FOR ISSUE	PAR & OPERATIONAL PIPELINE		ON BOARD OPERATING INV.	31 MAR 1964	30 JUN 1964	30 SEP 1964	31 DEC 1964	
						UNDG. PAR & AIRLINE MAINTENANCE	OTHER						
VC 117D	PAC	1											
	NABS	2											
		3											
C 47J	LANT	21											
	PAC	7											
	NABS	9							3	3	3	3	
	NATRA	2											
	RDT+E	1											
	BUWPS	10	7	3									
		50	7	3					3	3	3	3	
TC 47J	LANT	1											
	BUWPS	6		6									
		7		6									
VC 47J	BUWPS	2		2									
		2		2									
** C 47HJ	NABS								5	6	6	6	6
									5	6	6	6	6
C 47H	LANT	4											
	PAC	8											
	NABS	7							3	3	3	3	
	NATRA	3											
	RDT+E	2											
	BUWPS	9	1	8									
		33	1	8					3	3	3	3	
TC 47H	BUWPS	10		10									
		10		10									
LC 47H	LANT	4					1	3					
		4					1	3					
C 131G	NABS	2						2	2	2	2	2	
		2						2	2	2	2	2	
C 131F	LANT	13						13					
	PAC	5						5					
	NABS	9						9	10	10	10	10	
	NATRA	1						1					
	NART	3						3					
	RDT+E	2						2					
	BUWPS	3	3					3					
		36	3					33	10	10	10	10	
		278	28	69	2		4	175	52	52	52	52	
VR C													
C 1A	LANT	35			2	5	2	26					
	PAC	36			1	5	1	29					
	NABS	1						1	1				
	RDT+E	1						1					
	BUWPS	1	1					1					
		74	1		3	10	3	57	1				
IN FLGT REFUEL													
VG													
* KC 130F	LANT	14			1	1		12					
	PAC	30				5		25					
	RDT+E	2				1		1					
		46			1	7		38					

* COMBAT FIRST LINE MODELS ** MODELS NOT SHOWING INVENTORY ARE FOR PLANNING PURPOSES.

~~CONFIDENTIAL~~

TABLE 3

PROGRAM AIRCRAFT

DECLASSIFIED

PROGRAM INVENTORY BY STATUS AND PLANNED OPERATING ASSIGNMENTS

BY COMMAND, CLASS AND MODEL

CLASS AND MODEL	COMMAND	TOTAL	BUWEPs FR		OPERATING COMMANDS			PLANNED OPT'G. ASSIGNMENTS				
			NON OPERATIONAL SUPPORT	RESERVE STOCK	PAR & OPERATIONAL PIPELINE			ON BOARD OPERATING INV.	31 MAR 1964	30 JUN 1964	30 SEP 1964	31 DEC 1964
					READY FOR ISSUE	NOT READY FOR ISSUE						
						UNDG. PAR & AIRLINE MAINTENANCE	OTHER					
UTILITY												
VU L												
U 11A	NABS	16					16	16	16	16	16	
	NATRA	1					1					
	NART	2					2					
		19					19	16	16	16	16	
U 1B	LANT	6			4		1					
		6			4		1					
U 6A	LANT	2					2					
	PAC	1					1					
		3					3					
O 1C	LANT	2					2					
	PAC	7					7					
	BUWPS	5	2	3			9					
		14	2	3			9					
O 1B	LANT	4					4					
	PAC	12					12					
	BUWPS	5	4	1			16					
		21	4	1			16					
		63	6	4	4		48	16	16	16	16	
VU G												
HU 16D	LANT	11					11					
	PAC	14					12					
	NABS	1				2	1	1	1	1	1	
	BUWPS	2		2			1	1	1	1	1	
		28		2			24	1	1	1	1	
HU 16C	LANT	3					3					
	PAC	9					8					
	NABS	9				1	9	9	9	9	9	
	NATRA	2					2					
	RDT+E	1					1					
	BUWPS	15	5	10			23	9	9	9	9	
		39	5	10			23	9	9	9	9	
TU 16C	BUWPS	3		3								
		3		3								
		70	5	15			47	10	10	10	10	
VU M TOW												
US 2A	LANT	1					1					
		1					1					
US 2C	LANT	12				1	11					
	PAC	15					15					
	BUWPS	9	9				26					
		36	9			1	26					
UB 26J	LANT	3					3					
	PAC	6					6					
		9					9					
		46	9			1	36					
TRAINING JET												
VT AJ												
TF 9J	LANT	75				1	6					
	PAC	88					6					
	NATRA	130					12		1			
	RDT+E	4					1		1			
	BUWPS	35		35			3					
		332		35		1	25		2		269	

~~CONFIDENTIAL~~

DECLASSIFIED

~~CONFIDENTIAL~~

TABLE 3
PROGRAM AIRCRAFT
PROGRAM INVENTORY BY STATUS AND PLANNED OPERATING ASSIGNMENTS

BY COMMAND, CLASS AND MODEL

CLASS AND MODEL	COMMAND	TOTAL	BUWEPS FR		OPERATING COMMANDS				PLANNED OPT'G. ASSIGNMENTS			
			NON OPERATIONAL SUPPORT	RESERVE STOCK	READY FOR ISSUE	PAR & OPERATIONAL PIPELINE		ON BOARD OPERATING INV.	31 MAR 1964	30 JUN 1964	30 SEP 1964	31 DEC 1964
						UNDG. PAR & AIRLINE MAINTENANCE	OTHER					
VT BJ												
T 2A	NABS	16				3		13	16	16	16	16
	NATRA	173				14		159				
	BUMPS	1	1									
		190		1		17		172	16	16	16	16
T 1A	LANT	21			4		1	16				
	PAC	15				1		14				
	NABS	34				3		31	34	34	34	34
	NATRA	19				4		15				
	NART	20			2	2	1	15				
	RDT+E	3						3				
	BUMPS	14		14								
		126		14	6	10	2	94	34	34	34	34
T 33B	LANT	2						2				
	PAC	19						18				
	NABS	40					1	39	40	40	40	36
	NART	29			1		1	27				
	BUMPS	88	10	78								
		178	10	78	1		3	86	40	40	40	36
		494	11	92	7	27	5	352	90	90	90	86
VT SJ												
TA 3B	LANT	6						6				
	PAC	6						6				
		12						12				
TF 10B	PAC	5						5				
	NATRA	13						13				
	RDT+E	2						2				
	BUMPS	17	2	15								
		37	2	15				20				
T 39D	NATRA	11						11				
	RDT+E	1						1				
	BUMPS	1	1									
		13	1					12				
		62	3	15				44				
TRAINING PROP												
VT AP												
TC 45J	LANT	18						18				
	PAC	40			1		2	37				
	NABS	168					1	167	160	155	155	145
	NATRA	86						86				
	NART	37			1		1	35				
		99	32	67								
		448	32	67	2		4	343	160	155	155	145
RC 45J	PAC	7				1		6				
	NABS	8						8	8	8	8	8
	NATRA	9						9				
	NART	4						4				
	RDT+E	1						1				
	BUMPS	9		9								
		38		9	1			28	8	8	8	8
		486	32	76	3		4	371	168	163	163	153
VT BP												
T 29B	NATRA	10						10				
		10						10				
T 28B	LANT	6						6				
	PAC	12						12				
	NABS	61						61	60	60	60	60
	NATRA	183						183				
	RDT+E	3						3				
	BUMPS	76	63	13								
		341	63	13				265	60	60	60	60

~~CONFIDENTIAL~~

DECLASSIFIED

~~CONFIDENTIAL~~

PROGRAM AIRCRAFT

TABLE 3

PROGRAM INVENTORY BY STATUS AND PLANNED OPERATING ASSIGNMENTS

BY COMMAND, CLASS AND MODEL

CLASS AND MODEL	COMMAND	TOTAL	BUWEPS FR		OPERATING COMMANDS				PLANNED OPT'G. ASSIGNMENTS					
			NON OPERATIONAL SUPPORT	RESERVE STOCK	PAR & OPERATIONAL PIPELINE			ON BOARD OPERATING INV.	31 MAR 1964	30 JUN 1964	30 SEP 1964	31 DEC 1964		
					READY FOR ISSUE	NOT READY FOR ISSUE								
						UNDG. PAR & AIRLINE MAINTENANCE	OTHER							
T 28C	PAC NATRA BUWPS	2 187 35 224							2 187 189					
		575	68	43				464	60	60	60	60		
VT PP	T 34B	NATRA NART BUWPS	129 19 144 292				1 1		128 19 147					
VT SP	EC 1A	LANT PAC	2 2 4						2 2 4					
	TC 117D	NATRA	8 8						8 8					
	TC 47K	LANT NATRA BUWPS	1 1 1 3						1 1 1 2					
	EC 47J	BUWPS	1 1				1 1							
	SC 47J	NART	1 1						1 1					
	SC 47H	NART	1 1						1 1					
			18		2				16					
ROTARY WING														
H S	* SH 3A	LANT PAC NABS RDT+E BUWPS	85 64 1 4 8 162				2	6 4	1 3	76 57 1 4 138				1 1 1 1
	* VH 3A	NABS	4 4				2	10	4	138	1	1	1	1
	SH 34G	PAC RDT+E BUWPS	1 6 8 15							1 6 7				
	UH 34G	LANT PAC NATRA RDT+E BUWPS	5 1 49 1 24 80							5 1 49 1 56				
	* SH 34J	LANT PAC NART RDT+E BUWPS	6 12 71 2 56 147						10	6 12 61 2 81				
	* UH 34J	PAC RDT+E BUWPS	3 1 1 5							3 1 4				
			413	32	65	12	10	4	290	5	5	5	5	

* COMBAT FIRST LINE MODELS

~~CONFIDENTIAL~~

DECLASSIFIED ~~CONFIDENTIAL~~

TABLE 3
PROGRAM AIRCRAFT
PROGRAM INVENTORY BY STATUS AND PLANNED OPERATING ASSIGNMENTS
BY COMMAND, CLASS AND MODEL

CLASS AND MODEL	COMMAND	TOTAL	BUWEPS FR		OPERATING COMMANDS				PLANNED OPT'G. ASSIGNMENTS					
			NON OPERATIONAL SUPPORT	RESERVE STOCK	PAR & OPERATIONAL PIPELINE			ON BOARD OPERATING INV.	31 MAR 1964	30 JUN 1964	30 SEP 1964	31 DEC 1964		
					READY FOR ISSUE	NOT READY FOR ISSUE								
						UNDG. PAR & AIRLINE MAINTENANCE	OTHER							
H L														
UH 1E	NABS										2	4	4	4
											2	4	4	4
UH 13P	LANT	3							3					
	PAC	5							5					
	BUWPS	5	2	3					8					
		13	2	3										
OH 43D	LANT	9							9					
	PAC	30				1			28					
	BUWPS	5						1						
		44		5		1		1	37					
TH 13N	LANT	3							3					
	PAC	1							1					
	RDT+E	1							1					
	BUWPS	6	3	3					5					
		11	3	3										
TR 13M	NATRA	30							1					
	BUWPS	9	4	5					29					
		39	4	5					1					
		107	9	16		1		2	79		2	4	4	4
H M														
* UH 34D	LANT	137				10			1	126				
	PAC	230				1			16	213				
	NABS	15								15	15	15	13	14
	NATRA	11								11				
	NART	11								11				
	BUWPS	44	36	8						376	15	15	13	14
		448	36	8		11		17	376	15	15	13	14	14
* UH 34E	LANT	5								5				
	PAC	6								6				
	RDT+E	1								1				
	BUWPS	1				1				12				
		13		1										
* VH 34D	NABS	4							1	3	4	4	4	4
		4							1	3	4	4	4	4
LH 34D	LANT	4								3				
	BUWPS	2	2						1	3				
		6	2						1	3				
UH 19F	NATRA	10								10				
	BUWPS	1				1				10				
		11				1				10				
* CH 46A	BUWPS	7	7											
		7	7											
		489	45	10		11		19	404	19	19	17	18	18
H H														
CH 37C	LANT	13								13				
	PAC	14								14				
	BUWPS	8	6	2						27				
		35	6	2										
H G														
UH 43C	PAC	11							2	9				
	NABS	1								1				
	BUWPS	4				4				10				
		16				4			2	10				
* UH 2B	LANT	12								12				
	PAC	11							1	10				
	NABS	4								4	10	20	26	26
	BUWPS	12	12							26	10	20	26	26
		39	12					1	26	10	20	26	26	26

* COMBAT FIRST LINE MODELS

~~CONFIDENTIAL~~

DECLASSIFIED

~~CONFIDENTIAL~~

PROGRAM AIRCRAFT

TABLE 3

PROGRAM INVENTORY BY STATUS AND PLANNED OPERATING ASSIGNMENTS

BY COMMAND, CLASS AND MODEL

CLASS AND MODEL	COMMAND	TOTAL	BUWEPS FR		OPERATING COMMANDS				PLANNED OPT'G. ASSIGNMENTS			
			NON OPERATIONAL SUPPORT	RESERVE STOCK	READY FOR ISSUE	PAR & OPERATIONAL PIPELINE		ON BOARD OPERATING INV.	31 MAR 1964	30 JUN 1964	30 SEP 1964	31 DEC 1964
						UNDG. PAR & AIRLINE MAINTENANCE	OTHER					
* UH 2A	LANT	22						22				
	PAC	23					1	22				
	RDT+E	1						1				
	BUWPS	21	21									
		67	21					1	45			
CH 19E	LANT	18				1		2	15			
	PAC	9							9			
	NABS	31							31	27	22	10
	NATRA	10							10			
	BUWPS	18		18								
		86		18	1			2	65	27	22	10
												9
UH 25B	LANT	8							8			
	PAC	8							7			
	NABS	3							3			
	NATRA	1							1			
	BUWPS	2	2									
		22	2					1	19			
		230	35	22	1			7	165	37	42	36
												35
DRONES JET												
VK D	DF 8A	PAC	4						4			
		RDT+E	2						2			
		BUWPS	2									
			8		2				6			
	DF 8F	LANT	8			1			1			6
		RDT+E	11									11
			19			1			1			17
	DF 9E	PAC	3									3
		BUWPS	2									
			5		2							3
	DF 1D	LANT	5			2			2			1
		BUWPS	2									
			7	2		2			2			1
	DT 33B	PAC	2									2
		RDT+E	2									2
		BUWPS	2	2								4
			6	2								
	DT 33C	RDT+E	1									1
			1									1
			46	4	4	3			3			32
DRONES PROP												
VK D	DP 2E	LANT	3				1					2
		PAC	4									4
		RDT+E	2									2
			9						1			8
	DB 26J	PAC	1									1
			1									1
	DT 28B	LANT	2			1						1
		RDT+E	4									4
		BUWPS	1	1								
			7	1		1						5
			17	1		1	1					14

* COMBAT FIRST LINE MODELS

~~CONFIDENTIAL~~

DECLASSIFIED

~~CONFIDENTIAL~~

TOTAL PROGRAM AND NON-PROGRAM AIRCRAFT

TABLE 4 LOCATION OF AIRCRAFT INVENTORY BY ORGANIZATIONAL UNIT

LOCATION	UNIT	NO. OF A/C	COM-MAND	LOCATION	UNIT	NO. OF A/C	COM-MAND	LOCATION	UNIT	NO. OF A/C	COM-MAND
ABD ALBANY	HU 4 DET 46	1	11		VA 22	13	21	ARGENTIA	VW 11	11	11
ABD ALTAIR	HU 4 DET 90	1	11		VA 23	10	21		VW 13	11	11
ABD ATKA	HU 4 DET 87	2	11		VA 25	12	21		NAVSTA	6	11
ABD AULT	VU 6 DET 14	2	11		VAH 8	9	21		FLYING CLUB	2	88
ABD BENNER	VU 3 DET 7	1	21		VFP 63 DET A	3	21	ATLANTA	NAS NART	33	50
ABD BH RCHAR	VAH 4 E	3	21	ABD MISSNEWA	HU 4 DET 96	1	11	ATSUGI	VO 1	17	21
	VF 191	14	21		VAV 11 DET A	4	21		HU 1 DET 1	5	21
	VF 194	11	21	ABD NECHES	D 1 UNT 3462	1	21		HU 1 D 1 UNT N	2	21
	VA 192	12	21	ABD NOHAMPTN	HU 4 DET 40	1	11		HU 1 UNIT 7	1	21
	VA 195	12	21	ABD NPT NEWS	HU 4 DET 44	1	11		VR 21 DET	9	21
	VA 196	12	21	ABD ORISKANY	VF 161	12	21		H6MS 11	20	29
	VAV 11 DET E	3	21		VF 162	11	21		VMF 235	21	29
ABD BOXER	HMM 264	22	19		VA 163	12	21		VMF 314	16	29
ABD BRIK SAS	VU 3 DET 9	4	21		VA 164	12	21		VMF 323	20	29
ABD BUCK	VU 3 DET 11	2	21		VA 165	12	21		VU 5	19	21
ABD BRTN ISL	HU 1 DET 41	2	21		VAH 4 G	3	21	AUSTRALIA	ATT CANBERRA	1	21
ABD CORALSEA	HU 1 D 1 UNT D	2	21		VFP 63 DET G	3	21	BALTIMORE	BWR BALTIMORE	1	31
ABD CRAIG	VU 3 DET 4	2	21		VAV 11 DET G	3	21		BWR FR	33	88
ABD EASTWIND	HU 4 DET 81	2	11		HU 1 D 1 UNT G	2	21	BARBERS PNT	VP 6	13	21
ABD ELDORADO	HU 1 UNIT 11	1	21	ABD PERKINS	VU 3 DET 3	2	21		VP 28	11	21
ABD ELLISON	VU 6 DET 18	2	11	ABD PURVIS H	VU 6 DET 3	1	11		AEWBARRONPAC	33	21
ABD EVERSOLE	VU 3 DET 6	2	21	ABD RANDOLPH	DET 15	4	11		VR 21	14	21
ABD FOX DH	VU 6 DET 12	2	11		VAV 12 DET 15	4	11		VU 1	22	21
ABD GEARING	VU 6 DET 25	2	11	ABD ROAN CH	VU 6 DET 7	2	11		NAS 14 NAVDST	22	21
ABD GLACIER	HU 4 DET 88	1	11	ABD ROOSEVLT	VFP 62 DET 42	3	11	BEAUFORT	H6MS 31	25	19
ABD HARRIS	HU 1 DET 21	1	21		VAV 12 DET 42	3	11		H6MS 32	20	19
ABD HENDERSN	VU 3 DET 8	3	21		HU 2 DET 42	3	11		VMF 251	20	19
ABD HERMITAG	HMM 262 SUB 2	8	19	ABD RUSHMORE	HU 4 DET 54	1	11		VMF 451	18	19
ABD HORNET	VAV 11 DET N	5	21	ABD SARATOGA	VFP 62 DET 60	3	11		VMA 331	21	19
	VS 35	10	21		VAV 12 DET 60	4	11		MCAS	6	39
	VS 37	10	21		HU 2 DET 60	2	11	BERMUDA	VP 49	8	11
	HS 2	16	21	ABD SHANGRLA	VF 13	14	11		NAVSTA	2	11
	VMA 214 DET N	5	29		VF 62	12	11	BETHPAGE	BETHPAGE	1	31
ABD HUNTINGT	VU 6 DET 23	2	11		VA 46	13	11		BWR RDT&E	32	70
ABD INDEPEND	VF 41	12	11		VA 106	12	11		BWR FR	22	88
	VF 84	14	11		VA 176	13	11	BLOOMFIELD	BWR RDT&E	5	70
	VA 72	12	11		VFP 62 DET 38	3	11		BWRR FR	29	88
	VA 78	12	11		HU 2 DET 38	2	11	BOSTON	CVS 18 WASP	1	11
	VA 86	12	11	ABD SPRNGFLD	HU 4 DET 41	1	11		INSMAT	1	70
	VAH 1	13	11	ABD TAUSG JK	VU 3 DET 10	2	21		ONR	1	70
	VFP 62 DET 62	3	11	ABD VOGLGSGNG	VU 6 DET 17	2	11	BRAZIL	MISSION RIO DJ	1	11
	VAV 12 DET 62	4	11	ADAK	NAVSTA 17 ND	2	21	BREMERTON	CVS 10 YORKTWN	1	21
	VAV 33 DET 62	3	11	AGANA	VAP 61	13	21		CVS 12 HORNET	1	21
	HU 2 DET 62	3	11		VW 1	8	21	BRUNSWICK	VP 10	12	11
	VMA 324	12	19		NAS	8	21		VP 11	13	11
ABD INTREPID	VAV 33 DET 11	4	11	AKRON	BWR AKRON	1	31		VP 21	11	11
ABD IWO JIMA	HMM 261	24	29	ALAMEDA	VA 52	14	21		VP 23	16	11
ABD KENDY JP	VU 6 DET 6	2	11		VA 145	12	21		VP 26	11	11
ABD KTY HAWK	VF 111	14	21		VF 151	4	21	BUENOS AIRES	NAS 1 NAV DST	5	31
	VF 114	12	21		VF 154	15	21	BURBANK	BWR BURBANK	1	31
	VA 112	13	21		VA 152	11	21		BWR RDT&E	1	70
	VA 113	13	21		VA 215	12	21		BWR FR	1	88
	VA 115	12	21		VAV 13	15	21	CAMP PENDLET	VMO 6	23	29
	VAH 13	12	21		VP 9	7	21	CECIL FIELD	VF 11	17	11
	VFP 63 DET C	3	21		VR 21 DET	13	21		VF 14	13	11
	VAV 11 DET C	4	21		NAS ALAMEDA	53	21		VA 12	13	11
	HU 1 D 1 UNT C	2	21		CVA 14 TCNDRGA	2	21		VA 172	14	11
ABD KYES JS	VU 3 DET 5	1	21		CVA 31 RICHARD	1	21		VF 31	13	11
ABD LAFFEY	VU 6 DET 10	2	11		CVA 34 ORISKNY	1	21		VF 32	17	11
ABD LARSON	VU 3 DET 2	2	21		CVA 41 MIDWAY	1	21		VA 34	13	11
ABD LIND WL	VU 6 DET 4	2	11		CVA 43 CRL SEA	1	21		VA 36	16	11
ABD MIDWAY	VF 21	11	21		CVA 61 RANGER	1	21		VF 174	34	11
	VF 24	14	21		CVA 63 KITTYHW	1	21		VA 44	47	11
					CVA 64 CONSTEL	1	21		VFP 62	13	11
					NAS 12 NAV DST	21	31		NAS 6 NAV DST	8	31
					NARTU	71	50	CHARLESTON	AD 24 EVERGLAD	2	11
					OGR BUWEPS FR	55	88	CHASE	TRARON 24	50	43
				ANDREWS	NAF ANDREWS	76	31		TRARON 25	51	43
					HQ MC FLT SECT	16	39		TRARON 26	34	43
					NARTU	42	50		NAAS NAATC	5	43
					NAF RDT&E	1	70				

~~CONFIDENTIAL~~

~~CONFIDENTIAL~~

TOTAL PROGRAM AND NON-PROGRAM AIRCRAFT

DECLASSIFIED

TABLE 4 LOCATION OF AIRCRAFT INVENTORY BY ORGANIZATIONAL UNIT

LOCATION	UNIT	NO. OF A/C	COM-MAND	LOCATION	UNIT	NO. OF A/C	COM-MAND	LOCATION	UNIT	NO. OF A/C	COM-MAND
CHERRY POINT	MAMS 27	10	19	GLENVIEW	NAS NART	67	50	LAKEHURST	HU 2	17	11
	H&MS 14	5	19	GLYNCO	NAS	92	44		HU 4	21	11
	H&MS 24	6	19		BUWEPS FLYCLUB	1	88		NAS 4 NAV DST	5	31
	VMF 115	27	19						NATECHTRAU	1	44
	VMF 531	20	19	GREECE	ATT ATHENS	1	11		NARTU	17	50
	VMA 225	22	19						NATFSI	8	70
	VMA 332	20	19	GROSSE ILE	NAS NART	38	50		FLYING CLUB	1	88
	VMCJ 2	17	19		FLYING CLUB	1	88	LANGLEY FLD	NASA	1	88
	VMGR 252	14	19	GTMO BAY	NAS GTMO BAY	6	11	LEMOORE	VA 55	12	21
	VMO 1	15	19						VA 56	14	21
	VMT 1	23	19	HYDE FLD	BUWEPS FLYCLUB	1	88		VA 93	14	21
	MCAS	2	19	INDIA	ATT NEW DELHI	1	11		DET 0	6	21
	MCAS SO6ES	10	39						VA 94	14	21
	OGR BUWEPS FR	19	88	INDIANAPOLIS	AVIONICS FAC	2	31		VA 95	12	21
	CHILE	MISSION VLPRSO	1	11	INDONESIA	ATT DJAKARTA	1	21		VA 122	35
CHINA LAKE	VX 5	16	21	INGLEWOOD	BWR RDT&E	2	70		VA 125	74	21
	NAF 11 NAV DST	3	31	IRAN	ATT TEHRAN	1	11		VA 127	21	21
	NAF RDT&E	49	70	IWAKUNI					VA 144	14	21
CHRIST CHRCH	VX 6	22	11		VP 22	11	21		VA 146	13	21
COLOMBIA	MISSION ROGOTA	1	11		VP 50	14	21		VA 153	13	21
COLORADO SPR	COMNAVCONAD	2	31		MAMS 17	15	29		VA 155	12	21
COLUMBUS	BWR COLUMBUS	2	31		H&MS 12	3	29		VA 212	14	21
	BWR RDT&E	13	70		VMA 223	24	29	LIBERIA	ATT MONROVIA	1	11
	BWR FR	10	88		VMA 242	24	29	LITCHFLD PRK	NAS LITCHFLD	1	21
CRPS CHRISTI	TRARON 28	51	43		VMCJ 1	15	29		NAF 11 NAV DST	2	31
	TRARON 29	18	43		VMGR 152	14	29		STORAGE FACLT	1681	88
	TRARON 30	28	43	JACKSONVILLE	NAMD IWAKUNI	5	21				
	TRARON 31	50	43		FLYING CLUB	1	88				
	NAS NAATC	16	43		VA 15	13	11	LONG BEACH	CVS 33 KERSRGE	1	21
FLYING CLUB	2	88		VA 35	12	11		LPH 8 VALY FRG	1	21	
CUBI PNT	VAW 13 DET I	7	21		VA 45	14	11		BWR RDT&E	4	70
	VU 5 DET A	7	21		VAP 62	12	11		BWR FR	13	88
	NAS CUBI PNT	18	21		VP 7	14	11	LOS ALAMITOS	NAS NART	82	50
	FLYING CLUB	2	88		VP 16	14	11		FLYING CLUB	2	88
DAHLGREN	NWL	1	31		VP 18	14	11	LOS ANGELES	BWR FR	1	88
					VP 45	2	11	MARIETTA	BWR FR	3	88
DALLAS	NAS NART	53	50		VP 30	19	11				
	BWR RDT&E	5	70		VU 10 DET	1	11	MAYPORT	CVA 38 SHANGRL	1	11
	BWR FR	26	88		NAS JAX	1	11		CVA 42 FDR	1	11
	FLYING CLUB	1	88		NAS 6 NAV DST	19	31		CVA 60 SARATOG	1	11
DENVER	NAVCURIT STA	1	31		NARTU	41	50		NAVSTA	4	31
					OGR BUWEPS FR	119	88	MEMPHIS	NAS	18	44
DHAHRAN AFB	HDOTRS CMEF	2	11	JOHNSVILLE	FLYING CLUB	2	88		NARTU	34	50
DOTHAN	BWR FR	19	88		FLYING CLUB	1	88		FLYING CLUB	1	88
				KANEQHE	H&MS 13	8	29	MERIDIAN	TRARON 7	60	41
ECUADOR	MISSION QUITO	1	11		VMF 212	21	29		TRARON 9	59	41
EDWARDS AFB	NLO	1	70		VMF 232	26	29		NAS NABTC	8	41
					VMA 214	24	29	MEXICO	ATT MEXICO CTY	1	11
					HMM 161	19	29	MIDWAY	NAVSTA 14 ND	4	21
EGYPT	ATT CAIRO	1	11		PMRF HAWAREA	5	21				
EL CENTRO	NPF	8	70	KEFLAVIK	MCAS 14 ND	8	29				
					VP 24 DET 13	6	11	MIRAMAR	VF 51	16	21
ELLYSON FLD	HT 8	98	41		NAVSTA	12	11		VF 53	15	21
EL SEGUNDO	BWR EL SEGUNDO	1	31	KENITRA	VR 24	7	11		VF 92	14	21
				KENT	NAF W MALLING	7	11		VF 96	12	21
EL TORO	MAMS 37	14	29	KEY WEST					VF 121	31	21
	H&MS 15	12	29		VF 101	23	11		VF 124	40	21
	H&MS 33	6	29		V5 30	22	11		VA 126	26	21
	VMF 312	18	29		H5 1	11	11		VF 142	15	21
	VMF 334	20	29		VP 21 DET 14	4	11		VF 143	16	21
	VMF 513	19	29		VX 1	13	11		VF 211	15	21
	VMF 542	4	29		NAS 6 NAV DST	6	31		VF 213	12	21
	VMA 121	20	29	KINGSVILLE	TRARON 21	47	43		VFP 63	22	21
	VMA 211	21	29		TRARON 22	50	43		VFP 63 DET E	3	21
	VMA 311	21	29		TRARON 23	34	43		NAS MIRAMAR	26	21
	VMCJ 3	24	29		NAAS NAATC	7	43		NAS 11 NAV DST	7	31
	VMGR 352	16	29	KIRTLAND AFR	NWEE	2	31		VP 19	10	21
	HMM 363	31	29		NWEE	9	70		VP 46	9	21
	HSHS AFMPAC	8	29		FLYING CLUB	2	88		VP 31 DET A	4	21
	VMT 2	26	29	KODIAK	VP 2	12	21		NAS 12 NAV DST	6	31
MCAS SO6ES	12	39		NAVSTA 17 ND	3	21	MONTEREY	NAV 12 NAVDST	45	31	
ENIWETOK	PMRF ENIWETOK	2	21	FLYING CLUB	1	88		NAV FLY CLUB	2	88	
EST HARTFORD	BWR EST HRTFRD	1	31	KWJALEIN	PMR FAC	6	21	MORROCCO	NAF KENITRA	3	11
FALLON	NAAS 12 NAVDST	4	31	LAJES	NAF	1	11	MORTON	BWR RDT&E	9	70
FUTEMA	H&MS 16	1	29	LAKE CITY	OGR BUWEPS FR	18	88		BWR FR	8	88
	HMM 364	24	29					NAHA	VP 4	12	21
	HMM 365	30	29						VU 5 DET B	5	21
	VMO 2	24	29						NAF	6	21

~~CONFIDENTIAL~~

CONFIDENTIAL

TOTAL PROGRAM AND NON-PROGRAM AIRCRAFT

TABLE 4 LOCATION OF AIRCRAFT INVENTORY BY ORGANIZATIONAL UNIT **DECLASSIFIED**

LOCATION	UNIT	NO. OF A/C	COM-MAND	LOCATION	UNIT	NO. OF A/C	COM-MAND	LOCATION	UNIT	NO. OF A/C	COM-MAND	
NAPLES	VR 24 DET	7	11	OKINAWA	NAS 5 NAV DST	11	31	SAN JUAN	VU 2 DET 32	2	11	
	NAF	15	11			MCAF FUTEMA	2	29		FLYING CLUB	1	88
	FLYING CLUB	2	88	OLATHE	NAS NART	40	50	SANTA ANA	HMM 163	30	29	
NEW IBERIA	TRARON 27	52	43	PANAMA	COM FIFTEEN	1	11		HMM 362	29	29	
	NAAS NAATC	6	43	PANAMA CITY	MINEDEFDEUV	3	70	SAUFLEY FLD	HMH 462	14	29	
NEW ORLEANS	NAS NART	54	50	PATRICK AFB	HU 4 DET 20	1	11		TRARON 1	110	41	
	FLYING CLUB	1	88	PENSACOLA	CVS 16 LXINGTN	1	11		TRARON 5	50	41	
NEWPORT	AD 19 YOSEMITE	3	11		TRARON 4	50	41		NAAS NABTC	11	41	
	CVS 39 CHMLAN	1	11		NAS NABTC	71	41	SEATTLE	NAS NART	39	50	
NEW RIVER	H&MS 26	13	19		NATECHTRAU	9	44	SEOUL	COMNAVFORKOREA	2	21	
	HMM 162	23	19		O&R BUWEP5 FR	318	88	SIGONELLA	VP 5	14	11	
	HMM 261	1	19		FLYING CLUB	2	88		NAF	4	11	
	HMM 262	21	19	PERU	MISSION LIMA	1	11	SINGAPORE	NAF AERO CLUB	1	88	
	HMM 263	23	19						ATT SINGAPORE	1	21	
	HMM 265	21	19	PHILADELPHIA	NATECHTRAU	1	44	SO AFRICA	ATT PRETORIA	1	11	
	HMH 461	13	19	PNT ARGUELLO	NMF ARGUELLO	5	21	SOWEST PAC	HMM 361	26	29	
	MCAF	4	39	POINT MUGU	VX 4	15	21	SO WEYMOUTH	NAS NART	54	50	
NEW YORK	NAS NART	59	50		PAC MISSILE RNG	16	21		FLYING CLUB	1	88	
NORFOLK	VAW 12	24	11		NAS 11 NAV DST	9	31	ST LOUIS	BWR ST LOUIS	1	31	
	VS 24	12	11		USNMC RDT&E	60	70		BWR RDT&E	2	70	
	VS 27	12	11		FLYING CLUB	1	88		BWR FR	7	88	
	HS 3	16	11	PT HUENEME	LPH 5 PRINCETN	1	21	STRATFORD	BWR RDT&E	7	70	
	VS 26	13	11		FLYING CLUB	2	88		BWR FR	11	88	
	VS 36	13	11	PTXNT RIVER	VP 8	11	11	SYRACUSE	INSMAT	1	70	
	HS 7	16	11		VP 44	9	11	TAIWAN	COMUSTDC	1	21	
	VP 56	15	11		VP 30 DET A	5	11		DET A 7TH FLT	1	21	
	HU 2 DET 1	4	11		AEWTRAUNIT	8	11		CH NAVSECMAAG	1	21	
	VRC 40	15	11		VR 1	17	11	THAILAND	NAVSEC JUSMAG	1	21	
	VU 6	3	11		NAS PTXNT RIV	12	31	TRINIDAD	NAVSTA	1	11	
	AD 18 SIERRA	1	11		NATC RDT&E	100	70	TURKEY	CNAVGR JUSMMAT	1	11	
	NAS NORFOLK	14	11	QUANTICO	HMX 1	22	39	TWIN CITIES	NAS NART	46	50	
	CVS 11 INTREPD	1	11		MCAS AES 12	16	39	VENZUELA	MISSION CARACA	1	11	
	CVA 59 FORSTAL	1	11		MCAS AES 12	2	70	VIETNAM	HEDSUCTAISAIGN	2	21	
	CVA 62 INDPEND	1	11	QUONSET PNT	VAW 33	25	11	WALTHAM	BWR	5	70	
	CVA 65 ENTERPR	1	11		VS 28	11	11		BWR FR	1	88	
	LPH 3 OKINAWA	1	11		VS 31	10	11	WHDBY ISLAND	VAH 4	8	21	
	CVS15 RANDOLPH	1	11		HS 11	16	11		VAH 6	11	21	
	LPH 4 BOXER	1	11		VS 22	12	11		VAH 123	23	21	
	LPH 6 THETIS B	1	11		VS 32	14	11		VAH 10	13	21	
	LPH 7 GUADCNAL	1	11		HS 5	11	11		VAH 2	12	21	
	HS FMFLNT	6	19		VS 34	11	11		VP 1	12	21	
	NAS 5 NAV DST	44	31		VS 39	12	11		VP 17	14	21	
	NARTU	34	50		HS 9	13	11		VP 47	13	21	
	O&R BUWEP5 FR	95	88		VS 2 DET A	2	11		NAS WHDBY IS	1	21	
	FLYING CLUB	1	88		NAS	1	11		NAS 13 NAV DST	8	31	
NORTH ISLAND	VAW 11	29	21		CVS 9 ESSEX	2	11	WHITING FLD	TRARON 2	149	41	
	VAW 11 DET B	3	21		NAS 1 NAV DST	32	31		TRARON 3	127	41	
	VAW 11 DET F	4	21		NATU	4	70		TRARON 6	37	41	
	VS 21	13	21		O&R BUWEP5 FR	113	88		NAAS NABTC	6	41	
	VS 29	13	21		REAM FIELD	VAW 11 DET O	5	21		FLYING CLUB	2	88
	VS 33	10	21			HS 6	13	21	WILLOW GROVE	NAS NART	52	50
	VS 38	10	21			HS 8	16	21		BUWEP5 FR	1	88
	VS 23	13	21			HS 4	16	21	WRGT PAT AFB	BWFLTRREP CEN	2	31
	VS 25	12	21			HS 10	11	21	YOKOSUKA	COMNAVFORJAPAN	2	21
	VS 41	16	21			HU 1	31	21	YUMA	MCAS	7	39
	VP 42	12	21			NAAS 11 NAVDST	1	31		ARTIC RES LAB	2	88
	VP 48	12	21		ROOSEVLT RDS	VP 26 DET 6	3	11		CEN AIRLINE INC	2	88
	VP 31	20	21			VW 4	8	11		DEPT OF AGRI	4	88
	VU 3	18	21			VMF 333	20	19		DEPT OF INT	1	88
	VU 7	34	21			VMA 224	22	19		DEPT OF JUSTICE	2	88
	NAS NORTH ISL	8	21			VMA 533	22	19		FED AVN AGENCY	41	88
	CVA 19 HANCOCK	1	21			VU 8	34	11		TRANS CO TEXAS	4	88
	CVS 20 BENNING	1	21			VU 10	15	11		U S ARMY	16	88
	LPH 2 IWO JIMA	1	21			NAVSTA	8	11		USAF	7	88
	NAS 11 NAV DST	33	31		ROTA	VO 2	14	11		U S CG	2	88
	O&R BUWEP5 FR	108	88			VP 24	6	11		WEATHER BUREAU	1	88
NORWAY	ATT OSLO	1	11			NAVSTA	11	11				
OAKLAND	NVHOSPFLYCLUB	1	88			NAVSTA	11	11				
OCEANA	VA 42	13	11			FLYING CLUB	2	88				
	VA 43	54	11		SANFORD	VAH 11	7	11				
	VF 33	19	11			DET 8	8	11				
	VF 102	13	11			VAH 9	9	11				
	VA 64	15	11			VAH 3	31	11				
	VA 65	12	11			VAH 7	12	11				
	VA 66	15	11			VAH 5	2	11				
	VA 76	11	11			NAS 6 NAV DST	6	31				
	VA 75	9	11		SANGLEY PNT	VP 40	14	21				
	VF 74	17	11			NAVSTA	6	21				
	VF 103	17	11									
	VA 81	11	11									
	VA 83	13	11									
	VA 85	14	11									
	VU 2	16	11									
	VU 4	16	11									
	NAS OCEANA	2	11									

10940

CONFIDENTIAL

DECLASSIFIED

~~CONFIDENTIAL~~

SECTION II AIRCRAFT INVENTORY, END OF MONTH

PROGRAM AND NON-PROGRAM AIRCRAFT

TABLE	PAGE
5 ... MAJOR PROGRAM CLASSIFICATION BY COMBAT AND NON-COMBAT TYPE AIRCRAFT	65
6 ... STATUS DISTRIBUTION BY CLASS AND COMMAND	66
7 ... PROGRAM AND NON-PROGRAM AIRCRAFT, STATUS DISTRIBUTION	67
8 ... DISTRIBUTION OF NON-PROGRAM AIRCRAFT BY MODEL	68
9 ... PROGRAM AIRCRAFT, TYPE OF ORGANIZATIONAL UNIT BY CLASS	70
10 ... PROGRAM AIRCRAFT, ATLANTIC FLEET, TYPE OF ORGANIZATIONAL UNIT BY CLASS	72
11 ... PROGRAM AIRCRAFT, PACIFIC FLEET, TYPE OF ORGANIZATIONAL UNIT BY CLASS	73

SPECIAL TABLES

12 ... DRONE AIRCRAFT BY STATUS	74
13 ... DRONE AIRCRAFT BY COMMAND	74
14 ... AIRCRAFT ON LOAN TO NAVY	74

CHARTS

1 ... AIRCRAFT INVENTORY AND PLANNED ASSIGNMENT DATA	64
2 ... MONTH-END INVENTORY OF PROGRAM AIRCRAFT BY STATUS, JUNE 1959 TO DATE	65
3 ... TOTAL NAVY PROGRAM AIRCRAFT BY ORGANIZATIONAL UNITS	71

~~CONFIDENTIAL~~

DECLASSIFIED

~~CONFIDENTIAL~~

STATUS OF NAVY AIRCRAFT INVENTORY

SCOPE OF SECTION II

Navy aircraft "inventory" is comprised of all aircraft which have been accepted, but not stricken, by the Navy. An aircraft is accepted when legal custody is assumed by the Navy, and is stricken when officially separated from Navy custody by the signature of the Deputy Chief of Naval Operations (Air) to the monthly notice "Separations From and Reinstatements To the Navy List of Aircraft".

Navy aircraft are presented under three basic classifications: STATUS, KIND OR CLASS and CONFIGURATION, and CUSTODY. "Status" refers to the classification of the functional employment or condition of aircraft; that is, generally, either undergoing, awaiting, or enroute to either operating, standard rework, special rework, storage, final disposition, or evaluation to determine next action. "Kind or Class and Configuration" refers to physical characteristics; as to general mission purpose of Navy aircraft design, e.g., fighter, attack, patrol, transport, etc. "Sub-Class" refers to the next lower level of classification into more specific mission purpose of design, e.g., all-weather, photographic, etc. "Custody" refers to organizational location; that is, administrative control of assignment, pipeline, and employment of aircraft; and, responsibility to account for and otherwise provide information about aircraft.

Included in Section II are selected inventory statistics for all Navy aircraft except guided missiles. (Aircraft on loan to Navy are included in table 13, but are excluded from all others in Section II.) Succeeding tables and listings represent successive breakdowns, in varying degree of detail, of current TOTAL INVENTORY.

GLOSSARY OF TERMS (AIRCRAFT)

TOTAL INVENTORY - Comprises all man-carrying Naval aircraft (including man-carrying drones) in the custody of all Navy and Marine organizations and units which have been accepted but not yet stricken. Total inventory may be divided into Program and Non-Program categories.

PROGRAM AIRCRAFT - Comprise all production aircraft in the physical custody of Navy and Marine units for which current or future operation within an authorized allowance is intended or can reasonably be expected. Stated differently, the program category includes operating, pipeline and reserve stock aircraft.

NON-PROGRAM AIRCRAFT - Comprise all aircraft of project development and service test (BIS) configuration, target drones (man-carrying), aircraft retired but not yet stricken (including contingency reserve), and aircraft on loan or on bailment contracts.

OPERATIONAL AIRCRAFT - This grouping includes all program aircraft in the controlling custody of the operating commands (COMNAVAIRLANT, COMNAVAIRPAC, CNATRA, CNARESTRA, NABS, and BUWEPS RDT&E) i.e., operating and operational pool aircraft.

OPERATING AIRCRAFT - are those aircraft in the custody of designated units for flight in performance of a Navy mission therefor, in accordance with, and in direct assignment against OPNAV planned operating assignments. Operating aircraft may be further classified by primary mission of unit having custody - "Combat", "Direct Combat Support", "Indirect Combat Support", "Air Training" and "Reserve (USNR-USMCR) Training".

PAR AND OPERATIONAL PIPELINE - are non-operating aircraft in custody of the operating command, i.e., aircraft in support of the operating program. These aircraft are often further classified as between "Ready For Issue" (those new or newly reworked aircraft awaiting issue to an operating unit) and "Not Ready For Issue" (aircraft in process of rework or return to BUWEPS).

NON-OPERATIONAL SUPPORT - aircraft are those in custody of BUWEPS (Fleet Readiness) for purposes of rework.

RESERVE STOCK - are program aircraft in the controlling custody of BUWEPS (FR) which are not currently and actively engaged in any of the various logistic processes (i.e., in, awaiting or enroute to operating or to rework) required in normal transition through standard service life.

CONTINGENCY RESERVE - aircraft are those which have been retired from the program inventory as a consequence of completion of standard service life but which have been retained in the inventory to alleviate mobilization deficiencies. Only those aircraft are retained in contingency reserve for which spare part support is available for at least one more Standard Rework and one more service tour/period.

ACTIVE AIRCRAFT - Operating aircraft and aircraft currently engaged in logistic support of operating aircraft.

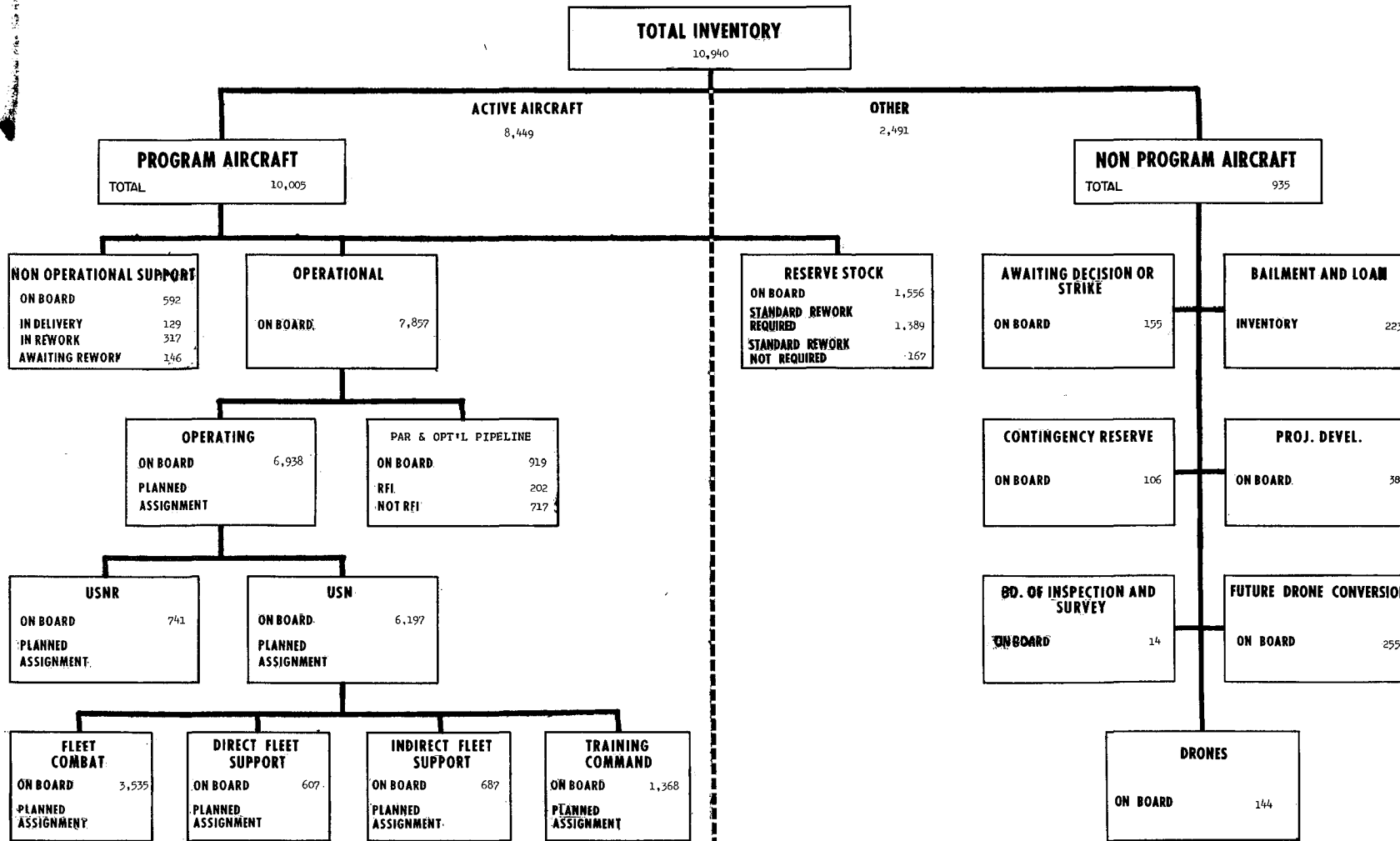
INACTIVE AIRCRAFT - Non-program and Reserve Stock aircraft.

FUTURE DRONE CONVERSION - Non-program aircraft in a Storage Facility selected for drone conversion.

~~CONFIDENTIAL~~

AIRCRAFT INVENTORY AND PLANNED ASSIGNMENT DATA

31 JANUARY 1964



NOTE: ON BOARD REPRESENTS ACTUAL NUMBER OF AIRCRAFT IN CATEGORY, AS OF 31 JANUARY 1964
PLANNED ASSIGNMENTS ARE OMITTED FROM THIS CHART PENDING PROGRAM REVIEW.

TOTAL AIRCRAFT INVENTORY

~~CONFIDENTIAL~~

TABLE 5 **MAJOR PROGRAM CLASSIFICATION BY COMBAT AND NON-COMBAT AIRCRAFT**
PROGRAM AND NON-PROGRAM

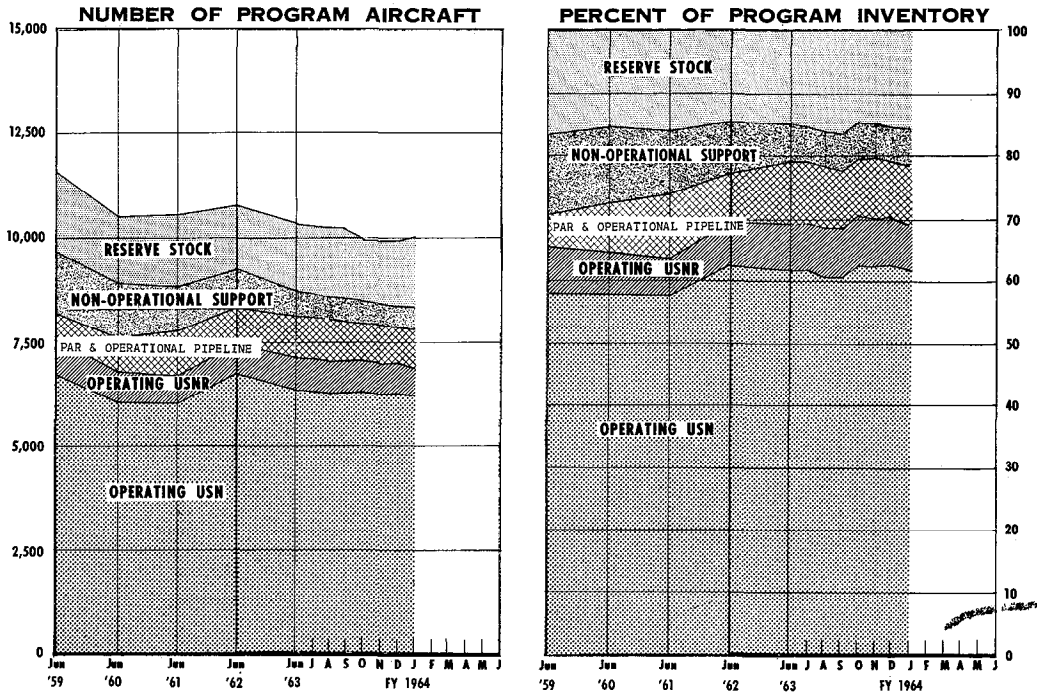
DECLASSIFIED

PROGRAM CLASSIFICATION	31 JANUARY 1964			31 DECEMBER 1963		
	TOTAL	COMBAT TYPE	NON-COMBAT TYPE	TOTAL	COMBAT TYPE	NON-COMBAT TYPE
TOTAL INVENTORY	10,940	7,394	3,546	10,908	7,379	3,529
PROGRAM AIRCRAFT	10,005	6,631	3,374	9,977	6,622	3,355
Operational	7,857	5,277	2,580	7,886	5,202	2,584
Operating	6,928	4,488	2,450	7,016	4,566	2,450
U. S. Navy	6,197	3,906	2,291	6,252	3,961	2,291
U. S. Navy Reserve	741	582	159	764	609	159
Par & Operational Pipeline	919	789	130	870	736	134
RFI	202	168	34	202	170	32
Not RFI	717	621	96	668	566	102
Non-Operational Support	592	339	253	572	342	230
Delivery	129	95	34	128	100	28
Rework	317	169	148	296	158	138
Awaiting Rework	146	75	71	148	84	64
Reserve Stock	1,356	1,015	541	1,519	978	541
Overhaul Required	1,389	864	525	1,367	840	527
Overhaul Not Required	167	151	16	152	138	14
NON-PROGRAM AIRCRAFT	935	763	172	931	757	174
Awaiting Decision or Strike	155	129	26	139	115	24
Contingency Reserve	106	89	17	120	93	27
Project Development	38	32	6	38	32	6
Bailment and Loan	223	103	120	220	106	114
Board of Insp. and Survey	14	11	3	13	10	3
Future Drone Conversion	255	255	-	257	257	-
Drones	144	144	-	144	144	-

CHART 2

TOTAL PROGRAM AIRCRAFT BY STATUS

30 JUNE 1959 TO DATE



~~CONFIDENTIAL~~

DECLASSIFIED

TABLE 6

**TOTAL AIRCRAFT INVENTORY
STATUS DISTRIBUTION BY CLASS AND COMMAND
PROGRAM AND NON-PROGRAM**

CLASS AND COMMAND	GRAND TOTAL	PROGRAM								NON - PROGRAM									
		TOTAL	OPERATING	OPERATIONAL				NON-OPERATIONAL SUPPORT				TOTAL	AWAITING DECISION OR STRIKE	CONTINGENCY RESERVE	PROJECT DEVELOPMENT	BALLMENT & LOAN	BOARD OF INSPECTION & SURVEY	FUTURE DRONE CONVERSION	DRONES
				PIPELINE		IN DELIVERY	IN REMORK	AWAITING REMORK	RESERVE STOCK										
				PAR AND OPERATIONAL PIPELINE															
				RFI s/	NOT RFI														
TOTAL	10,940	10,005	6,938	202	717	129	317	146	1,556	935	155	106	38	223	14	255	144		
Fighter	2,292	1,922	1,076	58	230	11	9	7	261	240	23	20	10	22	-	255	-		
VF(FB)JET	2,183	1,844	989	57	213	11	9	7	558	339	23	30	9	22	-	-	-		
VF(F)JET	109	108	87	1	17	-	-	-	3	1	-	-	1	-	-	-	-		
Attack	2,322	2,155	1,530	49	168	27	83	22	252	167	60	22	17	26	9	-	-		
VA(L)JET	1,376	1,326	1,015	36	130	15	4	5	121	50	22	16	10	2	7	-	-		
VA(N)JET	41	28	20	-	-	2	6	-	13	1	-	-	6	-	-	-	-		
VA(R)JET	190	175	129	1	27	-	3	1	11	15	-	-	4	11	-	-	-		
VA(F)JET	49	40	30	4	2	-	6	-	1	9	-	-	3	4	2	-	-		
VA(Q)JET	24	24	21	1	2	-	-	-	-	-	-	-	1	-	-	-	-		
VA(W)JET	30	29	22	-	3	2	1	-	1	1	-	-	-	1	-	-	-		
VA(LP)PROP	574	495	263	5	4	7	61	33	122	79	38	39	-	2	-	-	-		
VA(QM)PROP	38	30	2	-	1	2	-	-	3	-	-	-	-	-	-	-	-		
Anti-Submarine	705	654	473	13	78	5	1	8	76	51	44	4	1	2	-	-	-		
VS	705	654	473	13	78	5	1	8	76	51	44	4	1	2	-	-	-		
Patrol	663	629	478	21	77	4	27	7	45	4	-	-	3	1	-	-	-		
VP(L)	552	548	429	20	66	2	1	2	28	4	-	-	3	1	-	-	-		
VP(S)	111	111	49	1	11	2	26	5	17	-	-	-	-	-	-	-	-		
Warning	252	241	187	1	21	5	3	4	20	18	2	-	1	13	2	-	-		
VW(M)	147	131	104	1	11	5	3	4	3	16	2	-	-	1	1	2	-		
VW(H)	112	110	83	-	10	-	-	-	17	2	-	-	-	1	-	-	-		
Transport	227	223	221	6	20	9	26	2	69	24	-	-	-	24	-	-	-		
VR(H)	172	171	119	1	13	3	34	1	1	1	-	-	-	1	-	-	-		
VR(M)	310	278	175	2	4	6	21	1	69	32	-	-	-	32	-	-	-		
VR(C)	75	74	57	3	13	-	1	-	-	1	-	-	-	1	-	-	-		
In Flight Refueler ..	46	46	38	1	7	-	-	-	-	-	-	-	-	-	-	-	-		
VG	46	46	38	1	7	-	-	-	-	-	-	-	-	-	-	-	-		
Utility	184	179	131	5	4	3	10	7	19	5	4	1	-	-	-	-	-		
WU(L)	63	63	48	4	1	1	2	5	4	4	-	-	-	-	-	-	-		
WU(S)	74	70	47	1	3	1	7	-	15	4	-	-	-	-	-	-	-		
WU(M)TOW	47	46	36	-	-	2	-	-	-	1	-	1	-	-	-	-	-		
Training	2,352	2,229	1,663	14	61	17	64	22	288	100	13	1	5	31	-	-	-		
VT(AJ)JET	330	332	269	2	26	-	-	-	35	6	-	-	3	3	-	-	-		
VT(SJ)JET	511	494	352	8	31	-	8	3	92	17	11	-	2	4	-	-	-		
VT(SJ)JET	62	62	44	-	1	1	1	1	15	7	-	-	-	-	-	-	-		
VT(AF)PROP	488	486	371	3	4	2	15	15	76	2	-	-	-	2	-	-	-		
VT(BP)PROP	579	575	464	-	-	11	32	25	43	4	-	-	-	4	-	-	-		
VT(PF)PROP	332	292	147	1	-	3	8	8	123	40	-	-	-	40	-	-	-		
VT(SF)PROP	49	18	16	-	-	-	-	-	2	31	2	1	-	28	-	-	-		
Rotary Wing	1,336	1,274	965	30	37	47	62	18	115	62	9	15	1	24	3	-	-		
HS	427	413	290	12	14	8	19	5	65	14	-	1	1	12	-	-	-		
HL	116	107	79	1	2	3	5	1	16	9	1	-	-	5	3	-	-		
HM	514	489	404	12	18	22	18	5	10	25	2	14	-	9	-	-	-		
HH	35	35	27	-	-	1	3	2	4	-	-	-	-	-	-	-	-		
HG	244	230	165	5	3	13	17	5	22	14	6	-	-	8	-	-	-		
Drones	63	63	46	4	4	1	2	2	4	-	-	-	-	-	-	-	-		
VR(D)JET	46	46	32	3	3	1	1	2	4	-	-	-	-	-	-	-	-		
VR(D)PROP	17	17	14	1	1	-	-	-	-	-	-	-	-	-	-	-	-		
Drones Helo	67	-	-	-	-	-	-	-	-	67	-	-	-	10	-	-	27		
VR(S)	67	-	-	-	-	-	-	-	-	67	-	-	-	10	-	-	57		
Drones	87	-	-	-	-	-	-	-	-	87	-	-	-	-	-	-	87		
VR(K)	87	-	-	-	-	-	-	-	-	87	-	-	-	-	-	-	87		
COMMAND																			
LANT	2,188	2,145	1,818	77	220	-	-	-	43	-	-	-	-	-	-	-	43		
PAC	2,759	2,735	2,341	78	316	-	-	-	24	-	-	-	-	-	-	-	24		
NAS	491	491	481	1	9	-	-	-	-	-	-	-	-	-	-	-	-		
NATRA	1,456	1,456	1,358	7	81	-	-	-	7	-	-	-	-	-	-	-	-		
NARP	856	856	741	39	76	-	-	-	-	-	-	-	-	-	-	-	-		
RT&E	356	174	159	-	15	-	-	-	182	1	-	33	92	14	-	-	42		
BUMEPS	2,834	2,148	-	-	-	129	317	146	686	154	106	5	131	-	214	-	35		

CONFIDENTIAL

DECLASSIFIED

~~CONFIDENTIAL~~

PROGRAM AND NON-PROGRAM AIRCRAFT STATUS DISTRIBUTION

TABLE 7

YEAR	MONTH	GRAND TOTAL	PROGRAM							NON - PROGRAM									
			TOTAL	OPERATIONAL			NON-OPERATIONAL SUPPORT				RESERVE STOCK	TOTAL	AWAITING DECISION OR STRIKE	CONTINGENCY RESERVE	PROJECT DEVELOPMENT ^{b/}	BAILMENT & LOAN	BOARD OF INSPECTION & SURVEY	FUTURE DRONE CONVERSION	DRONES
				OPERATING	PAR AND OPERATIONAL PIPELINE ^{a/}		IN DELIVERY	IN REWORK	AWAITING REWORK	TOTAL									
					RFI ^{c/}	NOT RFI													
1954	30 June	16,055	14,151	9,733	1,025	-	588	847	880	1,078	1,904	1,197	-	24	118	46	-	519	
1955	30 June	17,085	14,140	9,761	667	-	612	924	857	1,319	2,945	629	1,508	18	163	46	-	581	
1956	30 June	16,400	13,003	9,687	403	-	482	981	764	686	3,397	1,722	734	9	236	57	-	639	
1957	30 June	14,289	12,434	9,421	492	-	362	718	624	817	1,855	333	870	5	270	46	-	331	
1958	30 June	12,832	11,924	8,424	198	373	259	764	515	1,391	908	280	56	58	226	29	-	259	
1959	31 March	12,295	11,607	7,657	170	452	221	690	563	1,854	688	143	9	35	235	19	-	247	
	30 June	12,373	11,297	7,562	145	462	274	617	589	1,948	776	188	14	32	212	24	-	306	
	30 September	11,991	11,296	7,277	323	498	207	624	590	1,777	695	130	27	35	197	15	-	291	
	31 December	12,054	11,257	7,064	322	456	272	552	647	1,944	797	195	44	37	182	22	-	317	
1960	31 March	11,945	11,174	6,726	363	519	304	542	611	2,109	771	213	23	36	181	13	-	305	
	30 June	11,553	10,472	6,759	299	514	286	515	490	1,609	1,081	481	89	35	183	12	-	281	
	30 September	11,594	10,411	6,665	364	590	294	543	405	1,550	1,183	599	98	35	200	17	-	274	
	31 December	11,641	10,515	6,748	349	614	235	423	454	1,692	1,126	575	33	33	210	23	-	252	
1961	31 March	11,629	10,447	6,641	296	746	182	393	458	1,731	1,182	591	76	53	206	24	-	232	
	30 June	11,649	10,502	6,682	324	715	226	415	431	1,709	1,147	566	91	57	209	17	-	207	
	30 September	11,676	10,592	6,796	306	670	201	403	488	1,728	1,084	542	65	62	205	15	-	195	
	31 December	11,736	10,625	7,045	317	603	238	421	534	1,467	1,111	574	51	61	226	15	-	184	
1962	31 March	11,801	10,662	7,247	262	645	265	366	468	1,409	1,139	619	51	58	227	13	-	171	
	30 June	11,804	10,742	7,458	228	600	220	281	389	1,556	1,062	572	61	53	220	14	-	142	
	30 September	11,755	10,678	7,199	373	657	212	305	310	1,622	1,077	608	69	50	223	18	-	109	
	31 December	11,675	10,608	7,129	336	728	185	285	307	1,638	1,067	574	87	48	225	10	-	123	
1963	31 March	11,120	10,302	7,188	280	673	142	267	355	1,397	818	392	48	45	216	3	-	114	
	30 June	11,164	10,280	7,165	301	694	106	263	227	1,524	884	435	70	41	216	8	-	114	
	30 September	11,134	10,248	7,024	247	638	129	250	203	1,697	946	426	116	42	217	8	-	137	
	31 December	10,908	9,977	7,016	202	668	128	236	148	1,519	931	339	120	38	220	13	257	144	
1964	31 January	10,940	10,005	6,938	202	717	129	317	146	1,556	935	155	106	36	223	14	255	144	

a/ "RFI" and "Not RFI" not available prior to 30 September 1957.
 b/ Included only experimental aircraft through 28 February 1958.
 c/ Includes C Status.

~~CONFIDENTIAL~~

DECLASSIFIED

~~CONFIDENTIAL~~

DISTRIBUTION OF NON-PROGRAM AIRCRAFT BY MODEL

TABLE 8

CLASS & MODEL	GRAND TOTAL	AWTG. DECL-SION OR STRIKE	MAP	CONTIN-GENCY RESERVE	RAIL-MENT	LOAN	PROJECT DEVELOP-MENT	BD. OF INSP. & SURVEY	FUTURE DRONE CONVER-SION	DRONES	CLASS & MODEL	GRAND TOTAL	AWTG. DECL-SION OR STRIKE	MAP	CONTIN-GENCY RESERVE	RAIL-MENT	LOAN	PROJECT DEVELOP-MENT	BD. OF INSP. & SURVEY	FUTURE DRONE CONVER-SION	DRONES	
Rotary Wing ..	62	9	-	15	25	11	1	3	-	-	Drones	154	-	-	-	10	-	-	-	-	-	144
HS	14	-	-	1	8	4	1	-	-	-	Vk(S)	87	-	-	-	10	-	-	-	-	-	87
SH-5A ...	7	-	-	-	7	-	-	-	-	-	QH-50C ..	67	-	-	-	10	-	-	-	-	-	57
VH-3A ...	4	-	-	-	-	4	-	-	-	-	VK(K)	87	-	-	-	-	-	-	-	-	-	87
UH-34G ..	1	-	-	-	-	-	-	-	-	-	QF-8A ...	2	-	-	-	-	-	-	-	-	-	2
NSH-34G ..	1	-	-	-	-	-	-	-	-	-	QF-96 ...	85	-	-	-	-	-	-	-	-	-	85
SH-34J ..	1	-	-	-	1	-	-	-	-	-												
HL	9	1	-	-	3	4	-	3	-	-												
JUH-1B ..	3	-	-	-	-	-	-	3	-	-												
UH-13P ..	1	1	-	-	-	-	-	-	-	-												
UH-13R ..	2	-	-	-	-	2	-	-	-	-												
TH-13W ..	3	-	-	-	1	2	-	-	-	-												
HM	25	2	-	14	9	-	-	-	-	-												
UH-19F ..	16	2	-	14	-	-	-	-	-	-												
CH-46A ..	9	-	-	-	9	-	-	-	-	-												
HG	14	6	-	-	3	3	-	-	-	-												
UH-2A ...	8	-	-	-	5	3	-	-	-	-												
CH-19E ..	3	3	-	-	-	-	-	-	-	-												
UH-25B ..	3	3	-	-	-	-	-	-	-	-												

~~CONFIDENTIAL~~

~~CONFIDENTIAL~~

DECLASSIFIED

PROGRAM AIRCRAFT INVENTORY BY TYPE OF ORGANIZATIONAL UNIT

TABLE 9

UNIT TYPE	TOTAL	CLASS OF AIRCRAFT													
		VF JET	VA JET	VA PROP	VS	VP	VW	VK	VR	VG	VU	VT JET	VT PROP	H	Z
TOTAL	10005	1952	1622	533	654	659	241	63	523	46	179	888	1371	1274	
OPERATING	6938	1076	1237	293	473	478	187	46	351	38	131	665	998	965	
PIPELINE SUPP	1511	315	251	115	105	136	34	13	103	8	29	81	127	194	
RESERVE STOCK	1556	561	134	125	76	45	20	4	69	69	19	142	246	115	
OPERATING UNITS															
FLEET COMBAT	3535	753	945	245	212	359	171		98	37	25	38	5	647	
USN	2476	491	675	244	212	359	171		70					254	
VF FB	419	419													
VA L	523	26	484	13											
VA LP	216		19	197											
VAH	132		132												
VFP PHOTO	46	46													
VAW AEW	136			34			102								
VAQ ECM	27		21				6								
VAP PHOTO	19		19												
FLT WEA SQDN	14						14								
VS	212				212										139
HS	139														
VP LAND	267					267	92			1					
VP SEA	93									16					
VR C	16														
VM HEAVY	49						49								115
HG	115														
VR TACT SUPP	55									55					
USMC	1059	262		1					28	37	25	38	5	393	
MAW HEDRONS	102	14	13	1					27			38	5	4	
VMF	221	221													
VMA	235		235												
VM GR	37										37				
VMCJ	49	27	22												
HMR LMH	354								1					350	
VMO	61										3			39	
DIR FLT SUPP	607	91	14	2	4	6		24	84		71	177	79	55	
USN	539	91	14	2	4	6		24	78		71	125	71	53	
OPTEVFOR	56	12	14	1	4	5		10	1		1	1	3	5	
VURONS	154	76		1	4	1		2	24		34	5	5	6	
FLT TRAINING	139	3						7			108	7	21		
FLT BASES	160							36			36	11	42	35	
CV + AV UTIL	30							23						7	
USMC	68							6				52	8	2	
FMF + FA+G	13							5				5	3		
VMT	45											45			
FLT BASES	10							1				2	5	2	
IND FLT SUPP	687	36	42	8	16	6	13	22	97	1	30	93	242	81	
NABS + NAS	381	4	1	2	1	1	2		52		23	75	188	32	
HMK	21													21	
BWGR + BWR	13								1			1	11		
RDT + E	159	32	41	6	8	5	5	22	8	1	1	9	4	17	
ATT + MISS	42				7		6		21		3	1	2	2	
USMCAS	71								15		3	7	37	9	
NATRA	1568	157		22	129		3		17		3	315	612	110	
BASIC	816	6			4				7		3	169	529	98	
ADVANCED	458	119		22	125				6			116	41	9	
TECHNICAL	114	32					3		4			30	42	3	
NART	741	39	236	16	112	107			55		2	42	60	72	
NON-OPERATING UNITS															
PIPELINE SUPP	1511	315	251	115	105	136	34	13	103	8	29	81	127	194	
PAR & OPT'L PIPELINE	919	288	206	11	91	98	22	8	36	8	9	67	8	67	
RFI	202	58	42	7	13	21	1	4	6	1	5	10	4	30	
NOT RFI	717	230	164	4	78	77	21	4	30	7	4	57	4	37	
NON OPTL SUPP	592	27	45	104	14	38	12	5	67		20	14	119	127	
DELIVERY	129	11	19	8	5	4	5	1	9		3	1	16	47	
REWORK	317	9	20	63	1	27	3	2	56		10	9	55	62	
AWTG REWORK	146	7	6	33	8	7	4	2	2		7	4	48	18	
RESERVE STOCK	1556	561	134	125	76	45	20	4	69		19	142	246	115	
O/H REQUIRED	1389	477	120	99	78	18	20	2	69		19	132	245	112	
NOT REQ	167	84	14	26		27		2				10	1	3	

~~CONFIDENTIAL~~

DECLASSIFIED

~~CONFIDENTIAL~~

Chart 3

TYPE OF ORGANIZATIONAL UNIT

OPERATING INVENTORY
 PLANNED ASSIGNMENT

(OPERATING INVENTORY VS PLANNED ASSIGNMENT)

NON-OPERATING INVENTORY

★ Planned Assignments of Chart 3 are omitted from this issue, except for NABS, pending program review.

OPERATING UNITS

FLEET COMBAT UNITS

CARRIER AIR WINGS

CARRIER SPECIAL SQUADRONS

ANTI-SUBMARINES SQUADRONS

PATROL SQUADRONS

MINING, AEW, BARRIER & HU SQUADRONS

VR TAG SUPP. SQDNS

MARINE COMBAT SQUADRONS

DIRECT FLEET SUPPORT

DEVELOPMENT & UTILITY SQUADRONS

AV & CV UTILITY, FLT TRAINING, & BASES OVERSEAS

MARINE FLEET SUPPORT SQUADRONS

INDIRECT FLEET SUPPORT

★ NAVY & MARINE BASES & AIR STATIONS

RESEARCH, DEVELOPMENT, TEST & EVALUATION

ATTACHES & MISSIONS; BWR

NAVAL AIR TRAINING COM

NAVAL AIR RESERVE

NON-OPERATING UNITS

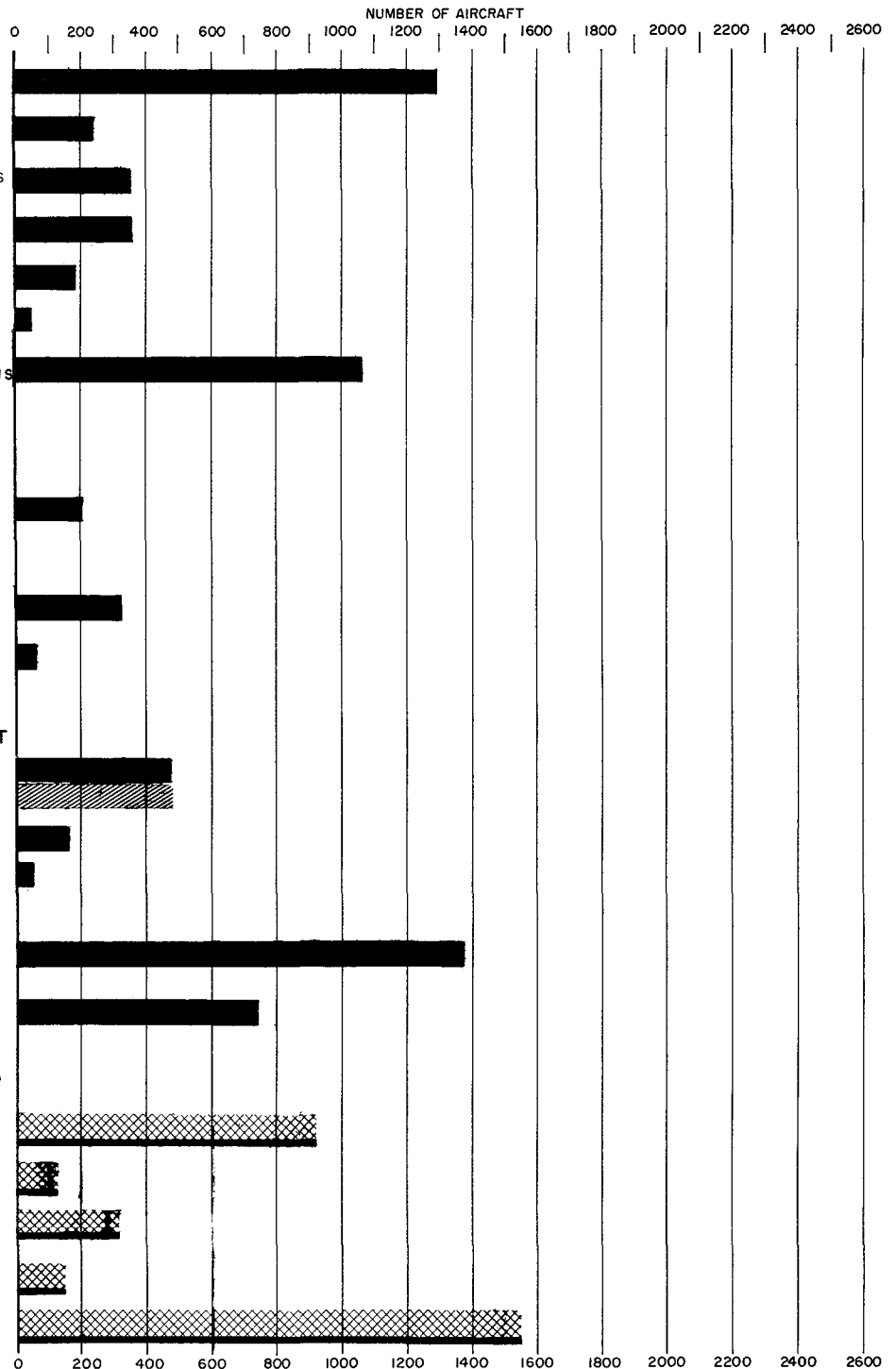
PAR & OPT'L. PIPELINE

DELIVERY

REWORK

AWAITING REWORK

RESERVE STOCK



~~CONFIDENTIAL~~

~~CONFIDENTIAL~~

DECLASSIFIED

PROGRAM AIRCRAFT INVENTORY
 BY TYPE OF ORGANIZATIONAL UNIT
 NAVAL AIR FORCE, ATLANTIC FLEET

TABLE 10

UNIT TYPE	TOTAL	CLASS OF AIRCRAFT													
		VF JET	VA JET	VA PROP	VS	VP	VW	VK	VR	VG	VU	VT JET	VT PROP	H	Z
TOTAL OPERATING	2145	444	483	93	147	222	93	18	126	14	44	104	27	330	
PAR & OPT'L PIPELINE	1848	348	425	90	122	187	81	10	110	12	38	92	27	306	
	297	96	58	3	25	35	12	8	16	2	6	12		24	
FLEET COMBAT	1568	311	425	90	118	181	81		49	12	6	14		281	
USN	1147	207	295	89	118	181	81		37					139	
VF FB	174	174													
VA L	227	14	202	11											
VA LP	84		19	65											
VAH	57		57												
VFP PHOTO	19	19													
VAW AEW	61			13				48							
VAQ ECM	12		9					3							
VAP PHOTC	8		8												
FLT WEA SQDN	8														
VS	118				118										74
HS	74														
VP LAND	167					167									
VP SEA	14					14									
VR C	16								16						
VN HEAVY	22							22							
HC	65														65
VR TACT SUPP	21														
USMC	421	104	130	1					12	12	6	14		142	
MAW HEDRONS	55	14	13	1					12			14		1	
VMF	81	81													
VMA	111		111												
VM GR	12									12					
VMCJ	15	9	6												
HMR LMH	132														132
VMO	15										6			9	
DIR FLT SUPP	260	33			4	6		10	48		29	78	27	25	
USN	235	33			4	6		10	47		29	56	25	25	
OPTEVFOR	25				4	6		10	10		1	13	9	5	
VURONS	59	33				1							16	2	
FLT TRAINING	66								3			54	9	14	
FLT BASES	71								24		15	2	16	4	
CV + AV UTIL	14								10						
USMC	25								1			22	2	2	
FMF + FAHG	5								1			2	2		
VMT	20											20			
IND FLT SUPP	20	4							13		3				
NABS + NAS	4	4													
ATT + NISS	16								13		3				
PAR & OPT'L PIPELINE	297	96	58	3	25	35	12	8	16	2	6	12		24	
RFI	77	18	11	2	4	10	1	4	2	1	5	5		14	
NOT RFI	220	78	47	1	21	25	11	4	14	1	1	7		10	

~~CONFIDENTIAL~~

DECLASSIFIED

~~CONFIDENTIAL~~

PROGRAM AIRCRAFT INVENTORY
BY TYPE OF ORGANIZATIONAL UNIT
NAVAL AIR FORCE, PACIFIC FLEET

TABLE 11

UNIT TYPE	TOTAL	CLASS OF AIRCRAFT													
		VF JET	VA JET	VA PROP	VS	VP	VW	VK	VR	VG	VU	VT JET	VT PROP	H	Z
TOTAL	2735	647	643	164	119	216	105	14	108	30	64	133	63	429	
OPERATING	2341	500	534	157	101	178	96	14	94	25	61	124	59	398	
PAR & OPT'L PIPELINE	394	147	109	7	18	38	9		14	5	3	9	4	31	
FLEET COMBAT	1967	442	520	155	94	178	90		49	25	19	24	5	366	
USN	1329	284	380	155	94	178	90		33					115	
VF FB	245	245													
VA L	296	12	282	2											
VA LP	132		132												
VAH	75		75												
VFP PHOTO	27	27													
VAM AEW	75			21			54								
VAQ ECM	15		12				3								
VAP PHOTO	11		11												
FLT MEA SQDN	6						6								
VS	94				94									65	
HS	65														
VP LAND	100					100									
VP SEA	79					78			1						
VW HEAVY	27						27							50	
HC	50														
VR TACT SUPP	32								32						
USMC	638	158	140						16	25	19	24	5	251	
MAW HEDRONS	47								15			24	5	3	
VMF	140	140													
VMA	124		124												
VM GR	25									25					
VMCJ	34	18	16												
HMR LMH	222								1					218	
VMO	46										3			30	
DIR FLT SUPP	347	58	14	2				14	36		42	99	52	30	
USN	304	58	14	2				14	31		42	69	46	28	
OPTEVFOR	31	12	14	1								1	3		
VURONS	95	43		1				14	2		21	5	5	4	
FLT TRAINING	73	3							4		54	12			
FLT BASES	89								12		21	9	26	21	
CV + AV UTIL	16								13					3	
USMC	43								5			30	6	2	
FMF + FAHG	8								4			3	1		
VMT	25											25			
FLT BASES	10								1			2	5	2	
IND FLT SUPP	27				7		6		9			1	2	2	
NABS + NAS	1								1						
ATT + MISS	26				7		6		8			1	2	2	
PAR & OPT'L PIPELINE	394	147	109	7	18	38	9		14	5	3	9	4	31	
RFI	78	34	17	5	4	7			2			2	2	5	
NOT RFI	316	113	92	2	14	31	9		12	5	3	7	2	26	

~~CONFIDENTIAL~~

~~CONFIDENTIAL~~

DECLASSIFIED

DRONE AIRCRAFT BY STATUS

TABLE 12

MODEL	TOTAL	STATUS					
		OPERATING, PAR & OPERATIONAL PIPELINE	NON OPERATIONAL SUPPORT	RESERVE STOCK	BAILMENT AND LOAN	CONTINGENCY RESERVE	AWAITING DECISION OR STRIKE
Drone ASW Helicopter	<u>67</u>	<u>55</u>	<u>2</u>	<u>-</u>	<u>10</u>	<u>-</u>	<u>-</u>
QH-50C	67	55	2	-	10	-	-
Drone (Fixed Wing)	<u>87</u>	<u>54</u>	<u>24</u>	<u>9</u>	<u>-</u>	<u>-</u>	<u>-</u>
QF-8A	2	2	-	-	-	-	-
QF-9G	85	52	24	9	-	-	-

DRONE AIRCRAFT BY COMMAND

TABLE 13

MODEL	TOTAL NUMBER OPERATING, PAR & OPERATIONAL PIPELINE	COMMAND			
		LANT	PAC	NABS	RDT&E
Drone ASW Helicopter	<u>55</u>	<u>30</u>	<u>24</u>	<u>-</u>	<u>1</u>
QH-50C	55	30	24	-	1
Drone (Fixed Wing)	<u>54</u>	<u>13</u>	<u>-</u>	<u>-</u>	<u>41</u>
QF-8A	2	-	-	-	2
QF-9G	52	13	-	-	39

AIRCRAFT ON LOAN TO NAVY

TABLE 14

MODEL	TOTAL	CUSTODIAN	LOCATION
TOTAL	10		
C-45H	1	Research, Development, Test & Evaluation	BWBR, Daingerfield
C-47D	1	Research, Development, Test & Evaluation	INA, Boston
UH-1	1	Research, Development, Test & Evaluation	USA AVSCOM Bell Plant Office, Fort Worth
UH-1B	1	Research, Development, Test & Evaluation	Patuxent River
JRF-5G	1	Research, Development, Test & Evaluation	ENR, Bethesda
HU-16B	2	Research, Development, Test & Evaluation	NAS, North Island
T-29B	2	VP-21	NAATC, Corpus Christi
C-1A	1	TRACON 29 Bureau of Naval Weapons	NAF, China Lake

~~CONFIDENTIAL~~

~~CONFIDENTIAL~~

DECLASSIFIED

AIRCRAFT MODELS

<u>CLASS</u>	<u>OLD</u>	<u>NEW</u>	<u>CLASS</u>	<u>OLD</u>	<u>NEW</u>	
VF	F8U-2	F-8C	VS	S2F-3S	S-2E	
	F8U-2N	F-8D		S2F-3	S-2D	
	F8U-2NE	F-8E		S2F-2	S-2C	
	F8U-1	F-8A		S2F-2P	RS-2C	
	F8U-1E	F-8B		S2F-1	S-2A	
	F11F-1	F-11A		S2F-1T	TS-2A	
	F9F-8	F-9J		S2F-1S	S-2B	
	F9F-8B	AF-9J		S2F-1S1	S-2F	
	F9F-7	F-9H		VP	P3V-1	P-3A
	F9F-6	F-9F			P2V-7	P-2H
	F4H-1	F-4B			P2V-7LP	LP-2J
	F4H-1F	F-4A			P2V-7S	SP-2H
	F3H-2	F-3B			P2V-6	P-2F
	F3H-2M	MF-3B			P2V-6F	P-2G
	F3H-2N	F-3C	P2V-6M		MP-2F	
	F2H-4	F-2D	P2V-6T		TP-2F	
	F2H-3	F-2C	P2V-5FE		EP-2E	
	FJ-4	F-1E	P2V-5F		P-2E	
	FJ-3	F-1C	P2V-5FS		SP-2E	
	FJ-3M	MF-1C	P2V-4		P-2D	
	F4D-1	F-6A	P5M-2		P-5B	
	F3D-2	F-10B	P5M-2S		SP-5B	
	F3D-2M	MF-10B	P5M-1		P-5A	
	F3D-1	F-10A	P5M-1S		SP-5A	
	F8U-1P	RF-8A			TP-5A	
	F9F-8P	RF-9J				
		RF-4B				
	VA	A4D-5	A-4E		VW	WF-2
		A4D-2	A-4B	W2F-1		E-2A
		A4D-2N	A-4C	AD-5W		EA-1E
		A4D-1	A-4A	WV-3		WC-121N
		FJ-4B	AF-1E	WV-2		EC-121K
		A2F-1	A-6A			NC-121K
		A3J-3	A-5C	WV-2E		EC-121L
A3J-2		A-5B	WV-2Q	EC-121M		
A3J-1		A-5A		EC-121P		
A3D-2		A-3B	VR	GV-1U		C-130F
A3D-1		A-3A		R7V-1		C-130G
		RA-5C		R6D-1		C-121J
A3D-2P		RA-3B		R6D-1Z		C-118B
A3D-1P		RA-3A		R5D-5		VC-118B
A3D-2Q		EA-3B		R5D-5R	C-54S	
		VA-3B		R5D-5Z	C-54T	
A3D-1Q		EA-3A		R5D-4R	VC-54S	
		EA-6A			C-54R	
F3D-2Q		EF-10B		R5D-3	NC-54R	
AD-7		A-1J		R5D-3Z	C-54Q	
AD-6		A-1H			VC-54Q	
AD-5		A-1E		R5D-2	C-54PQ	
		UA-1E		R5D-2Z	C-54P	
AD-5N		A-1G		R5D-1Z	VC-54P	
AJ-1		A-2A			VC-54N	
AD-5Q		EA-1F				

~~CONFIDENTIAL~~

DECLASSIFIED

<u>CLASS</u>	<u>OLD</u>	<u>NEW</u>	<u>CLASS</u>	<u>OLD</u>	<u>NEW</u>
	C-130BL	VC-54		R4D-5Q	EC-47H
	UV-1	LC-130F		R4D-5S	SC-47H
	R4Q-2	C-140C			TC-4B
	R4D-8	C-119F	H	HSS-2	SH-3A
	R4D-8L	C-117D		HSS-2Z	VH-3A
	R4D-8Z	LC-117D			RH-3A
	R4D-6	VC-117D		HSS-1	SH-34G
	R4D-6L	C-47J			UH-34G
	R4D-6R	LC-47J			SH-34H
	R4D-6Z	TC-47J		HSS-1N	SH-34J
		VC-47J			UH-34J
	R4D-5	C-47HJ			HH-13Q
	R4D-5R	C-47H		HU-1E	UH-1E
	R4D-5L	TC-47H		HUL-1	UH-13P
	R4D-5Z	LC-47H		HUL-1M	UH-13R
	R4Y-2	VC-47H		HCK-1	OH-43D
	R4Y-1	C-131G			TH-43E
	TF-1	C-131F			TH-3A
		C-1A		HTL-7	TH-13N
VG	GV-1	KC-130F		HTL-6	TH-13M
				HTL-4	TH-13L
VU	UC-1	U-11A		HUS-1	UH-34D
	UC-1	U-1B		HUS-1A	UH-34E
	L-20	U-6A		HUS-1Z	VH-34D
	OE-2	O-1C		HUS-1L	LH-34D
	OE-1	O-1B		H-34A	CH-34A
		O-1A			CH-34C
	UF-2	HU-16D		HO4S-3	UH-19F
		HU-16E			CH-53A
	SA-16B	HU-16B		HRB-1	CH-46A
		SA-16B			RA-46A
	UF-1	HU-16C			HH-19G
		LU-16C			HH-34F
	UF-1T	TU-16C		HR2S-1	CH-37C
		US-2A		HUK-1	UH-43C
		US-2C			UH-2B
		UB-26J		HU2K-1	UH-2A
				HRS-3	CH-19E
VT	F9F-8T	TF-9J		HUP-3	UH-25C
	F8U-1T	TF-8A		HUP-2	UH-25B
	T2J-2	T-2B			
	T2J-1	T-2A	VK	F8U-1D	DF-8A
	T2V-1	T-1A			DF-8F
	TV-2	T-33B		F8U-1KD	QF-8A
	A3D-2T	TA-3B		F9F-6D	DF-9F
	F3D-2T2	TF-10B		F9F-5KD	DF-9E
		T-39D		FJ-3D	DF-1C
	SNB-5	TC-45J			DF-6A
	SNB-5P	RC-45J		FJ-3D2	DF-1D
		TU-8G		TV-2D	DT-33B
		U-3		TV-2KD	DT-33C
		T-29B		P2V-5FD	DP-2E
	T-28B	T-28B		JD-1D	DB-26J
	T-28C	T-28C		T-28ED	DT-28B
	T-28A	T-28A		DSN-3	QH-50C
	T-34B	T-34B			QH-50E
	TF-1Q	EC-1A			QH-50A
	R4D-8T	TC-117D		F9F-6K2	QF-9G
	R4D-7	TC-47K		F9F-6K	QF-9F
	R4D-6Q	EC-47J		P4Y-2K	QP-4B
	R4D-6S	SC-47J			

Project Development will be prefixed with the letter N.
Board of Inspection and Survey will be prefixed with the letter J.