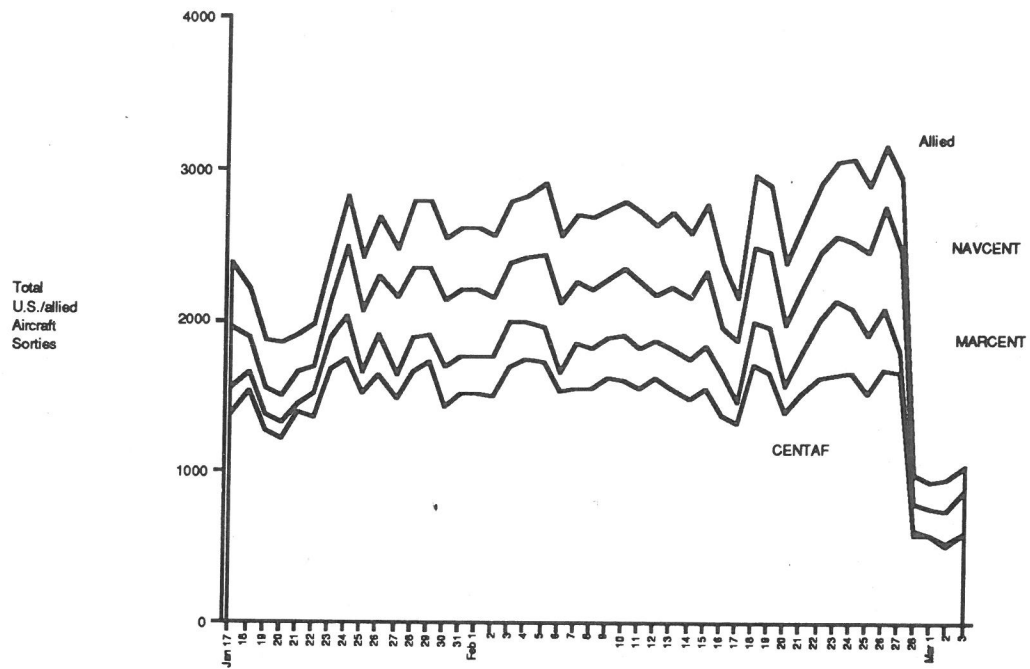


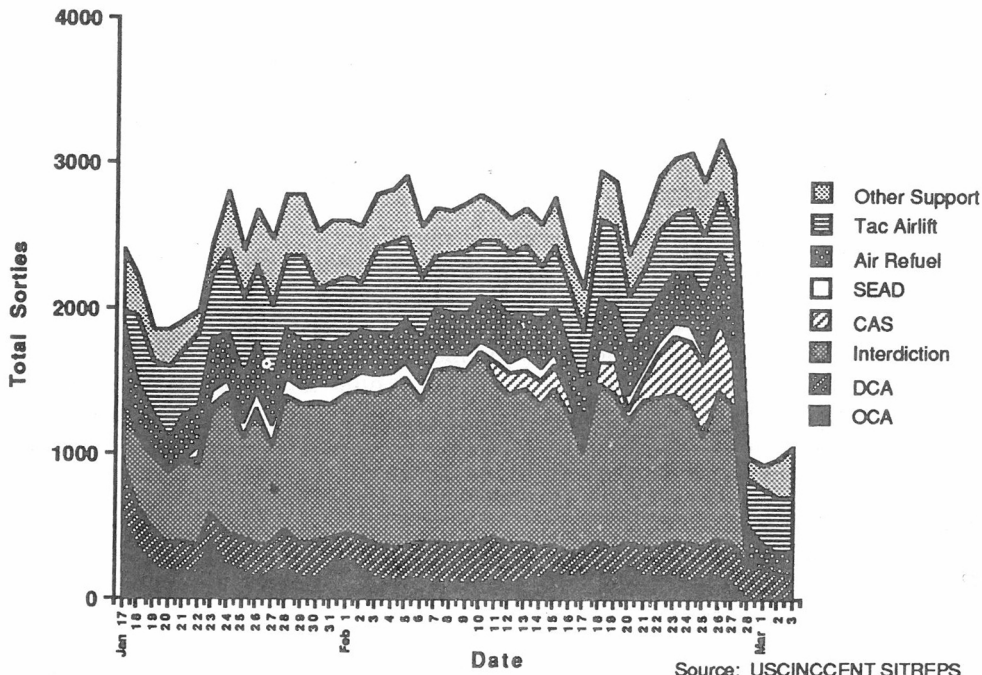
APPENDIX D
AIRCRAFT SORTIE COUNT



Date

Source: USCINCCENT SITREPS

Date	CENTAF	MARCENT	NAVCENT	Allied	Total Flown	Cum Flown
Jan 17	1381	169	415	423	2388	*
18	1529	122	233	316	2200	*
19	1275	108	178	302	1863	*
20	1273	98	175	346	1842	8323
21	1394	50	217	246	1907	10230
22	1362	149	189	282	1982	12212
23	1679	216	238	291	2424	14636
24	1741	278	455	337	2811	17447
25	1526	138	396	347	2407	19854
26	1635	266	403	368	2672	22526
27	1471	169	502	331	2473	24999
28	1670	223	452	430	2775	27774
29	1723	176	447	437	2783	30557
30	1421	262	454	401	2538	33397
31	1520	237	449	403	2609	36006
Feb 1	1522	238	447	398	2605	38611
2	1492	263	398	411	2564	41175
3	1689	301	379	407	2776	43951
4	1734	266	420	397	2817	46768
5	1729	234	470	472	2905	49673
6	1537	125	453	445	2560	52233
7	1543	308	405	434	2690	54934
8	1547	275	379	475	2676	57610
9	1619	266	393	455	2733	60343
10	1600	305	430	450	2785	63128
11	1543	272	450	446	2711	65839
12	1616	247	299	459	2621	68460
13	1542	266	416	478	2702	71162
14	1468	279	396	433	2576	73738
15	1543	284	491	451	2769	76507
16	1382	271	309	416	2378	78885
17	1320	146	397	280	2143	81028
18	1718	283	475	481	2957	83985
19	1655	303	484	440	2882	86867
20	1399	164	417	405	2385	89252
21	1511	257	435	424	2627	91879
22	1614	402	445	445	2906	94785
23	1643	484	436	478	3041	97826
24	1648	436	442	536	3062	100888
25	1518	382	556	425	2881	103769
26	1673	405	664	417	3159	106928
27	1651	147	671	471	2940	109868
28	575	30	187	200	992	110860
Mar 1	592	0	167	173	932	111792
2	515	17	215	217	964	112756
3	597	4	278	168	1047	113803



Date	OCA	DCA	Interdiction	CAS	SEAD	Air Refuel	Tac Airlift	Other Support	Total Flown	Cum Flown
Jan 17	518	415	531	67	0	362	85	420	2388	*
18	362	272	487	72	0	298	460	269	2200	*
19	216	266	497	43	0	264	346	231	1863	*
20	180	205	487	16	0	196	510	256	1842	8323
21	196	198	552	3	0	298	450	210	1907	10230
22	163	200	554	50	81	276	510	148	1982	12212
23	375	200	723	28	118	328	467	189	2424	14636
24	211	234	957	2	115	318	556	418	2811	17447
25	194	234	674	0	114	312	537	342	2407	19854
26	144	240	917	5	132	319	522	393	2672	22526
27	153	232	684	0	140	291	515	458	2473	24999
28	202	257	940	0	122	320	512	422	2775	27774
29	139	240	964	0	113	300	604	423	2783	30557
30	148	252	954	18	100	302	350	414	2538	33397
31	212	212	932	0	112	293	421	427	2609	36006
Feb 1	271	186	955	0	98	293	406	396	2605	38611
2	223	220	999	0	116	309	311	386	2564	41175
3	149	229	1043	0	120	288	589	358	2776	43951
4	131	226	1093	0	102	288	622	355	2817	46768
5	127	234	1161	0	115	289	559	420	2905	49673
6	141	247	1000	0	102	281	445	344	2560	52233
7	122	292	1176	0	95	325	366	314	2690	54934
8	114	266	1215	4	87	295	399	296	2676	57610
9	118	272	1201	0	92	287	434	329	2733	60343
10	122	272	1302	0	99	304	368	318	2785	63128
11	130	303	1077	130	94	310	422	245	2711	65839
12	109	262	1034	149	88	303	447	229	2621	68460
13	124	272	1056	132	100	297	454	260	2702	71162
14	140	222	994	160	79	314	387	280	2576	73738
15	184	199	1068	164	87	326	417	324	2769	76507
16	156	184	931	128	46	270	405	258	2378	78885
17	156	186	682	58	87	289	409	276	2143	81028
18	199	196	1097	146	110	338	538	333	2957	83985
19	155	188	1086	196	74	322	532	329	2882	86867
20	229	184	819	83	90	299	388	293	2385	89252
21	163	197	1024	138	87	309	366	343	2627	91879
22	160	202	1038	287	100	301	460	358	2906	94785
23	155	255	998	403	94	343	412	381	3041	97826
24	132	270	932	453	100	363	447	365	3062	100888
25	142	216	770	504	83	347	434	385	2881	103769
26	153	266	1026	477	75	390	400	372	3159	106928
27	110	303	920	361	83	364	418	381	2940	109868
28	0	228	34	31	2	208	319	170	992	110860
Mar 1	0	216	44	8	0	108	392	164	932	111792
2	6	181	39	17	0	92	376	253	964	112756
3	0	162	36	30	0	92	394	333	1047	113803

Statistics of Carrier Fixed-wing Flight Operations During Desert Storm

During Operation Desert Storm (from 17 January to 28 February), the six U.S. aircraft carriers deployed to the theater flew a total of 18,117 fixed-wing aircraft sorties. Of these sorties, 16,899 were combat or direct combat-support missions. The remaining 1,218 sorties included logistics flights, functional check flights for newly arrived or repaired aircraft, or other indirect support activities.

Table 1 shows the combat and combat-support sorties flown by all the carriers according to an analysis of carrier launch and recovery logs, air plans, and steam catapult logs. The number of sorties is broken out into the eight mission categories reported in the daily Central Command situation reports. These mission categories include offensive counterair (OCA), defensive counterair (DCA), interdiction, close air support (CAS), suppression of enemy air defenses (SEAD), aerial refueling, tactical airlift, and other support, including electronic support measures (ESM), electronic countermeasures (ECM), airborne early warning (AEW) and other support activities. Figure 1 shows the daily distribution of Navy sorties by mission area. Figure 2 depicts the same data in terms of the percentage of the total sorties flown in a given mission category each day.

Because the breakdown given in table 1 does not include all Navy fixed-wing sorties, and because the definition of mission categories imperfectly reflects Navy operations, table 2 employs a different set of mission categories to obtain another view of carrier activity. This set of missions includes OCA and DCA missions as defined in table 1. The theater strike mission includes interdiction, CAS, and sorties that were capable of both SEAD and strike. Maritime strike missions include armed surface combat air patrol (SUCAP) and armed reconnaissance missions (which attacked not only ships at sea but some coastal targets as well). The SEAD/EW mission includes not only SEAD missions (those armed with HARM or other air-to-surface weapons targeted against surface air defenses) but both ESM and ECM missions as well. Combat support is equivalent to the category other support in table 1. The general support category in table 2 includes logistics and other missions. A small number of sorties could not be categorized based on the information available at the time of publication. These sorties are listed as unknown. Figures 3 and 4 show the sortie breakdown in terms of numbers and percentages in a manner similar to figures 1 and 2.

Table 1. CV fixed-wing combat and combat support sorties

	17-Jan	18-Jan	19-Jan	20-Jan	21-Jan	22-Jan	23-Jan	24-Jan	25-Jan	26-Jan	27-Jan	28-Jan	29-Jan	30-Jan	31-Jan
OCA	68	39	79	50	26	45	36	46	42	30	45	75	10	13	18
DCA	122	144	54	106	93	77	94	105	103	70	97	99	94	86	99
Interdiction	91	75	74	78	79	75	82	119	91	70	89	96	106	144	139
CAS	0	0	0	0	0	1	0	0	0	0	0	0	0	5	13
SEAD	78	18	12	4	13	16	10	9	22	8	7	22	4	5	10
Aerial refuel	85	101	71	71	64	72	67	81	81	74	88	98	74	77	83
Tac airlift	0	0	0	0	0	0	0	0	0	0	0	0	0	0	0
Other support	104	58	51	54	52	68	57	74	56	54	56	62	43	52	60
Total	548	435	341	363	327	354	346	434	395	306	382	452	331	382	422

	1-Feb	2-Feb	3-Feb	4-Feb	5-Feb	6-Feb	7-Feb	8-Feb	9-Feb	10-Feb	11-Feb	12-Feb	13-Feb	14-Feb	15-Feb
OCA	19	17	28	12	34	22	31	23	29	29	44	32	35	19	25
DCA	98	72	80	102	95	65	71	74	73	73	74	59	60	73	74
Interdiction	168	102	110	141	187	106	131	124	130	145	164	112	143	141	159
CAS	2	0	0	0	0	0	0	0	0	0	0	0	0	0	0
SEAD	1	0	3	4	6	14	7	8	6	8	8	5	17	10	4
Aerial Refuel	83	66	52	57	51	49	60	62	66	61	69	48	47	53	65
Tac Airlift	0	0	0	0	0	0	0	0	0	0	0	0	0	0	0
Other support	67	54	52	60	56	57	66	62	53	58	68	78	57	59	68
Total	438	311	325	376	429	313	366	353	357	374	427	334	359	355	395

	16-Feb	17-Feb	18-Feb	19-Feb	20-Feb	21-Feb	22-Feb	23-Feb	24-Feb	25-Feb	26-Feb	27-Feb	28-Feb
OCA	39	17	41	29	22	28	22	34	60	40	49	36	6
DCA	52	86	84	85	91	91	90	36	72	75	80	100	86
Interdiction	105	117	193	206	180	197	152	198	196	261	311	293	98
CAS	0	0	0	0	0	0	0	0	0	0	0	0	0
SEAD	5	9	7	8	4	0	12	0	0	12	6	8	0
Aerial Refuel	34	50	56	56	43	53	52	50	59	75	74	66	38
Tac Airlift	0	0	0	0	0	0	0	0	0	0	0	0	0
Other support	46	48	75	76	61	72	65	66	58	61	78	74	54
Total	281	327	456	460	401	441	393	384	445	524	598	577	282

Number of sorties

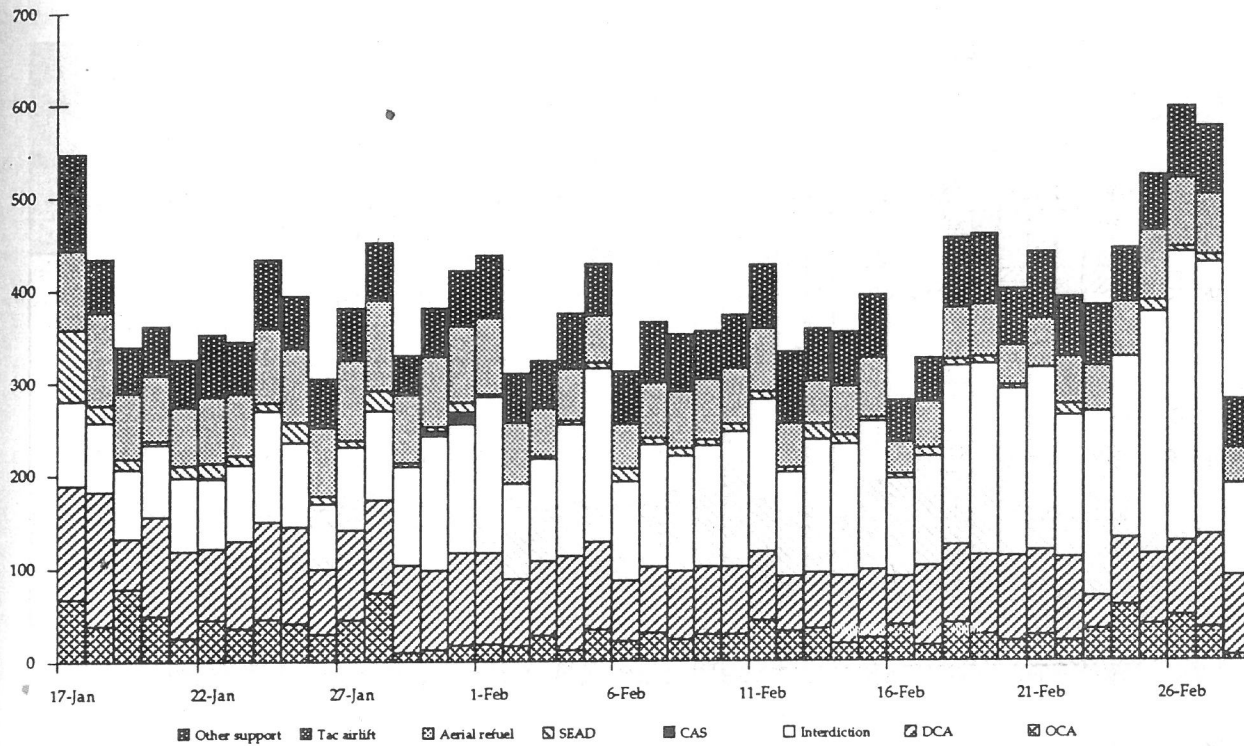


Figure 1. CV fixed-wing combat and combat-support sorties

Percent of sorties

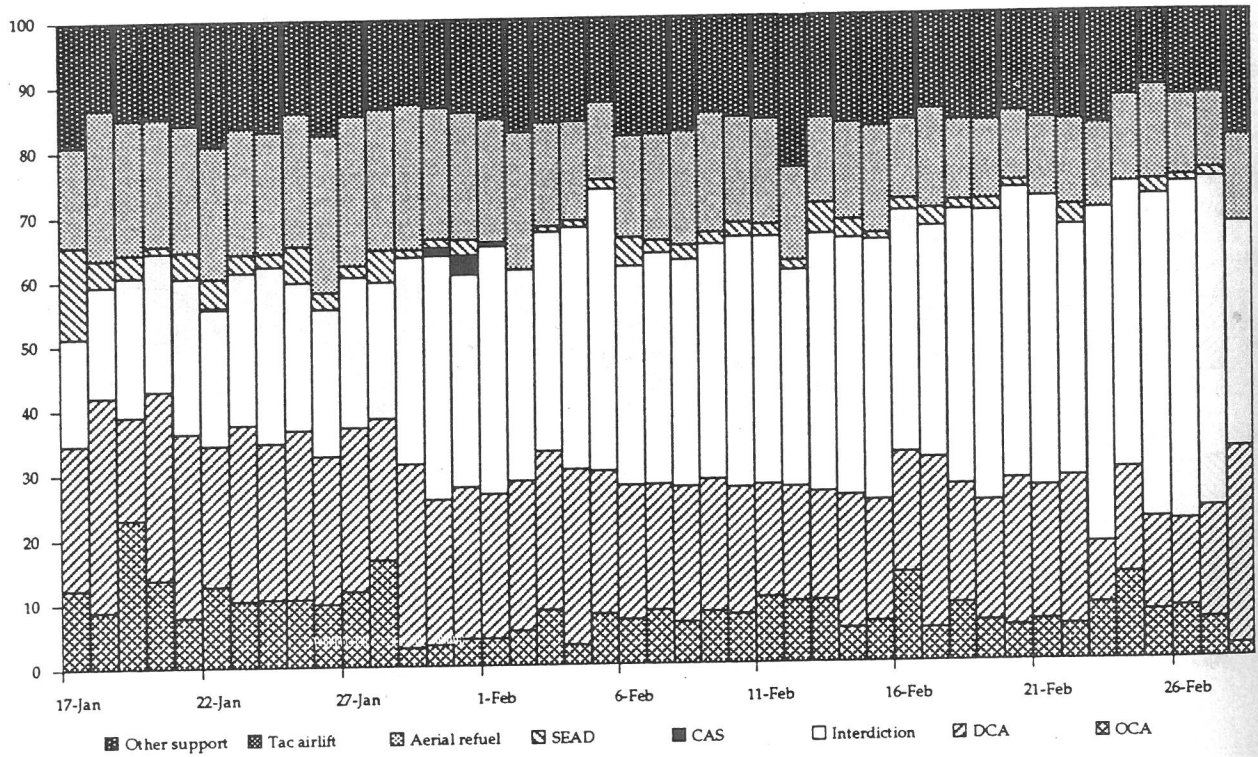


Figure 2. CV fixed-wing combat and combat-support sorties, percentiles

Table 2. Total CV fixed-wing sorties

	17-Jan	18-Jan	19-Jan	20-Jan	21-Jan	22-Jan	23-Jan	24-Jan	25-Jan	26-Jan	27-Jan	28-Jan	29-Jan	30-Jan	31-Jan
OCA	68	39	79	50	26	45	36	46	42	30	45	75	10	13	18
DCA	122	144	54	106	93	77	94	105	103	70	97	99	94	86	99
Theater strike	69	67	61	49	41	54	49	82	56	41	48	63	65	117	116
Maritime strike	22	12	20	32	38	22	33	37	35	29	41	33	41	32	36
SEAD/EW	113	37	31	26	35	41	28	34	35	24	22	41	20	23	31
Tanking	85	101	71	71	64	72	67	81	81	74	88	98	74	77	83
Combat support	69	39	32	32	30	43	39	49	43	38	41	43	27	34	39
General support	73	64	11	10	5	14	6	13	12	5	6	18	34	26	11
Unknown	8	7	2	7	5	4	4	6	35	14	14	10	6	15	9
Total	629	506	354	380	337	372	356	453	442	325	402	480	371	423	442

	1-Feb	2-Feb	3-Feb	4-Feb	5-Feb	6-Feb	7-Feb	8-Feb	9-Feb	10-Feb	11-Feb	12-Feb	13-Feb	14-Feb	15-Feb
OCA	19	17	28	12	34	22	31	23	29	29	44	32	35	19	25
DCA	98	72	80	102	95	65	71	74	73	73	74	59	60	73	74
Theater strike	136	65	81	115	159	82	104	91	102	127	145	95	123	126	143
Maritime strike	34	37	31	26	28	24	27	33	28	18	19	17	20	15	16
SEAD/EW	26	17	22	26	30	39	40	32	30	34	36	28	45	37	40
Tanking	83	66	52	57	51	49	60	62	66	61	69	48	47	53	65
Combat support	42	37	33	38	32	32	33	38	29	32	40	55	29	32	32
General support	26	12	18	12	17	11	11	18	15	7	58	56	18	15	32
Unknown	10	6	13	3	12	6	9	2	2	3	9	5	9	8	15
Total	474	329	356	391	458	330	386	373	374	384	494	395	386	378	442

	16-Feb	17-Feb	18-Feb	19-Feb	20-Feb	21-Feb	22-Feb	23-Feb	24-Feb	25-Feb	26-Feb	27-Feb	28-Feb
OCA	39	17	41	29	22	28	22	34	60	40	49	36	6
DCA	52	86	84	85	91	91	90	36	72	75	80	100	86
Theater strike	85	87	163	181	154	172	126	176	171	244	279	271	74
Maritime strike	20	30	30	25	26	25	26	22	25	17	32	23	26
SEAD/EW	26	25	45	44	32	28	41	34	26	34	37	38	21
Tanking	34	50	56	56	43	53	52	50	59	75	74	66	38
Combat support	25	32	37	40	33	44	36	32	32	39	47	44	33
General support	10	25	14	8	10	15	29	19	14	22	22	16	26
Unknown	6	2	12	3	2	9	12	10	5	11	8	13	3
Total	297	354	482	471	413	465	434	413	452	569	628	606	311

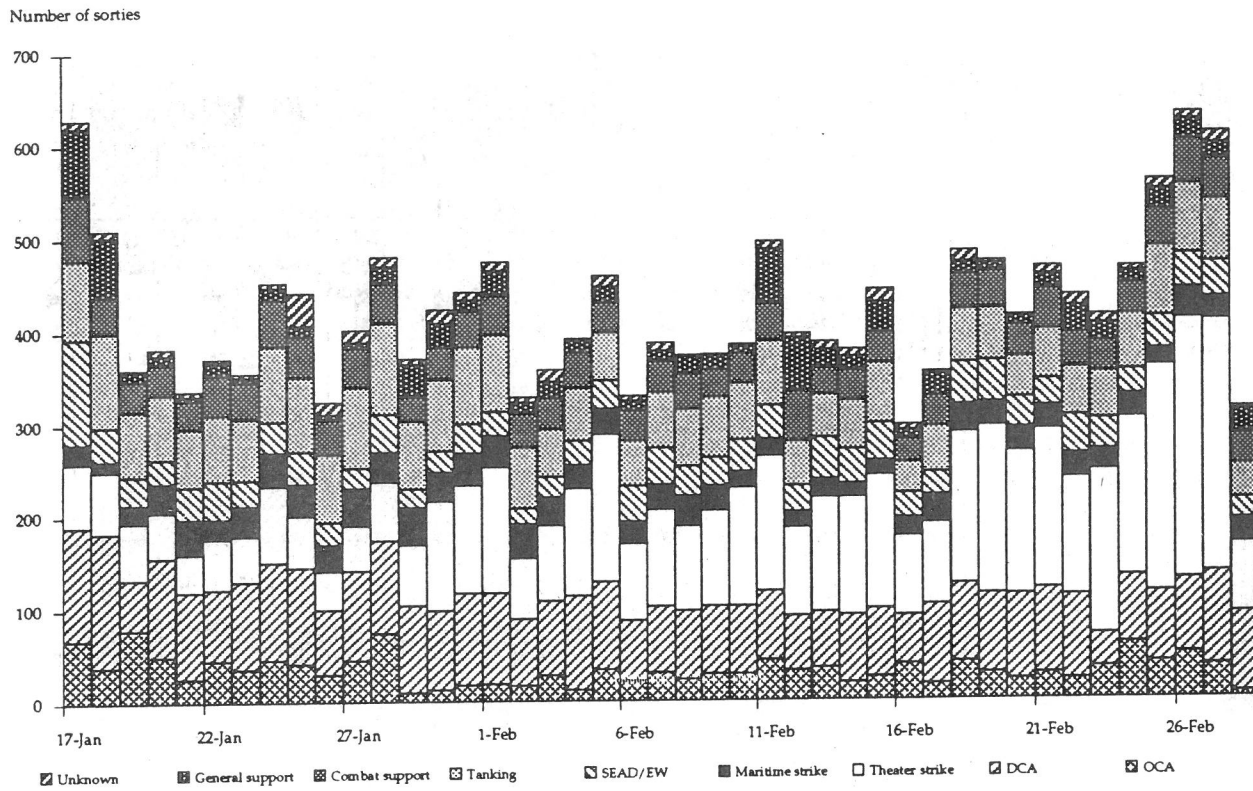


Figure 3. Total CV fixed-wing sorties

Percent of sorties

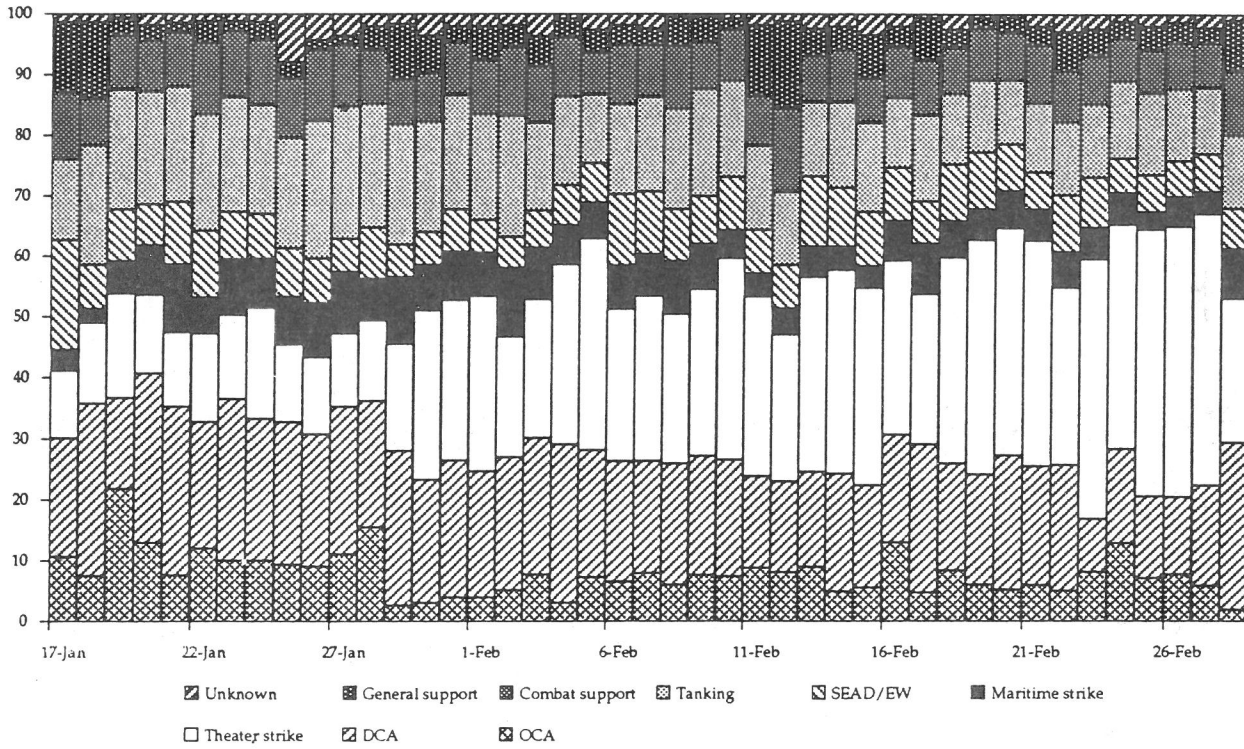


Figure 4. Total CV fixed-wing sorties, percentiles

