

How to serve your country in the

WAVES





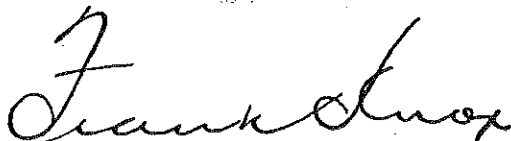
**To every woman
who wants a part in
winning this war**

Never in history have American women been offered such a chance to serve their country. Never has there been such an urgent need for their service.

This is total war—a war in which every woman as well as every man must play a part. The men in the Navy are in for one reason alone—to fight! They're in to fly the planes, man the ships, smash the Nazis and Japs.

But to keep them fighting, there are important service jobs that must be carried on at home—man-size, full-time jobs which you, the women of America, can fill—jobs in which you can serve your country in your country and release the men to fight at sea.

That is what you—as a member of the WAVES—can do to help win this war. How you can do it is explained in detail in this book. Read every word of it. Then take a step you'll be proud of all your life—volunteer for the WAVES today.



Secretary of the Navy



On duty in the radio control tower of one of the great Naval air bases. Helping to direct the take-off and landing of speedy fighters and huge 4-motored bombers, you're an integral part of Naval Aviation. And this is only one of the exciting and important jobs you may hold when you serve your country in the WAVES.

What are the WAVES?

The WAVES is an organization of women whose job is to replace Navy men at shore stations.

As a member of the WAVES, you can wear the same Navy blue, win the same ratings and earn the same pay as America's finest fighting men.

And you'll hold the same shore jobs that are now filled by men. At Navy bases throughout the continental United States WAVES do all types of office work. They also are needed to fill jobs in radio, communications, storekeeping. Some are needed for important posts in mechanics and aviation ground work—as machinists, for example, or as operators of the Link Trainer, that amazing device which teaches future Navy pilots the principles of flying. Other women are needed for various special or technical positions. Many hundreds more can render valuable service in the Navy, doing a variety of tasks which are included in the daily routine of every efficiently operated shore establishment.

Whatever your work, wherever you go, you can be sure that you are performing a very real, very vital service for your country. It won't be any picnic. It's not a part-time "glamour" job—and it's not meant to be. You are as much a member of the service as any man with the fleet. It's full-time work. It will be hard work. But as you're the sort of woman who loves America and honors the brave men fighting to keep it free, it's work you'll be proud to do.

There is a place in the WAVES for women with experience in practically every field of business and industry. Have you worked in an office as a typist, secretary, operator of business machines, filing clerk or bookkeeper? You will find ready use for your skill. Have you sold merchandise or checked stock in a store? Do you know anything about radio, telegraphy, photography? Did you ever work in a library, serve at an information desk or telephone switchboard, do tailoring or sewing? Have you a mechanical "bent"? If so, your knowledge and experience will be valuable to the Navy. And it will help you to rapid promotion and better pay.

On the other hand, suppose you have no special skill or experience. There is a place for you, too, in the Navy. If you can meet the physical and educational requirements, Navy training will take care of the rest, fit you in a short time for the post where you will be of greatest service to your country and to yourself. The following pages tell you about this training and where you will get it.

ELLEN EMERSON HOUSE



Pleasant surroundings. When you enlist in the WAVES you will be trained on a beautiful campus like this.



You will share comfortable rooms at training school. You will be responsible for keeping your own room ship-shape.



Good food and plenty of it — paid for by the Navy! No hurried drug store counter lunches for women at training school. You'll enjoy full-course meals served in the college dining hall.



Future radio operators get expert training in the Navy. Skilled instructors and the finest equipment will fit you to do a better job for your country now, land a better peacetime job later.

First, you'll receive excellent basic training

As an enlisted WAVE, you will receive four weeks of recruit training at government expense at the Naval Training School (WR) in the Bronx, New York. At the end of this time you may be ordered to active duty at once, or you may be transferred for further instruction in a special field to a naval air station, a naval hospital or one of several schools.

Typical of these are the Naval Air Stations at Norman, Oklahoma; Memphis, Tennessee; Atlanta, Georgia; and Lakehurst, New Jersey; the Naval Hospitals at Bethesda, Maryland and San Diego, California; and the campuses of Indiana University at Bloomington, Indiana; Oklahoma Agricultural and Mechanical College at Stillwater, Oklahoma; University of Wisconsin at Madison, Wisconsin; Iowa State Teachers College at Cedar Falls, Iowa; Georgia State College for Women at Milledgeville, Georgia; Miami University at Oxford, Ohio, etc. The school to which you may be assigned depends upon the type of job for which you will be trained.

You'll be a real recruit

During your indoctrination training, you'll live as a regular Navy recruit. In recruit school, your ability to take it cheerfully will be tested—to take drill, to learn Navy language and Navy ways, to serve your turn at messenger or mess detail or any other chore which must be done to make the "ship" sail smoothly.

You and your "shipmates" will share a brand new experience of study and work, and also share the thrills of donning uniform and passing in review with the colors flying.

When you step out of recruit training you'll look and act like a full-fledged seaman. You'll be "in the Navy now."



"I'm making as much money as I ever did in my office job," says former typist Sally Grant, now Yeoman Grant of the WAVES. **"My pay and allowances come to more than \$35 a week. And I'm working hard to advance my rating."**



Estelle Marshall had long been an amateur radio operator. Now her hobby fits her for one of the WAVES' most fascinating jobs. **"As a Navy radio operator,"** she says, **"I'm tuning in on history as it happens!"**



Julia Palmer is holding down a man-size job now. She had no previous experience, but she qualified for Parachute Repair work at a Navy air base. **"Thanks to my Navy training,"** she says, **"I'll rate a good job when the war is over."**



Former store buyer Helen King found her job in the WAVES made to order. **"Storekeeping may not sound exciting, but it is,"** says Storekeeper King. **"It's the job I like, and I'm proud to help my country by working at it."**

You step into an important shore job at full Navy pay

It's a real thrill when you first report for active duty. Smartly uniformed, thoroughly trained, ready to take a man's place and do a man-size job.

Perhaps you take over a Yeoman's job as secretary to a Naval Officer and release a man to serve on one of Uncle Sam's new battleships. Perhaps you get a radio position at one of the Navy's air bases, and an Aviation Radioman becomes free to fly — and fight — with the Naval air forces. Perhaps you'll be quickly assigned to active duty as a Seaman, Second Class at some shore establishment.

Whatever your job, you will carry the same responsibilities, exchange salutes and command the same respect as any other member of the uniformed forces. You'll be doing a job — not as a man or as a woman — but as an American!

Where will you serve?

Like any member of the Navy, you will be assigned to duty where you are most needed — with the exception that you will not be asked to serve outside the continental United States. Among the possibilities are Miami, San Diego, Norfolk, Washington, D. C., the Navy Yard at Boston, the air bases at Corpus Christi or Jacksonville or any other Naval shore establishment where a well-trained woman can replace a man.

You will not select the base where you will be stationed, but your request for service in a particular place will be given consideration as long as it does not conflict with the needs of the Navy.

How will you live?

Your living and eating quarters will depend upon the location at which you are stationed. In some places it is possible that you will live in barracks especially built for the purpose. In towns where there are a large number of WAVES, they will probably be housed in groups. At other places you may arrange for your own quarters. In this case you will be given an extra allowance to pay for your food and rooms.



\$200 worth of clothes free!

It's a proud moment when you first step out in brand new Navy blues! The trim uniform was especially designed by the famous stylist Mainbocher to flatter every figure and make you look—and feel—your best!

When you arrive at training school as an enlisted WAVE you will be provided with an allowance of \$200 for uniforms and other clothing. The official uniform consists of "everything that shows," except shoes and gloves. The cost—about \$180—is paid from the \$200 allowance. The balance of about \$20 is given you for shoes, underclothing and anything else you may need.

The uniform for the WAVES consists of the following articles:

- Soft crowned hat, rolled brim, black band.
- Short, Navy blue jacket, slightly built-up shoulders, new rounded collar and pointed lapel. Blue and white insignia.
- Flattering, six-gored skirt.
- Reserve blue and dark blue shirts.
- Black and reserve blue seaman's ties.
- Smart, over-the-shoulder, leather pouch bag.
- White gloves in summer, black in winter.
- Beige hisle hose.
- Black oxfords, heels not over 1½ inches.

- Raincoat and hat raincover, becoming protection for bad weather.



As an enlisted Wave you earn up to \$126 monthly — plus allowances

Many women are now earning as much money in the WAVES as they ever did in their civilian jobs. You will enlist as Apprentice Seaman at \$50 a month. And remember, that money is just your base pay, just a part of your income — because in addition, all your living expenses are paid. You'll get good food, comfortable quarters, the finest medical and dental care, and \$200 worth of clothing — all free. In cases where government facilities are not available, you'll receive, in addition to your pay, subsistence and quarters allowances totaling \$2.75 a day.

If you suffer disability or death from disease or injury while on active duty you will be entitled to all the benefits prescribed by law for civil employees of the United States. You can buy life insurance at low government rates. And, like any other member of the uniformed services, you will get the privileges of free mail, reduced rates on transportation, movie and theatre tickets where granted, and you may benefit from such organizations as USO, Red Cross, and Navy Relief.

The Navy wants you to become skilled in your job. You don't have to ask for promotion. If you are willing and able, you will be recommended for advancement. And each promotion is accompanied by a raise in pay.

The table below shows the steps by which you can advance and the base pay you'll receive as an enlisted WAVE.

SEE HOW YOUR NAVY PAY GOES UP

RATE	MONTHLY BASE PAY*
Apprentice Seaman	\$ 50
Seaman, Second Class	54
Seaman, First Class	66
Petty Officer, Third Class	78
Petty Officer, Second Class	96
Petty Officer, First Class	114
Chief Petty Officer, Acting Appointment	126

*Allowances for your food and living quarters are granted. These are both in addition to your base pay.

WOMEN'S RESERVE UNITED STATES NAVAL RESERVE
INFORMATION CONCERNING THE APTITUDE TEST

The answers to all questions and problems are to be indicated on a separate answer sheet. No credit will be given for anything written in the test booklet which contains the questions. In every case the answer is to be indicated by a heavy solid black line between the dotted lines under the correct answer given on the answer sheet which is judged to be the correct one.

Part I

For each question in Part I, several numbered answers are given. On the answer sheet the numbers are repeated. The applicant is to select the one answer which she thinks is best for each question, and then to underline the corresponding number on the answer sheet. Sample questions for Part I are:

1. The opposite of GODD is 1-beautiful 2-hopeful 3-bad 4-evil
Red (numbered 3) is most nearly opposite to GODD on the answer sheet.
2. The opposite of ACTIVE is 1-innocent 2-indifferent 3-lazy 4-quiet
Red (numbered 1) is most nearly opposite to ACTIVE on the answer sheet.
3. The opposite of PROFOUND is 1-spherical 2-spherical 3-spherical 4-spherical
Red (numbered 1) is most nearly opposite to PROFOUND on the answer sheet.

Sample question from the aptitude test required of all WAVES. If you have had two years of high school or business school, you should pass easily. No advanced preparation required.

It's a proud moment when you raise your right hand and swear allegiance to your country. From then on, you step into a new life—in the service of Uncle Sam!



Can you meet these requirements?

Here are the requirements for enlisted women.

Check your qualifications against them.

TERM OF ENLISTMENT — You will enlist for the duration of the war. You will be discharged within six months after the war ends.

CITIZENSHIP — You must be a native-born American, or if you are not native-born, you or your parents must have naturalization papers. You must show written proof of citizenship when you apply.

AGE — On the date of enlistment, you must be at least 20 years old and not yet have reached your 36th birthday. If you are under 21, you must have the written consent of your parents or guardian.

MARRIAGE — A married woman may enlist in the WAVES, provided her husband is not in the same branch of the service. You may not marry during the training period. However, after training is over there are no marriage restrictions whatever.

DEPENDENTS — Women with children under 18 will not be accepted for enlistment in the WAVES.

CHARACTER — The Navy wants women of good character. When you enlist, you will be asked to furnish 3 references.

EDUCATION — You must have two years of high school or business school.

EXPERIENCE — You will be asked to submit a record of your occupation since leaving school.

PHYSICAL — With your completed application blank you must fill out a form which will give your complete health record.

HEIGHT — You must be at least 5 feet.

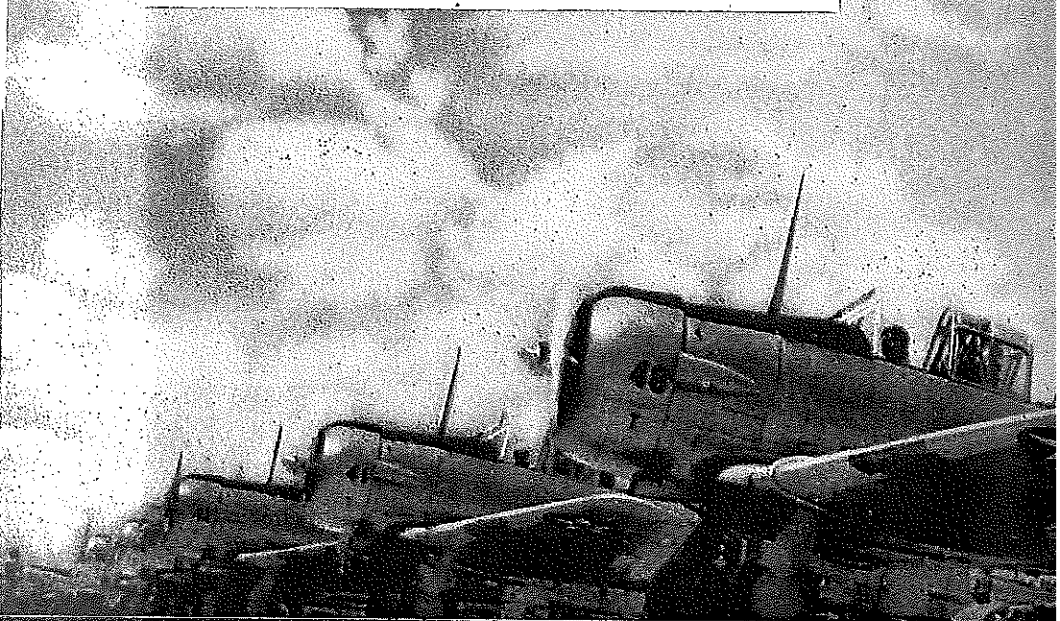
WEIGHT — You must weigh at least 95 pounds, and your weight must be in proportion to your general body build.

EYES — Each eye must be correctable with glasses to 20/20 vision.

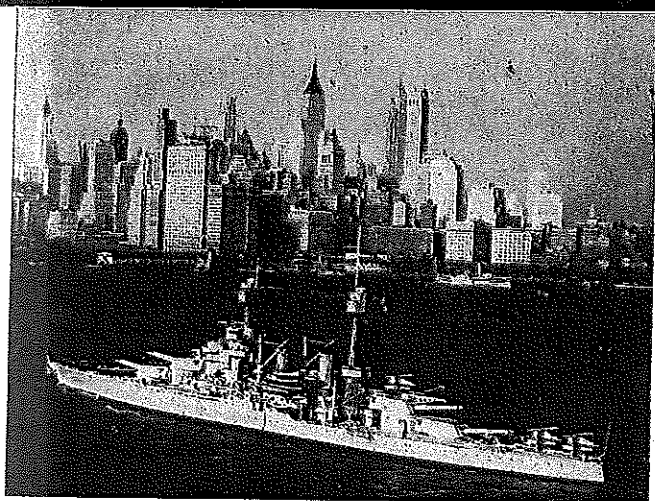
HEARING — You must be able to distinguish whispered words at 15 feet.

TEETH — Natural teeth must be in sound condition, or you must have satisfactory replacements.

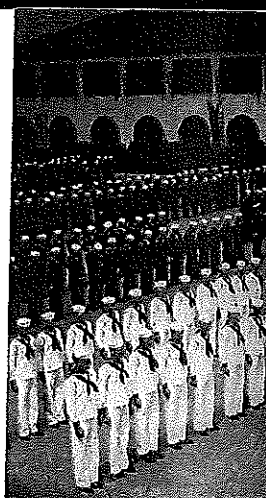
Jacksonville, Florida — one of the newest and greatest of Navy air bases. Here are trained thousands of Navy fliers — men who'll wear the Navy "Wings of Gold" — heroes who are writing a glorious new chapter in American battle history.



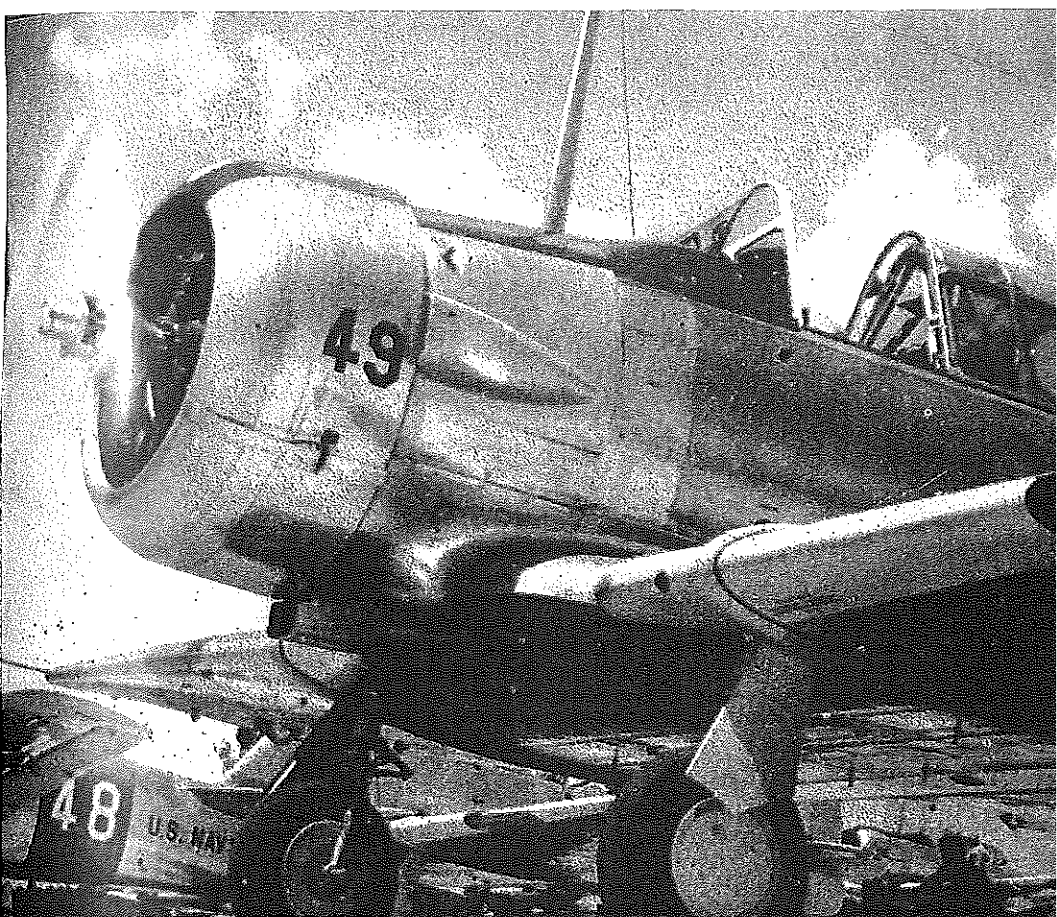
YOU MAY BE ASSIGNED TO ACTIVE DU



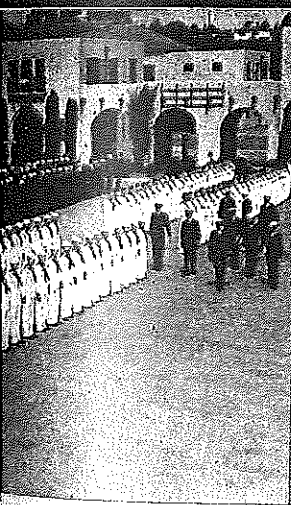
New York City — an exciting place to work — an exciting place to live. Headquarters of the Third Naval District are located here, with offices in one of Manhattan's most famed skyscrapers.



San Diego Naval Base — One of the busiest and it's the base from which way to fight the Japs.



AT ONE OF THESE GREAT NAVY CENTERS



Sunny Southern California.
important of Pacific ports,
s and men set sail on their



Washington, D. C. — the nation's capital and the heart of America's war effort. Here are made the decisions, from here flash the orders that send our fleets into action in every part of the world.

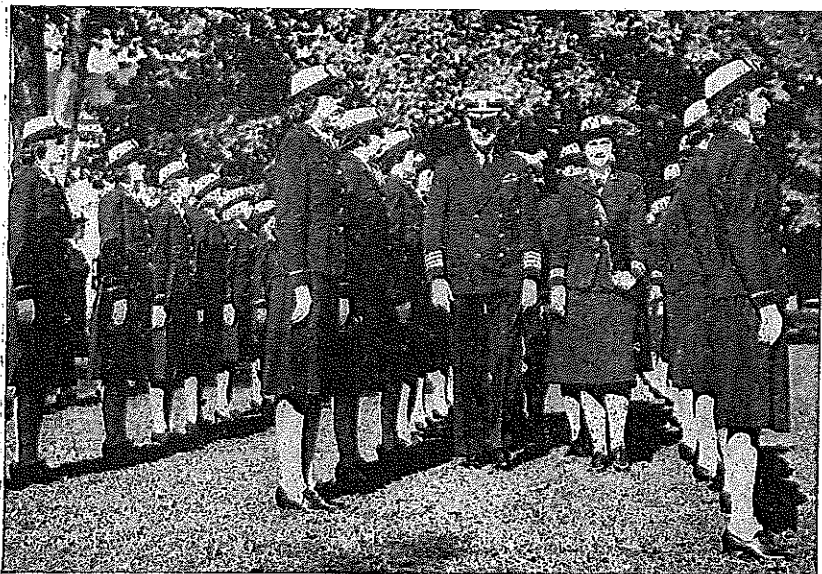
Officers in the WAVES



College women can earn commissions in the WAVES. Most of them will qualify as Ensigns. A limited number (as specified by Act of Congress) can become Lieutenants (Junior Grade) and Lieutenants (Senior Grade). They will draw the same pay and allowances as men Officers of equivalent rank in the Navy. Uniforms for Officers will be the same as for the enlisted personnel except for the Officers' hat, gold buttons, white dress shirt and the reserve blue stripes designating their rank.

Officers in the WAVES will hold responsible positions. Previous experience in any of many different fields will be a valuable asset to the Officer candidate, but it is not by any means a "must" requirement. The chief qualifications, in addition to at least two years of college training, are alertness, energy, integrity, leadership qualities—and above all, the urge to serve your country.

Women who have had business experience in the fields of banking, retailing, insurance, manufacturing, etc., and those who are executives, accountants, statisticians, buyers, personnel officers,



WAVE OFFICERS present a picture of military snap and precision as they undergo inspection following graduation from the indoctrination course.

been engaged in civil life. Also needed are women who have had technical training and practical experience in engineering, communications, electronics, physics, radio and similar fields.

WAVE officer candidates take their indoctrination either at Smith College, Northampton, Mass., or at Mount Holyoke College, South Hadley, Mass. All candidates enter as Apprentice Seamen. They continue in this status for one month and then qualify as Reserve Midshipmen. At this point a division takes place. Those being trained for general duty must complete a second month of advanced indoctrination. Those selected for special duty enter upon a seven weeks' course of study in their specialty. Upon the successful completion of their respective training, they are commissioned and ordered to duty.

Requirements for Officers

Candidates for commissions in the WAVES must meet the same requirements as enlisted women except in 3 respects:

AGE—At date of enlistment, 20 to 49 inclusive.

EDUCATION—College degree or two years of college work plus at least two years of acceptable business or professional experience. Also two years of mathematics in high school or college.

PHYSICAL—Same as for enlisted women with these two exceptions:

1. Eyes: Minimum vision in each eye 12/20, corrected to 20/20.
2. Teeth: Minimum of 18 sound teeth, with at least 2 molars opposing on each side and 4 opposing front teeth.

For an application blank for a commission in the WAVES, write to the nearest Navy Recruiting Station or Office of Naval Officer Procurement listed on the last pages of this booklet. Or if there is an office close by, you may call in person. With your request enclose the following information: (1) age and date of birth; (2) education; (3) marital status; (4) the number and ages of your children; (5) husband's occupation.

ENLISTED WOMEN MAY BECOME OFFICERS. The only way a non-college woman can win a commission in the WAVES is to come up "through the ranks." Not many will qualify. It calls for hard work and real ability, but it is a goal well worth trying for.

What happens when I join the Waves?



1. First, go or write to the nearest Navy Recruiting Station or Office of Naval Officer Procurement for application blanks. Give the information required, and return papers to office of origin.



2. If your application papers are satisfactory, you'll receive free transportation to the nearest Office of Naval Officer Procurement. There you'll be interviewed and arrange to take the aptitude test.



3. Then comes a physical check-up by Navy doctors. Requirements are thorough but not too difficult. Any young woman in sound health should be able to pass the examination with flying colors.



4. It's a thrilling moment when you raise your right hand and are "sworn in." From then on you're in the service of Uncle Sam, ready to do a man-size job for your country!



5. Off for training school! The Navy takes care of all expenses. Meals in the dining car. A Pullman berth for overnight travel. And you'll find comfortable quarters ready for you when you arrive.



6. Yes, it's really you! You'll feel proud—and rightly so—when you first see yourself in trim Navy blues. Complete outfit—\$200 worth of clothing—is furnished you free as an enlisted woman.



7. Training schools are located at some of the country's finest colleges. Typing, radio operation, communications, mechanics are only some of the skills you may acquire.



8. At training school you'll follow an interesting schedule. Athletics, games, recreation with friendly companions are yours to enjoy in addition to the valuable training under expert Navy teachers.



9. And now—a full-fledged member of the service—you go on active duty at one of the big Naval bases. You'll be in the thick of all that's exciting and important in America at war.



10. Yes, your salute will be recognized even by an Admiral. And you deserve recognition! For yours is a big job—a service to your country you will be proud of the rest of your life.

Any questions about Waves?

You'll find the answers here

- Q.** As a WAVE will I be expected to serve overseas?
- A.** The law passed by Congress limits your service to the continental limits of the United States.
- Q.** What is the term of enlistment?
- A.** For the duration of the war. You will be discharged within six months after the war ends.
- Q.** After I have once joined, may I resign?
- A.** A letter to your Commanding Officer, requesting discharge and stating your reason, will be forwarded for consideration. But in wartime resignations are discouraged.
- Q.** If I am under 20 and my parents consent, can I enlist?
- A.** No. By law the minimum age is 20.
- Q.** If I should fail the aptitude test, can I take it again?
- A.** No.
- Q.** If I have no special training, will I be eligible?
- A.** Yes. In addition to women with specialized training, the WAVES definitely want women of high calibre but no special training.
- Q.** Am I on active duty as soon as I am sworn in?
- A.** Not necessarily. You may be told to report home on inactive duty to await further orders or be ordered to proceed to a training school immediately.
- Q.** When does my pay begin?
- A.** The day you report to training school.
- Q.** Should I quit my old job as soon as I am sworn in?
- A.** No. Do not resign until you are ordered to training school.
- Q.** Must all enlisted women start as Apprentice Seamen?
- A.** Yes. But after successfully completing the basic training you become a Seaman, Second Class. If you are selected for further training at a specialist school you may receive a rating before being assigned to your first job. From then on, your promotion depends on your ability and length of service.
- Q.** May I later change the type of work I am doing?
- A.** You may submit a request to your Commanding Officer to be forwarded for consideration.
- Q.** Do I pay my own way to training school?
- A.** No. Your transportation is paid by the Navy.
- Q.** How long will my training period be?
- A.** Recruit training lasts about one month and you may be ordered to a shore station immediately after that.
- Q.** Can an enlisted woman request training in a particular field—for instance, radio—even if she has had no previous training in that field?
- A.** Yes. But it cannot be guaranteed that the request will be granted.
- Q.** When do I get my uniform?
- A.** After you arrive at training school. However, you should bring enough civilian clothing for a week or two.
- Q.** What will my hours be at training school?
- A.** The hours will depend on the school you attend. However, they will be on a military basis. Reveille, taps, etc.
- Q.** Will I learn military drill?
- A.** Yes.
- Q.** Will there be organized exercise?
- A.** Yes. There will be a physical director at each school, and the athletic program will be keyed to the type of work you will do.

- Q. Will there be religious services?
- A. Yes. Each training school will make appropriate arrangements.
- Q. Am I allowed to have dates during training?
- A. Yes. You may have dates during your free time.
- Q. Will I get week-end leaves from training school?
- A. Yes, at the discretion of the Commanding Officer.
- Q. Will I be subject to military discipline after training?
- A. The extent of discipline depends on where you are stationed and what sort of work you are doing. Obviously, those living in barracks will be subject to more discipline than those living alone.
- Q. What about working hours, leaves, dates after training?
- A. All these will be determined by the work you are doing and the post where you are stationed.
- Q. What supervision will there be over my living quarters?
- A. Wherever WAVES live in groups, they will be adequately supervised, and proper living standards will be maintained. Where girls live individually, the Navy will recommend suitable quarters.
- Q. Will I be permitted to marry after the training period?
- A. Yes, without any restriction. If you become pregnant, you will be honorably discharged.
- Q. May I request duty at any particular Naval Station?
- A. Yes, but your request may or may not be granted.
- Q. As an enlisted woman, will I be subject to the same rules and regulations as an enlisted Navy man?
- A. Yes.
- Q. Will I get the same pay?
- A. Yes.
- Q. Can I buy life insurance at the same low rates as Navy men?
- A. Yes.
- Q. Will I get free mail privileges, discounts on transportation, movies, etc.? Will I benefit from USO, Red Cross, Navy Relief, etc.?
- A. Yes, on the same basis as male members of the armed services.
- Q. May I wear make-up?
- A. Yes, a reasonable amount.
- Q. Must hair be cut short or worn in any particular style?
- A. You may wear it in any style that is becoming to you, but it should be short enough not to cover your collar.
- Q. If I do not receive an application blank immediately after writing a letter for one, does it mean I am rejected?
- A. No. Every effort will be made to send blanks out as soon as letters are received. If you do not receive yours within a week, telephone or write, stating the case.
- Q. If I'm not asked to come in for an aptitude test, does it mean I am rejected?
- A. No. Even though you are qualified, there may not be a position open at the moment which can properly utilize your talents. You will be asked to come in for an aptitude test as soon as the need for your services develops.
- Q. What papers would it be helpful for a candidate to start obtaining as soon as she decides she would like to join the WAVES?
- A. 1. Evidence of citizenship—birth or baptismal certificate.
 2. Transcript of your educational record.
 3. Record of occupation since leaving school.
 4. Three letters of recommendation from prominent citizens who know you.
 5. Marriage certificate, if married. Divorce papers, if divorced.

Q. Can an enlisted woman ever work up to a commission?

A. Yes. Your application will be judged on demonstrated capacity, educational qualifications, length of service and ability.

Q. What is the pay scale for Officers?

A. Ensign: \$150.00 base pay and allowances, amounting in all to about \$216.00 a month.

Lieutenant (Junior Grade): \$166.67 base pay and allowances, amounting in all to about \$247.00 a month.

Lieutenant (Senior Grade): \$200.00 base pay and allowances, amounting in all to about \$296.00 a month.

Q. How much are Officers allowed for uniforms?

A. \$250.

Q. What is the difference between the uniform of an enlisted woman and that of an Officer?

A. Little difference—except for hat, shirt, gold buttons instead of blue, and officer stripes on sleeves. Officers wear white shirts for dress, blue for work. Enlisted women wear reserve blue or dark blue shirts. In summer both Officers and enlisted women wear white shirts.

Q. Could I qualify for a commission with only two or three years of college work?

A. Yes, provided you have also had exceptional experience in administrative, executive or technical work. But you must have had at least two years of college.

Q. If an Officer Candidate fails to complete her training period successfully, will she be transferred to the regular enlisted ranks or discharged?

A. She may have her option.

How to apply for the Waves

1. First, go in person or write to the nearest Navy Recruiting Station (see pages 21-22-23-24) and ask for WAVES application blanks. Or, if more convenient, you may go or write to the nearest Office of Naval Officer Procurement listed on page 25.
2. When you apply, be sure to give the following information: (a) your age and date of birth; (b) your education; (c) your marital status — married, unmarried, widowed, divorced; (d) if you have any children, how many and the age of each; (e) if you are married, your husband's occupation.
3. If you appear to qualify on the basis of the information you give, you will receive an official application blank and other necessary papers. Fill in all the information requested about your qualifications, get your 3 character references and your properly filled out health report form and return all papers to the office from which you secured them.
4. If your application is accepted, you will be sent — with transportation paid — to the nearest Office of Naval Officer Procurement for an interview, aptitude test and your Navy physical examination. If you pass these successfully, you will be sworn in — ready to serve your country and release a man to fight at sea. If you fail, transportation will be paid to your home.

Call or write for your application blank at nearest office listed on the following pages:

Find your nearest Navy Recruiting Station on this list

FIRST INDUCTION AREA

BOSTON, MASS. New Court House & Post Office Bldg., Post Office Square
 Attleboro, Mass. Post Office Bldg.
 Brockton, Mass. Post Office Bldg. Annex
 Fall River, Mass. Post Office Bldg.
 Framingham, Mass. Post Office Bldg.
 Haverhill, Mass. Post Office Bldg.
 Lawrence, Mass. Post Office Bldg.
 Lowell, Mass. New Post Office Bldg. East Merrimack St.
 Lynn, Mass. Main Post Office Bldg.
 New Bedford, Mass. Parcel Post Bldg.
 Salem, Mass. Post Office Bldg.

MANCHESTER, N. H. Beacon Bldg. 814 Elm St.
 Claremont, N. H. Post Office Bldg.
 Nashua, N. H. City Hall

NEW HAVEN, CONN. Chamber of Commerce Bldg., 185 Church St.
 Bridgeport, Conn. Post Office Bldg.
 Danbury, Conn. State Armory
 Hartford, Conn. Post Office & Court House Church & High Sts.
 New London, Conn. Post Office Bldg.
 Norwich, Conn. Post Office Bldg.
 South Norwalk, Conn. Post Office Bldg.
 Torrington, Conn. Post Office Bldg.
 Waterbury, Conn. Post Office Bldg.

PORTLAND, ME. Federal Court House Annex, 76-78 Pearl St.
 Auburn, Me. County Court House
 Augusta, Me. 253 Water St.
 Bangor, Me. Post Office Bldg. Post Office Square

PROVIDENCE, R. I. Old Industrial Trust Bldg., 49 Westminster St.
 Newport, R. I. Post Office Bldg.
 Pawtucket, R. I. Post Office Bldg.
 Westerly, R. I. State Armory
 West Warwick, R. I. Post Office Bldg.
 Woonsocket, R. I. Post Office Bldg.

SPRINGFIELD, MASS. Post Office Bldg. Dwight St., between Lyman & Taylor
 Bellows Falls, Vt. Post Office Bldg.
 Burlington, Vt. Police Station
 Fitchburg, Mass. Post Office Bldg.
 Greenfield, Mass. Post Office Bldg.
 Montpelier, Vt. Post Office Bldg.
 Pittsfield, Mass. Post Office Bldg.
 Rutland, Vt. Post Office Bldg., West St.
 Worcester, Mass. Post Office Bldg.

SECOND INDUCTION AREA

ALBANY, N. Y. P. O. Bldg., Broadway
 Binghamton, N. Y. Post Office Bldg. Henry St.
 Glens Falls, N. Y. WPA Bldg.
 Poughkeepsie, N. Y. New Post Office Bldg.
 Schenectady, N. Y. New Post Office Bldg.
 Syracuse, N. Y. Post Office Bldg. Clinton Square
 Troy, N. Y. Rensselaer Co. Court House
 Utica, N. Y. Federal Bldg. Broad & John Sts.
 Watertown, N. Y. Post Office Bldg.

BUFFALO, N. Y. Post Office Bldg. Ellicott, Swan & Oak Sts.
 Batavia, N. Y. County Court House
 Elmira, N. Y. Post Office Bldg.
 Jamestown, N. Y. Post Office Bldg.
 Niagara Falls, N. Y. Post Office Bldg.
 Olean, N. Y. Post Office Bldg.
 Rochester, N. Y. Post Office Bldg. Church & Fitzhugh Sts.

NEW YORK, N. Y. 383 Madison Ave.
 Atlantic City, N. J. Post Office Bldg.
 Bronx, N. Y. 8th Regiment Armory
 Brooklyn, N. Y. Federal Bldg.
 Camden, N. J. 157th Field Artillery Armory 9th St. & Wright Ave.
 Jamaica, N. Y. Post Office Bldg.
 Jersey City, N. J. Post Office Bldg.
 Long Island City, N. Y. Post Office Bldg.
 Newark, N. J. Post Office Bldg.
 New Brunswick, N. J. Post Office Bldg.
 Newburgh, N. Y. Post Office Bldg.
 Paterson, N. J. Post Office Bldg.
 Phillipsburg, N. J. Post Office Bldg.
 St. George, S. I., N. Y. Post Office Bldg.
 Trenton, N. J. Post Office Bldg.
 White Plains, N. Y. Post Office Bldg.
 Wilmington, Del. Post Office Bldg.
 Yonkers, N. Y. Post Office Bldg.

THIRD INDUCTION AREA

BALTIMORE, MD. Post Office Bldg. Calvert & Fayette Sts.
 Cumberland, Md. Post Office & Court House
 Hagerstown, Md. City Hall Bldg.
 Salisbury, Md. Post Office Bldg.

PHILADELPHIA, PA. Blackburn Bldg. 13 S. 13th St.
 Allentown, Pa. Post Office Bldg. 5th & Hamilton Sts.
 Chester, Pa. Post Office Bldg.
 Harrisburg, Pa. Post Office Bldg. Walnut & 3rd Sts.
 Lancaster, Pa. Post Office Bldg.
 Reading, Pa. Post Office Bldg.
 Scranton, Pa. U. S. Court House & Post Office Bldg.
 Wilkes-Barre, Pa. Post Office Bldg. Main & South Sts.
 Williamsport, Pa. Post Office Bldg.
 York, Pa. Post Office Bldg.

PITTSBURGH, PA. Old Federal Bldg. 306 Smithfield St.
 Altoona, Pa. Post Office Bldg. 1200-14 Eleventh Ave.
 Dubois, Pa. Post Office Bldg.
 Erie, Pa. Court House State St. & S. Perry Square
 Greensburg, Pa. Post Office Bldg. Pennsylvania Ave.
 Johnstown, Pa. New Post Office Bldg.
 Newcastle, Pa. New Federal Bldg.
 Untiontown, Pa. Post Office Bldg.

RICHMOND, VA. Parcel Post Bldg. 11th & Main Sts. 53 Piedmont St.
 Bristol, Va. Post Office Bldg.
 Danville, Va. Post Office Bldg.
 Lynchburg, Va. Post Office Bldg.
 Newport News, Va. City Armory
 Norfolk, Va. Post Office Bldg.
 Petersburg, Va. Post Office Bldg.
 Roanoke, Va. Post Office Bldg. Church & Commerce Sts.
 Staunton, Va. Post Office Bldg.

WASHINGTON, D. C. City Club Bldg. 1320 G St., N. W.

FOURTH INDUCTION AREA

BIRMINGHAM, ALA. Post Office & Court House Bldg., 5th Ave., North bet. 18th & 19th Sts.
 Anniston, Ala. Post Office Bldg.
 Bessemer, Ala. City Hall
 Dothan, Ala. Post Office & Court House
 Evergreen, Ala. Jones & Deming Bldg.
 Florence, Ala. Post Office Bldg.

Gadsden, Ala. Post Office Bldg.
Huntsville, Ala. Post Office Bldg.
Mobile, Ala. Court & Customs House Bldg.
Montgomery, Ala. Post Office Bldg.
Opelika, Ala. Post Office Bldg.
Tuscaloosa, Ala. Post Office Bldg.

COLUMBIA, S. C. First Nat'l Bank Bldg.
1210 Washington St.
Charleston, S. C. County Center Bldg.
Columbia, S. C. City Hall
Conway, S. C. County Office Bldg.
Florence, S. C. Post Office Bldg.
Greenville, S. C. P. O. Bldg. & Court House
Greenwood, S. C. P. O. Bldg. & Court House
Rock Hill, S. C. Post Office Bldg.
Spartanburg, S. C. 194½ E. Main St.
Spartanburg, S. C. Post Office Bldg.

JACKSON, MISS. Post Office Bldg.
East Capitol & South West Sts.
Greenville, Miss. Public Library Bldg.
Greenwood, Miss. Post Office Bldg.
Gulfport, Miss. Hatten Bldg.
Hattiesburg, Miss. Sam Miller Bldg.
305 McCleod St.
Meridian, Miss. Post Office Bldg.
Natchez, Miss. Post Office Bldg.
Tupelo, Miss. City-County Office Bldg.

JACKSONVILLE, FLA. Post Office Bldg.
311 W. Monroe St.
Gainesville, Fla. Post Office Bldg.
Marianna, Fla. Post Office Bldg.
Orlando, Fla. Post Office Bldg.
Pensacola, Fla. Post Office Bldg.
St. Petersburg, Fla. Chamber of Com. Bldg.
Tallahassee, Fla. Post Office Bldg.
Tampa, Fla. Post Office Bldg.

MACON, GA. Post Office Bldg.
Mulberry & Third Sts.
Albany, Ga. Post Office Bldg.
Athens, Ga. New Post Office Bldg.
Atlanta, Ga. New Post Office Bldg.
Forsyth & Hunter Sts.
Augusta, Ga. Post Office Bldg.
Columbus, Ga. Post Office Bldg.
12th St. & 2nd Ave.
La Grange, Ga. 112 Hines St.
Rome, Ga. Post Office Bldg.
Savannah, Ga. Post Office Bldg.
Valdosta, Ga. Post Office Bldg.

MEMPHIS, TENN. Falls Bldg.
24-26 North Front St.
Dyersburg, Tenn. Post Office Bldg.
Jackson, Tenn. New Post Office Bldg.
Union City, Tenn. Post Office Bldg.

MIAMI, FLA. Postal Bldg.
327 N. E. First Ave.
Ft. Lauderdale, Fla. 315 S. Andrews Ave.
Ft. Myers, Fla. Post Office Bldg.
Key West, Fla. Post Office Bldg.
West Palm Beach, Fla. Post Office Bldg.

NASHVILLE, TENN. U. S. Court House
Broad St. & 8th Ave.
Chattanooga, Tenn. New Federal Bldg.
9th St. & Georgia Ave.
Cookeville, Tenn. Court House & Post Office
Johnson City, Tenn. New Post Office Bldg.
Kingsport, Tenn. Post Office Bldg.
Knoxville, Tenn. Post Office Bldg.
McMinnville, Tenn. Post Office Bldg.
Morristown, Tenn. Post Office Bldg.
Pulaski, Tenn. Post Office Bldg.

RALEIGH, N. C. Federal Bldg.
Fayetteville & Martin Sts.
Asheville, N. C. Post Office Bldg.
Charlotte, N. C. Post Office Bldg.
Greensboro, N. C. Post Office Bldg.
New Bern, N. C. Post Office Bldg.
Salisbury, N. C. Post Office Bldg.
Wilmington, N. C. Post Office Bldg.
Winston-Salem, N. C. Post Office Bldg.

FIFTH INDUCTION AREA

CINCINNATI, OHIO Court House & Post
Office Bldg., Government Square
Dayton, Ohio Post Office Bldg.
Portsmouth, Ohio Post Office Bldg.
Springfield, Ohio Post Office Bldg.

CLEVELAND, OHIO Old Post Office
Bldg., E. 2nd & Superior Sts.
Akron, Ohio New Post Office Bldg.
168 E. Market St.
Ashtabula, Ohio Post Office Bldg.
Canton, Ohio Post Office Bldg.
Lorain, Ohio Post Office Bldg.
Mansfield, Ohio Post Office Bldg.
Sandusky, Ohio Post Office Bldg.
Steubenville, Ohio P. O. & Court House
Youngstown, Ohio Post Office Bldg.

COLUMBUS, OHIO Old Post Office Bldg.
Third & State Sts.
Athens, Ohio Post Office Bldg.
Cambridge, Ohio Post Office Bldg.
Chillicothe, Ohio 43 N. Fourth St.
Zanesville, Ohio Zanesville Municipal
Auditorium

HUNTINGTON, W. VA. Post Office Bldg.
Fifth Ave.
Beckley, W. Va. Post Office Bldg.
Bluefield, W. Va. Post Office Bldg.
Charleston, W. Va. Post Office Annex
Clarksburg, W. Va. Post Office Bldg.
500 W. Pike St.
Elkins, W. Va. Post Office Bldg.
Fairmont, W. Va. Post Office Bldg. &
Court House
Martinsburg, W. Va. Post Office Bldg.
Parkersburg, W. Va. Old Federal Bldg.
Wheeling, W. Va. Post Office Bldg.

INDIANAPOLIS, IND. Post Office Bldg.
Ohio & North Pennsylvania Sts.
Bloomington, Ind. Post Office Bldg.
Columbus, Ind. Post Office Bldg.
Evansville, Ind. Post Office Bldg.
2nd & Sycamore Sts.
Port Wayne, Ind. Post Office Bldg.
Gary, Ind. Post Office Bldg.
Kokomo, Ind. Post Office Bldg.
Lafayette, Ind. Post Office Bldg.
Marion, Ind. Post Office Bldg.
Muncie, Ind. Post Office Bldg.
Richmond, Ind. Colonial Bldg.
Salem, Ind. Post Office Bldg.
South Bend, Ind. Federal Bldg.
Terre Haute, Ind. Post Office Bldg.
Vincennes, Ind. Post Office Bldg.

LOUISVILLE, KY. Post Office Bldg.
7th & Broadway
Ashland, Ky. Post Office Bldg.
Bowling Green, Ky. Post Office Bldg.
Covington, Ky. Post Office Bldg.
Danville, Ky. Post Office Bldg.
Frankfort, Ky. Post Office Bldg.
Hopkinsville, Ky. Post Office Bldg.
Lexington, Ky. Post Office Bldg.
Middlesboro, Ky. Post Office Bldg.
Owensboro, Ky. Post Office Bldg.
Paducah, Ky. New Post Office Bldg.
Somerset, Ky. City Hall

TOLEDO, OHIO Commercial Bldg.
713 Adams St.
Defiance, Ohio 410½ Clinton St.
Findlay, Ohio Post Office Bldg.
Fremont, Ohio Post Office Bldg.
Lima, Ohio Post Office Bldg.
Marion, Ohio 196 S. Main St.

SIXTH INDUCTION AREA

CHICAGO, ILL. Plymouth Court Bldg.
321 South Plymouth Court
Aurora, Ill. New Post Office Bldg.
Peoria, Ill. Post Office Bldg.
Monroe & Main Sts.
Quincy, Ill. Post Office Bldg.
Rockford, Ill. Post Office Bldg.
Rock Island, Ill. Post Office Bldg.

DETROIT, MICH. New Federal Bldg.
 Fort & Shelby Sts.
 Alpena, Mich. Post Office Bldg.
 Benton Harbor, Mich. Post Office Bldg.
 East Grand Rapids, Mich. Naval Armory
 Escanaba, Mich. Post Office Bldg.
 Flint, Mich. Post Office Bldg.
 Jackson, Mich. New Post Office Bldg.
 Kalamazoo, Mich. New Post Office Bldg.
 Lansing, Mich. New Post Office Bldg.
 Marquette, Mich. Federal Bldg.
 Pontiac, Mich. Y. M. C. A. Bldg.
 Port Huron, Mich. Federal Bldg.
 Royal Oak, Mich. Post Office Bldg.
 Saginaw, Mich. New Federal Bldg.
 Traverse City, Mich. Post Office Bldg.

MILWAUKEE, WIS. Plankinton Bldg.
 161 West Wisconsin Ave.
 Chippewa Falls, Wis. Post Office Bldg.
 Green Bay, Wis. Federal Bldg.
 LaCrosse, Wis. Federal Bldg.
 Madison, Wis. Post Office & Court House
 Oshkosh, Wis. Federal Bldg.
 Racine, Wis. Post Office Bldg.
 Wausau, Wis. Post Office Bldg.

SPRINGFIELD, ILL. State Register Bldg.
 613 East Monroe St.
 Champaign, Ill. Post Office Bldg.
 Effingham, Ill. County Court House
 Marion, Ill. Post Office Bldg.

SEVENTH INDUCTION AREA

CHEYENNE, WYO. 2000 Capitol Ave.
 Casper, Wyo. Post Office Bldg.
 Rock Springs, Wyo. City Hall
 Sheridan, Wyo. Post Office Bldg.

DENVER, COLO. U. S. Customs House
 19th & California Sts.
 Colorado Springs, Colo. Post Office Bldg.
 Durango, Colo. Post Office Bldg.
 Grand Junction, Colo. Post Office Bldg.
 Greeley, Colo. Post Office Bldg.
 Pueblo, Colo. Post Office Bldg.
 Sterling, Colo. Federal Bldg.

DES MOINES, IOWA Old Post Office
 Bldg., 5th & Court Sts.
 Burlington, Iowa Post Office Bldg.
 Carroll, Iowa Carroll City Hall
 Cedar Rapids, Iowa Post Office Bldg.
 Council Bluffs, Iowa Post Office Bldg.
 Creston, Iowa Post Office Bldg.
 Davenport, Iowa New Federal Bldg.
 Decorah, Iowa Winneskiek Co. Court House
 Dubuque, Iowa Post Office Bldg.
 Fort Dodge, Iowa Post Office Bldg.
 Mason City, Iowa Post Office Bldg.
 Ottumwa, Iowa Federal Bldg.
 Sioux City, Iowa Post Office & Court House
 Spencer, Iowa County Court House
 Waterloo, Iowa Post Office & Court House

KANSAS CITY, MO. U. S. Court House
 9th & Grand Sts.
 Chillicothe, Mo. Post Office & Court House
 Dodge City, Kan. Post Office Bldg.
 Garden City, Kan. Post Office Bldg.
 Hutchinson, Kan. Post Office Bldg.
 Joplin, Mo. Post Office Bldg.
 St. Joseph, Mo. Court House & P. O. Bldg.
 Salina, Kan. New Post Office Bldg.
 Topeka, Kan. Post Office Bldg.
 Wichita, Kan. Post Office Bldg.

MINNEAPOLIS, MINN. Federal Office
 Bldg., Washington & 2nd Ave., South
 Bismarck, N. D. Post Office & Court House
 Brainerd, Minn. 415 S. Sixth St.
 Crookston, Minn. 102 W. Second St.
 Devil's Lake, N. D. Memorial Bldg.
 Dickinson, N. D. Post Office Bldg.
 Duluth, Minn. New Federal Bldg.

Eveleth, Minn. Post Office Bldg.
 Fargo, N. D. Post Office Bldg.
 Fergus Falls, Minn. P. O. & Court House
 Grand Forks, N. D. Post Office Bldg.
 Hibbing, Minn. Village Hall
 Jamestown, N. D. Post Office Bldg.
 Mankato, Minn. Post Office & Court House
 Minot, N. D. Post Office & Court House
 Montevideo, Minn. Post Office Bldg.
 Rochester, Minn. Post Office Bldg.
 St. Cloud, Minn. Post Office Bldg.
 St. Paul, Minn. Uptown Station &
 Federal Courts Bldg.
 Wahpeton, N. D. Post Office Bldg.
 Williston, N. D. Post Office Bldg.

OMAHA, NEBR. Baird Bldg.
 1704 Douglas St.
 Aberdeen, S. D. Post Office & Court House
 Beatrice, Nebr. Post Office Bldg.
 Deadwood, S. D. Post Office Bldg.
 Falls City, Nebr. Post Office Bldg.
 Fremont, Nebr. Post Office Bldg.
 Hastings, Nebr. Post Office Bldg.
 Huron, S. D. Post Office Bldg.
 Lincoln, Nebr. Post Office Bldg.
 McCook, Nebr. Red Willow Co. Court House
 Mitchell, S. D. Post Office Bldg.
 Nebraska City, Nebr. Post Office Bldg.
 Norfolk, Nebr. Post Office Bldg.
 North Platte, Nebr. Post Office Bldg.
 Rapid City, S. D. Amer. Legion Hall
 Scott's Bluff, Nebr. Post Office Bldg.
 Sioux Falls, S. D. Co. Court House Annex
 Valentine, Nebr. Cherry County C't House
 Watertown, S. D. Post Office Bldg.
 Yankton, S. D. Post Office Bldg.

ST. LOUIS, MO. U. S. Court & Customs
 House, 12th & Market Sts.
 Cape Girardeau, Mo. Post Office Bldg.
 Jefferson City, Mo. New Post Office Bldg.
 Moberly, Mo. Post Office Bldg.
 Poplar Bluff, Mo. Post Office Bldg.
 Springfield, Mo. New P. O. & Court House

EIGHTH INDUCTION AREA

DALLAS, TEX Post Office & Court House
 St. Paul & Ervay Sts.
 Abilene, Tex. Post Office & Court House
 300 Block, Pine St.
 Amarillo, Tex. Post Office & Court House
 Big Springs, Tex. Court House Bldg.
 Fort Worth, Tex. U. S. Court House
 Longview, Tex. Post Office Bldg.
 Lubbock, Tex. Post Office Bldg.
 802 Broadway
 Paris, Tex. Post Office & Federal Bldg.
 San Angelo, Tex. Federal Bldg.
 Sherman, Tex. P. O. & Court House Bldg.
 Tyler, Tex. Post Office Bldg.
 Ferguson & Bois D'Arc Sts.
 Waco, Tex. Post Office Bldg.
 Wichita Falls, Tex. Post Office Bldg.

HOUSTON, TEX. Post Office Bldg.
 Capitol & San Jacinto Sts.
 Austin, Tex. Old Post Office Bldg.
 Beaumont, Tex. Post Office Bldg.
 Corpus Christi, Tex. Federal Bldg.
 El Paso, Tex. U. S. Court House
 501 San Antonio St.
 Galveston, Tex. New Post Office Bldg.
 Harlingen, Tex. Post Office Bldg.
 Lufkin, Tex. 209 S. First St.
 San Antonio, Tex. New Post Office Bldg.
 621 East Houston St.
 Temple, Tex. Post Office Bldg.
 Victoria, Tex. Post Office Bldg.

LITTLE ROCK, ARK Donaghey Trust
 Bldg., 621 Main St.
 Arkadelphia, Arl Post Office Bldg.
 Eldorado, Ark. Post Office Bldg.

Fayetteville, Ark. Post Office Bldg.
 Fort Smith, Ark. Federal Bldg.
 Helena, Ark. Post Office Bldg.
 Jonesboro, Ark. Post Office Bldg.
 Russellville, Ark. Forestry Bldg.
 Texarkana, Ark. Post Office Bldg.

NEW ORLEANS, LA. U. S. Customs
 House, 423 Canal St.

Alexandria, La. Post Office & Court House
 Baton Rouge, La. Post Office Bldg.
 Lafayette, La. Butcher Bros. Bldg.
 111 East Main St.

Lake Charles, La. Post Office Bldg.
 Monroe, La. P. O. & Court House Bldg.
 Natchitoches, La. 104 Third St.
 Shreveport, La. Slattery Bldg.
 509 Marshall St.

OKLAHOMA CITY, OKLA. Post Office
 Bldg., 3rd & Robinson Sts.

Ada, Okla. Post Office Bldg.
 Altus, Okla. Post Office Bldg.
 Ardmore, Okla. Post Office Bldg.
 Bartlesville, Okla. Post Office Bldg.
 Chickasha, Okla. Post Office Bldg.
 Clinton, Okla. Post Office Bldg.
 Enid, Okla. New Post Office Bldg.
 Lawton, Okla. Post Office Bldg.
 McAlester, Okla. Post Office Bldg.
 Muskogee, Okla. Federal Bldg.
 Oklahoma City, Okla. 240 S. W. Commerce St.
 Ponca City, Okla. Post Office Bldg.
 Poteau, Okla. Post Office Bldg.
 Seminole, Okla. Post Office Bldg.
 Stillwater, Okla. Municipal Bldg.
 Tulsa, Okla. Post Office Bldg.
 Third St. & Boulder St.

Vinita, Okla. Post Office Bldg.

SANTA FE, N. M. New City Hall Bldg.
 Washington Ave. & Marcy St.

Albuquerque, N. M. Federal Bldg.
 Carlsbad, N. M. Elks Bldg.
 Clovis, N. M. Post Office Bldg.
 Gallup, N. M. Post Office Bldg.
 Hobbs, N. M. City Hall
 Las Cruces, N. M. 115 Griggs Ave.
 Las Vegas, N. M. Post Office Bldg.
 Raton, N. M. Hotel Yucca
 Roswell, N. M. Post Office Bldg.
 Silver City, N. M. Grant Co. Crt. House

NINTH INDUCTION AREA

BOISE, IDAHO Capitol Securities Bldg.
 805 Idaho St.

Idaho Falls, Idaho Post Office Bldg.
 Pocatello, Idaho Post Office Bldg.
 Arthur & Lewis Sts.

Twin Falls, Idaho Fidelity Nat. Bank Bldg.

HELENA, MONT. Gold Block Bldg.
 50 North Main St.

Billings, Mont. Federal Bldg.
 Butte, Mont. Federal Bldg.
 North Main & West Copper Sts.

Glasgow, Mont. Post Office Bldg.
 Glendive, Mont. Post Office Bldg.
 Great Falls, Mont. Federal Bldg.
 Havre, Mont. Federal Bldg.
 Miles City, Mont. 705 Main St.
 Missoula, Mont. Forestry An., Fed. Bldg.
 Plentywood, Mont. Sheridan Co. Crt House

LOS ANGELES, CALIF. P. O. & Court
 House, Main & Temple Sts.

Alhambra, Calif. 24 North Stoneman Ave.
 Bakersfield, Calif. Post Office Bldg.
 Beverly Hills, Calif. 9431 S'ta Monica Blvd.
 Burbank, Calif. Post Office Bldg.
 Compton, Calif. Band Stand, City Hall Park
 Culver City, Calif. 9538 Washington Blvd.
 El Centro, Calif. Post Office Bldg.
 El Monte, Calif. 205 East Valley Blvd.
 Glendale, Calif. City Hall
 Hollywood, Calif. Amer. Legion Club House
 Post 43

Huntington Park, Calif. Post Office Bldg.
 Inglewood, Calif. Grevillea Park
 Long Beach, Calif. Post Office Bldg.
 Pasadena, Calif. Y. M. C. A.
 Pomona, Calif. Post Office & Federal Bldg.
 Riverside, Calif. Post Office Bldg.
 San Bernardino, Calif. Federal Bldg.
 San Diego, Calif. Post Office Bldg.
 8th & "E" Sts.

San Fernando, Calif. Post Office Bldg.
 San Pedro, Calif. P. O. & Customs House
 Santa Ana, Calif. Post Office Bldg.
 Santa Barbara, Calif. Post Office Bldg.
 Santa Maria, Calif. 125 West Church St.
 Santa Monica, Calif. Post Office Bldg.
 Ventura, Calif. 11 South Ash St.
 Whittier, Calif. 535 South Greenleaf

PHOENIX, ARIZ. Heard Bldg.
 114-120 No. Central Ave.

Douglas, Ariz. Post Office Bldg.
 Flagstaff, Ariz. County Court House
 Miami, Ariz. Town Hall Bldg.
 Prescott, Ariz. Post Office Bldg.
 Safford, Ariz. Post Office Bldg.
 Tucson, Ariz. Post Office Bldg.
 Yuma, Ariz. City Hall

PORTLAND, ORE. Elks Temple
 620 S. W. Eleventh St.

Astoria, Ore. Post Office Bldg.
 Bend, Ore. Post Office Bldg.
 Corvallis, Ore. Post Office Bldg.
 Eugene, Ore. Post Office Bldg.
 Grants Pass, Ore. Federal Bldg.
 Klamath Falls, Ore. Federal Bldg.
 McMinnville, Ore. Chamber of Com. Bldg.
 Marshfield, Ore. Federal & Post Office Bldg.
 Medford, Ore. U. S. Court House & P. O.
 Salem, Ore. Post Office Bldg.
 The Dalles, Ore. Civic Auditorium

SALT LAKE CITY, UTAH P. O. Bldg.
 350-60 South Main St.

Cedar City, Utah Post Office Bldg.
 Elko, Nev. Federal Bldg.
 Las Vegas, Nev. Post Office Bldg.
 Ogden, Utah Post Office Bldg.
 Provo, Utah Post Office Bldg.
 Reno, Nev. J. R. Bradley Bldg.

SAN FRANCISCO, CALIF. Federal Office
 Bldg., Civic Center

Eureka, Calif. Post Office Bldg.
 Fresno, Calif. New Court House &
 Post Office Bldg., Tulare & North Sts.

Oakland, Calif. Post Office Bldg.
 Redding, Calif. City Hall
 Sacramento, Calif. New Federal Bldg.
 Eight & Eye Sts.

Salinas, Calif. National Guard Armory
 San Jose, Calif. Post Office Bldg.
 Santa Rosa, Calif. Sonoma Co. Court House
 Stockton, Calif. Post Office Bldg.

SEATTLE, WASH. Mann Bldg.
 1411 1/2 Third Ave.

Aberdeen, Wash. Post Office Bldg.
 Bellingham, Wash. Post Office Bldg.
 Bremerton, Wash. 249 Fourth St.
 Chehalis, Wash. New Post Office Bldg.
 Everett, Wash. 2732 Colby Ave.
 Kelso, Wash. Cowlitz County Court House
 Olympia, Wash. Old Capitol Bldg.
 Port Angeles, Wash. Post Office Bldg.
 Tacoma, Wash. City Hall Annex
 Vancouver, Wash. 600 1/2 Main St.

SPOKANE, WASH. Welch Bldg.
 610 Main Ave.

Baker, Ore. Post Office Bldg.
 Coeur d'Alene, Idaho Post Office Bldg.
 La Grande, Ore. Post Office Bldg.
 Lewiston, Idaho Post Office Bldg.
 Pendleton, Ore. Post Office Bldg.
 Sandpoint, Idaho Post Office Bldg.
 Walla Walla, Wash. Post Office Bldg.
 Wenatchee, Wash. Post Office Annex
 Yakima, Wash. Post Office Bldg.

Offices of Naval Officer Procurement

(MAIN STATIONS IN CAPITAL LETTERS)

ATLANTA, GEORGIA.....Healey Building
Columbia, South Carolina.....University of South Carolina
Jacksonville, Florida.....915 Lynch Building
Knoxville, Tennessee.....Room 326, New Post Office Building
Miami, Florida.....Room 905, Langford Bldg.,
121 S. E. First Street
Raleigh, North Carolina.....North Carolina State College

BOSTON, MASSACHUSETTS.....150 Causeway Street

CHICAGO, ILLINOIS.....Board of Trade Bldg., 141 West Jackson
Cincinnati, Ohio.....617 Vine Street
Cleveland, Ohio.....6th Floor, Marshall Building
Des Moines, Iowa.....Room 115, Old Post Office Building
Detroit, Michigan.....9th Fl., Book Bldg., 1249 Washington Blvd.
Kansas City, Missouri.....202 Finance Bldg., 1009 Baltimore Ave.
Milwaukee, Wisconsin.....110 E. Wisconsin Ave.
Minneapolis, Minnesota.....4th Fl., Roanoke Bldg. 109 South 7th St.
St. Louis, Missouri.....6th Fl., Missouri Pacific Bldg., 210 N. 13th St.

LOS ANGELES, CALIFORNIA.....Title Guarantee & Trust Co. Bldg.,
411 South 5th St.
San Diego, California.....615 Broadway Street

NEW ORLEANS, LOUISIANA.....Louisiana Bldg. 217-227 Camp Street
Birmingham, Alabama.....601-609 Jackson Building
Dallas, Texas.....1530 Allen Building
Houston, Texas.....824 Niels Esperson Building
Memphis, Tennessee.....1212 Sterick Building
Oklahoma City, Oklahoma.....805 APCO Tower

NEW YORK, N. Y.....33 Pine Street
Rochester, N. Y.....Genesee Valley Trust Bldg.

PHILADELPHIA, PA.....17th Fl., Widener Bldg., Juniper & Chestnut Sts.
Pittsburgh, Pa.....Keystone Hotel Bldg., 3rd Ave. & Wood St.

RICHMOND, VA.....Fifth and Cary Streets
Charleston, West Virginia.....Kanawha Hotel Building

SAN FRANCISCO, CALIFORNIA.....703 Market Street

SEATTLE, WASHINGTON.....117 Marion Street
Portland, Oregon.....1233 American Bank Building

WASHINGTON, D. C.....1320 G Street, N. W.
Baltimore, Maryland.....Richmond Market Armory, North Howard St.



IT'S A WOMAN'S WAR TOO

*JOIN THE
NAVY
WAVE'S*

YOUR COUNTRY NEEDS YOU NOW